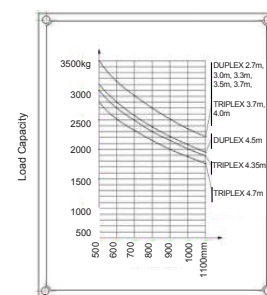
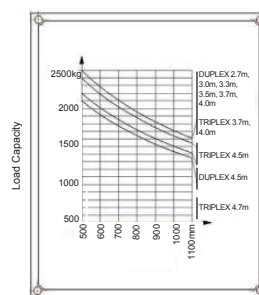
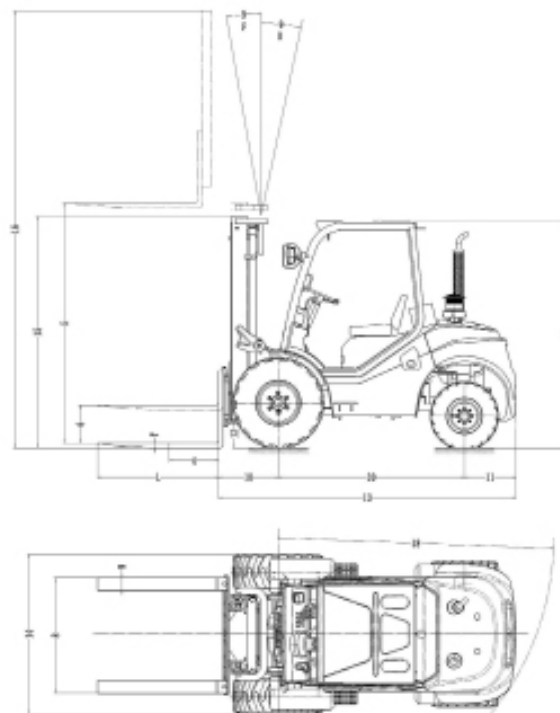




2.5T - 3.5T ROUGH TERRAIN DIESEL FORKLIFTS

GENERAL SPECIFICATIONS					
Model		FDT25T-CW3		FDT35T-CW3	
Power Type		Diesel			
Rated Capacity (kg)		2500		3500	
Load Centre (mm)		500			
CHARACTERISTICS AND DIMENSIONS					
Lift Height (mm)		3000			
Free Lift Height (mm)		160		165	
Fork Size L x W x T (mm)		1100 x 122 x 40		1220 x 122 x 40	
Fork Regulating Range Min./Max.		250/1160			
Mast Tilt Angle F/R (Deg)		10°/12°			
Front Overhang (mm)		586		601	
Rear Overhang (mm)		520			
Min. Ground Clearance (mm)		270			
Length to Face of Fork (without Fork) (mm)		2946		2956	
Overall Width (mm)		1557.5		1600.5	
Mast Lowered Height (mm)		2265		2330	
Mast Extended Height (with Backrest) (mm)		4175		4305	
Overhead Guard Height (mm)		2256.5		2276	
Turning Radius (outside) (mm)		2783			
Min. Right Angle Stacking Aisle Width (Add Load Length and Clearance) (mm)		4795		4805	
PERFORMANCE					
Travel (Unladen/Laden) (km/h)		20/18		22/22	
Lifting (Unladen/Laden) (mm/s)		600/570		480/450	
Lowering (Unladen/Laden) (mm/s)		420/445		400/500	
Max. Drawbar Pull (Laden/Unladen) (KN)		17000			
Max. Gradeability (Loaden) (%)		20		16	
CHASSIS					
Tyre (Front x 2) (mm)		12-16.5-14PR		14-17.5-14PR	
Tyre (Rear x 2) (mm)		27x10-12-12PR		27x10-12-12PR	
Front Tread (mm)		1205.5			
Rear Tread (mm)		1205			
Front Tyre Pressure (bar)		680		680	
Rear Tyre Pressure (bar)		650		650	
Seat to Ceiling inside Height (mm)		1010			
Wheelbase (mm)		1880			
WEIGHT					
Self Weight (kg)		4465		5180	
Laden Weight Distribution (kg)	Front Axle	5990		7725	
	Rear Axle	975		955	
Unladen Weight Distribution (kg)	Front Axle	1785		2070	
	Rear Axle	2680		3110	
POWER AND TRANSMISSION					
Battery Voltage/Capacity (V/Ah)		12/90		12/90	
Engine	Model	4TNE98 - BQFLC			
	Manufacturer	YANMAR			
	Rated Output/rpm (kW)	42.1/2300			
	Rated Torque/rpm (N·m)	186 - 206/1700			
	No. of Cylinders	4			
	Bore x Stroke (mm)	98 x 110			
	Displacement (L)	3.318			
Transmission	Fuel Tank Capacity (L)	55			
	Type	YQXD30 - XH		YQXD40MKS - XH	
	Stage (F/R)	1/1			
Operating Pressure (For Attachments) (Mpa)		20			
Min. Right Angle Stacking Aisle Width (mm)		2615			

LOAD CHART



MAST OPTIONS	
Duplex	FFL Triplex
3.3m	3.7m
3.5m	4.0m
3.7m	4.7m
4.0m	
4.5m	



STANDARD FEATURES

TWO-WHEEL DRIVE SYSTEM

Forklifts Australia's Rough Terrain Forklift is a tough, compact forklift with a two-wheel drive system. The forklift is based on a conventional forklift, but built for rough terrain performance.

ENGINE

Forklifts Australia's 2.5T and 3.5T Rough Terrain Forklifts adopt the Yanmar 4TNE98(EU III) diesel engine. It is world renowned for superior performance, economy and longevity. Timed glow plug cold start in cold climates allows faster warm up and fuel savings. The Yanmar engine conforms to all world environmental EPA standards.



TRANSMISSION WITH DIFFERENTIAL LOCK

The power shift transmission with torque converter features two inching pedals, brake control and full reversal allowing faster cycle times. The differential is specifically designed for rough terrain and features automatic differential lock providing ultimate traction during inclement weather conditions and rough operating surfaces.



STEER AXLE

The oscillating steel axle allows either wheel to step over obstacles keeping the machine and load level. Floatation drive and steer tyres provide excellent traction and stability. The steering angle is from 54° to 78° with very small turning radius.

APPEARANCE: MODERN DESIGN

Forklifts Australia's Rough Terrain Forklift design has adopted a clear and concise appearance with a modern design.



FLOATING SYSTEM

Forklifts Australia's Rough Terrain Forklift adopts a floating R.O.P system. Engineers have adapted the latest ergonomics for operator convenience. A superior full floating operator cabin is installed with rubber damping instead of the traditional rigid design. This greatly reduces machine vibration and offers a smoother ride over rough terrain and reduces operator fatigue. Travel and hydraulic controls are positioned forward for the most ergonomic natural operation. The fully adjustable tilt steering wheel and full suspension seat with seat belt accommodate various sized operators.

MAST: WIDE VIEW AND DURABLE

The 2.5T Rough Terrain Forklift's mast width is 1557.5mm. The 3.5T Rough Terrain Forklift's mast width is 1600.5mm. Maximum mast tilt angle F/R reaches to 10°/12°. The wide view mast provides excellent through-the-mast visibility improving the work efficiency and allowing safe operation of the forklift. Beam rails and heavy tie bar construction reduce twisting while handling long, lateral loads on rough surface applications. Sealed bearing load rollers are externally adjustable to compensate for long term wear. Side thrust rollers on the top and bottom of all rails and carriage side thrust rollers reduce mast roller maintenance and replacements. A clear view to the forks and surrounding area is optimised through the wide view mast. Excellent rearward visibility is enhanced with the sloping rear counterweight and fenders. The dash and LED monitor panel is mounted low and in the line of sight for operator's convenience.