

HOW TO USE Quick Manual

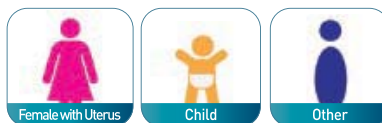


Scan button

1. Turn on the System

Press the power button(⏻) until the device turns on.

2. Select Patient Type



3. Apply Ultrasound Gel

Apply gel on the top of the probe before scanning.

* **Patient Position:** Have the patient lie in the supine position

HOW TO USE Quick Manual

4. Aim Toward the Bladder

Put the gel-applied probe on the patient's abdomen and aim toward the bladder.

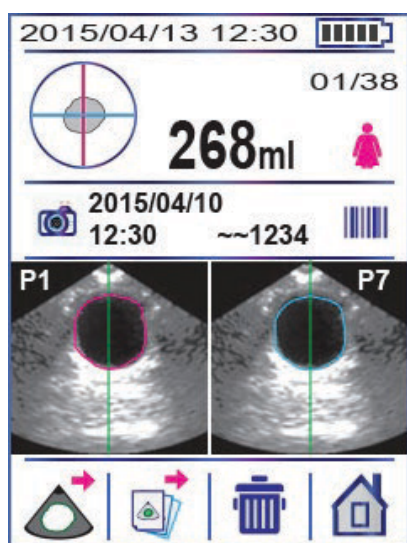
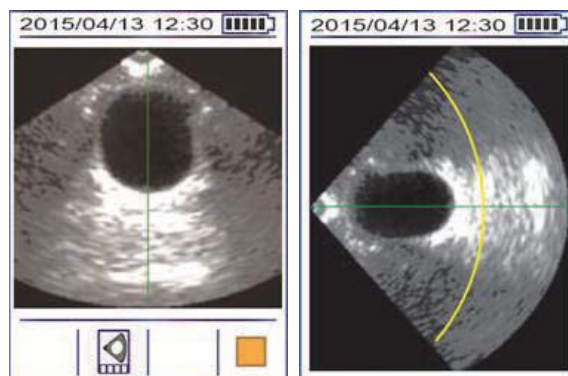
Important: Please make sure that the Scan button of the probe should be facing the foot side of the patient.



5. Locate the Bladder by Pre-scan Function

Press the Scan button to start Pre-Scan, and then the Pre-Scan function shows the live bladder image.

Important: Please make sure that the Pre-Scan function is 'on' in the device set-up.



6. Scan Result Screen

When the bladder image looks the biggest on the screen, press the Scan button.

Important: When the 'Pre-Scan' function is 'off' in the device set-up, a scanning will be done without Pre-Scan stage.

7. Save and / or Print