



Controller (PCB) Details

- **Input Supply:** 110V AC/220V AC, 50/60 Hz
- **Input Fuse:** 1 Amp, 110/220V AC
- **On Time:** 20 to 200 milliseconds
- **Off Time:** 2 to 60 seconds
- **Sequential Steps:** 1 to 5 (adjustable)
- **Operating Temp:** 0 to 55°C
- **Current Rating per Sequence:**
- **Max Inrush Current:** 10 Amps
- **Max Continuous Current:** 2 Amps (2 solenoid valves per channel)
- 5-Way/10-Way Microcontroller-Based Sequential Timer Card



SQDP-612

Sequence Controller with Differential Pressure Switch.

KEY FEATURES

- **Power:** Options for 230V / 110V, 50 / 60Hz.
- **Pulse Frequency:** Adjustable 2–120 seconds (custom timings available).
- **Pulse Duration:** Adjustable 20–200 milliseconds (custom timings available).
- **Output Glands:** PG 9 for solenoids.
- **Input Glands:** PG 13.5 for power input.
- **LED Indicators:** Red Clock LED for power status, Power On LED, Sequence Function Indicator LEDs.
- **Feedback Relay:** Included for enhanced control.
- **Manual Pulsing:** For testing and troubleshooting.
- **Operating Modes:** Continuous Cycle



APS Technology Australia Pty Ltd,
Epping NSW, Australia

info@aps-technology.com.au

www.aps-technology.com.au



Enclosure

- **Type:** IP-66 hinged Water proof box
- **Size:** : 400(W) x 300(H) x 170(D) mm
- **Mounting Dimensions:**400(W) x 300(H) x 170(D) mm with mounting ears.



KEY FEATURES

On-Demand Mode (Air Save Mode)

- **Configuration:** Uses high limit and low limit inputs.

Control Systems:

- **Simple On-Off System:** Single pressure switch connected to the high limit input.
- **Differential Pressure Sensor:** High and low limit switch set via analog or digital gauge with relay control.

Operation:

- **On-Demand Pulsing:** Starts when differential pressure (DP) is high and continues until it reaches the low set point.
- **Crash Mode:** Rapid Pulsing for high setpoint.
- **Programming:** On time and off time can be programmed to define the cleaning cycle.
- **Number of Channels Selection:** Select the last channel used by placing the jumper on the corresponding pins.

APPLICATIONS

AgriTech

- **Grain Handling:** Manages movement in silos, conveyors, and processing equipment.
- **Feed Processing:** Controls mixing, grinding, and pelletizing for consistent quality.

Pharmaceutical Industry

- **Conveyor Systems:** Manages conveyor belt operations and material transfer.
- **Material Handling:** Controls movement in storage bins, hoppers, and loading/unloading equipment.

Food & Beverage Industry

- **Packaging Systems:** Coordinates containers, filling, sealing, and labeling.
- **Production Line Control:** Synchronizes conveyors, mixers, fillers, and packaging equipment.

Mining Tech

- **Batch Processing:** Controls sequential steps in mixing, blending, heating, and cooling.
- **Automated Packaging:** Manages movement, filling, capping, labeling, and serializing in packaging systems.

Controller (PCB)

- **Input Supply:** 110V AC/220V AC, 50/60 Hz
- **Input Fuse:** 1 Amp, 110/220V AC
- **On Time:** 20 to 200 milliseconds
- **Off Time:** 2 to 60 seconds
- **Sequential Steps:** 1 to 5 (adjustable)
- **Operating Temp:** 0 to 55°C
- **Current Rating per Sequence:**
 - **Max Inrush Current:** 10 Amps
 - **Max Continuous Current:** 2 Amps (2 solenoid valves per channel)
- 5-Way/10-Way Microcontroller-Based Sequential Timer Card

KEY FEATURES

- **Power:** Options for 230V / 110V, 50 / 60Hz.
- **Pulse Frequency:** Adjustable 2-120 seconds (custom timings available).
- **Pulse Duration:** Adjustable 20-200 milliseconds (custom timings available).
- **Output Glands:** PG 9 for solenoids.
- **Input Glands:** PG 13.5 for power input.
- **LED Indicators:** Red Clock LED for power status, Power On LED, Sequence Function Indicator LEDs.
- **Feedback Relay:** Included for enhanced control.
- **Manual Pulsing:** For testing and troubleshooting.
- **Operating Modes:** Continuous Cycle



APS Technology Australia Pty Ltd,
Epping NSW, Australia

info@aps-technology.com.au

www.aps-technology.com.au



KEY FEATURES

Enclosure

- **Type:** IP-66 hinged Water proof box
- **Size:** : 400(W) x 300(H) x 170(D) mm
- **Mounting Dimensions:** 400(W) x 300(H) x 170(D) mm with mounting ears.



On-Demand Mode (Air Save Mode)

- **Configuration:** Uses high limit and low limit inputs.

Control Systems:

- **Simple On-Off System:** Single pressure switch connected to the high limit input.
- **Differential Pressure Sensor:** High and low limit switch set via analog or digital gauge with relay control.

Operation:

- **On-Demand Pulsing:** Starts when differential pressure (DP) is high and continues until it reaches the low set point.
- **Crash Mode:** Rapid Pulsing for high setpoint.
- **Programming:** On time and off time can be programmed to define the cleaning cycle.
- **Number of Channels Selection:** Select the last channel used by placing the jumper on the corresponding pins.

APPLICATIONS

AgriTech

- **Grain Handling:** Manages movement in silos, conveyors, and processing equipment.
- **Feed Processing:** Controls mixing, grinding, and pelletizing for consistent quality.

Pharmaceutical Industry

- **Conveyor Systems:** Manages conveyor belt operations and material transfer.
- **Material Handling:** Controls movement in storage bins, hoppers, and loading/unloading equipment.

Food & Beverage Industry

- **Packaging Systems:** Coordinates containers, filling, sealing, and labeling.
- **Production Line Control:** Synchronizes conveyors, mixers, fillers, and packaging equipment.

Mining Tech

- **Batch Processing:** Controls sequential steps in mixing, blending, heating, and cooling.
- **Automated Packaging:** Manages movement, filling, capping, labeling, and serializing in packaging systems.

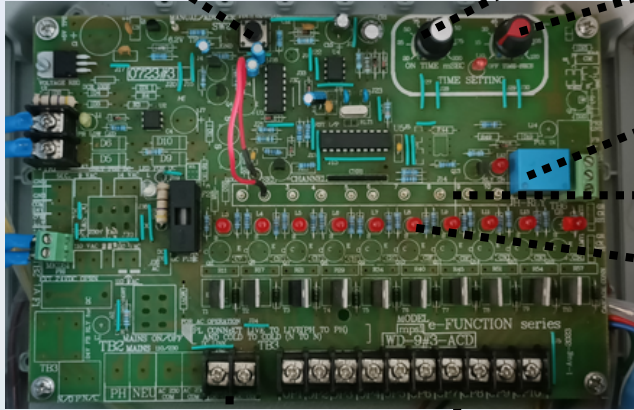
SYSTEM DETAILS

PCB Controller Card

Manual Pulsing

ON Time

OFF Time



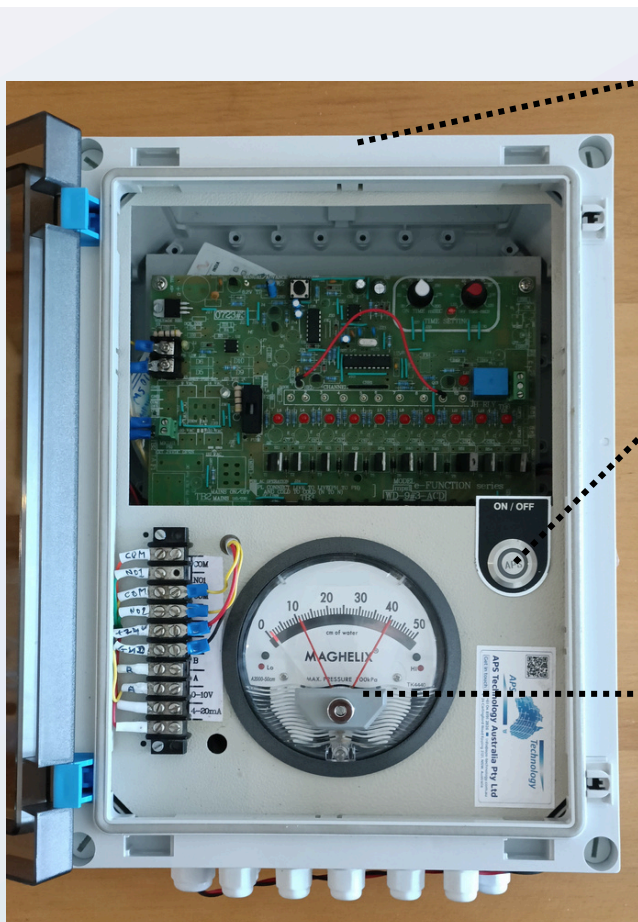
Healthy Relay

Selector Link

LED Indicator

Pulse Jet Valve Negative(-)

Pulse Jet Valve Positive (+)



IP-66 Waterproof box with 24V, 2A SMPS inside

ON/OFF SWITCH

Analog Differential Pressure Gauge Transmitter

Display: knob sets pointers limits position

Output: 0-10V & 4-20mA (3 wires), RS485/Modbus

Medium Temp: -7-60°C

Work Environment: -20~70°C

Compensated Temp: 0-50°C

Work pressure: 1, 2, 5 or 10Kpa for different ranges

Relay output: 2×SPST.

Response time: <5s

Power: 16-35V DC

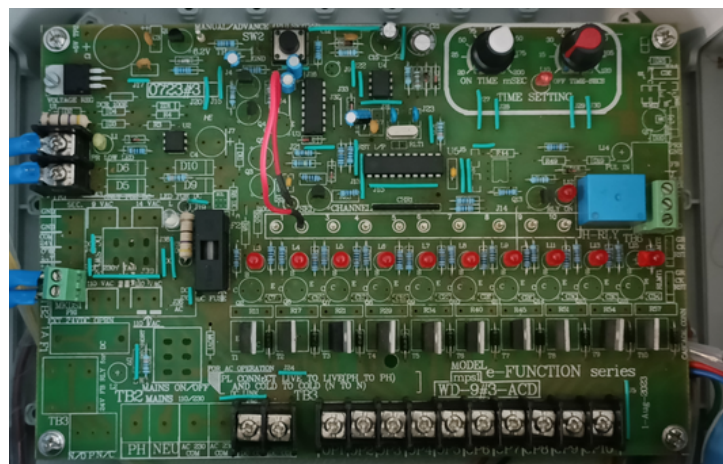
PG 13 grands x 10

Controller (PCB)

- **Input Supply:** 110V AC/220V AC, 50/60 Hz
- **Input Fuse:** 1 Amp, 110/220V AC
- **On Time:** 20 to 200 milliseconds
- **Off Time:** 2 to 60 seconds
- **Sequential Steps:** 1 to 5 (adjustable)
- **Operating Temp:** 0 to 55°C
- **Current Rating per Sequence:**
- **Max Inrush Current:** 10 Amps
- **Max Continuous Current:** 2 Amps (2 solenoid valves per channel)
- 5-Way/10-Way Microcontroller-Based Sequential Timer Card

KEY FEATURES

- **Power:** Options for 230V / 110V, 50 / 60Hz.
- **Pulse Frequency:** Adjustable 2-120 seconds (custom timings available).
- **Pulse Duration:** Adjustable 20-200 milliseconds (custom timings available).
- **Output Glands:** PG 9 for solenoids.
- **Input Glands:** PG 13.5 for power input.
- **LED Indicators:** Red Clock LED for power status, Power On LED, Sequence Function Indicator LEDs.
- **Feedback Relay:** Included for enhanced control.
- **Manual Pulsing:** For testing and troubleshooting.
- **Operating Modes:** Continuous Cycle



APS Technology Australia Pty Ltd,
Epping NSW, Australia

info@aps-technology.com.au

www.aps-technology.com.au



Enclosure

- **Type:** IP-66 hinged Water proof box
- **Size:** : 400(W) x 300(H) x 170(D) mm
- **Mounting Dimensions:**400(W) x 300(H) x 170(D) mm with mounting ears.



KEY FEATURES

On-Demand Mode (Air Save Mode)

- **Configuration:** Uses high limit and low limit inputs.

Control Systems:

- **Simple On-Off System:** Single pressure switch connected to the high limit input.
- **Differential Pressure Sensor:** High and low limit switch set via analog or digital gauge with relay control.

Operation:

- **On-Demand Pulsing:** Starts when differential pressure (DP) is high and continues until it reaches the low set point.
- **Crash Mode:** Rapid Pulsing for high setpoint.
- **Programming:** On time and off time can be programmed to define the cleaning cycle.
- **Number of Channels Selection:** Select the last channel used by placing the jumper on the corresponding pins.

APPLICATIONS

AgriTech

- **Grain Handling:** Manages movement in silos, conveyors, and processing equipment.
- **Feed Processing:** Controls mixing, grinding, and pelletizing for consistent quality.

Pharmaceutical Industry

- **Conveyor Systems:** Manages conveyor belt operations and material transfer.
- **Material Handling:** Controls movement in storage bins, hoppers, and loading/unloading equipment.

Food & Beverage Industry

- **Packaging Systems:** Coordinates containers, filling, sealing, and labeling.
- **Production Line Control:** Synchronizes conveyors, mixers, fillers, and packaging equipment.

Mining Tech

- **Batch Processing:** Controls sequential steps in mixing, blending, heating, and cooling.
- **Automated Packaging:** Manages movement, filling, capping, labeling, and serializing in packaging systems.

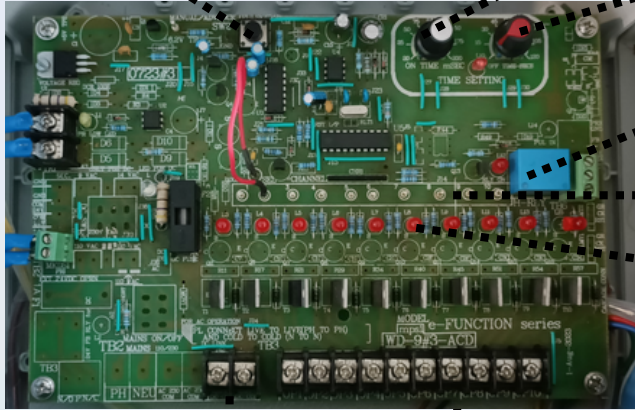
SYSTEM DETAILS

PCB Controller Card

Manual Pulsing

ON Time

OFF Time



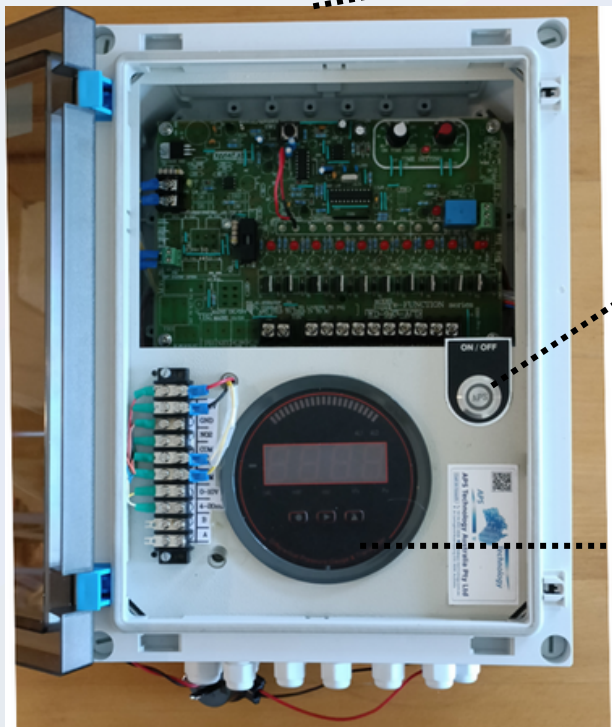
Healthy Relay

Selector Link

LED Indicator

Pulse Jet Valve Negative(-)

Pulse Jet Valve Positive (+)



IP-66 Waterproof box with
24V, 2A SMPS inside

ON/OFF SWITCH

Digital Differential Pressure Gauge Transmitter

Display: 4 bits 0.8" red LED

Output: 0-10V & 4-20mA (3 wires),
RS485/Modbus

Medium Temp: 0-60°C

Work Environment: -20~70°C

Compensated Temp: 0-50°C

Work pressure: 1, 2, 5 or 10Kpa for
different ranges

Relay output: 2×SPST.

Response time: 0.5-30s

Power: 16-35V DC

PG 13 grands x 10