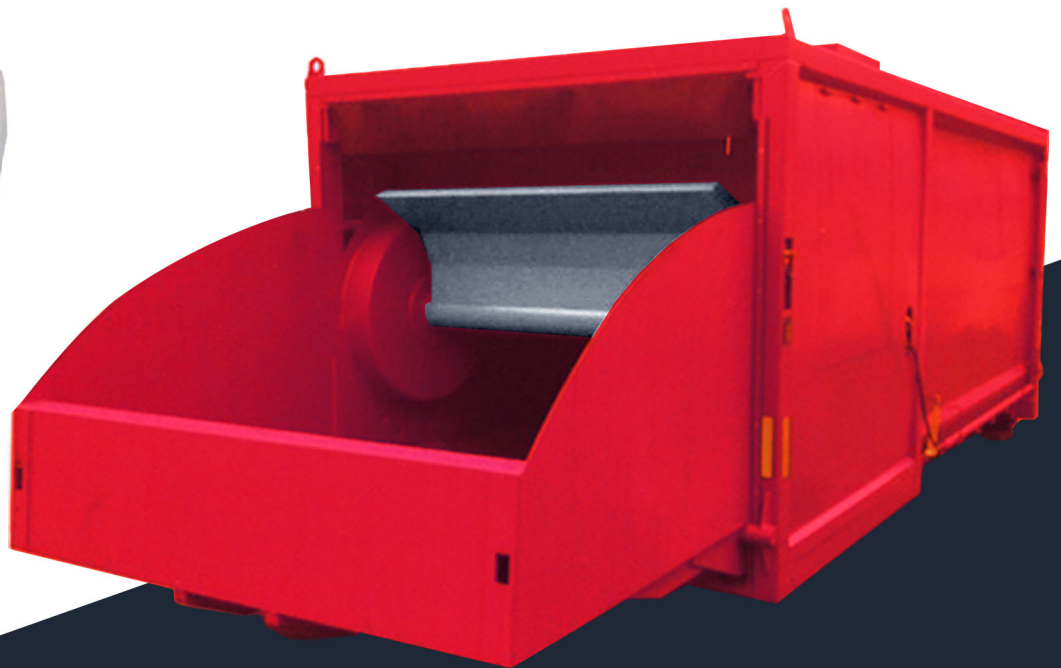




**Shark
Compactor**
Mobile Transfer Station

The patented Shark Compactor is ideal for compacting and transporting large waste products that are too bulky to be handled by traditional compactors

- Insulation Bats → 7-9 tonnes
- Wood Frame Furniture → 6-7 tonnes
- Hard Plastic Containers → 5-6 tonnes
- Large Difficult Cardboard → 5-6 tonnes



HIGHLIGHTS

- Transportable compactor
- Heavy duty compaction blade
- 30-60 seconds cycle time
- 50 tonne compaction force
- Up to 30m³ bin
- 5m³ loading hopper
- Low feeding height for ease of use
- Easy maintenance
- Hopper closes when not in use
- 30% less energy consumption

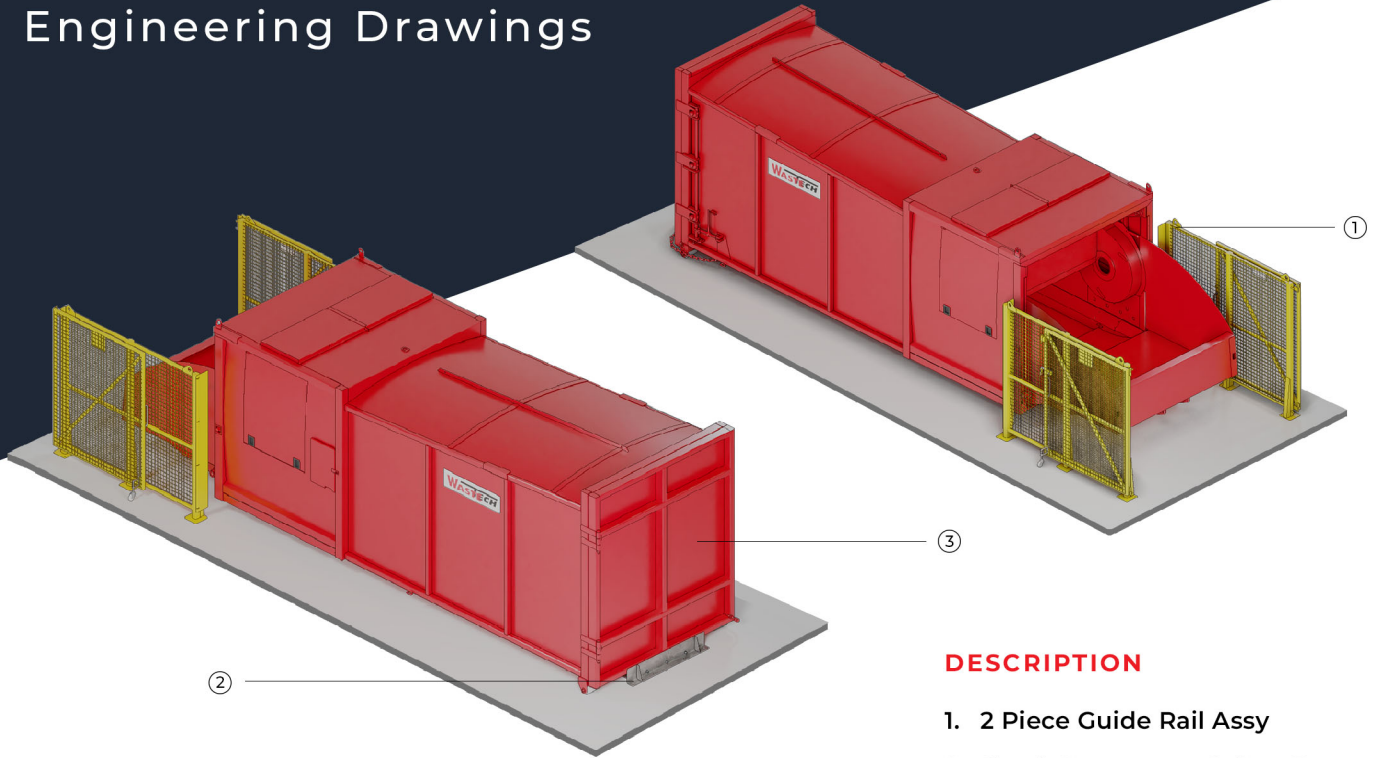


TYPICAL APPLICATION

Truck 8x4 Gross Vehicle Mass	=	27,500kg
Truck 8x4 + Hooklift Tare Weight	=	12,980kg
Shark Compactor Tare Weight	=	5,800kg
Payload Inside Compactor	=	8,720kg

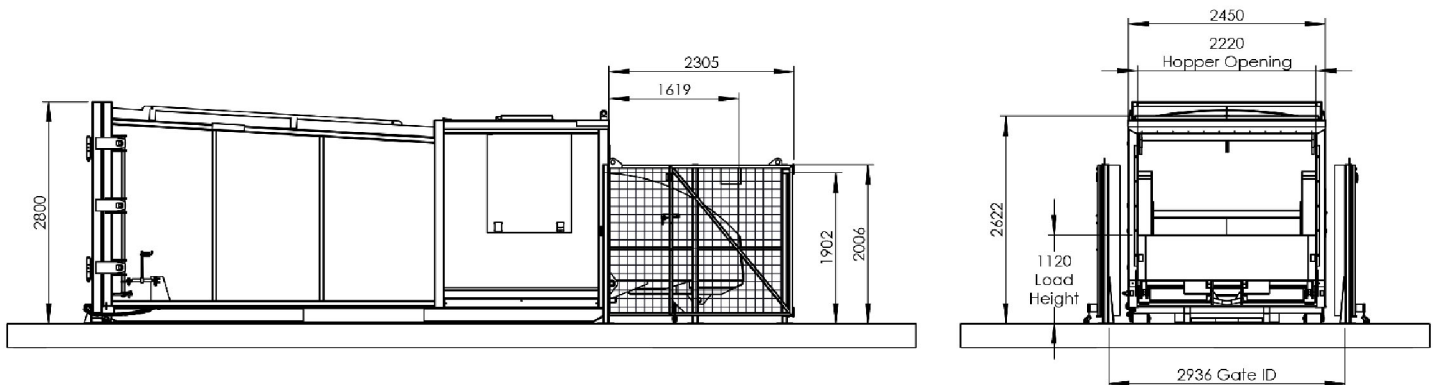
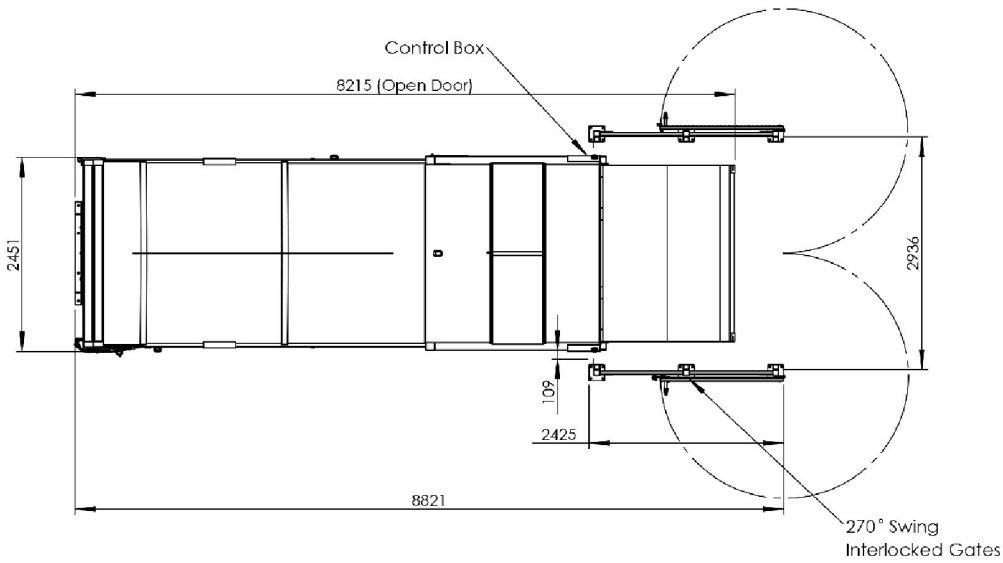
SHARK COMPACTOR

Engineering Drawings



DESCRIPTION

1. 2 Piece Guide Rail Assy
2. Shark Compactor Safety Fence
3. Shark Compactor Assy



CONTACT US

Head Office

33 Wedgewood Drive,
Hallam VIC 3803
info@wastech.com.au

Service Centre

29 Technology Circuit,
Hallam VIC 3803
service@wastech.com.au

1800 465 465
www.wastech.com.au

