

H845E/LH845E HARVESTER

THE H845E

The H845E is an efficient, high performance harvester with limited tail-swing and outstanding service access.



THE LH845E

Equipped with Tigercat's leveling system, The LH845E is an efficient, high performance leveling harvester well suited to steep slope applications.



THE QUICK, EFFICIENT, HIGH PERFORMANCE H845E HARVESTER.

The E-series H845 harvesters are quick, powerful, versatile machines well suited to a variety of harvesting and processing applications. The H845E series enhancements include a redesigned cab with improved comfort, convenience and ergonomics.

POWER AND ACCESS

EFFICIENT HIGH CAPACITY COOLING SYSTEM

Automatic variable fan speed for improved fuel efficiency and automatic reversing cycle to clean the heat exchangers.

CLAMSHELL STYLE RETRACTING ROOF ENCLOSURE AND NEAT, COMPARTMENTALIZED COMPONENT ARRANGEMENT.

Large swing-out doors for clear access to both sides of the engine and all daily service points. Hydraulic components are compartmentalized, separating the engine from the hydraulic pumps and valves.

Tigercat
by **FPT**
FORESTRY TECHNOLOGIES

TIGERCAT FPT ENGINE TECHNOLOGY

Tigercat FPT Tier 2 and Tier 4f engines offer quick load response, low operating costs and high power density, combined with excellent fuel economy.

The second-generation common rail fuel injection system provides top performance in the most demanding applications.

Tigercat FPT Tier 4f emission technology is simple and reliable. The Tier 4f configuration meets emission standards without complex add-on components. The key is the patented selective catalyst reduction (SCR) after-treatment system.

Tigercat FPT engines offer improved reliability and lower long-term maintenance costs – the clear power choice for forestry and off-road industrial applications.

TIGERCATPOWER.
TIGERCATSUPPORT.





REDESIGNED OPERATOR'S STATION

- Clear view of the tracks with full-length front window
- Narrow side posts for improved visibility to each side
- Optimally positioned controls and large touch screen display
- Reduced noise levels
- Auxiliary input port, Bluetooth® audio, hands free calling and Sirius ready (North America only)
- Redesigned hinge geometry for easy-close front door
- skyVIEW and rearVIEW camera equipped



EXTREME DUTY LEVELING SYSTEM

Field proven, millions of hours of operation. Long frames and wide stance for excellent stability. Thick steel plate, massive cylinders and tapered roller bearings. Unique patented geometry improves machine stability on sloping terrain.

EFFICIENCY AND VERSATILITY

Optimized harvester head hydraulics and robust, high quality components maximize performance and efficiency. Tigercat harvesting heads are equipped with large diameter hoses and large capacity valves to match the greater hydraulic flow and power of Tigercat harvester carriers. The H845E can be equipped with the Tigercat 570, 575 or 568 harvesting head to suit your tree size and application.



570 HARVESTING HEAD



575 HARVESTING HEAD



568 HARVESTING HEAD

HIGH SPEED, HIGH PERFORMANCE, HIGH EFFICIENCY

Tigercat's patented ER[®] technology allows the machine operator to extend and retract the boom on a horizontal plane smoothly and quickly using a single joystick. But the benefit goes beyond reducing operator fatigue.

Key to ER technology is reduced energy consumption. The ER system transfers energy back and forth between the main and the stick boom functions, reducing the total energy required to move the boom system. This reduces demands for power, pump flow and system cooling. The result is increased productivity and reduced fuel consumption per unit of production.

ER
technology

ENERGY RECOVERY
EASY REACH

The telescopic ER boom option reduces machine travel. It is an asset in sensitive sites and selective felling applications.



H845E

LH845E

DIMENSIONS WITH STANDARD TRACK SHOE

WIDTH	3 380 mm (133 in)	3 430 mm (135 in)
*With narrow undercarriage	3 000 mm (118 in)	3 000 mm (118 in)
LENGTH less boom	4 900 mm (193 in)	4 900 mm (193 in)
HEIGHT	3 360 mm (132 in)	3 730 mm (147 in)
GROUND CLEARANCE	710 mm (28 in)	685 mm (27 in)
WEIGHT less attachment	26 760 kg (59,000 lb)	34 925 kg (77,000 lb)
*With narrow undercarriage	26 535 kg (58,500 lb)	34 925 kg (77,000 lb)
TAIL SWING radius	2 665 mm (105 in)	2 665 mm (105 in)

POWER

ENGINE Tier 4f	Tigercat FPT N67 Tier 4f	Tigercat FPT N67 Tier 4f
▶ RATED	212 kW (284 hp) @ 2,200 rpm	212 kW (284 hp) @ 2,200 rpm
▶ PEAK	212 kW (284 hp) @ 2,200 rpm	212 kW (284 hp) @ 2,200 rpm
ENGINE Tier 2	Tigercat FPT N67 Tier 2	Tigercat FPT N67 Tier 2
▶ RATED	205 kW (275 hp) @ 2,100 rpm	205 kW (275 hp) @ 2,100 rpm
▶ PEAK	212 kW (284 hp) @ 2,000 rpm	212 kW (284 hp) @ 2,000 rpm
AIR FILTRATION	Precleaner and 2-stage engine air cleaner	Precleaner and 2-stage engine air cleaner
COOLING	Aluminum side by side radiator, oil cooler and charge air cooler Removable intake debris screen	Aluminum side by side radiator, oil cooler and charge air cooler Removable intake debris screen
FAN	Hydraulically driven, automatic variable speed, reversible	Hydraulically driven, automatic variable speed, reversible
FUEL CAPACITY	800 L (210 US gal)	800 L (210 US gal)
DEF CAPACITY	80 L (21 US gal)	80 L (21 US gal)

TOP SPEED

LOW RANGE	1,9 km/h (1.2 mph)	1,8 km/h (1.1 mph)
HIGH RANGE	4,2 km/h (2.6 mph)	4,2 km/h (2.6 mph)

HYDRAULIC SYSTEM

PUMP, MAIN	Piston	Piston
PUMP, HARVESTER	Piston	Piston
PUMP, COOLING FAN	Piston	Piston
RESERVOIR	190 L (50 US gal)	190 L (50 US gal)
FILTRATION	(5) Spin-on, 7 micron full flow; (1) Water absorbing	(5) Spin-on, 7 micron full flow; (1) Water absorbing
CYLINDER, HOIST	130 mm (5.2 in) bore	130 mm (5.2 in) bore
CYLINDERS, STICK	(2) 110 mm (4.3 in) bore	(2) 110 mm (4.3 in) bore
CYLINDERS, LEVELING	N/A	(2) 180 mm (7 in) bore
HORSEPOWER CONTROL	Electronic speed sensing; All-speed antistall	Electronic speed sensing; All-speed antistall

UNDERCARRIAGE

TRACK FRAMES	R6-152-5 heavy-duty forestry Integral track guides/ramp angles	R7-163L heavy-duty leveling Integral track guides/ramp angles
TRACK CHAIN	F8/D6D 203 mm (8 in) pitch sealed and greased	FH400 215 mm (8.5 in) pitch
FINAL DRIVE	(2) Piston motors with brake valves; Infinitely variable speed	(2) Piston motors with brake valves; Infinitely variable speed
TRACTIVE EFFORT	280 kN (62,300 lbf)	367 kN (82,600 lbf)
GEARBOX	Triple reduction planetary type with brake	Triple reduction planetary type with brake
FRONT IDLER	Hydraulic track adjuster; Spring shock absorber	Hydraulic track adjuster; Spring shock absorber
SLIDES, UPPER	Replaceable, bolt-on; Optional rollers	Replaceable, bolt-on
ROLLERS, LOWER	(9) D6 single/double flange tractor type	(10) FH400 single/double flange excavator type
TRACK SHOE	610 mm (24 in) single/double grouser	610 mm (24 in) single grouser
▶ Optional	710 mm (28 in) single grouser tri-track 760 mm (30 in) double grouser tri-track 915 mm (36 in) triple grouser tri-track	710 mm (28 in) single grouser
LEVELING	N/A	20° forward; 6° rear; +/-17° side

BRAKES

TRACK	Friction disc; Automatic spring applied, hydraulic release	Friction disc; Automatic spring applied, hydraulic release
SWING	Friction disc; Manual spring applied, hydraulic release	Friction disc; Manual spring applied, hydraulic release

ROTATING UPPER

SWING DRIVE	7 rpm variable speed; 360° continuous rotation; Double reduction, swing drive planetary gearbox with brake; Piston swing motor
SWING BEARING	1 190 mm (47 in) ball circle diameter
ENCLOSURE	Hydraulically operated, retracting roof; Hinged access doors for engine and pump stack; Rear air intake for cooling system and engine

H845E

LH845E

ELECTRICAL

BATTERY	(2) 12 v	(2) 12 v
ALTERNATOR	110 amp, 24 v	110 amp, 24 v
SYSTEM VOLTAGE	24 v	24 v
LIGHTING	(14) LED; (4) LED service lights, engine enclosure	(14) LED; (4) LED service lights, engine enclosure
► Optional	High output LED lighting package	High output LED lighting package

OPERATOR'S STATION

CAB	Insulated, pressurized and isolation mounted; A/C, heater, defroster; skyVIEW and rearVIEW camera system; Full length polycarbonate windshield/entry door; Polycarbonate right and left side windows; One-piece polycarbonate side door window with steel guarded upper sliding section for ventilation; AM/FM digital stereo and auxiliary input port; Bluetooth® audio and hands-free calling; (2) Power points
CONTROLS	Hydraulic proportional for boom/travel/swing with electronic travel speed control limiter; Electronic for leveling and telescopic boom Electric switch for swing brake; Electronic control system with colour LCD display screen for machine monitoring and function adjustment
SEAT	Full suspension air ride, fully adjustable with angled mounting, heated and cooled; Armrest mounted Tigercat joysticks

OTHER STANDARD EQUIPMENT

Fuel suction strainer; Alarm for track movement	Fuel suction strainer; Alarm for track movement
---	---

OPTIONAL EQUIPMENT

Counterweight kit; Cold weather kit; Bolt-on tool box R7-150, R7-150EXP (extended pedestal), *R6152-N (narrow) undercarriages Electric hydraulic oil fill pump; RemoteLog® telematics system	Cold weather kit; Bolt-on tool box; *R7-163L-N (narrow) undercarriage Electric hydraulic oil fill pump RemoteLog® telematics system
--	---

FELLING HEAD

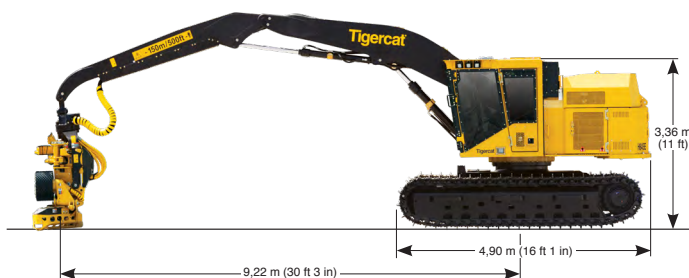
Flexible hydraulic system to accept various harvesting heads	Flexible hydraulic system to accept various harvesting heads
--	--

ER BOOM SYSTEM H845E AND LH845E

	2-PIECE ER BOOM	LONG REACH 2-PIECE ER BOOM	TELESCOPIC ER BOOM
MAXIMUM CUT RADIUS	8 210 mm (323 in)	9 230 mm (363 in)	11 310 mm (445 in)
MINIMUM CUT RADIUS	3 540 mm (139 in)	3 360 mm (132 in)	3 375 mm (133 in)
BARE PIN LIFT full reach	4 090 kg (9,000 lb)	3 495 kg (7,700 lb)	2 675 kg (5,900 lb)

H845E HARVESTER

SHOWN WITH LONG REACH 2-PIECE ER BOOM



LH845E HARVESTER

SHOWN WITH TELESCOPIC ER BOOM



ALL ENGINE POWER VALUES ARE QUOTED AT NET POWER, AS PER SAE J1349.
TIGERCAT RESERVES THE RIGHT TO AMEND THESE SPECIFICATIONS AT ANY TIME WITHOUT NOTICE.
WEIGHTS AND DIMENSIONS MAY VARY SUBJECT TO MACHINE OPTIONS AND CONFIGURATIONS.
FOR THE MOST CURRENT SPECIFICATIONS PLEASE REFER TO THE TIGERCAT WEBSITE OR MOBILE APP.

EMAIL	comments@tigercat.com
PHONE	519.753.2000
WEBSITE	www.tigercat.com
ADDRESS	54 Morton Ave. East, Brantford, Ontario Canada, N3R 7J7
MAIL	Box 637 N3T 5P9

© 2001 - 2020 Tigercat International Inc. All Rights Reserved. TIGERCAT, WIDERANGE, TURNAROUND, ER, EHS, LOW-WIDE, TEC, REMOTELOG and their respective logos, TOUGH RELIABLE PRODUCTIVE, TIGERCAT TV, "Tigercat Orange" and BETWEEN THE BRANCHES, as well as corporate and product identity, are trademarks of Tigercat International Inc., and may not be used without permission. TIGERCAT, TURNAROUND, WIDERANGE, EHS, LOW-WIDE, REMOTELOG and ER, and their respective logos are registered trademarks of Tigercat International Inc.