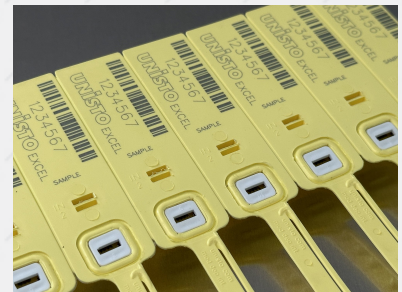
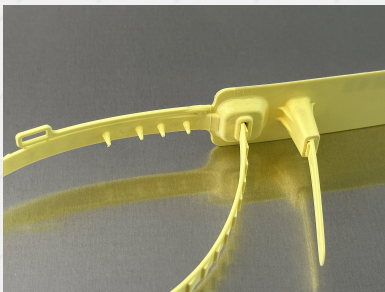


Unisto Excel



Special designed Pull-Tight Security Seal used for securely sealing of bags in the Post, Courier Service and Banks/Cash in Transit sectors. Unique design of a double locking mechanism for added security is even very popular in the Palm Oil industry to seal the valves on the Tankers. An all new four pronged metal insert prevents any manipulation. Solid strap construction of 7.0 x 2.2 mm withstands rough handling in the logistical process. Optional bar-coding for efficient data capture. Available in a range of colours.

Features of this security seal

Type of Seal

Adjustable Length Seals

Application

Bags, Roll Cages

Two different locking mechanisms complicate manipulation

Unique designed twin-locking feature firmly secures the seal in position to eliminate any possibility of the seal being pulled out

Various colours for logistical functions

Customer name/logo for clear identification

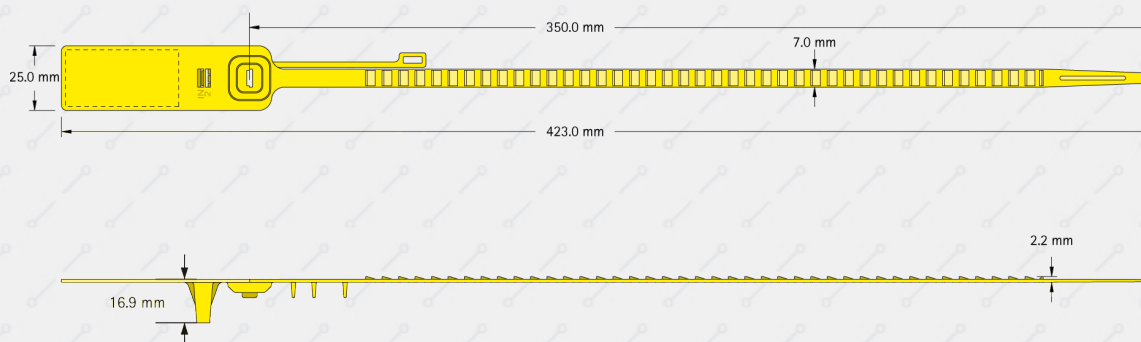
An all new 4-pronged spring metal insert that grips and cuts into the plastic ribbon when pulled back

Unique 4-pronged spring steel insert to prevent postsealing tampering

Cap is secured by unique hot-welding and leaves marks of attempted tampering

Ribbon snaps once there is any attempt to reverse the sealing

Minimum size



Material

Strap/housing: polypropylene (PP)
Locking spring: stainless steel

Tensile strength

Approx. 373N (38kg)

Numbering

Up to 7 digits

Barcoding

Interleaved 2/5 or barcode 128
Others on request

Customer name/logo

Foil printed or direct laser marked

Plastic Colours (foil printed)

Red, Blue, Yellow, White & Green

Plastic Colours (laser)

Pink, Light Blue, Light Yellow, Light Green & White

Packing

Mats of 10pcs, box of 1000 seals, carton of 2000seals

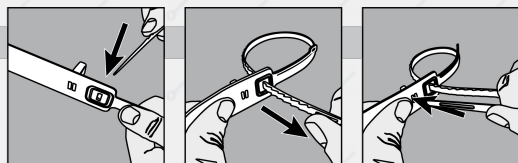
Packing size

box 350 mm 480 x 270 x 475 mm **carton** 350mm 545 x 485 x 483 mm

Storage

Seals should be stored in original box away from direct sunlight and chemical fumes. Store at 22°C/50% RH. Typical shelf life of seals made of PP and PA are approx. 18 months from date of manufacture. Nevertheless please do not order more than an annual quantity.

How to close



How to open

