

PALLET STACKERS

WS10 | WSX14 | WSRX15

WSRX15



WSX14



WS10



Long Operating Times
Powerful Performance
Compact and Agile

LITHIUM-ION PALLET STACKERS

CLARK electric pallet stackers effortlessly haul loads with their compact and manoeuvrable design. Fitted with lithium-ion technology these pallet stackers have a nominal capacity between 1000kg to 1500kg. The range is ideal for loading and unloading goods, lifting in tight spaces and transporting goods over short distances in applications such as warehousing and logistics. Durable and powerful, the lithium-ion battery features both rapid and opportunity charging capabilities while providing maximum power performance.



LOW MAINTENANCE COSTS

Long lasting and low maintenance lithium-ion batteries keeps costs over the life of the pallet stacker low. There are no requirements to refill water, control acid levels or account for harmful emissions.

OPPORTUNITY CHARGING

Recharge when convenient in moments of downtime to extend operating times without restricting the battery life. Suitable for multi-shift use where you can opportunity charge optimally eliminating those surprise low charge battery moments.



GREATER EFFICIENCY

Gain full power no matter what the charge percentage is. 'Signs of fatigue' aren't seen like in lead acid variants when they reach approximately 40% discharge.

WS10



max. 3280mm



max. 1000kg



WSX14



max. 4800mm



max. 1400kg



COMPACT

The CLARK range of lithium-ion pallet stackers are both compact and versatile for light and occasional use to more frequent usage applications. They are ideal for transporting goods over short distances and manoeuvring in tight spaces that larger materials handling equipment isn't capable of.



POWERFUL

Less energy consumption. Greater performance. The long lasting and low maintenance lithium-ion battery will have you moving heavier and larger loads with ease, all whilst working to eliminate operator strain. Work efficiently all with an intuitive and ergonomic design that makes operation easy.

RAPID CHARGE

Having the ability to opportunity charge coupled with the rapid charging the lithium-ion offers, keeps you working. Integrated charging plugs on the WS10 allows for easily charging through standard power points, while the WSX14 and WSRX15 include an external charger which allows opportunity charging to help avoid downtimes, ensuring maximum availability.

WSRX15 - PANTOGRAPHIC



max. 5500mm



max. 1500kg



PALLET STACKERS

WS10

CLARK's entry-level model – for those who want to handle simple tasks with minimal effort.



Ideal for Light Applications or as a Mobile Working Table

The WS10 is the entry-level model in our range of pallet stacker trucks. Ideal for transport over short distances or as a mobile work table.

Compact Design

The compact trucks have a small length to the face of forks. This makes them very flexible and easy to manoeuvre even in tight spaces.

Integrated Chargers

With low maintenance lithium-ion batteries and a built-in charger, the batteries can be recharged at any 230-volt socket.

Technical data: Electric Stacker WS10



Nominal capacity:
1000 kg



Lift height:
max. 3280 mm



Drive speed:
max. 4 km/h



Drive motor rating:
0.65 kW



Battery capacity:
24 V / 80 Ah

* Other options available

PALLET STACKERS

WSX14



Thanks to AC technology and the CLARK Speed Control System (CSC), you can optimize your material handling flow.



For Medium-Intensity Applications and as Multifunctional Vehicle

The WSX14 is suitable for industrial applications. They prove their worth wherever goods have to be transported over short distances.

CLARK Speed Control (CSC)

The CLARK Speed Control is made for easier manoeuvring in tight working areas. If the tiller is close to the chassis the maximum driving speed is automatically reduced.

Safety and Ergonomics

The centrally mounted tiller and the good visibility of the fork tips guarantee ergonomic and safe operation.

Technical data: Electric Stacker WSX14



Nominal capacity:
1400 kg



Lift height:
max. 4800 mm



Drive speed:
max. 6 km/h



Drive motor rating:
1.1 kW



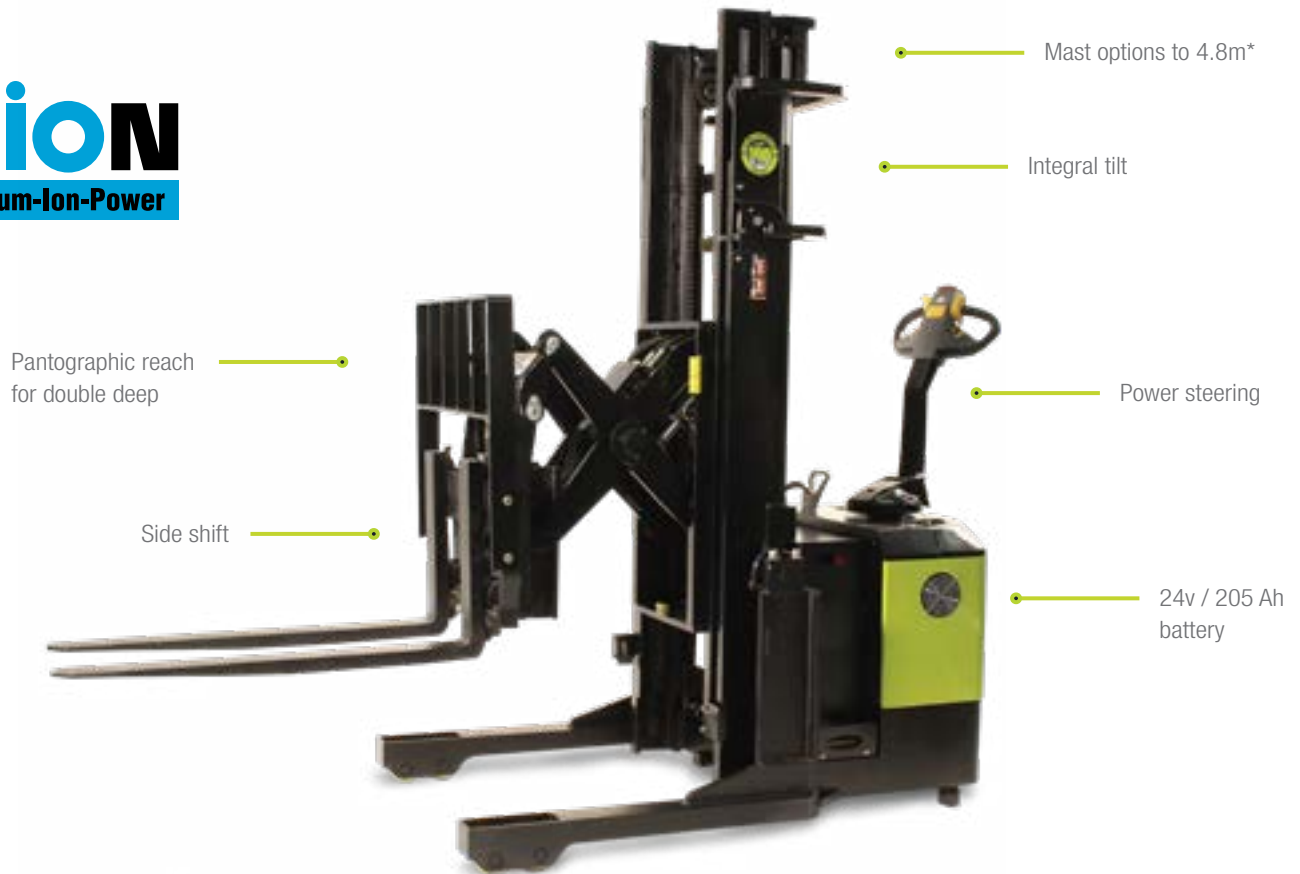
Battery capacity:
24 V / 205 Ah

* Other options available

PALLET STACKERS

WSRX15 Pantographic Reach

Productivity and ergonomics for heavy-duty operation with a lift height of up to 5500mm and double-deep reach.



Pure Productivity

The WSRX15 is perfect for transporting stocking and unloading goods. With double deep reach and the 4800mm lift height, working in higher racking levels is possible.

Power Steering as Standard Equipment

For longer distances and long periods of use the standard power steering ensures fatigue-free operation. Integral tilt and side shift adds to reducing operator fatigue

Pantographic Reach

The pantographic stroke extends the fork carriage beyond the units straddle legs with integral tilt and sideshift added for versatility

Technical data: Electric Stacker WSRX15



Nominal capacity:
1500 kg



Lift height:
max. 4800 mm



Drive speed:
max. 6 km/h



Drive motor rating:
3 kW



Battery capacity:
24 V / 205 Ah

* Other options available

Lithium Pallet Jacks Robust and Powerful

Also available in the CLARK range are lithium pallet trucks with load capacities from 1,000 to 2,000 kg. whether in industry, trade or logistics you always have the organisation of your warehouse under control. Even through the narrowest of aisles you can move up to two tons effortlessly with these compact and

maneuverable pallet trucks. Thanks to the compact dimensions of the pedestrian pallet jacks, safe handling is possible without any problems even in tight spaces. CLARK offers the right electric pedestrian pallet truck or pallet stacker solution to handle almost all of your business requirements.

An ideal alternative to traditional manual hand pallet jacks is the CLARK lithium pallet jacks. CLARK lithium ion pallet jacks work to eliminate operator strain, is safe & easy to maintain and doesn't require a licence to operate.

WPL25



Pallet Jack - Lithium-ion
1200 kg

WPI015



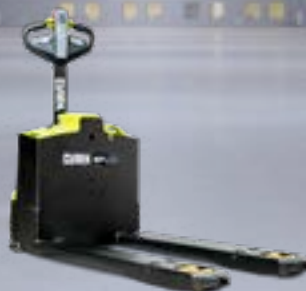
Pallet Jack - Lithium-ion
1500 kg

WPI018



Pallet Jack - Lithium-ion
1800 kg

WPI020



Pallet Jack - Lithium-ion
2000 kg

PRODUCT SPECIFICATIONS

WS10 | WSX14

1.1 Manufacturer (Abbreviation)		CLARK	CLARK	
Specifications	1.2 Manufacturer's designation	WS10	WSX14	
	1.3 Drive	Electric	Electric	
	1.4 Operator type	Pedestrian	Pedestrian	
	1.5 Nominal capacity	1000	1400	
	1.6 Rated capacity/rated load at full lift height	Q (kg)	800	1150
	1.7 Load centre distance	c (mm)	600	600
	1.8 Load distance	x (mm)	850	610
	1.9 Wheelbase	y (mm)	1210	1350
	Weight	2.1 Service weight	kg	601
2.2 Axle loading, laden front/rear		kg	683 / 860	815 / 1905
2.3 Axle loading, unladen front/rear		kg	420 / 123	805 / 515
Tyres, Chassis	3.1 Tyres		Polyurethane	Polyurethane
	3.2 Tyre size, front	(mm)	Ø 210 x 70	Ø 230 x 75
	3.3 Tyre size, rear	(mm)	Ø 100 x 50	Ø 102 x 73
	3.4 Additional wheels (castor wheels)	(mm)	Ø 100 x 50	Ø 85 x 48
	3.5 Wheels, number front/rear (x = driven wheels)		1 x + 1/4	1 x + 2 / 4
	3.6 Tread, front	b10 (mm)	533	580
	3.7 Tread, rear	b11 (mm)	1060 / 1160 / 1260 / 1360	1170 / 1270 / 1370
Dimensions	4.4 Height, upright lowered	h1 (mm)	2236	2303
	4.4 Freelif	(mm)	-	150
	4.9 Lift height	h3 (mm)	3280	3590
	4.15 Height, mast extended	h4 (mm)	4195	4505
	4.19 Height tiller in driving position min./max.	h14 (mm)	860 / 1200	990 / 1500
	4.20 Height of wheel arms	h8 (mm)	100	100
	4.21 Overall length	l1 (mm)	1650	1987
	4.22 Length to face of forks	l2 (mm)	580	917
	4.25 Overall width	b1/b2 (mm)	1135 / 1235 / 1335 / 1435	1270 / 1370 / 1470
	4.32 Fork dimensions	s • e • l (mm)	35 / 100 / 1070	40 / 100 / 1070
	4.33 Fork carriage width	b3 (mm)	800	800
	4.34 Distance between wheel arms/loading surfaces	(mm)	100	1070 / 1170 / 1270
	4.35 Distance between fork arms	b5 (mm)	200 - 780	200 - 760
	4.35 Ground clearance	m1/2 (mm)	30	50
	Performance	5.1 Travel speed, laden/unladen	km/h	4 / 4.5
5.2 Lift speed, laden/unladen		m/s	0.12 / 0.22	0.127 / 0.23
5.3 Lowering speed, laden/unladen		m/s	0.12 / 0.11	0.26 / 0.20
5.8 Max. gradeability, laden/unladen		%	3 / 10	8 / 10
5.10 Service brake			Electromagnetic	Electromagnetic
Electrics		6.1 Drive motor rating S2 60 min	kW	0.65
	6.2 Lift motor rating at S3 15 %	kW	2.2	3.0
	6.3 Battery acc. to DIN 43531/35/36 A, B, C, no		No	No
	6.4 Battery voltage/nominal capacity	V/Ah	24 / 80	24 / 210
	6.5 Battery weight	kg	-	62
	6.6 Energy consumption acc. to VDI cycle		-	-
Misc.	- Battery type		Lithium-ion	Lithium-ion
	8.1 Type of drive unit		DC	AC
	10.5 Steering design		Mechanical	Mechanical
10.7 Sound pressure level at the driver's position	dB(A)	74	74	

PRODUCT SPECIFICATIONS

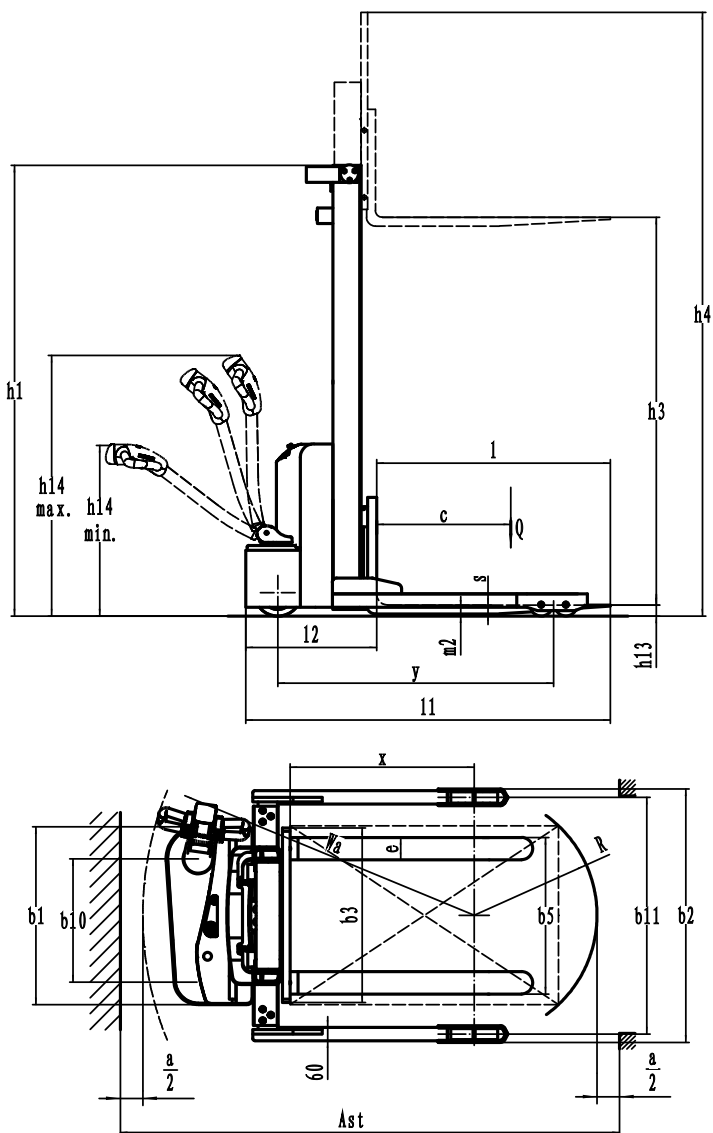
WSRX15

1.1 Manufacturer (Abbreviation)		CLARK
Specifications	1.2 Manufacturer's designation	WSRX15
	1.3 Drive	Electric
	1.4 Operator type	Pedestrian
	1.5 Nominal capacity	1500
	1.6 Rated capacity/rated load at full lift height	Q (kg) 1000
	1.7 Load centre distance	c (mm) 600
	1.9 Wheelbase	y (mm) 1395
	Weight	2.1 Service weight
2.2 Axle loading, fork retracted, laden front/rear		kg 1250 / 615
2.3 Axle loading, fork retracted, unladen front/rear		kg 1075 / 2290
2.4 Axle loading, fork advanced, laden front/rear		kg 1150 / 715
2.5 Axle loading, fork advanced, unladen front/rear		kg 310 / 3055
Tyres, Chassis	3.1 Tyres	Polyurethane
	3.2 Tyre size, front	(mm) Ø 260 x 105
	3.3 Tyre size, rear	(mm) Ø 102 x 73
	3.4 Additional wheels (castor wheels)	(mm) Ø 100 x 73
	3.5 Wheels, number front/rear (x = driven wheels)	1 x 2 / 4
	3.6 Tread, front	b10 (mm) 0
	3.7 Tread, rear	b11 (mm) 1000
Dimensions	4.1 Tilt of upright / fork carriage	a/b deg 2 / 4
	4.2 Height, upright lowered	h1 (mm) 2230
	4.3 Freelift	h2 (mm) 1270
	4.4 Lift height	h3 (mm) 4800
	4.5 Height, mast extended	h4 (mm) 5760
	4.8 Height of wheel arms	h8 (mm) 135
	4.19 Overall length	l1 (mm) 2340
	4.20 Length to face of forks	l2 (mm) 1270
	4.21 Overall width	b1/b2 (mm) 850 / 1110
	4.22 Fork dimensions	s • e • l (mm) 40 / 100 / 1070
	4.23 Fork carriage width	b3 (mm) 800
	4.24 Distance between wheel arms/loading surfaces	b4 (mm) 900
	4.25 Outside width of the forks	b5 (mm) 200 - 780
	4.31 Reach distance	l4 (mm) 590
	4.32 Ground clearance	m1 (mm) 70
Performance	5.1 Travel speed, laden/unladen	km/h 5.5 / 6
	5.2 Lift speed, laden/unladen	m/s 0.11 / 0.14
	5.3 Lowering speed, laden/unladen	m/s 0.24 / 0.24
	5.6 Reaching speed laden	m/s 0.12 / 0.12
	5.8 Max. gradeability, laden/unladen	% 6 / 10
	5.10 Service brake	Electromagnetic
Electrics	6.1 Drive motor rating S2 60 min	kW 3.3
	6.2 Lift motor rating at S3 15 %	kW 3
	6.3 Max. battery size allowed	(mm) 815 x 208 x 630
	6.4 Battery voltage/nominal capacity	V/Ah 24 / 205
	6.5 Battery weight	kg 160
Misc.	- Battery type	Lithium-ion
	8.1 Type of drive unit	AC
	8.2 Steering design	Electronic
	8.4 Sound pressure level at the driver's position	dB(A) 74

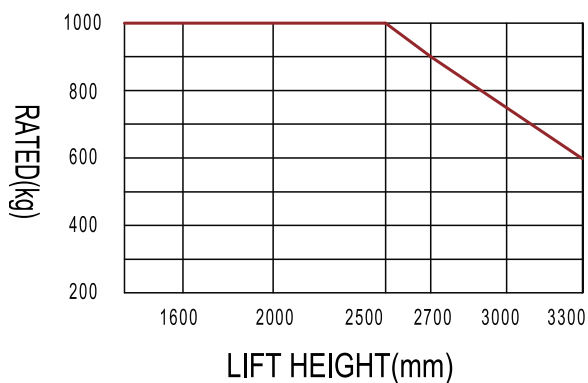
PRODUCT SPECIFICATIONS

WS10 | WSX14

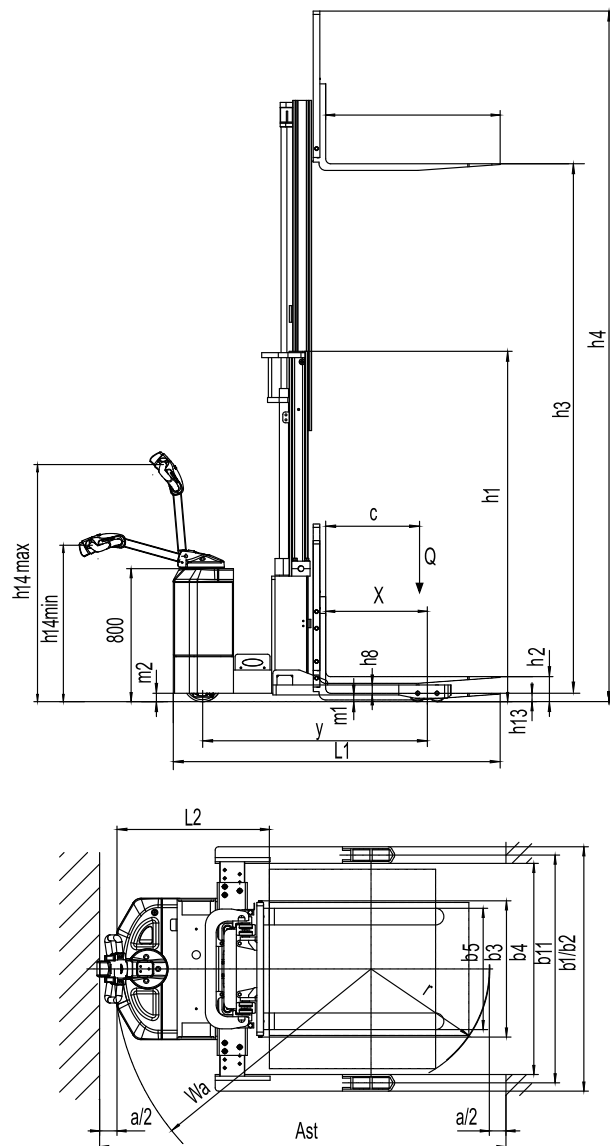
WS10



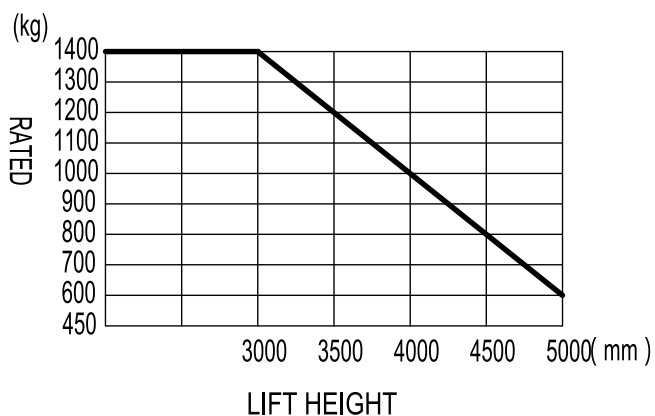
RATED CAPACITIES GRAPH



WSX14



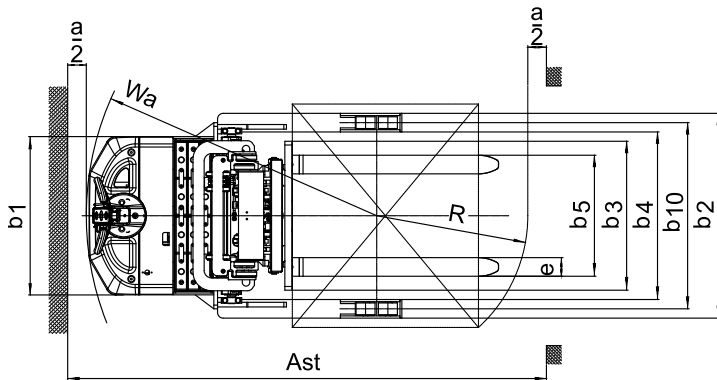
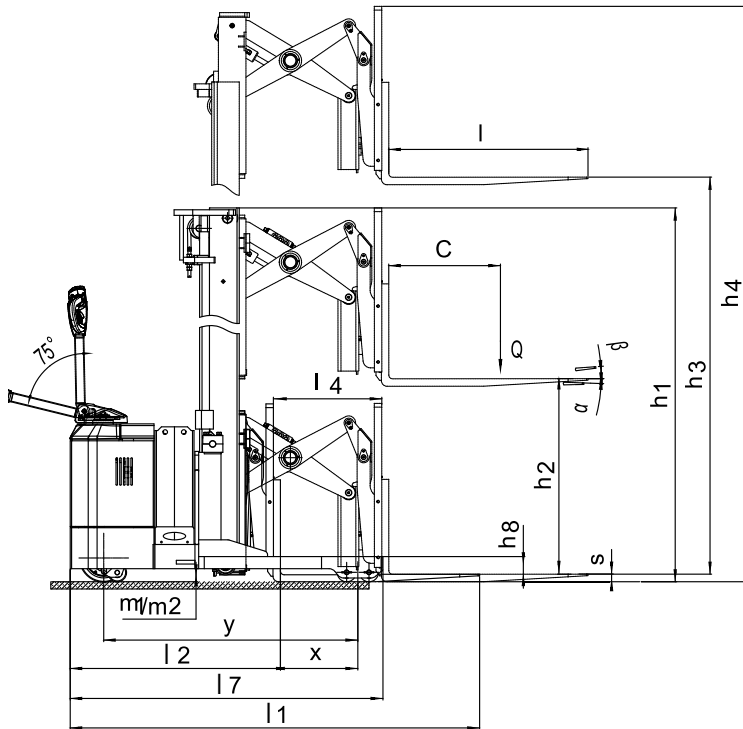
RATED CAPACITIES GRAPH



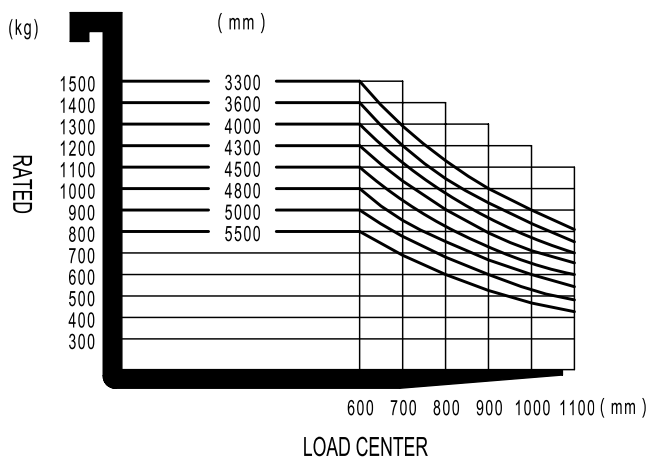
PRODUCT SPECIFICATIONS

WSRX15

WSRX15



RATED CAPACITIES GRAPH



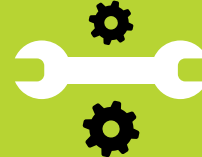


PALLET STACKERS
WS10 | WSX14 | WSRX15



GLOBAL PRESENCE

CLARK products are in operation all around the world.



RELIABLE SPARE PARTS SERVICE

CLARK has parts warehouses in USA, South Korea, Brazil, China, Australia, Germany and Vietnam.



COMPREHENSIVE DEALER NETWORK

Over 550 sales & distribution partners in more than 90 countries ensure a high level of availability of our products and services.



EXCELLENT QUALITY

CLARK is the forerunner in high-quality standards and innovative product developments.



CLARK International South Pacific
30 Salisbury Road
Hornsby, NSW 2077 Australia
Tel: 1800 005 747
Website: www.clarkforklifts.com.au

CLARK International Singapore
2 Venture Drive, Vision Exchange
Singapore, 608526
Tel: 65 6863 4083
Website: www.clarkisp.com.au