

DIECI
AUSTRALIA

ZEUS | 33.11





ZEUS POWER & AGILITY FOR MAXIMUM EFFICIENCY

The needs on construction sites are changing. Management costs must be reduced and machine productivity continuously improved. Dieci meets the demands of customers with more versatile, more robust and more reliable machines that are easy to drive and operate.

The **Zeus 33.11** is a powerful and compact telehandler, designed to give the user the right balance between power and agility, wherever it is necessary to handle heavy loads in confined spaces, in both the construction and mining sector.

Great power, excellent handling, precision movement control, sound proofing for absolute comfort, three steering modes including 2WS, 4WS and crab steering, as well as the intelligently designed control layout, makes the Zeus simple, intuitive and comfortable to use.

The Zeus can be fitted with a full range of accessories, making it an **incredibly versatile** machine.



ABSOLUTE COMFORT: ITALIAN DESIGN AND STYLE

Dieci telehandlers have always been a combination of **comfort** and **functionality** which makes us stand out all over the world.

Reliability & Productivity

Ideal for work environments where there is a need to handle large volumes and reduce work cycles. Maintenance is straightforward, with durable components and materials designed to last.

Advanced Telescopic Boom

Made of high resistance steel, while load sensing and flow sharing distributors allow for more simultaneous movements during operation.

Not Only Power

The Zeus responds to controls in a fluid way, with precision and promptness, thus guaranteeing exceptional work comfort in complete safety.

Perfect Climate

Equipped with an integrated electric driver's window, standard heater and a semi-automatic air conditioning system with six outlet vents, this setup allows perfect air circulation inside the cabin for maximum operator comfort.

Maximum Safety

The ROPS-FOPS approved cab is designed with a safety cell to provide maximum safety to the operator at all times. Dieci telehandlers comply with AS1418.19 / 10896.1.

Deadman sensor, combined with operator presence sensor in the seat, prevents accidental operation.

The **Load Limiter Device** analyses vehicle stability in real time and inhibits any aggravating movements when the pre-set safety limits are reached.

Zeus 33.11

10.6m

Max Reach

3,300kg

Max Capacity

125hp / 93kW

Nominal Power

EWP Options Available

Pre-arrangement for man basket remote control enables boom and aerial platform operation directly from the basket, ensuring total autonomy and full safety. Compliant with Australian EWP standard AS 1418.10.

Single Compensation Cylinder

Patented by Dieci - is located inside the lifting ram, ensures that the load on the boom is balanced at all times, thereby improving durability.

Inching Pedal

An essential control that allows travel speed to momentarily slow down or come to a stop while still offering maximum power to boom functions to increase precision and productivity for delicate operations.

Hydrostatic Transmission

Complete with a servo controlled 2 speed gear box and constantly varying hydrostatic drive, which guarantees top-end speed and low-end torque.

Panoramic Views

The large, curved windows of the cab offer a complete 360° outside view with uninterrupted visibility. Integrated LED worklights allow better visibility at night.

Proportional 4-in-1 Joystick

The boom can be fully operated by the hydraulic control distributor-single joystick with proportional and simultaneous controls for easier and more practical direction control.

Side Shift Carriage

Equipped with a side shift carriage, making repositioning and stacking loads tightly, an effortless task.

Comfort & Ease of Access

With soundproofing, an adjustable steering wheel (height and depth), storage compartments and various accessories such as the air suspension seat, enable operation in total comfort.



TECHNICAL DATA

PERFORMANCE	
Maximum capacity	3,300 kg
Maximum lifting height	10.6 m
Maximum horizontal extension	7.45 m
Fork swiveling angle	146 °
Pull-out force	5,700 daN
Towing force	7,300 daN
Maximum climb angle	40 %
Unladen weight	8,200 kg
Maximum speed	40 km/h

ENGINE	
Brand	FPT
Nominal power	125 hp / 93 kW (@ 2,200 rpm)
Operation	4-stroke / diesel
Injection	Mechanical direct
Number and arrangement of cylinders	4, vertical inline
Displacement	4,485 cm ³
Emission standard	Stage IIIA/Tier 3
Cooling	Liquid
Intake	Turbocharger after-cooler

TRANSMISSION	
Type	Hydrostatic transmission with variable displacement pump
Hydraulic motor	Hydrostatic with continuous automatic adjustment
Reversal	Electro-hydraulic
Inching control	With hydraulic pedal for controlled forward movement
Gearbox	Servo-controlled 2-speed

HYDRAULIC SYSTEM	
Hydraulic pump type	Gear pump for power steering and movement
Hydraulic pump capacity	130 l/min
Maximum operating pressure	24 MPa (3,481 psi)
Boom hydraulic sockets	With quick couplings
Distributor control	Proportional 4-in-1 joystick
Distributor type	Hydraulic distributor-single joystick with proportional controls
Outriggers	2 independent outriggers

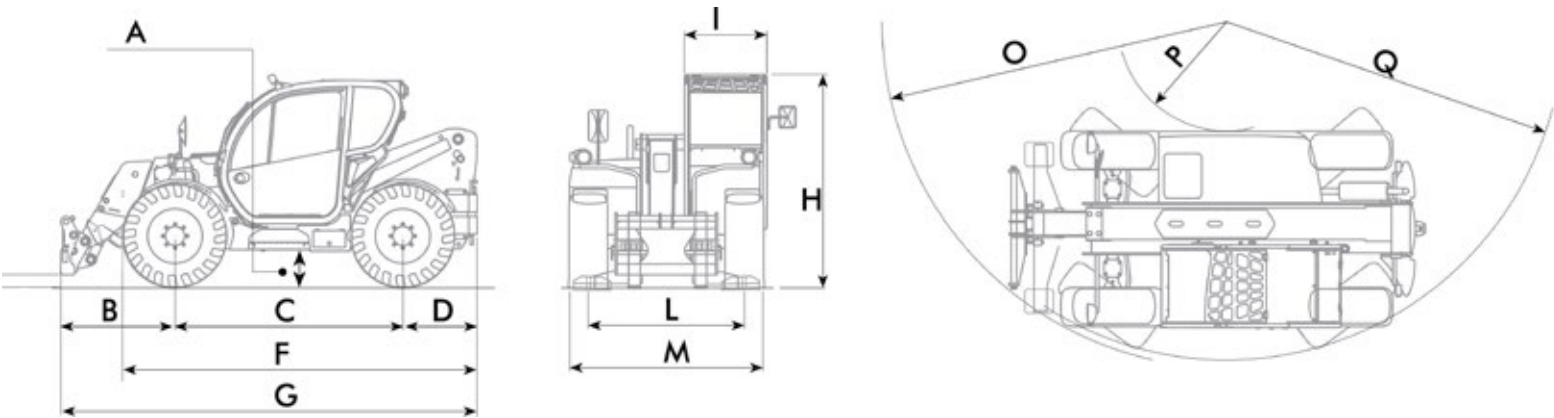
TANK CAPACITIES	
Hydraulic tank	140 l
Diesel tank	160 l

DIFFERENTIAL AXLES	
Steering axles	2 steering, with 4 epicyclodial reduction gears
Type of steering	4 wheels / transversal / 2 wheels
Park brake	Negative actuation with electrical control

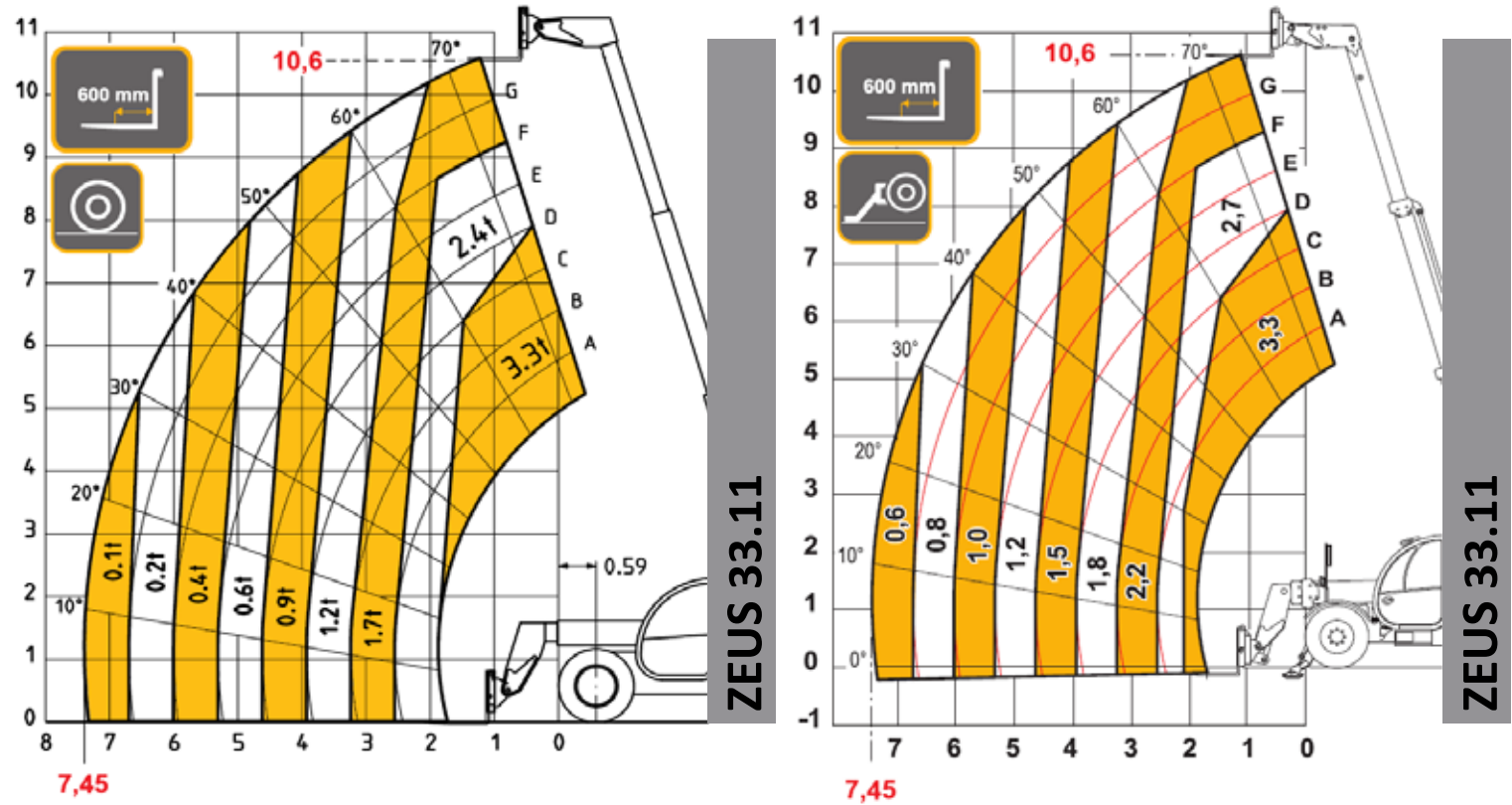
TYRES	
Size	400/70x24"

ZEUS 33.11

DIMENSIONS	
A	390 mm
B	1,730 mm
C	2,600 mm
D	970 mm
F	4,110 mm
G	5,300 mm
H	2,360 mm
I	940 mm
L	1,780 mm
M	2,290 mm
O	5,150 mm
P	950 mm
Q	4,000 mm



LOAD CHARTS





NEW SOUTH WALES

Sydney Branch

1/5 Melito Court,
Prestons, NSW 2170

WESTERN AUSTRALIA

Perth Branch

32 Allott Way,
Maddington, WA 6109

VICTORIA

Melbourne Branch

169 Studley Court,
Derrimut, VIC 3026

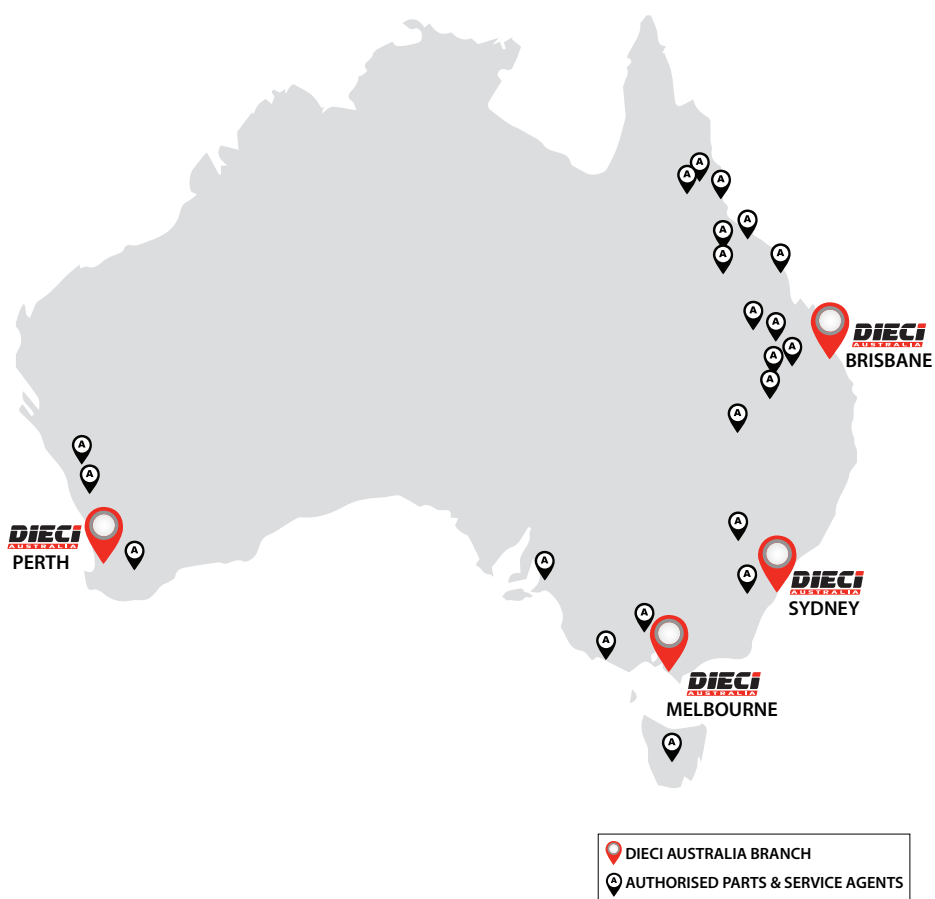
QUEENSLAND

Brisbane Branch

1/7 Australand Drive,
Berrinba, QLD 4117

Brisbane North Branch

69 Griffin Crescent,
Brendale, QLD 4500



www.dieciaustralia.com.au | ph: 1300 888 479 | sales@dieciaustralia.com.au

Distributed by Dieci Australia

Illustrations and photos show the standard international models and may or may not include optional equipment, accessories, customer installed or modified parts, optional parts and all standard equipment with some differences in colour and features. Machine specifications are subject to change without notice and additional load charts and machine or attachment specifications may be available on request. Please refer to the user and maintenance manuals located on Dieci Australia's website for correct machine and attachment operation.

Printed in Australia

V1125