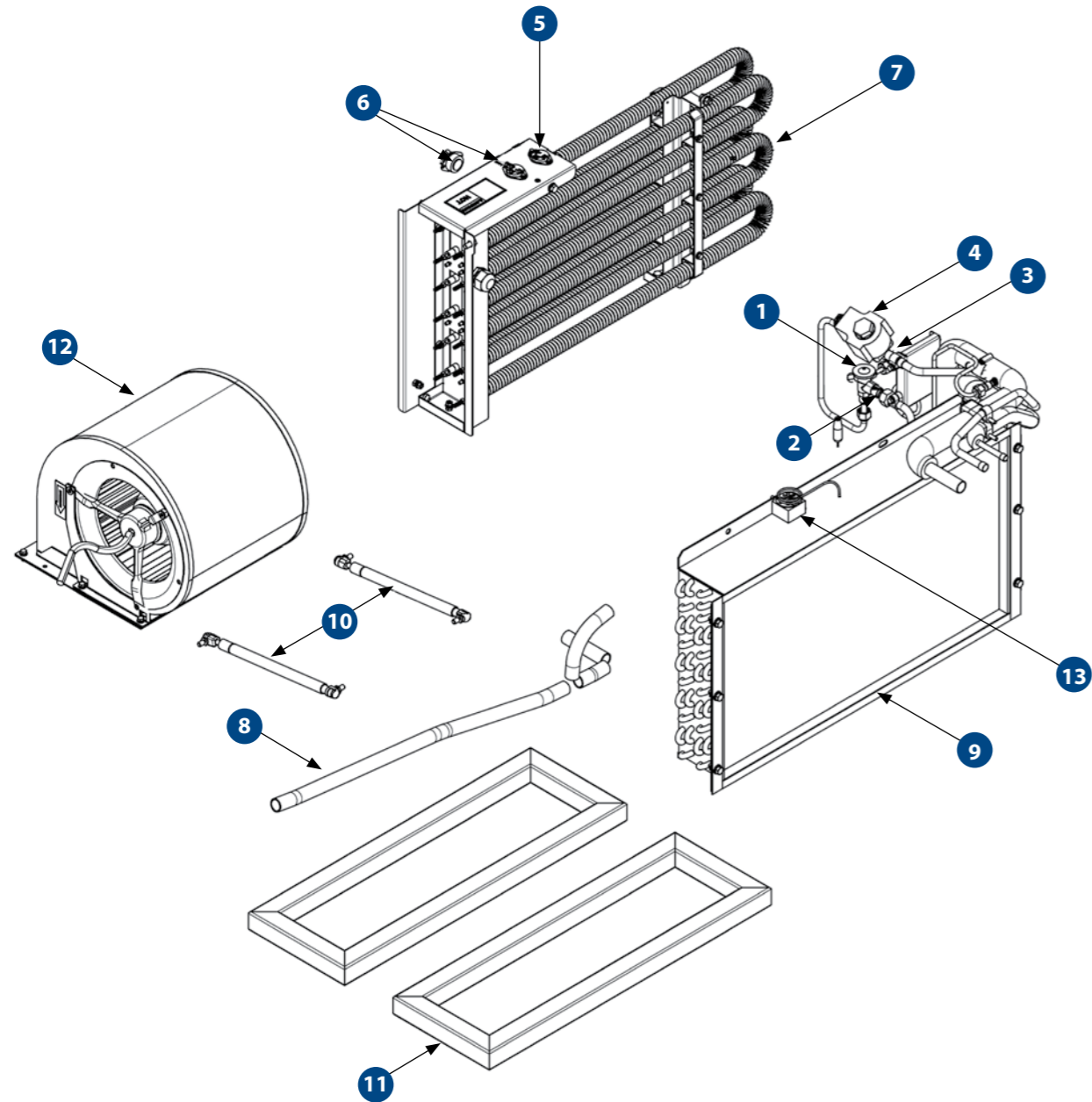




MPR9VX1 - EVAPORATOR

ROOFTOP PACKAGED HVAC UNIT

MPR9VX1
Rooftop Packaged HVAC 10kW 575VAC with Heating (12kW)



SPARE PARTS

PART NO.	DESCRIPTION	QTY
AS21341555	RETURN AIR FILTER ASSEMBLY (OPTIONAL)	1
H0082092	RETURN AIR FILTER ASSEMBLY COIL MOUNT (OPTIONAL)	2
1 AU521508	TX ORIFICE #06	1
2 AU521509	TX VALVE 2T 3/8" IN 1/2" OUT 1/4" EQ R134A	1
3 AU522042	SOLENOID VALVE 1/2" SOLDER NC	1
4 AU668140	COIL SOLENOID 24VDC TYPE 1	1
5 AU681009	KLIXON TEMPERATURE SENSOR 1	1
6 AU6811013	TAT KLIXON 40°C N/C AUTO	2
7 AU691C041	HEATER ELEMENT 277V 2500W	6
8 H0064347	HOSE PVC 20MM BORE BRAIDED	1.1m
9 H0070297	EVAPORATOR COIL	1
10 H0080806	GAS STRUT	2
11 H0080812	RA/SA OPENING SEAL	2
12 H0082201	SUPPLY AIR FAN ASSEMBLY	1
13 UE016	THERMOSTAT DEICE STUD	1
KNHV30016	MPR9MX1 PIPE KIT	1
AU862211	SEAL RUBBER	4.5m

SPARE PARTS LIST CONTINUED NEXT PAGE

COMPANION ITEMS

PART NO.	DESCRIPTION
EB9P4X	*Right Hand Pressuriser Assembly 24V
H0081203	*Left Hand Pressuriser Assembly 24V EB9
H0146199	Adapter Frame Assembly
H0107836	Supply Air Damper Assembly
H0184867	Air Duct Front Panel
H0082091	RA Filter Assembly - Coil Mount MPR9
H0087360	Spigot Supply Air M9 (152-203)
H0099206	Spigot Return Air M9 (152-203)
H0099206	Supply Air Plenum Assembly
H0099206	Return Air Plenum C/W Filter

*looking from evap end of unit

SPECIFICATIONS

	METRIC	IMPERIAL
Cooling Capacity	10.0 kW	34120 BTU
Heating Capacity	15.0 kW	51182 BTU
Fan Speeds	2 (man. control) / 3 (elec. control)	2 (man. control) / 3 (elec. control)
Air Flow	610 l/s	1293 CFM
Fresh Air	22 l/s	47 CFM
Power Supply	415/460 VAC / 3 Phase, 50/60Hz	415/460 VAC / 3 Phase, 50/60Hz
Current Draw	30 A	30 A
Refrigerant	R134a	R134a
Minimum Ambient Temperature	-10°C	14°F
Maximum Ambient Temperature	54°C	129°F
Packaged Weight (nominal)	457.0 Kg	1005.4 lbs
Technical Manual Reference	HD0031057	HD0031057
Dimension (L X W X H)	1512mm X 1145 mm X 980mm	59.5in X 45.1in X 28.6in

MAINTENANCE

MONTHLY / 450 HOURS

AS21341555	RETURN AIR FILTER ASSEMBLY (OPTIONAL)
H0082092	RETURN AIR FILTER ASSEMBLY COIL MOUNT (OPTIONAL)

ANNUAL / 5,400 HOURS

AU531356	LIQUID LINE FILTER
----------	--------------------

3 YEAR / 16,200 HOURS

UE016	THERMOSTAT DEICE STUD
AU521509	TX VALVE 2T 3/8" IN 1/2" OUT 1/4" EQ R134A
AU521508	TX ORIFICE #06
AU862211	SEAL RUBBER

Please contact SIGMA for more information including details on an overhaul scope and interval. Maintenance periods and scope are dependent on application and site conditions, and are to be used as a guide.

- DRAGLINE & SHOVEL
- DRILL
- EXCAVATOR
- DOZER
- TRUCK
- WHEEL LOADER
- CONSTRUCTION
- UNDERGROUND EQUIPMENT
- INDUSTRIAL
- SMELTERS
- RAIL SPECIAL VEHICLES

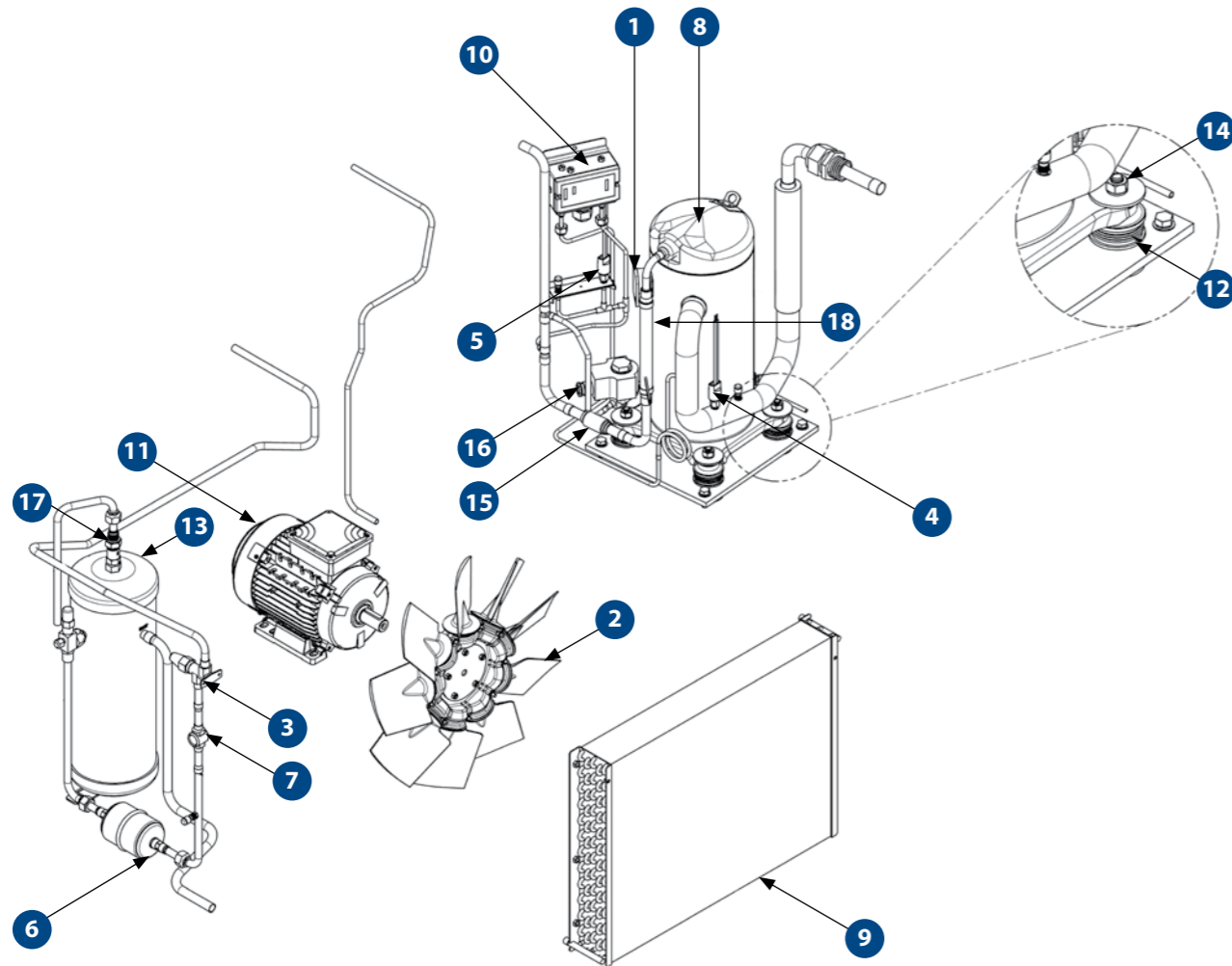


MPR9VX1 - CONDENSER

ROOFTOP PACKAGED HVAC UNIT

MPR9VX1

Rooftop Packaged HVAC 10kW 575VAC with Heating (12kW)



SPARE PARTS

PART NO.	DESCRIPTION	QTY
1	AU230818 COMPRESSOR LEAD	1
2	AU420157 CONDENSER FAN	1
3	AU517256 PCAV 1/2 SOLDER	1
4	AU523365 LOW PRESSURE SWITCH 1/4" FF 205kPa	1
5	AU523655 HIGH PRESSURE SWITCH 1/4" FF 2415kPa	1
6	AU531356 LIQUID LINE FILTER	1
7	AU533136 LIQUID MOISTURE INDICATOR	1
8	652A20006 COMPRESSOR ASSEMBLY	1
9	H0072613 CONDENSER COIL	1
10	AU523112 DUAL PRESSURE CONTROL	1
11	H0080329 CONDENSER FAN MOTOR	1
12	H0103172 VIBRATION MOUNT	4
13	AU160C012 RECEIVER LIQUID VERT 6 X 18 MP	1
14	H0093856 COMPRESSOR SPACER WASHER	4
15	AU517622 VALVE CHECK 5/8" SOLDER STRAIGHT	1
16	AU522021 SOLENOID VALVE 3/8" SOLDER NC AU668140 COIL SOLENOID 24VDC TYPE 1	1
17	AU527126 RELIEF VALVE 3/8" MNPT X 2.7MPa	1
18	H0080748 VIBRATION ELIMINATOR	1
	KNHV30016 MPR9MX1 PIPE KIT	1
	AU542026 REFRIGERANT OIL	1

SPARE PARTS LIST CONTINUED NEXT PAGE

SPECIFICATIONS

	METRIC	IMPERIAL
Cooling Capacity	10.0 kW	34120 BTU
Heating Capacity	15.0 kW	51182 BTU
Fan Speeds	2 (man. control) / 3 (elec. control)	2 (man. control) / 3 (elec. control)
Air Flow	610 l/s	1293 CFM
Fresh Air	22 l/s	47 CFM
Power Supply	415/460 VAC/ 3 Phase, 50/60Hz	415/460 VAC/ 3 Phase, 50/60Hz
Current Draw	30 A	30 A
Refrigerant	R134a	R134a
Minimum Ambient Temperature	-10°C	14°F
Maximum Ambient Temperature	54°C	129°F
Packaged Weight (nominal)	457.0 Kg	1005.4 lbs
Technical Manual Reference	HD0031057	HD0031057
Dimension (L X W X H)	1512mm X 1145 mm X 980mm	59.5in X 45.1in X 28.6in

MAINTENANCE

ANNUAL / 5,400 HOURS

AU531356 LIQUID LINE FILTER

3 YEARS / 16,200 HOURS

- AU523365** LOW PRESSURE SWITCH 1/4" FF 205kPa
- AU523655** HIGH PRESSURE SWITCH 1/4" FF 2415kPa
- H0103172** VIBRATION MOUNT
- AU542026** REFRIGERANT OIL
- AU523112** DUAL PRESSURE CONTROL
- H0080748** VIBRATION ELIMINATOR
- AU517622** VALVE CHECK 5/8" SOLDER STRAIGHT

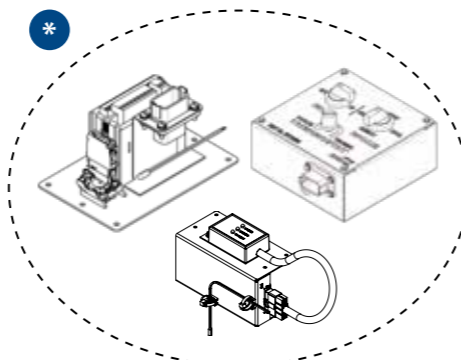
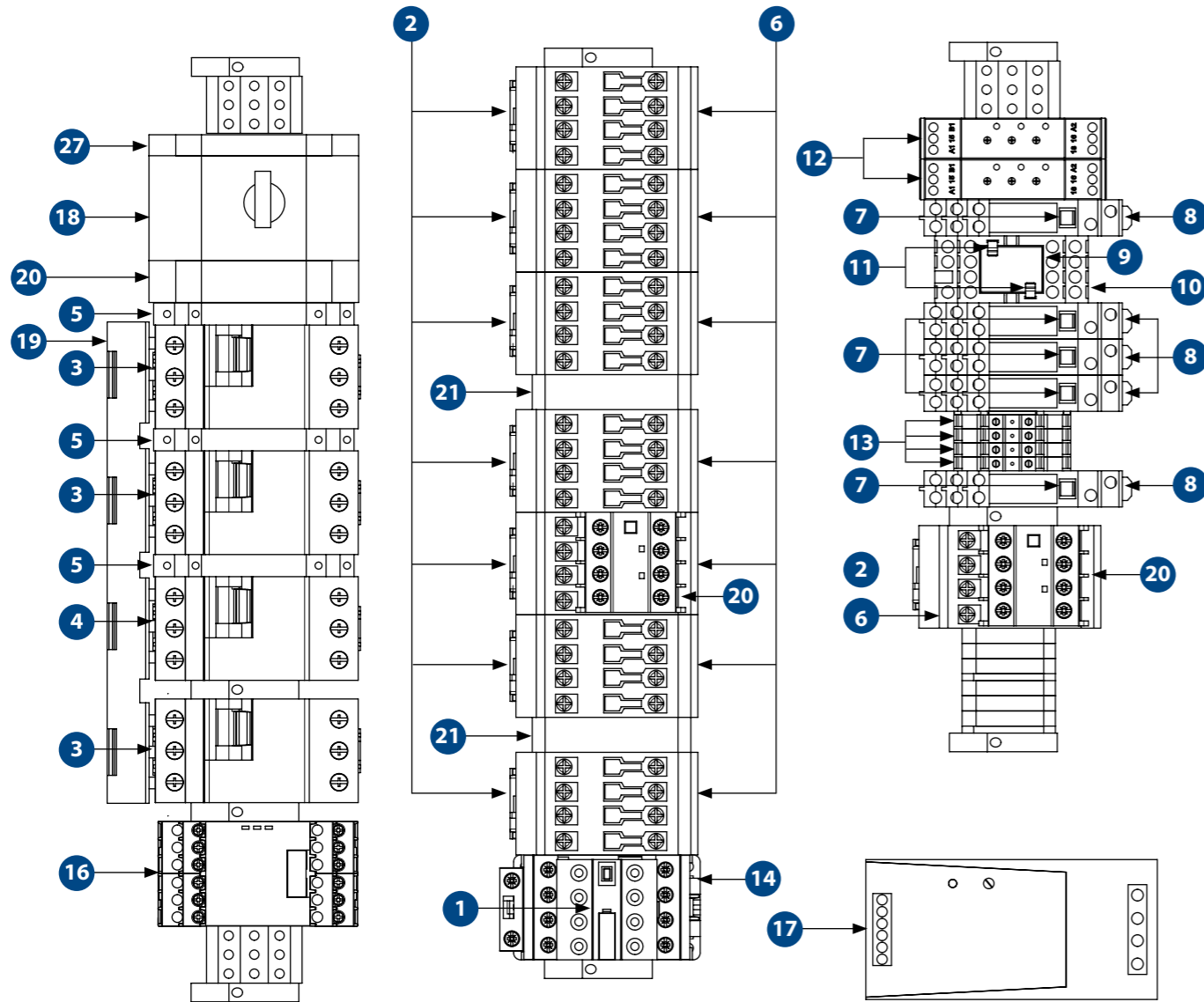
Please contact SIGMA for more information including details on an overhaul scope and interval. Maintenance periods and scope are dependent on application and site conditions, and are to be used as a guide.



MPR9VX1 - ELECTRICAL

ROOFTOP PACKAGED HVAC UNIT

MPR9VX1
Rooftop Packaged HVAC 10kW 575VAC with Heating (12kW)



* SEE H0134546 (PAGE 183) OR H0082302 (PAGE 184)
FOR PILOT CONTROL SPARE PARTS

SPARE PARTS

PART NO.	DESCRIPTION	QTY
1	642B20039 AUX. CONTACT. 2NO+2NC ABB AF CONTACTORS	1
2	642E058 SURGE SUPPRESSOR	8
3	642M076 INT.AUTOM.TRIP 6A GV2-LE10	3
4	642M279 DISYUNTOR MAGNETOTERMICO GV2-LE20	1
5	AU641454 CIRCUIT BREAKER	4
6	AU651544 ABB CONTACTOR	8
7	AU661040 RELAY 8 PIN 24VDC 2 POLES	5
8	AU661041 RELAY BASE	5
9	AU661044 24V 4 POLE RELAY	1
10	AU661045 RELAY BASE	1
11	AU661046 RELAY CLIPS	2
12	AU672500 TIMER ON DELAY 24VDC 0.1SEC-100HR 1 POLE	2
13	AU674401 DIODE TERMINAL BLOCK	4
14	H0060331 CONTACTOR	1
15	H0082714 AUXILIARY CONTACT BLOCK	2
16	H0170133 PHASE DETECTION RELAY	1
17	H0222338 CONVERTER	1
18	H0222339 CIRCUIT BREAKER	1
19	H0222341 SIDE MOUNTED BUSBAR	1
20	H0236005 SHUNT TRIP, 380-400VAC 50HZ	1
21	TTP5322 MECHANICAL INTERLOCK	2
22	H0249472 CIRCUIT BREAKER	1
AU862211	SEAL RUBBER	2.5m

* SEE H0134546 (PAGE 183) OR H0082302 (PAGE 184)
FOR PILOT CONTROL SPARE PARTS

SPARE PARTS LIST CONTINUED ON PREVIOUS PAGE

SPECIFICATIONS

	METRIC	IMPERIAL
Cooling Capacity	10.0 kW	34120 BTU
Heating Capacity	15.0 kW	51182 BTU
Fan Speeds	2 (man. control) / 3 (elec. control)	2 (man. control) / 3 (elec. control)
Air Flow	610 l/s	1293 CFM
Fresh Air	22 l/s	47 CFM
Power Supply	415/460 VAC/ 3 Phase, 50/60Hz	415/460 VAC/ 3 Phase, 50/60Hz
Current Draw	30 A	30 A
Refrigerant	R134a	R134a
Minimum Ambient Temperature	-10°C	14°F
Maximum Ambient Temperature	54°C	129°F
Packaged Weight (nominal)	457.0 Kg	1005.4 lbs
Technical Manual Reference	HD0031057	HD0031057
Dimension (L X W X H)	1512mm X 1145 mm X 980mm	59.5in X 45.1in X 28.6in

COMPANION ITEMS

PART NO.	DESCRIPTION
H0134546	Manual Control Unit
H0082302	Electronic Control Unit
H0264933	Custom Operators Seat Control Option