

# Platinum LAB Cleanroom Troffer

The Platinum LAB™ is a commercial troffer suited to plaster recessed applications in medical and cleanroom environments. Constructed from high grade steel and finished off with a low glare LED optimised diffuser and integrated clamp brackets, the Platinum LAB™ is packed full of design features.

## PLATINUM LAB

### Application

Developed as a lighting solution to meet the requirements of specialist applications in medical and hygienic environments. Platinum LAB™ is rated at IP65 from all angles and COI compliant as standard.

Suited to applications:

- ◆ Operating theatres
- ◆ Cleanroom environments
- ◆ Healthcare applications
- ◆ Laboratories



- IP65
- DALI TYPE 8
- DALI
- 5 YEARS
- 3000K CCT
- 3500K CCT
- 4000K CCT

### Design Specifications

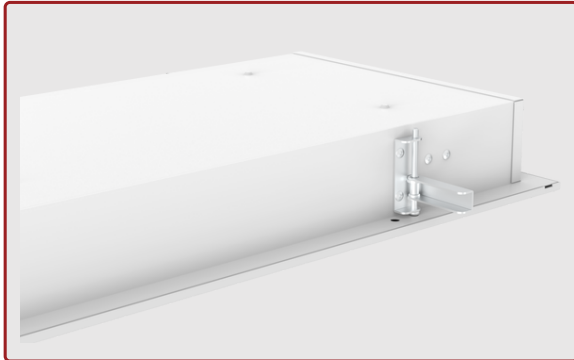
- Sealed IP65 construction with screwless trim
- 1200 x 300mm, 600 x 600mm and 600 x 300mm sizes
- CRI 90, SDCM < 3, 4000K as standard
- LED lifetime L70 >72,000 hours
- 100lm/w efficacy
- Internal driver
- Low glare LED optimised diffuser
- 90lm/w efficacy for COI models

### Available Options:

- 3000K, 3500K, Tuneable white *\*MOQ's may apply*
- DALI Dimmable
- Anti-tamper screw trim
- Toughened polycarbonate diffuser

## HIGHLIGHTS

## PLATINUM LAB



Designed to suit plaster recessed installations, the easy to use flip-out clamp brackets ensure mounting is simple and efficient.

Platinum LAB™ is available in 1200 x 300, 600 x 600mm and 600 x 300mm



**NEW 2021**

**DOWNLOAD BROCHURE**

**PLATINUM LAB**

# Model No. & Technical Specification

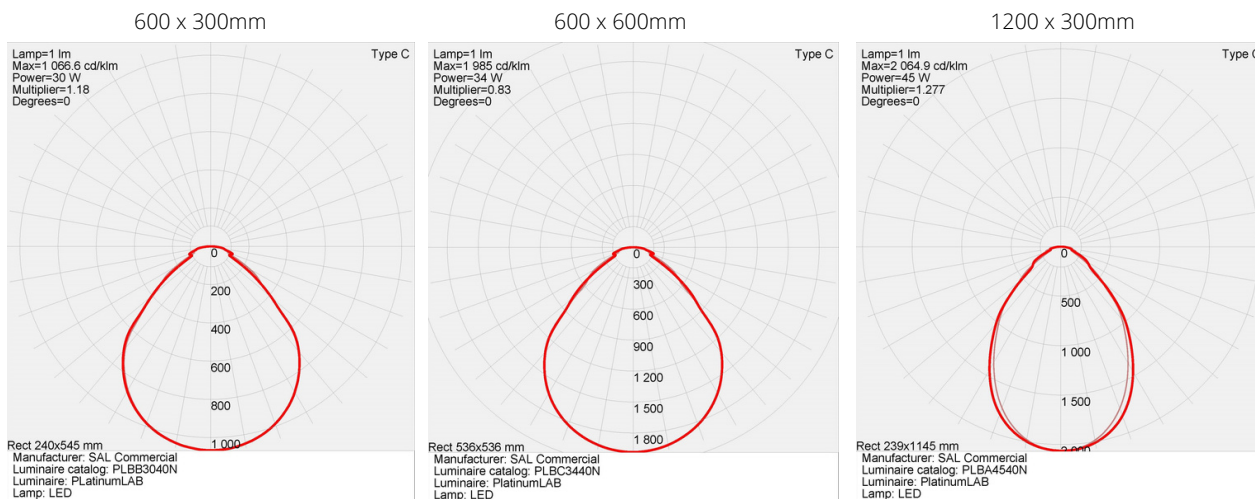
Model No.	Description	Luminous Efficacy (lm/w)	Power (W)	Lumens	CCT	CRI
PLBB3040N	Platinum LAB cleanroom, plaster recessed LED diffused troffer, 600x300mm	100	30	3000	4000	90
PLBB3040NAM	Platinum LAB cleanroom, plaster recessed LED diffused troffer, anti-microbial powder coat, 600x300mm	100	30	3000	4000	90
PLBC3440N	Platinum LAB cleanroom, plaster recessed LED diffused troffer, 600x600mm	100	34	3400	4000	90
PLBC3440NAM	Platinum LAB cleanroom, plaster recessed LED diffused troffer, anti-microbial powder coat, 600x600mm	100	34	3400	4000	90
PLBA4540N	Platinum LAB cleanroom, plaster recessed LED diffused troffer, 1200x300mm	100	45	4500	4000	90
PLBA4540NAM	Platinum LAB cleanroom, plaster recessed LED diffused troffer, anti-microbial powder coat, 1200x300mm	100	45	4500	4000	90

**Code methodology: (example P2A=1200x300mm) A=1200x300mm B=600x300mm C=600x600mm D=1500x300mm E=1200x600mm**

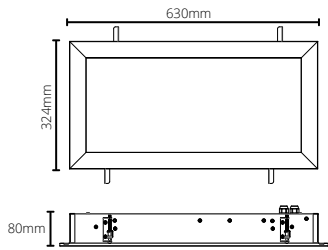
Due to continued product and technology enhancements, data source from salcommercial.net.au shall not for part of any contract or performance guarantee unless expressly confirmed in writing by SAL at the time of order. Products are sold in accordance with [SAL Commercial Terms and Conditions of sale](#) and all images shown are for illustration purposes only and may vary from the actual colour or finish.

\*\*\* Please note MOQ's will apply for Anti-Microbial Options \*\*\*

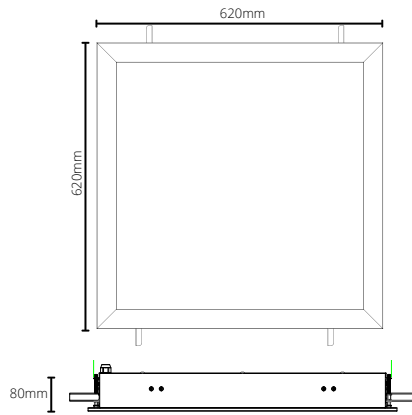
## Photometric Data



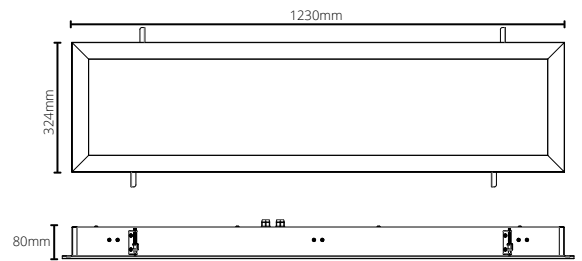
## Dimensions



Cutout: 310 x 590mm



Cutout: 605x 585mm



Cutout: 1190x 310mm

## Images

