

Stock Name: Wanhe Filtration
Stock Code: 831 389

MINING

- ▶ **Make the Mining Industry Safer by Developing Innovative and Reliable Filtration Solutions**
- ▶ **Provide the most professional filtration solutions, make a more clean world from us on!**



WANHE FILTRATION MINING

► Introduction

Dedicated to Serving the Mining Industry by Developing Innovative and Reliable Separation Solutions.

Filter plays an important role for prolonging machine life in mining industry. More clean in oil and fuel systems, the components will have longer life. Wanhe Filtration has 16 years experience in mining filtration. We can produce the filter for different industries, also we can design filter system, emulsion mixing system.

► Application

The hydraulic pump station filter and hydraulic support filter manufactured by Wanhe Filtration have been applied widely to kinds of mining machines. Automatic backwash filter purification devices, high pressure filtration station, high-pressure backwash filter station, back liquid filtration stations are used widely in mechanized mining purification system.



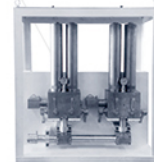
► The emulsion system solutions



Water treatment system



Emulsion tank and pump station



High pressure back flush filter station



Back flush filter

Automatic backwash filter station



Hydraulic support filter and filter element



► Filter for hydraulic pump station

► Overview

This series filter has high pressure-resistance, high flow and high dirt holding capacity. According to clients' requirement, we can customize different structure and material filter. Flange connection is adopted at outlet and inlet, convenient-maintenance and reliable-operation.

► Products

High pressure liquid inlet filter, Water tank liquid inlet filter, Oil filter, Liquid return filter, High pressure filter, Lubrication system filter, Unloading valve filter, etc.

► Technical data

- Working temp.: -20°C~60°C
- Ambient relative humidity: ≤95% (25°C)
- Working pressure: 31.5MPa
- Flow rating: 50~1000 L/min
- Filtration precision: 20μm~80μm



► Filter and filter element for hydraulic support

► Main products and technical parameters



► Main valve filter element

- Working temp.: -20°C ~ 60°C
- Ambient relative humidity: ≤95% (25°C)
- Nominal flow-rate: 4 ~ 45L/min
- Working medium: Emulsion

- Working pressure: 31.5MPa
- Filtration precision: 25μm

► Liquid inlet filter

- Working temp.: -20°C ~ 60°C
- Nominal flow-rate: 400L/min
- Working medium: Emulsion
- Filtration precision: 25μm, 40μm, 60μm, 80μm

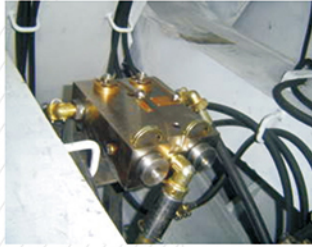
- Ambient relative humidity: ≤95% (25°C)
- Working pressure: 31.5MPa

► Spray filter and elements

- Working temp.: -20°C ~ 60°C
- Ambient relative humidity: ≤95% (25°C)
- Nominal flow-rate: 100L/min
- Working pressure: 31.5MPa
- Working medium: Water
- Filtration precision: 80μm

► Bottom valve filter

- Working temp.: -20°C ~ 60°C
- Ambient relative humidity: ≤95% (25°C)
- Nominal flow-rate: 100L/min
- Working pressure: 31.5MPa
- Working medium: Emulsion
- Filtration precision: 80μm



► Backwash filter

- Working temp.: -20°C ~ 60°C
- Ambient relative humidity: ≤95% (25°C)
- Working medium: Emulsion
- Nominal flow-rate: 900L/min
- Working pressure: 31.5MPa
- Filtration precision: 25μm, 40μm, 60μm, 80μm

► Advantages:

- High efficiency filter capacity, high flow
- High filtration precision
- Quantized the degree of pollution
- Small operating torque, backwash online
- Long lifetime
- No damage under strong pressure

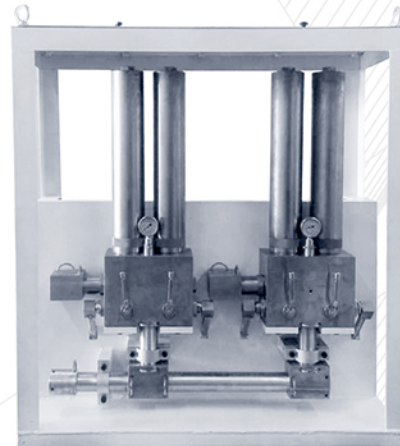
► High pressure manual backwash filter station

► Introduction

Wanhe Filtration develop the high pressure manual backwash filter station with high flow and high precision, it can realize filter backwash for many times just by operating handle.

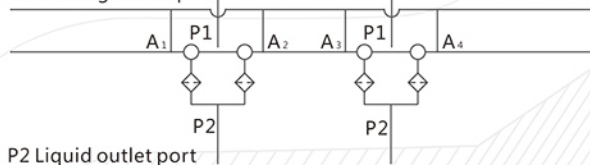
► Technical data

- Nominal flow-rate: 0 ~ 2000L/min
- Working pressure: 35MPa
- Filtration precision: 25 ~ 100μm
- Connected size: Liquid inlet DN51
- Liquid outlet: DN51
- Drain outlet: DN12.5(Can be customized by different requirements)
- **Function:** Ensure clean emulsion enter the hydraulic support, make sure hydraulic support control valve and cylinder safe and reliable operation and extend its life.
- **Advantage:** It adopts a unique structure in filter layer, more than twice filtration area compare with ordinary filter, so it can extend operating life of filter.



P1 Liquid inlet port

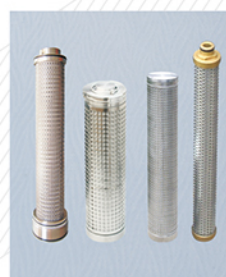
P3 Discharge outlet port



P2 Liquid outlet port

System diagram for the manually high pressure backwash filtration station

► Matched Filter element



Semi automatic backwash filter station

Overview

Semi-automatic backwash filter station is applied for mining borehole operation platform, the water from hydraulic system and the emulsion liquid which flows back from the water tank can be filtered by it, so it ensures to use clean water on working surface to protect the hydraulic system from pollution and effectively filter out the dirt from supporting system, ensuring the cleanliness of the emulsion in the tank.

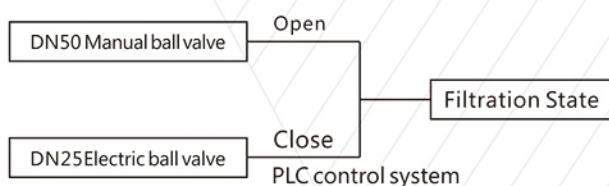


Main Parameter

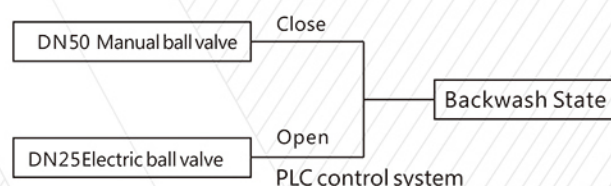
- Filter Precision : 25 μ m, 40 μ m
- Working pressure : 1.6 MPa
- Pump discharge pressure : 0.4 MPa
- Pump discharge flow-rate: 70 m³/h
- Power supply: Three phase voltage, 660V
- Control voltage: AC220V/50HZ, DC25V
- Ambient temperature: -20°C ~ 60°C
- Relative humidity: Less than 95%(25 °C)
- Working condition: Suitable for methane explosive gas in the coal mine

Working principle

Filter working condition



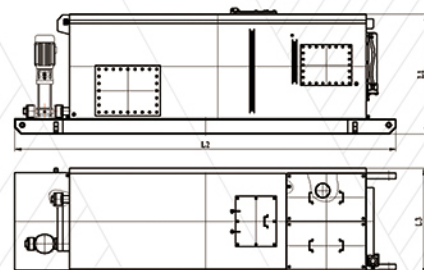
Backwash working condition



Emulsion tank Product introduction

This product is intelligent industrial system tank, it is manufactured by stainless steel, and inside frame is made of stainless steel which can ensure the structural strength of tank. Considering the characteristics of emulsion on the tank design, like steady flow, defoaming, sediment etc; they will reduce the maintenance work of tank and ensure the media cleaning.

Product	Model	Dimension			Volumen
Mixing tank	YXH7000/150	L1=1600	L2=5800	L3=1450	7000L/min
	YXH4000/150	L1=1400	L2=4700	L3=1350	4000L/min
	YXH2500/100	L1=1400	L2=3300	L3=1200	2500L/min
Liquid tank	YXF7000/150	L1=1600	L2=4800	L3=1450	7000L/min
	YXF4000/150	L1=1400	L2=3700	L3=1200	4000L/min
	YXF2500/100	L1=1400	L2=3300	L3=1200	2500L/min
Water tank	YXQ7000/100	L1=1600	L2=4800	L3=1450	7000L/min
	YXQ4000/100	L1=1400	L2=3800	L3=1200	4000L/min
Fluid liquid tank	YXG7000/100	L1=1600	L2=5800	L3=1450	7000L/min
	YXG4000/100	L1=1400	L2=3800	L3=1350	4000L/min
Liquid tank	YXP7000/50	L1=1600	L2=5130	L3=1450	7000L/min
	YXP4000/50	L1=1400	L2=3800	L3=1350	4000L/min



WANHE

FILTRATION

WANHE's Distributor in Australia, New Zealand, Southeastern Asia and India



Postal Address: PO BOX 4316, Croydon Hills, VIC 3136, Australia

Email: info@mgwtradenservice.com.au

Mobile: +61 412752033

Website: <https://mgwtradenservice.com.au/>