

Medetec Metal Detectors

Fixed Installation Industrial Detectors

The **metal detectors** are intended for fixed installations in industrial environments. The purpose is to detect metal objects in a flow of non-metallic material. The flow of material passes a search coil.

The magnetic field is affected by the presence of metal. All metals can be detected. Iron and common steel give maximum sensitivity. Copper, aluminium and stainless steel give lower sensitivity. Non-metallic objects with high iron content or good electric conductivity can also be detected.

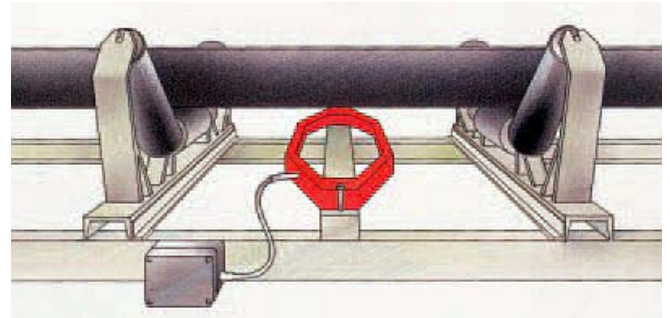
The sensitivity of the metal detector can be adjusted. When metal is detected, the relay output is deactivated. The relay may be connected to activate an alarm, send a stop impulse to the conveyor belt, send a signal to a scraping device, etc

Operating temp of search coil: -40 up to +55 °C

Operating temp of electronics units: -25 up to +55 °C

Electromagnetic compatibility: EMC Directive 89/336/EEC

Electrical safety: Low Voltage Directive 73/23/EEC



QSDM 104

A set of detector equipment consists of the following parts:

- Electronics unit.
- Search coil with data as per order specification.
- Connection box QSDM 103A.
- Signal cable.

The metal detector is fitted with automatic adjustment (AGC) of the correct working point. This ensures good performance under varying ambient conditions for a long period. The function of the metal detector is monitored by a fault-indication system.

SEARCH COILS QSDM 104

Sensitivity 2% of coil diameter:

- QSDM 104A - Common in sawmills in for ie. chippers and stone crushers. Available in sizes 400*150mm - 1365 * 558mm.
- QSDM 104F - Screened search coil for vibratory conveyors. Sizes 450 - 1400mm.
- QSDM 104R - Rectangular coil for pulp industries.



<https://kinder.com.au>

Subject to © Kinder Australia Pty Ltd
Issue: 202102

Kinder Australia Pty Ltd

26 Canterbury Road, Braeside VIC 3195
PO Box 1026, Braeside VIC 3195

☎ +61 3 8587 9111
✉ +61 3 8587 9101

✉ conveyorsolutions@kinder.com.au
ABN: 28 006 489 238

Medetec Metal Detectors

QSDM 111

A set of detector equipment consists of the following parts:

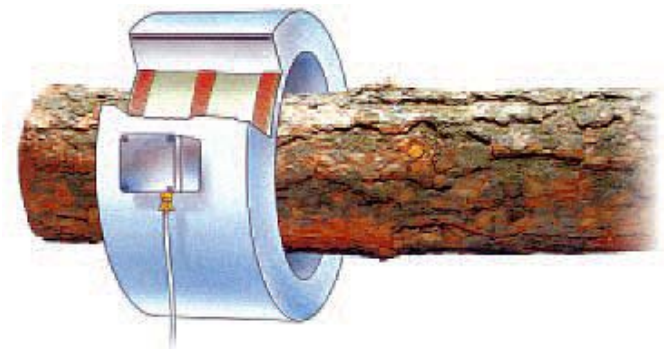
- Electronics unit QSDM 111L.
- Search coil QSDM 110S, available in different sizes.
- Signal cable.

QSDM 111 is a very sophisticated detector capable of detecting smaller items with higher accuracy and with less risk of getting false alarms. The size of the search coil determines the main operation parameters of the metal detector, such as; the sensitivity, the size of the metal free zone around the coil and the maximum conveyor speed.

SEARCH COILS QSDM 111L

Round search coils for Sensitivity 0,5% of coil diameter:

- QSDM 110S - Round search coil. Sizes inner diameter 300mm - 1400mm.
- QSDM 111S - Round search coil, inner diameter 1000mm.
- QSDM 112S - Round search coil completely insensitive to touch, inner diameter 1000mm.
- QSDM 111R - Rectangular search coils. Sizes inner diameter 1000*1000 mm - 1800*1000mm.



<https://kinder.com.au>

Subject to © Kinder Australia Pty Ltd
Issue: 202102

Kinder Australia Pty Ltd

26 Canterbury Road, Braeside VIC 3195
PO Box 1026, Braeside VIC 3195

☎ +61 3 8587 9111
📠 +61 3 8587 9101

✉ conveyorsolutions@kinder.com.au
ABN: 28 006 489 238