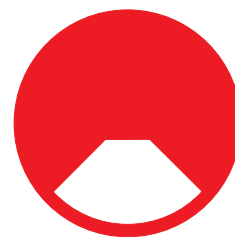


WIRE SAW

Block wire saw single or multiaxis



The WIRE SAW is manufactured in 3 different versions (stationary, gantry on rails and dual i.e. stationary + gantry). The machine has been conceived for block cutting and squaring off thick slabs of sandstone, marble and granite.

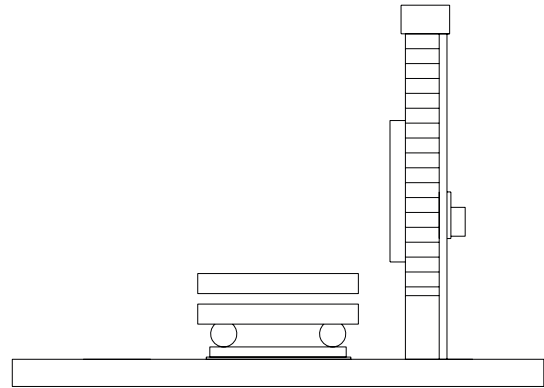
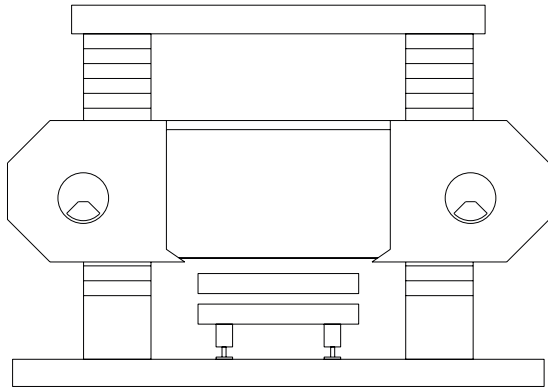
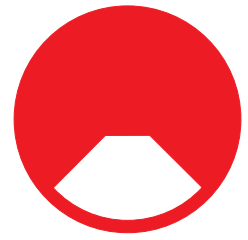
The strong steel frame has been designed to ensure very high rigidity levels and precision during all the cutting phases. It is composed of two steel columns linked together by a steady connecting beam and two aluminium large size flywheel ($\varnothing 2150\text{mm}$) reducing the diamond wire fatigue and also helping the wire spinning around its own axis, preventing its ovalization.

The two flywheels move up and down on two columns thanks to 8 linear guides, granting the absence of vibrations, and maximising stability and unmistakable precision during the cutting phases.

The driving flywheel is powered by an 18.5kW asynchronous motor and its groups are moved by a screw & nut system that is driven by a brushless motor which is controlled by a drive that adjusts the working downfeed according to the diamond wire bow.

WIRE SAW

Block wire saw single or multiaxis



TECHINICAL SPECIFICATIONS

DIMENSIONS OF INSTALLED MACHINE		METRIC		IMPERIAL	
WIDTH	9400	mm	370.1	in	
DEPTH	1100	mm	43.3	in	
HEIGHT	5550	mm	218.5	in	

FEATURES & FEEDS					
TABLE WIDTH	2000	mm	78.7	in	
TABLE DEPTH	3000	mm	118.1	in	
TABLE LOADING CAPACITY	40000	kg	88000	lb	
CUTTING LENGTH (LONG TRAVEL STROKE)	4000	mm	157.5	in	
CUTTING HEIGHT (HEAD UP AND DOWN)	2150	mm	84.6	in	
CUTTING SPEED	8-40	m/min	315-1575	in/min	
MAIN FLYWHEEL DIAMETER	2150	mm	84.6	in	
AUTOMATIC GREASING	OPTIONAL				
MANUAL GREASING	YES				
DRIVEN FLYWHEEL MOTOR POWER	18.5	kW	25	hp	
TOTAL POWER INSTALLED	22	kW	30	hp	

CONNECTIONS REQUIRED (SUPPLIED BY CUSTOMER)

POWER, WATER, COMPRESSED AIR.

*TOOLING

CONSULT YOUR LOCAL FARNESE DEALER FOR ANY TOOLING REQUIRED



www.farnese.com.au

Owing to the constant updating of our designs, descriptions and technical data shown in our drawings and folders are not binding. Possible alterations deemed by the makers as convenient will be effected at any time without previous notice.