

Nordfab Pty Ltd Dry Spray Booths

Nordfab DRY 2 m SPRAYBOOTH (2.25 m high)

Description

The Nordfab range of Dry Spray booths are constructed from bolt-together sheet metal panels. Dry paper filter media is fitted into the filter wall. The media is suitable to filter many paint and adhesive products. Spray booths are supplied complete with axial extraction fan(s).

Operating Principle

The operator positions the object to be sprayed within the confines of the booth. Fresh air is drawn in through the front opening of the booth causing the overspray to be caught in the filter. The cleaned air is discharged out through the plenum behind the filter wall and out through a discharge duct.

Filter Monitoring

The booth is supplied complete with a manometer to measure the resistance through the filter media. A set point is marked on the device indicating when the filter media needs to be replaced.

Construction

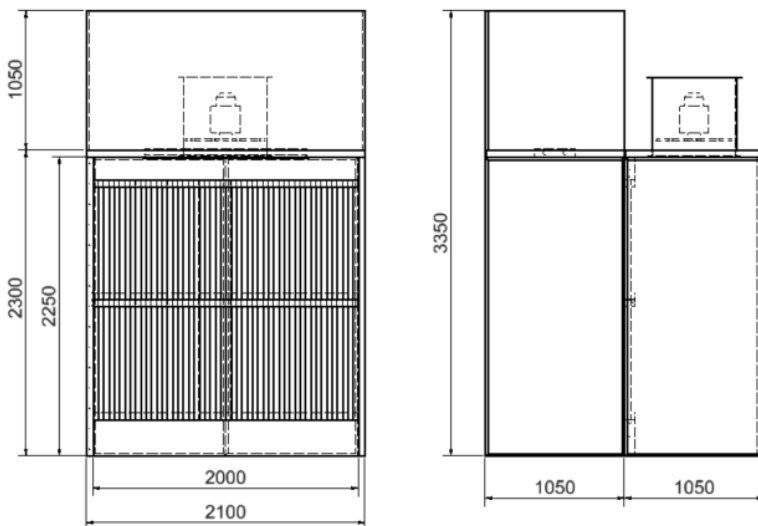
1 mm thick sheetmetal construction.

Filters

50 mm thick disposable cardboard filter media.

Applications

Spray painting (all paint types)



Model	Internal Width (mm)	External Width (mm)	Internal Height (mm)	Working Depth (mm)	Overall Depth (mm)	Airflow (L/s)	Fan Quantity	Fan Dia (mm)	Fan Motor Power (kW)	Sound Pressure (dBA @ 3 m)
SBD 2 / 2.25	2000	2100	2250	1050	2100	2250	1	560	0.75	57

Nordfab Pty Ltd *Dry Spray Booths*

Nordfab DRY 3 m SPRAYBOOTH (2.25 m high)

Description

The Nordfab range of Dry Spray booths are constructed from bolt-together sheet metal panels. Dry paper filter media is fitted into the filter wall. The media is suitable to filter many paint and adhesive products. Spray booths are supplied complete with axial extraction fan(s).

Operating Principle

The operator positions the object to be sprayed within the confines of the booth. Fresh air is drawn in through the front opening of the booth causing the overspray to be caught in the filter. The cleaned air is discharged out through the plenum behind the filter wall and out through a discharge duct.

Filter Monitoring

The booth is supplied complete with a manometer to measure the resistance through the filter media. A set point is marked on the device indicating when the filter media needs to be replaced.

Construction

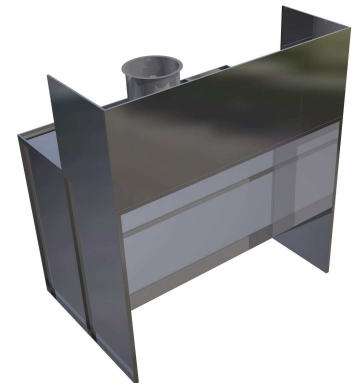
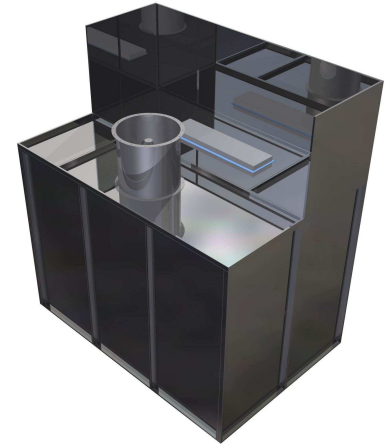
1 mm thick sheetmetal construction.

Filters

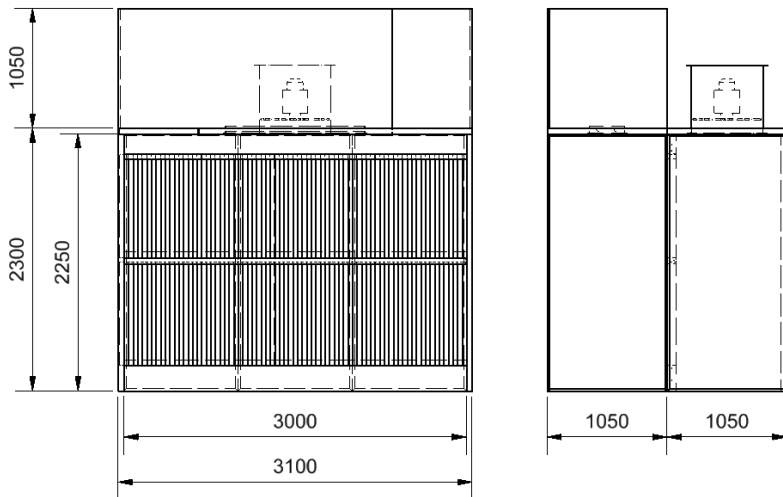
50 mm thick disposable cardboard filter media.

Applications

Spray painting (all paint types)



Adhesive spraying
Vanishing



Model	Internal Width (mm)	External Width (mm)	Internal Height (mm)	Working Depth (mm)	Overall Depth (mm)	Airflow (L/s)	Fan Quantity	Fan Dia (mm)	Fan Motor Power (kW)	Sound Pressure (dBA @ 3 m)
SBD 3 / 2.25	3000	3100	2250	1050	2100	3375	1	630	1.5	61

Nordfab Pty Ltd Dry Spray Booths

Nordfab DRY 4 m SPRAYBOOTH (2.25 m high)

Description

The Nordfab range of Dry Spray booths are constructed from bolt-together sheet metal panels. Dry paper filter media is fitted into the filter wall. The media is suitable to filter many paint and adhesive products. Spray booths are supplied complete with axial extraction fan(s).

Operating Principle

The operator positions the object to be sprayed within the confines of the booth. Fresh air is drawn in through the front opening of the booth causing the over spray to be caught in the filter. The cleaned air is discharged out through the plenum behind the filter wall and out through a discharge duct.

Filter Monitoring

The booth is supplied complete with a manometer to measure the resistance through the filter media. A set point is marked on the device indicating when the filter media needs to be replaced.

Construction

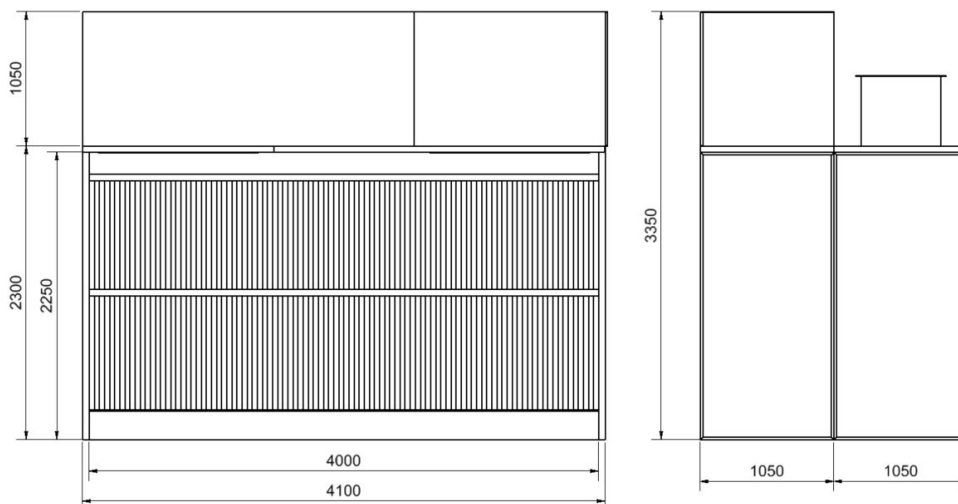
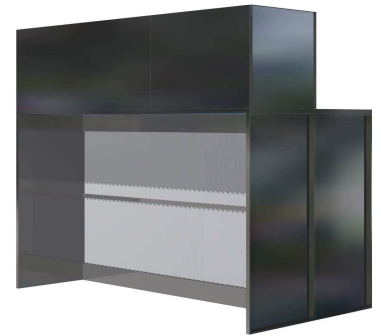
1 mm thick sheetmetal construction.

Filters

50 mm thick disposable cardboard filter media.

Applications

Spray painting (all paint types)
Adhesive spraying
Vanishing



Model	Internal Width (mm)	External Width (mm)	Internal Height (mm)	Working Depth (mm)	Overall Depth (mm)	Airflow (L/s)	Fan Quantity	Fan Dia (mm)	Fan Motor Power (kW)	Sound Pressure (dBA @ 3 m)
SBD 4 / 2.25	4000	3100	2250	1050	2100	4500	1	800	1.5	65

Nordfab Pty Ltd *Dry Spray Booths*

Nordfab DRY 5 m SPRAYBOOTH (2.25 m high)

Description

The Nordfab range of Dry Spray booths are constructed from bolt-together sheet metal panels. Dry paper filter media is fitted into the filter wall. The media is suitable to filter many paint and adhesive products. Spray booths are supplied complete with axial extraction fan(s).

Operating Principle

The operator positions the object to be sprayed within the confines of the booth. Fresh air is drawn in through the front opening of the booth causing the over spray to be caught in the filter. The cleaned air is discharged out through the plenum behind the filter wall and out through a discharge duct.

Filter Monitoring

The booth is supplied complete with a manometer to measure the resistance through the filter media. A set point is marked on the device indicating when the filter media needs to be replaced.

Construction

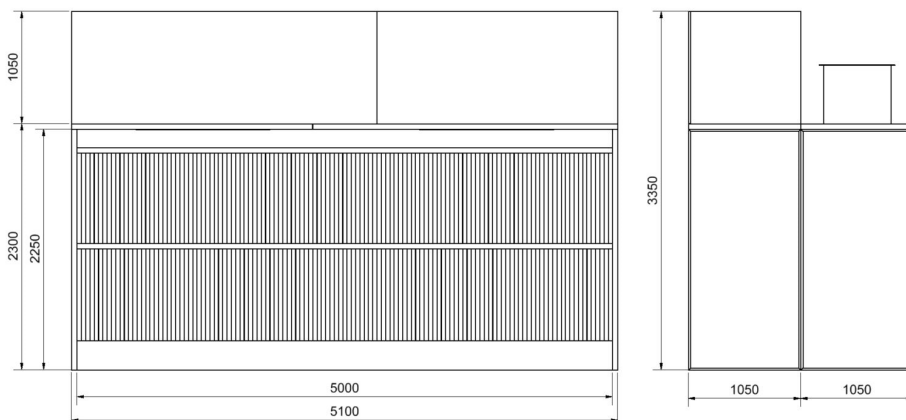
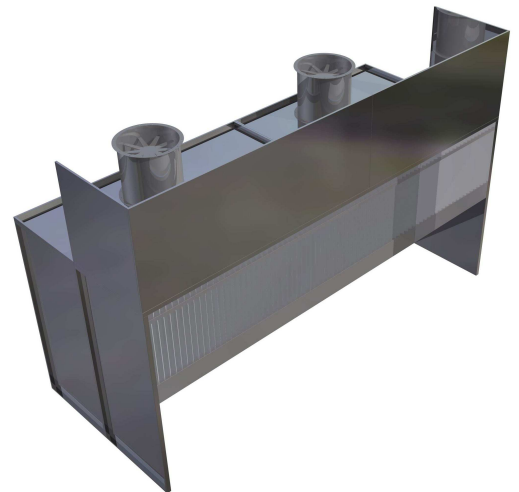
1 mm thick sheetmetal construction.

Filters

50 mm thick disposable cardboard filter media.

Electrical

All Nordfab spray booths comply with AS4114. Control panel with air pre-purge and post purge sequence. Compressed air solenoid to control compressed air supply to spraying equipment. Pressure switch for proof of airflow.



Model	Internal Width (mm)	External Width (mm)	Internal Height (mm)	Working Depth (mm)	Overall Depth (mm)	Airflow (L/s)	Fan Quantity	Fan Dia (mm)	Fan Motor Power (kW)	Sound Pressure (dBA @ 3 m)
SBD 5 / 2.25	5000	5100	2250	1050	2100	5625	2	630	1.1	61