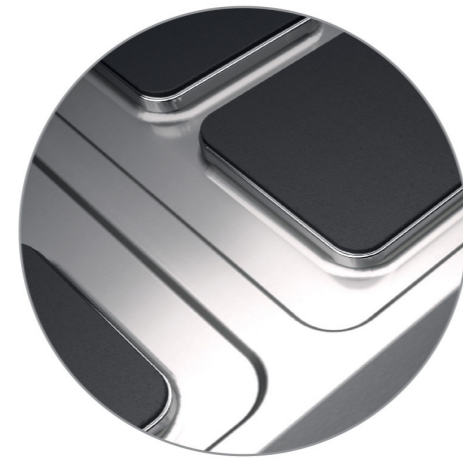


Electric Range With Cast Iron Plates

- fully moulded hob, obtained from a single large stainless steel plate;
- water tight cast iron radiant plates to avoid liquids penetrating on electric wiring;
- automatic safety thermostat to avoid plates overheating, particularly during empty functioning;
- ergonomic, recessed and tilted knobs with 6 control positions ;
- "powered plates" indicator lights;

Electric oven

- Independently adjustable stainless steel heating elements on the top and below the cooking area base plate
- thermostatic control of range temperature from 100°C to 300°C;
- "powered appliance" indicator light;
- "set temperature reached" indicating light



30x30 cm square plates secured to worktop so that they are watertight.



Temperature control provided by 7-position selector switch, whilst control panel has warning light to show that heating is on.