

# Smart Saniflush Sensor System



Scan QR code to view our installation notes



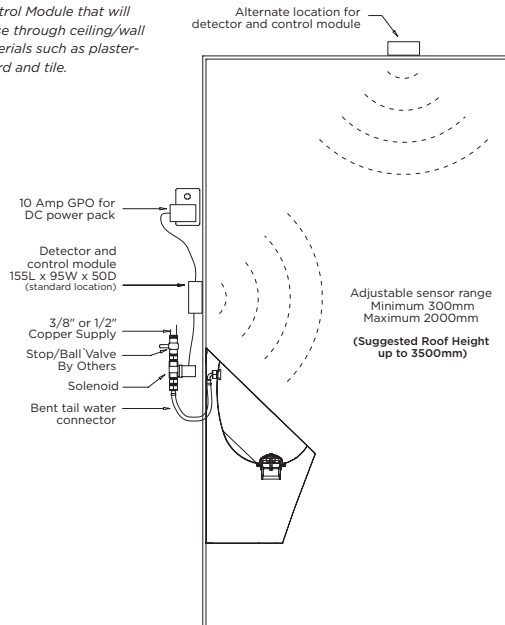
## To order this item please advise:

- FSM1 = Single solenoid (suits urinal with one water entry)
- FSM2 = Dual solenoid (suits urinal with two water entries)

## FSM includes:

Supplied with a Power Pack to supply 24vac, an air break device, a solenoid valve and a Smart Sensor (Microwave Detector)

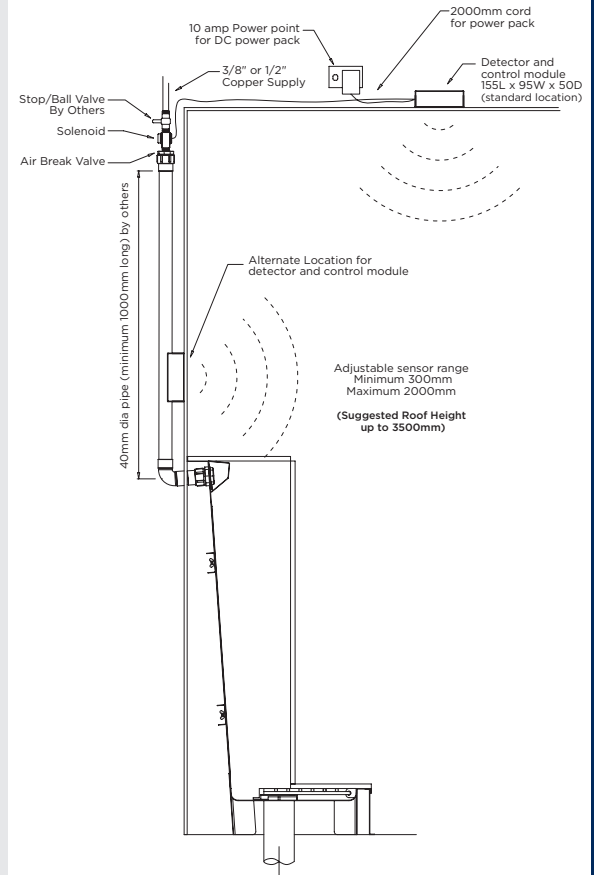
Control Module that will sense through ceiling/wall materials such as plaster-board and tile.



## FSM

### Product Info:

- Control module with 'smart' microchip for optimal water saving
- Sensor detects through most non-metallic wall/roof surfaces
- Completely concealed and vandal resistant
- Eliminates the need for regular cistern
- Adjustable sensing range & flush volume
- Suitable for all styles of urinal
- Connects to mains-water and mains-power



## INSTALLATION NOTES

- 1) Sensor module is placed directly above urinal or in rear cavity.
- 2) Sensor must not be installed behind any metallic material.
- 3) A power point is required within 2m of sensor.
- 4) Adjustment for sensing range (300mm-2000mm) and flush volume can be made by installer.
- 5) A 15mm NB copper tube or equivalent should be used to supply solenoid valve.
- 6) Sufficient water pressure & flow must be available at solenoid - ideally, 300kpa at the valve under full flow conditions (500kPa max).
- 7) Lines must be flushed before connecting water supply and a water filter is recommended to prevent debris fouling the solenoid valve.
- 8) If flushing a slab urinal, solenoid should be installed above 1m of vertical flush pipe (approx 38mm dia).
- 9) It is recommended that access be provided to the control module and solenoid valve for any future adjustments or necessary servicing requirements.