

3-WHEEL **V SERIES ELECTRIC**
FORKLIFT (Lead Acid & Li-ion battery)



Zhejiang UN Forklift Co.,Ltd.

Address: NO.1, Road One, Xindeng New District, Fuyang,
Hangzhou, Zhejiang 311404, China

Tel: +86-571-86888377/87565705/86888355/86888388

Fax: +86-571-86888399

E-mail: info@unforklift.com

Parts Inquiry: parts@unforklift.com

www.unforklift.com



CE CERTIFICATE



ISO14001:2004



ISO9001:2004

www.unforklift.com
EFFICIENT / ECONOMIC
THE UN FORKLIFT TRUCK



UN FORKLIFT

3-Wheel Electric Forklift

Capacity 1.6 ton-2.0 ton

V-Series 3-Wheel is the 2nd generation of 3-Wheel electric forklifts developed based on the N-Series. It boasts features such as a more appealing exterior, a sturdier frame, enhanced ergonomics, and superior performance.

High-efficiency and newly matched AC motors and ZAPI controllers minimize energy loss, reduce heat generation greatly and lower energy consumption. This increases the operation time by 20%.

The compact body design and pivot turning by the dual AC motors offer superior maneuverability in narrow worksites. Full AC system with ZAPI controller ensure a reliable performance.

Well known, reliable key parts and scientific design provide a great performance for material handling in a wide range of applications.

**5 YEARS
WARRANTY**

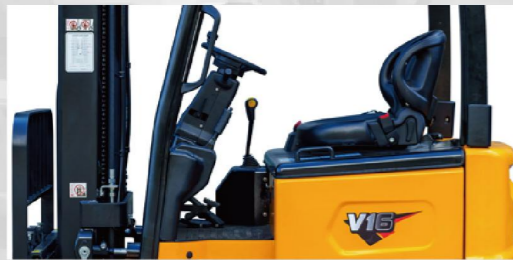
5-year battery warranty,
about 4000 times long
life cycle(LI-ION battery)



PRODUCT FEATURES



Stamped OHG features a cleaner and smoother appearance, along with increased strength.



The upgraded iron hood with exceptional strength and durability, capable of withstanding substantial impacts and pressures.



Optimized pedal position:
Optimized ergonomic accelerator position. Suspension foot brake.



Multifunctional Panel:
Adopts streamline design with super wide LED screen which can display clear contents with abundant information, and can keep operator aware of truck conditions and enhance operator's safety.

Available Options

- Two stage full free mast
- Three stage full free mast
- Widen backrest or Carriage
- Side shift
- Cabin
- Forks positioner
- Forks extensions
- Suspension seat
- Heater & Air conditioner
- OPS system
- Camera & display
- Mast top limited system
- Cold storage type
- 3rd Valve & Pipe
- 4rd Valve & Pipe
- Attachments
- Automatic water filling system (Lead Acid battery)



Side battery extraction system, the battery comes with rollers, can be pulled out easily from the right side.



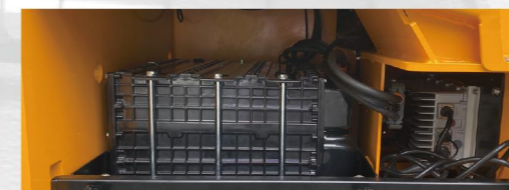
Wide view mast provides with super visibility. The panoramic mirror expands the driver's view when backing up.



Dual rear tires achieve stability during traveling and turning. It can also automatically control the turning speed according to the turning angle.



A hand brake with a self-locking function can prevent rollaway accidents, reduce operator fatigue, decrease brake wear, and improve compliance and safety.



3rd-generation battery, with IP67 waterproof & dustproof.



Outstanding tight-turn performance for effective warehouse operations. Smooth entry and exit for containers or low-height entranceways.

1.6-2.0 TON 3-WHEEL ELECTRIC FORKLIFT MAIN SPECIFICATIONS

MAIN SPECIFICATIONS							
Specification	1	Manufacturer	UN	UN	UN		
	2	Model	FBT16	FBT18	FBT20		
	3	Rated Load Capacity	Q(kg)	1600	1800	2000	
	4	Load Centre	C(mm)	500	500	500	
	5	Lift Height	H3(mm)	3000	3000	3000	
	6	Free Lift	H2(mm)	118	118	118	
	7	Fork Size(L/W/T)	(mm)	920x100x35	920x100x35	1070x100x40	
	8	F/B(a°/B°)	Deg	6°/6°	6°/6°	6°/6°	
Dimensions	9	Length(To Fork Face)	L1(mm)	2036	2036	2136	
	10	Width	B1(mm)	1045	1045	1160	
	11	Mast Lowered Height	H1(mm)	2085	2085	2085	
	12	Mast Extended Height(With Backrest)	H4(mm)	4070	4070	4070	
	13	Overhead Guard Height	H5(mm)	2085	2085	2085	
	14	Turning Radius	Wa(mm)	1615	1615	1702	
	15	Fork Overhang(Wheel Center to Fork Face)	X(mm)	408	408	415	
	16	Front Tread	B2(mm)	977	977	960	
	17	Rear Tread	B3(mm)	180	180	180	
	18	Ground Clearance	H6(mm)	105	105	105	
	19	Wheelbase	Y(mm)	1420	1420	1520	
	20	Fork Spread(Min/Max)	(mm)	240/1030	240/1030	240/1030	
	21	Working Aisle Width With Pallet (1000x1200,1200 Lengthways)	Ast (mm)	3290	3290	3325	
	22	Working Aisle Width With Pallet (800x1200,800 Lengthways)	Ast (mm)	3410	3410	3525	
Performance	23	Travel Speed (Full Load)	km/h	13	13	13	
	24	Travel Speed (No Load)	km/h	14	14	14	
	25	Lifting Speed (Full Load)		290	290	290	
	26	Lifting Speed (No Load)	mm/s	340	340	340	
	27	Max. Gradeability (Full Load)	%	15	15	15	
	28	Total Weight (Contains the battery)	kg	3345	3525	3675	
	29	Tyre (Frontx2)		18X7-8	18X7-8	200/50-10	
	30	Tyre (Rearx2)		15X4.5-8	15X4.5-8	15X4.5-8	
	Drive	31	Driver Motor	kw	4.8X2	4.8X2	4.8X2
		32	Pump Motor	kw	10	10	10
33		Standard Lead Acid Battery	V/Ah	48/460	48/460	48/540	
		Standard Lithium-ion Battery	V/Ah	48/300	48/300	48/300	
34		Controller Type		AC	AC	AC	
35		Controller Manufacturer		ZAPI	ZAPI	ZAPI	
36	Operating Pressure	Mpa	19.5	19.5	19.5		

MAST SPECIFICATIONS & RATED CAPACITIES

MAST SPECIFICATIONS & RATED CAPACITIES														
Mast Type	Mast Name	Max. Fork Height (mm)	Load Capacity (kg)			Overall Height (mm)			Free Lift (mm)		Tilt Angle	Total Weight (kg)		
						Lowered	Extended		Without Backrest	With Bracket				
			Without Backrest	With Backrest	Without Backrest		With Bracket							
			FBT16	FBT18	FBT20	1.6t/1.8t/2.0t		1.6t/1.8t/2.0t		1.6t		1.8t	2.0t	
Wide View Mast	SM200	2000	1600	1800	2000	1585	2645	3170	135	135	6-6	3275	3450	3605
	SM250	2500	1600	1800	2000	1835	3045	3570	135	135	6-6	3310	3490	3640
	SM270	2700	1600	1800	2000	1935	3245	3770	135	135	6-6	3325	3505	3655
	SM300	3000	1600	1800	2000	2085	3545	4070	135	135	6-6	3345	3525	3675
	SM330	3300	1600	1800	2000	2235	3845	4370	135	135	6-6	3365	3545	3695
	SM350	3500	1600	1800	2000	2335	4045	4570	135	135	6-6	3380	3560	3710
	SM370	3700	1600	1800	2000	2435	4245	4770	135	135	6-6	3295	3475	3625
	SM400	4000	1600	1800	2000	2635	4545	5070	135	135	3-5	3450	3625	3780
	SM430	4300	1500	1700	1900	2785	4845	5370	135	135	3-5	3470	3650	3800
	SM450	4500	1400	1600	1800	2885	5045	5570	135	135	3-5	3485	3665	3815
	SM470	4700	1250	1500	1700	2985	5245	5770	135	135	3-5	3500	3675	3830
	SM500	5000	1100	1300	1400	3185	5545	6070	135	135	3-5	3555	3730	3885
SM550	5500	950	1100	1200	3435	6045	6570	135	135	3-5	3590	3770	3920	
SM600	6000	750	900	1000	3685	6545	7070	135	135	3-5	3625	3805	3955	
3-Stage Full Free Wide View Mast	STFM400	4000	1600	1800	2000	1935	4545	5070	1300	875	3-5	3505	3685	3835
	STFM430	4300	1500	1700	1900	2035	4845	5370	1400	975	3-5	3530	3705	3860
	STFM450	4500	1400	1600	1800	2085	5045	5570	1500	1025	3-5	3545	3720	3875
	STFM480	4800	1280	1480	1530	2185	5295	5820	1650	1125	3-5	3560	3740	3890
	STFM480	4800	1285	1485	1535	2185	5345	5870	1600	1125	3-5	-210	-210	-210
	STFM500	5000	1250	1450	1500	2235	5545	6070	1700	1175	3-5	3575	3755	3905
	STFM550	5500	1150	1200	1300	2435	6045	6570	1800	1375	3-5	3615	3795	3945
	STFM600	6000	1050	1100	1200	2635	6545	7070	2000	1575	3-5	3690	3870	4020

With side shifter, load capacity subtract 150Kg.

