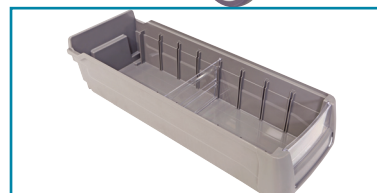


## Parts Bin Trolley

- PVC mat on top and bottom tray
- Transparent front window on the parts bin
- Each bin comes with one divider and one bin label card
- Parts trays have a raised back lip
- Plastic Parts Bin size (LxWxH): 450x165x105mm
- 265mm distance between bottom and middle shelf on V7226 model
- 400kg load capacity
- Rubber Castors – 2 x fixed, 2 x swivel with brakes



Code	Details	Castors (mm)	Distance Between Shelves (mm)	Tray Size (mm)	Overall Size LxWxH (mm)	Unit Weight (kg)
V7226	Parts Bin Trolley (8 parts bins)	100	110	755x465	850x500x855	34
V7227	Parts Bin Trolley (16 parts bins)	100	110	755x465	850x500x855	38

Visit [www.verdex.com.au](http://www.verdex.com.au) for more images and details

## ABOUT VERDEX EQUIPMENT

At Verdex Equipment we have the largest range of manual handling and workplace materials handling equipment in Australia. This includes thousands of workplace and storage items suited to every workplace and lifting equipment and trolleys for almost every application. Our products aim to eliminate or reduce manual handling effort in the workplace, while boosting productivity and ensuring workplace safety.

VERDEX has over many years spent countless hours on product development and sourcing to ensure we can get products to make your workplace not only safer but more efficient.

VERDEX sources products from all over the world and sells them direct meaning there is no middle man or middle margin added giving you the best possible price and faster service. We strive to ensure you have the perfect product to improve the safety and efficiency of your workplace.

VERDEX is dedicated to providing you with the highest quality workplace products at the best possible price, with the best possible service. With a long and trusted reputation in the industry, VERDEX is a name and company you can rely on.