

Eliminate Drug and Alcohol Abuse at your Workplace with Pathtech



Pathtech Workplace Drug Detection Range

September 2024 version

Contact the Pathtech team
Phone 1800 069 161 | Email drugwipe@pathtech.com.au
pathtech.com.au/products/drug-alcohol-testing/



Pathtech[™]
First Choice In Science

Up to 15%

of workplace injuries worldwide are attributable to drug and alcohol use



Around 60%

of individuals who consume drugs and alcohol at harmful levels are in full time employment



Alcohol and other drugs cost Australian workplaces an estimated

\$6 billion

per year in lost productivity



Half of Australian workers drink at harmful levels,

13%

 use cannabis

4%

 use amphetamines


1 in 10

workers says they have experienced the negative effects associated with a co-worker's misuse of alcohol



Under the duty of care provisions in the OH&S Act, Employers must provide a safe workplace for their employees. One of the most effective ways that employers can deal with potential drug and alcohol abuse and protect their employees is to develop and implement a workplace drug and alcohol policy.

Pathtech can help

Pathtech empowers employers to identify and eliminate the use of drugs and alcohol in the workplace by offering the very best detection devices available in the market. **This includes Australia's number 1 selling saliva screening device, the Securetec DrugWipe®**, which Pathtech supply to the Australian Police jurisdiction for random roadside drug screening ("Drug Buses"). Our expansive and high quality range also includes the Securetec Surface Testing DrugWipes, the Securetec WipeAlyser, and Urine Test Cups.

Our devices can be used as part of an internal "in-house" testing program, or alternatively, provided for use by an existing testing provider.

The Pathtech Team will work closely with you to identify which device best suits your requirements. Our team of dedicated experts will assess your business and make a considered and informed recommendation. We then provide detailed product training, and continued after sales support.

With existing clients that include government departments, mining, manufacturing, building, construction and customs, you can be confident in Pathtech's experience and dedication to providing the very best devices to create safe, drug and alcohol free workplaces.

The Pathtech Device Range

Pathtech are able to supply saliva or urine based drug detection screening devices and breath alcohol breathalysers. Each device has unique benefits, which are featured in the table below:

Method	Collection	Device	Detection Time	Drugs / Alcohol Detected	Key Benefits
Saliva	Involves collection of a sample of saliva from inside the mouth using a swab or similar	Securetec DrugWipe (page 6)	5 minutes	Amphetamines / Methamphetamines, Cannabis (THC), Cocaine, Opiates, Benzodiazepines (6S only) and Ketamine (6S Ketamine only)	<ul style="list-style-type: none"> As used by the Australian Police for roadside drug screening Requires only a small amount of saliva (wipe down tongue) Ease of sample collection Overall reliability greater than 95% Ability to detect even small doses of cannabis WipeAlyser device also available to analyze results from DrugWipe
Urine	Involves the employee producing a urine sample into a sterile tamper proof container	Urine Test Cups (page 8)	2 minutes	Amphetamines / Methamphetamines, Cannabis (THC), Cocaine, Opiates or Morphine & Benzodiazepines 14 panel cup: Cannabis (THC), Cocaine, Amphetamine, Methamphetamine, Benzodiazepines, Buprenorphine, Methadone, Oxycodone, Phencyclidine, Morphine, Ecstasy, Ketamine, K2 Synthetic Cannabinoid and Fentanyl	<ul style="list-style-type: none"> Simple and easy to use. Single step Build in specimen validity test to defeat specimen adulteration
Surface	Involves using a swab to wipe a surface	Securetec DrugWipe (page 9)	8 minutes	Amphetamines / Methamphetamines, Cannabis (THC), Cocaine & Opiates	<ul style="list-style-type: none"> Trace detection on all surfaces

The Pathtech Drug Detection Team will work closely with you to determine the very best detection device or devices based on the requirements of your workplace.

1. Australian Drug Foundation. Drug Info- Alcohol and Drugs in the Workplace.
2. Guidelines for Drugs, Alcohol and The Workplace. WorkCover Corporation of South Australia.

Saliva versus Urine? Which is best for your Workplace?

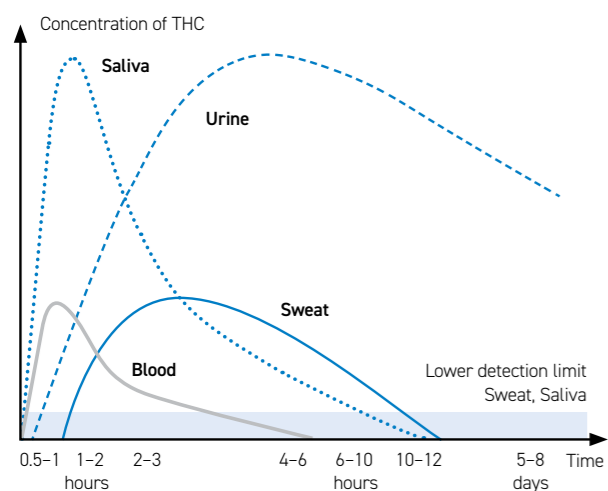
A guide to the development of a workplace drug and alcohol testing program

	Saliva	Urine
Drugs that can be detected	<ul style="list-style-type: none"> Amphetamines / Methamphetamines, Cannabis (THC), Cocaine, Opiates & 6S only Benzodiazepines 	<ul style="list-style-type: none"> Cannabis (THC), Cocaine, Amphetamine, Methamphetamine, Benzodiazepines, Buprenorphine, Methadone, Oxycodone, Phencyclidine, Morphine, Ecstasy, Ketamine, K2 Synthetic Cannabinoid and Fentanyl
Detection time-frames	<ul style="list-style-type: none"> Detects recent drug use - up to 24 hours Provides a result in 5 minutes 	<ul style="list-style-type: none"> Detects drugs taken in the last 1-5 days Provides results in 1-2minutes
Testing procedure	<ul style="list-style-type: none"> Requires a wipe down the tongue - only small volume of saliva is required Least invasive test method 	<ul style="list-style-type: none"> Involves the employee producing a urine sample into a sterile tamper proof container
Ease of sample collection	<ul style="list-style-type: none"> Samples are easily collected. Very little chance of sample adulteration 	<ul style="list-style-type: none"> As per Australian Standards - sample collection must be witnessed
Applications	<ul style="list-style-type: none"> Random, reasonable cause, post accident and post rehabilitation testing Provides an indication of recent drug use or whether "fit for work" 	<ul style="list-style-type: none"> Pre employment, random, reasonable cause, post incident and post rehabilitation testing Provides a history of drug use

Testing Methods:

Time windows for detection of Cannabis / THC

Subject to the moment of testing after the consumption



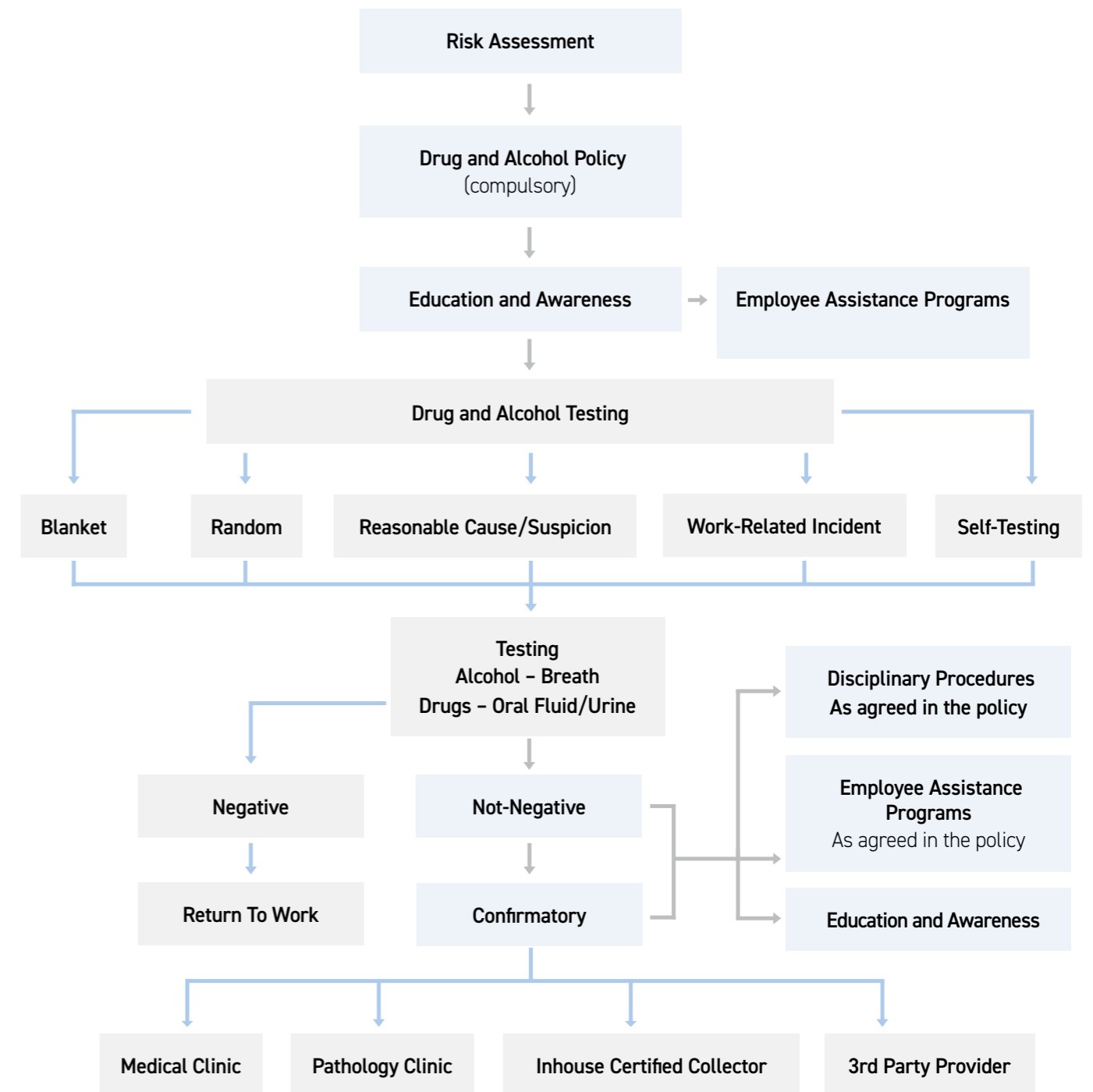
Test results	0.5-1 hrs	1-2 hrs	2-3 hrs	4-6 hrs	6-10 hrs	10-12 hrs	5-8 days
Saliva	+	+	+	+	-	-	-
Sweat	-	+	+	+	+	+	-
Urine	-	+	+	+	+	+	+
Blood	+	+	+	-	-	-	-

These results are guidelines which can vary depending on individual constitution, quality, frequency and intensity of consumption.

Drug Class	Saliva	Urine
Methamphetamines/Amphetamines Ice, Ecstasy, Speed, MDMA	Up to 1 - 2 days	Up to 1- 4 days
Cocaine	Up to 1 - 2 days	Up to 1 - 4 days
Opiate Heroin, Morphine, Codeine	Up to 1 day	Up to 1 - 2 days
Benzodiazepines Anti-Anxiety Medication (Valium, Xanax, Diazepam)	Up to 1 day	Up to 2 - 4 days
Cannabis Marijuana/THC	Up to 6 - 12 hours	Up to 5 - 50 days

The Pathtech Team recommends saliva based devices as a preferred method to detect potential drug abuse at your workplace.

- Saliva drug testing can detect drugs anytime, from immediately after the most recent use to up to 24 hours after use. By comparison, urine cannot accurately determine if drug use was recent or days prior, therefore making saliva superior for post-incident testing.
- Saliva testing is easier and not prone to adulteration. The collection procedure is also less invasive than other forms of drug testing.



Saliva Drug Testing



The Securetec DrugWipe Saliva Drug test is intended to be used for the preliminary detection of drugs in human saliva by trained professionals. Workplaces across Australia are using the Securetec DrugWipe® S device to detect the presence of drugs in saliva as part of their OH&S procedures.

The DrugWipe® S is currently used by Australian Police jurisdictions throughout Australia for roadside and is an easy to use rapid, efficient, and reliable test for the detection of drugs in saliva.

The DrugWipe® is an immunological rapid lateral flow screening test with results available in 5 minutes.

- › No handling of saliva required.
- › Fast—results within 5 minutes.
- › No instrument is required—visual reading only.
- › Suitable for testing post incident, blanket, random or on suspicion



DrugWipe 5S - 5 Minute Test

Product Code: 173-S505G.36

For the detection of Amphetamines / Methamphetamines, Cannabis THC, Cocaine and Opiates



DrugWipe 6S - 5 Minute Test

Product Code: 173-S604G.36

For the detection of Amphetamines / Methamphetamines, Cannabis THC, Cocaine, Opiates and Benzodiazepines

Confirmatory Testing

Oral Fluid Collection Pack

Product Code: 220.PAT102C.PACK

These kits are used for the collection and transportation of a saliva specimen to the laboratory for confirmatory analysis. Included in the kit:

- › 2x Buffer Tubes
- › 2x Collections Pads
- › Instructions for use

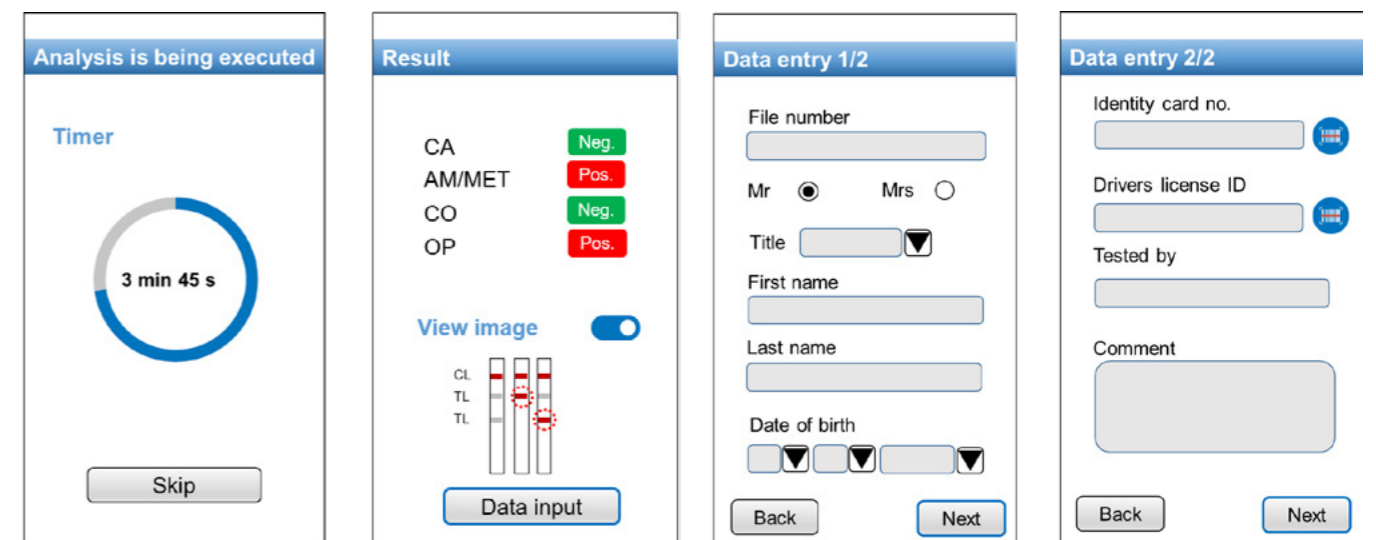


WipeAlyser Analysis Device

The WipeAlyser is a handheld portable analysis device for detecting drugs when used in combination with the DrugWipe, providing an ideal drug screening tool for your workplace.

Key features:

- › Robust design suitable for both indoor and outdoor use – with shock and splash proof protection
- › Hand-held and ergonomic – weight 800grams
- › Long battery life
- › Vivid touch screen
- › Integrated printer for quick documentation
- › Doesn't require a computer/laptop – completely mobile
- › Intuitive operation to guide you through the analysis and interpretation of results, see example below:



Urine Drug Testing



Surface Drug Testing



Eco Cup II 6 Panel

Product Code: 028-ECOCUP11-6P

Assists in the detection of a full range of substances including Amphetamines / Methamphetamines, Cannabis (THC), Cocaine, Opiates & Benzodiazepines.

- › Easy to use - one step
- › Urine Samples with cut-offs complying to AS4308:2008 Standards
- › Fast urine test, results typically ready in 1-2 minutes.
- › Built-in extraction ports



InnoScreen 6 Panel Urine Tilt Test Cup

Product Code: 028-Inno6cupAU

Assists in the detection of a full range of substances including Amphetamines / Methamphetamines, Cannabis (THC), Cocaine, Morphine & Benzodiazepines.

- › Simple and easy to use. Collect the sample and replace the lid
- › Provides results in 2 minutes
- › Built in specimen validity to detect specimen adulteration
- › Certified to Australian Standards (AS4308:2008)



Eco Cup II 7 Panel with K2

Product Code: 028-ECOK2-20

Assists in the detection of a full range of substances including Amphetamines / Methamphetamines, Cannabis (THC), Cocaine, Opiates & Benzodiazepines and K2/Spice.

- › Easy to use - one step
- › Fast urine test, results typically ready in 1-2 minutes.
- › Built-in extraction ports make sending a specimen to the laboratory easier and cleaner
- › Cost effective



Eco Cup II 14 Panel

Product Code: 028-ECOCUPII-14PATH

Assists in the detection of a full range of substances including Amphetamines / Methamphetamines, Cannabis (THC), Cocaine, Opiates, Benzodiazepines, K2/Spice, Ecstasy, Oxycodone, Ketamine, Buprenorphine, Methadone, Phencyclidine and Fentanyl.

- › Easy to use - one step
- › Fast urine test, results typically ready in 1-2 minutes
- › Cost effective

The Securetec DrugWipe 1A and 5F Surface Testing Devices can detect the presence of illegal substances on surfaces, making them an ideal screening tool for residential and commercial properties, workplaces, vehicles and more.

DrugWipe 1A

For surface detection of Amphetamines, Methamphetamines and Ecstasy.

- › Easy to use
- › Provides a visible, qualitative result within 8 minutes
- › Accurate
- › Ideal for meth testing of properties, cars and workplaces



DrugWipe 1A
Product Code: 173-A104A

DrugWipe 5F

For surface detection of Cannabis, Opiates, Cocaine, Amphetamines, Methamphetamines and Ecstasy

- › Provides a visible, qualitative result within 8 minutes
- › Currently used by Australian Customs



DrugWipe 5F
Product Code: 173-F501A

Property Screening Pack

Designed to help detect the presence of Methamphetamines (Ice) in residential properties, the Property Screening Pack is available with x 5 or x 10 DrugWipe 1A Surface Testing devices and includes:

- › Pathtech Cooler Bag (Fits your DrugWipes, Accessories and Paperwork)
- › Quick Reference Training Guide
- › 2 x pairs of Nitrile Gloves
- › x 2 or x 3 Underpads
- › x 5 or x 10 Carboard Cut-Outs (10cm x 10cm)



Property Screening Pack
Product Codes: 220-PSP1A (5-Pack) 220-PSP1A-10 (10-Pack)

FAQ's

1. Are Pathtech able to conduct the testing at my workplace or organisation?

Pathtech are a supplier of drug and alcohol testing devices and are not able to physically conduct the testing at your workplace or organisation. We do nonetheless, have relationships with a range of testing providers right across Australia who test using products from the Pathtech range and therefore, we can put you in contact with the best testing provider for your workplace or organisation.

2. How will I know how to use the testing devices correctly?

If you are planning on conducting your drug and alcohol testing directly, Pathtech will provide you with full product training to ensure you know how to use your devices correctly. This training can be undertaken online through our training portal or alternatively can be conducted via a phone conference or face to face if required. Following your training, you will be provided with a certificate of completion for your records. The Pathtech Drug Detection Team can also assist with any after support as required.

3. Can a donor eat or drink before taking the test?

No. Ensure that they do not eat, drink, smoke or chew anything at least 10 minutes before doing the test

4. Can Pathtech assist if I am wanting to engage a testing provider rather than test directly?

Certainly. Pathtech have a relationship with a range of testing providers right across Australia who test using products from the Pathtech range and can put you in contact with the best testing provider for your workplace or organisation.

5. I already use a testing provider. Are Pathtech able to supply testing devices to them?

Pathtech currently supply drug and alcohol testing devices to a large number of Testing Providers across Australia. If your Provider does not currently use Pathtech products, please encourage them to contact Pathtech to see how they can purchase devices. Alternatively, Pathtech are able to sell to your workplace or organisation directly.

6. Who should I contact if there is an issue with a purchased testing device?

In the very unlikely event that there is an issue with a testing device purchased from Pathtech, please contact the Pathtech Drug Detection Team who will work with you to identify and best rectify the issue.

7. Do any of your testing devices have an expiry?

The Securetec DrugWipes have up to a 24-month expiry, whilst our Urine Cups have up to an 18-month expiry. There is no expiry on the Intoximeter Breathalysers.

8. How many DrugWipes are in a box?

25

9. How many people should I test if I was performing random tests?

Approximately 10% of your workforce once per month is the industry standard. Testing smaller amounts on different days, at different times and on different shifts is more effective than testing a large amount less frequently.

10. Do Pathtech provide posters and reference material to place around the site and in staff common areas?

Instructional and Awareness posters are available in various sizes to enable communication

11. How long will I need to wait to receive any order placed for testing devices?

The Pathtech warehouse is based in Melbourne, Australia, enabling quick dispatch of orders. Orders are usually shipped within 24 hours of an order confirmation being received, and should arrive to site within 1-3 working days dependent upon your location within Australia.

12. How often do the Intoximeter Breathalysers need to be calibrated?

Breathalysers need to be calibrated every 6 months, regardless of the number of tests conducted within this period, as per the Australian Standards. Pathtech's Service Laboratory is able to perform this calibration. Contact your Account Manager to find out how to book your breathalyser in for calibration

13. Can the DrugWipe be used to conduct testing on site?

The DrugWipe is ideal for on-site "on the spot" testing within most external environments due to it requiring minimal saliva, its efficiency, size and portability.

14. Do your urine cups have adulterants?

Yes - both the 6, 7 and 13 panel Urine Drug Cups have adulterant screening plus temperature.

15. How do I store the DrugWipes?

Incorrect storage conditions, such as high temperatures, will damage the test. Avoid temperatures in excess of 40 °C. Damage to the test may occur.

- ▶ 5 - 40 °C - Use DrugWipe within this temperature range.
- ▶ 5 - 25 °C - Only store DrugWipes within this temperature range.

16. What do I do if I get a not-negative result?

Upon receipt of a not-negative result from any saliva or urine screening device, a secondary or confirmatory test must be performed (as per Australian Standards). We offer a Confirmatory Saliva Collection Kit or alternatively the test can be performed by health care professional at a Pathology Clinic or Medical Centre. Please contact the Pathtech Drug Detection Team for advice.

17. Do I need accredited training to become a Drug and Alcohol tester for a pre-screen only?

Pathtech offer end to end training (non-accredited) on how to use the DrugWipe to conduct a saliva drug test. A certificate of competency will be issued upon successful completion. If you would like to take the specimen collectors course, we can provide some recommendations for registered training organisations that offer this course. We also offer training on our other products, such as: Breathalyser and Urine.

18. What will and won't show up on a drug test?

Common prescription / over the counter medication **will show**: Codeine, Pholcodine (cough syrups), Benzodiazepines (valium, lorazepam), Dextroamphetamine (Adderall), Sudafed, Duromine (weight loss)

Common prescription/over the counter medication that **won't show**: Ibuprofen, Paracetamol (Panadol), Antihistamines, Diabetic medication, Heart medication, Cholesterol tablets, Contraceptive pills, Anti-Depressants, Methylphenidate (Ritalin)

For further information on our extensive range of saliva testing, urine testing, alcohol testing and surface testing, visit www.pathtech.com.au or call our team on 1800 069 161.



Extensive Industry Experience

Pathtech are Australia's largest supplier of Drug Detection Devices and have extensive experience working across a range of Industries and Business types to support their drug and alcohol testing including:

- › Police
- › Mining
- › Engineering
- › Manufacturing
- › Transport
- › Corrective Services
- › Healthcare
- › Aviation
- › Energy
- › Oil and Gas
- › Sugar, Pulp and Paper Mills
- › Abattoirs
- › Wind Farms and Power Stations
- › Construction
- › Local Government and Councils
- › Customs and Border Force
- › Real Estate and Property Management
- › Housing Departments and Organizations
- › Safety Supply Companies
- › Drug and Alcohol Testing Services

Contact the Pathtech team
Phone 1800 069 161 | Email drugwipe@pathtech.com.au
pathtech.com.au/products/drug-alcohol-testing/