

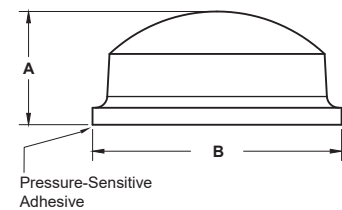
## Self-Adhesive Bumpers (page 1 of 3)

- 100% molded polyurethane
- Easy "Peel-Off" application, non-staining, non-skidding, and non-marring
- Superior abrasion resistance, vibration and shock dampening
- Superb coefficient of friction and resistance to skidding, crack-resistant and resilient
- UL recognized components, RoHS and WEEE compliant

Popular items are listed below but many more varieties are available.  
Contact us if you need a Bumper that is not listed here (+61 8 8268-2733).

### HEMISPHERICAL

Rounded dome shaped bumper feet that absorb impact and are ideal for preventing your application from skidding. This group of rubber feet includes several of our smallest parts.



The exact shape of each part can vary. Please contact NPA for data sheets of specific items.

#### Colours:

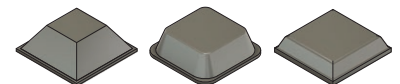
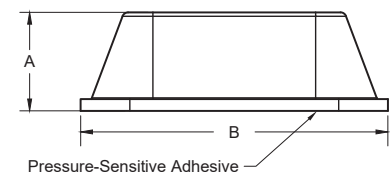
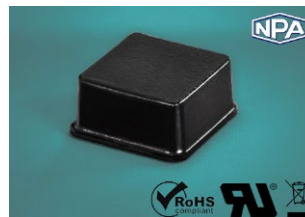
Clear is standard for all parts. Additional colours are black (B), white (W), brown (BR) and grey (G).

When ordering a non-clear part, add the colour abbreviation as a suffix to the part number eg. "17001B" for a black part.

PART NO.	COLOURS	PART DIMENSIONS (mm)		PIECES PER PAD
		HEIGHT (A)	DIAMETER (B)	
17001	B, W, BR, G	5.1	11.1	242
17002	B, W	2.2	8.5	450
17003	B, W, BR, G	9.7	17.8	98
17004	B, W, G	3.8	9.5	200
17005	B, W, G	7.9	15.7	128
17006	B	5.4	9.5	300
17007	B, W	2.2	7.9	450
17008	B	1.9	19.1	84
17019	B, W	1.6	6.4	578

### SQUARE

Commonly used on the bottom of larger appliances and on electronics as spacers. Square feet provide the largest surface area of any bumper profile, which helps for heavier load bearing applications. These feet are utilized on electronics and fit perfectly into molded cavities on the bottom of devices.



The exact shape of each part can vary. Please contact NPA for data sheets of specific items.

#### Colours:

Clear is standard for all parts. Additional colours are black (B), white (W), brown (BR) and grey (G).

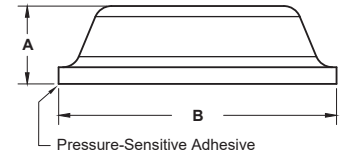
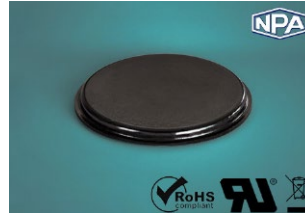
When ordering a non-clear part, add the colour abbreviation as a suffix to the part number eg. "17020B" for a black part.

PART NO.	COLOURS	PART DIMENSIONS (mm)		PIECES PER PAD
		HEIGHT (A)	DIAMETER (B)	
17020	B, W, BR, G	5.8	12.7	200
17021	B, G	9.7	19.8	1
17022	B, W, BR, G	7.6	20.6	98
17023	B, W, BR, G	2.5	10.2	242
17024	B, BR	6.4	19.8	98
17025	B, W, BR, G	3.0	12.7	200

## Self-Adhesive Bumpers (page 2 of 3)

### CYLINDRICAL

Cylindrical flat top bumper stops are commonly used to protect surfaces and prevent sliding. The flat top shape is ideal for load bearing applications as feet on the bottom of small appliances, cutting boards, or laptops. The flat top design can be used as spacers under glass tables and for airflow under network equipment.



The exact shape of each part can vary. Please contact NPA for data sheets of specific items.

#### Colours:

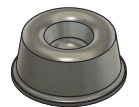
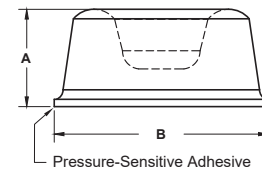
Clear is standard for all parts. Additional colours are black (B), white (W), brown (BR) and grey (G).

When ordering a non-clear part, add the colour abbreviation as a suffix to the part number eg. "17009B" for a black part.

PART NO.	COLOURS	PART DIMENSIONS (mm)		PIECES PER PAD
		HEIGHT (A)	DIAMETER (B)	
17009	B, W, BR, G	3.5	12.7	200
17010	B, W, BR, G	1.5	12.7	200
17011	B, W, G	6.4	12.7	200
17012	B	10.2	16.5	128
17014	B, W, G	3.0	20.6	72
17015	B, W	3.2	9.5	300
17016	B, G	4.8	9.5	200
17018	B, W, G	4.1	19.1	98

### CYLINDRICAL RECESSED

Recessed rubber stoppers have a cavity in the center which creates extra reinforcement for high impact applications. Can be placed on a wall to protect it from a door handle. The recessed hole can be used to place a screw, nail or staple through the bumper for permanent attachment to an application.



17027-17028

#### Colours:

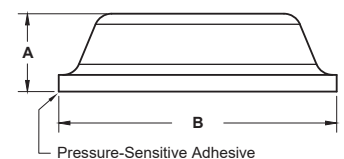
Clear is standard for all parts. Additional colours are black (B), white (W), brown (BR) and grey (G).

When ordering a non-clear part, add the colour abbreviation as a suffix to the part number eg. "17009B" for a black part.

PART NO.	COLOURS	PART DIMENSIONS (mm)		PIECES PER PAD
		HEIGHT (A)	DIAMETER (B)	
17027	B, W, BR, G	10.2	22.3	72
17028	B, W, BR, G	15.2	46.0	1

### SOFT DUROMETER

Special soft Bumpers designed to absorb energy from closing cabinet doors and drawers. These parts have been specifically engineered to provide the quietest close available for any cabinet door. The Soft Durometer Bumpers were not designed for load bearing applications.



#### Colours:

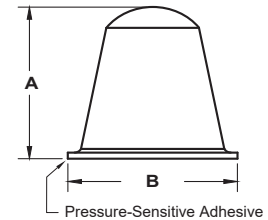
This item is available in clear only.

PART NO.	PART DIMENSIONS (mm)		PIECES PER PAD
	HEIGHT (A)	DIAMETER (B)	
17009SD	3.5	12.7	200

## Self-Adhesive Bumpers (page 3 of 3)

### CONICAL

Cone-shaped rubber spacers that have a rounded point at the tip. These are our tallest rubber bumpers available for applications that require extra height and space. Commonly used on automotive applications as rattle reducers.



PART NO.	PART DIMENSIONS (mm)		PIECES PER PAD
	HEIGHT (A)	DIAMETER (B)	
17030	19.1	19.1	1

#### Colours:

Clear is standard. Also available in black (B).

When ordering a black part, add a "B" as a suffix to the part number eg. "17030B".

Only our most popular items are listed here. There are many more available. Call us for samples and more information.

**+61 8 8268-2733**