

**cino**

## **FUZZYSCAN 800 Series**

**A series of Ultra-Rugged Imagers  
for industrial and demanding applications**



# Cino Handheld Scanning Solution

## 500 Series

Stylish, Light-Weight



Ideal for Retail and  
Hospitality Applications

## 600 Series

Compact, Well-Balanced



Ideal for Retail and  
Commercial Applications

## 700 Series

Durable, Ergonomic



Ideal for Enterprise and  
Healthcare Applications

## 800 Series

**Ultra-Rugged**



**Ideal for Industrial and  
Demanding Applications**

# Designed For Demanding Needs



**Manufacturing**



**Semiconductor**



**Automotive**



**Refinery**



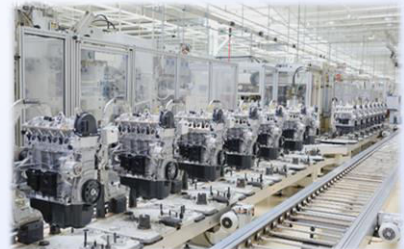
**Logistics**



**Cold Chain**



**Heavy Industry**



**Production Line**

# Ultimate Reliability



**IP68**  
Sealing

**30KV**  
ESD

**Highest  
Standard**

**-30°C  
to  
60°C**

**3M**  
Drop resist

**8,000**  
Tumbles

# Outstanding Reading Performance

2D

## A890/A898BT

**1280x1080**

Global-Shutter  
Image Sensor

Choice of SR, HD & DP Model

**120 FPS**  
Frame Rate

**15%**  
Print Contrast

LED or Laser Aimer

Dual-Color Lighting

DPM Decoding

Diffused Illumination

iTune

1D

## F890/F898BT

**Up to 800**  
Dynamic scanning rate

**10%**  
Print Contrast



# Professional DPM Solution



## Diffused Illumination

Equipped with a purpose-built ring illumination and rich lighting control to read extremely high-density barcodes in a flash.

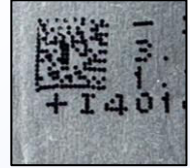
## DPM Decoding

Powered by an advanced DPM decoding algorithm to read DPM codes and overcome damaged or curved barcodes with unrivaled snappiness.



## iTune

A one-step smart-tuning function for optimization of readability.



# Imager Overview



Highly Reliable Trigger

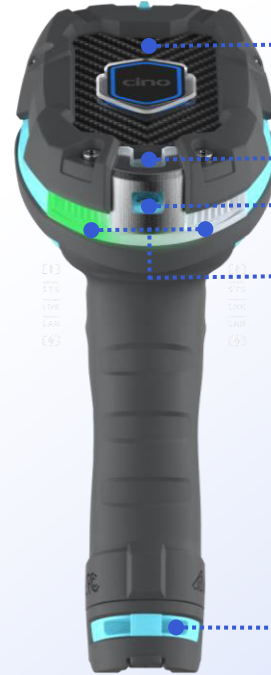
Dual-Color Illumination



DPM Model with Diffused Illumination (DP only)



Interface Cable with Cable Clip (Corded Imager)



Tailor-Made Carbon Cover

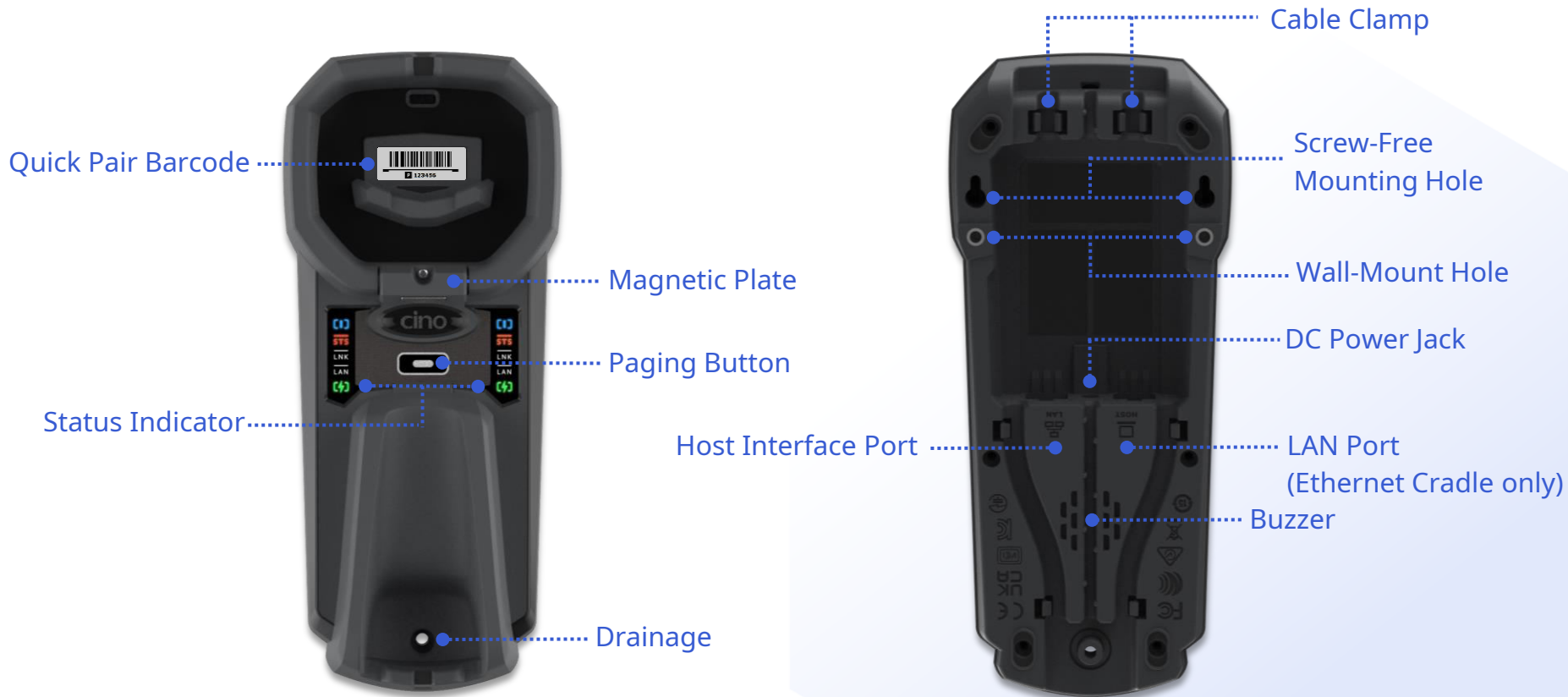
Power Indicator

Hanger Bracket

Status Indicator

Lanyard Hole

# Smart Cradle Overview





# Flexible Installation



**Desktop Application**



**Mounting kit-free wall installation**



**Anti-Vibration Design**

# Battery-Free & Wireless Charging



750 Farads

## Super Capacitor UltraCap™

- Long lifespan reduces battery consumption cost
- Exemplifies enterprise's ESG commitment
- Quick-Get-Up-and-Go



Wireless Charging Smart Cradle

## Swappable & Interchangeable



Battery pack



UltraCap



Built-In Type C Port



# Target Competitors



	Cino A800 Series	Honeywell 1990i Series	Zebra DS3600 Series	Datalogic PD9600 Series
Aiming Pattern	LED or Laser Aimer	Laser Aimer	LED or Laser Aimer	LED or Laser Aimer
Illumination	<b>Dual-color (Red + White)</b>	Red	White	White
Image Sensor	<b>1280 x 1080</b>	1280 x 800	1280 x 960	1280 x 800
Print Contrast	15%	20%	15%	15%
Frame Rate	<b>120 fps</b>	60 fps	60 fps	60 fps
Drop Resistance	3.0m	3.0m	3.0m	2.5m
IP Sealing	<b>IP68</b>	IP67	IP68	IP67
Tumbles	<b>8,000 tumbles</b>	7,000 tumbles	7,500 tumbles	?
Operating Temperature	<b>-30°C to 60°C</b>	-30°C to 50°C	-30°C to 50°C	-20°C to 50°C
ESD Protection	<b>30KV air discharge 12KV contact discharge</b>	20 KV air discharge 8 KV contact discharge	25 KV air discharge 10 KV contact discharge	20KV
Wireless Charging	<b>V</b>	X	X	V
Battery-Free Supported	<b>V</b>	X	X	X
DPM Model	<b>V</b>	X	V	V
iTune	<b>V</b>	X	X	X

# SKUs

## Corded Imager

- **Standard Kit**

- Corded scanner unit
- USB or RS232 interface cable



## Cordless Imager

- **Imager Kit**

- Cordless scanner unit
- Li-ion battery pack or UltraCap™ pack
- USB cable (USB-C to USB-A)



- **Smart Cradle Premium Kit**

- Cordless scanner unit
- Smart cradle
- Li-ion battery pack or UltraCap™ pack
- Power supply unit
- USB or RS232 interface cable



**cino**