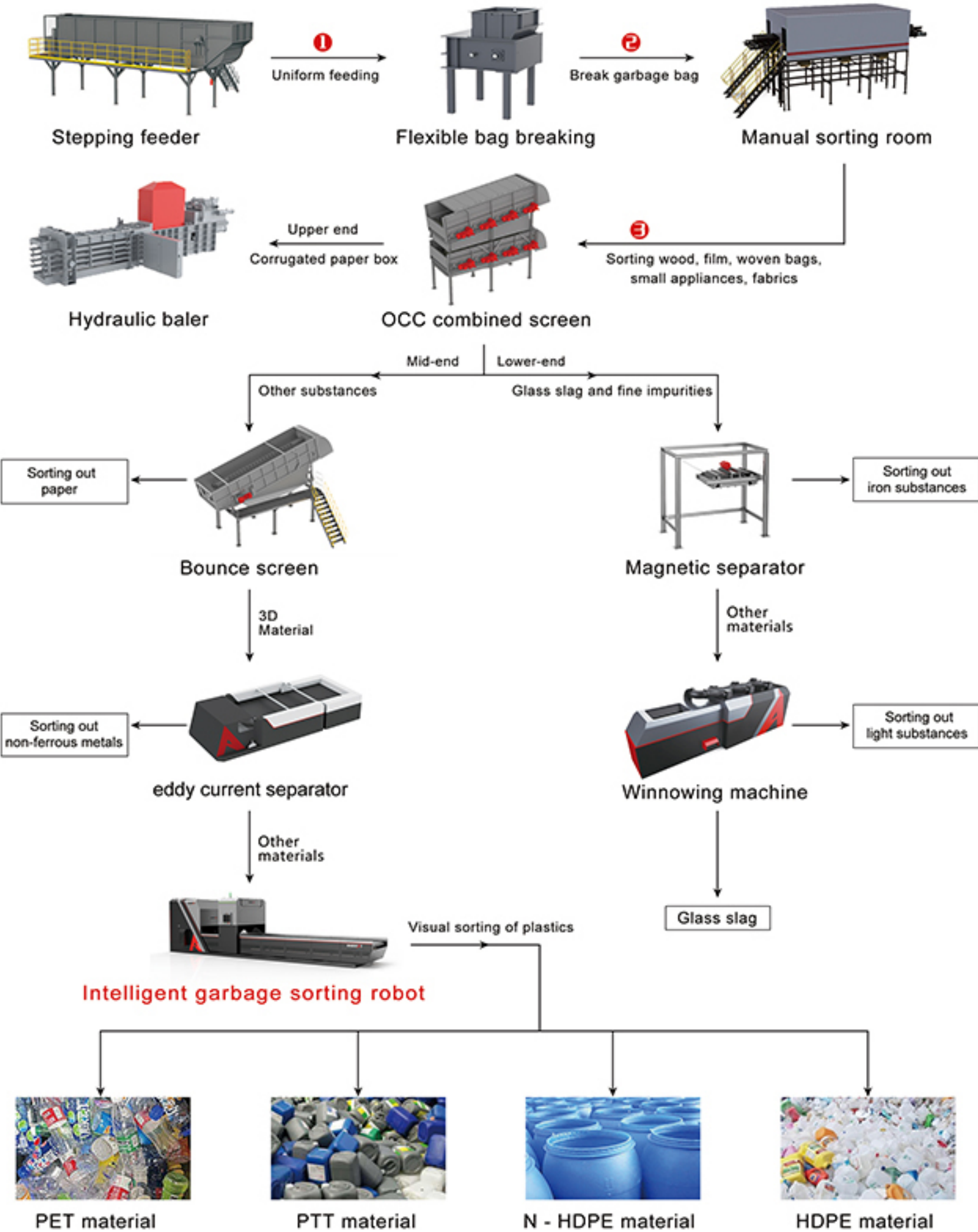


>>> Application of AI Sorting Robot in the Center of Recyclable Sub-Blocks >>>

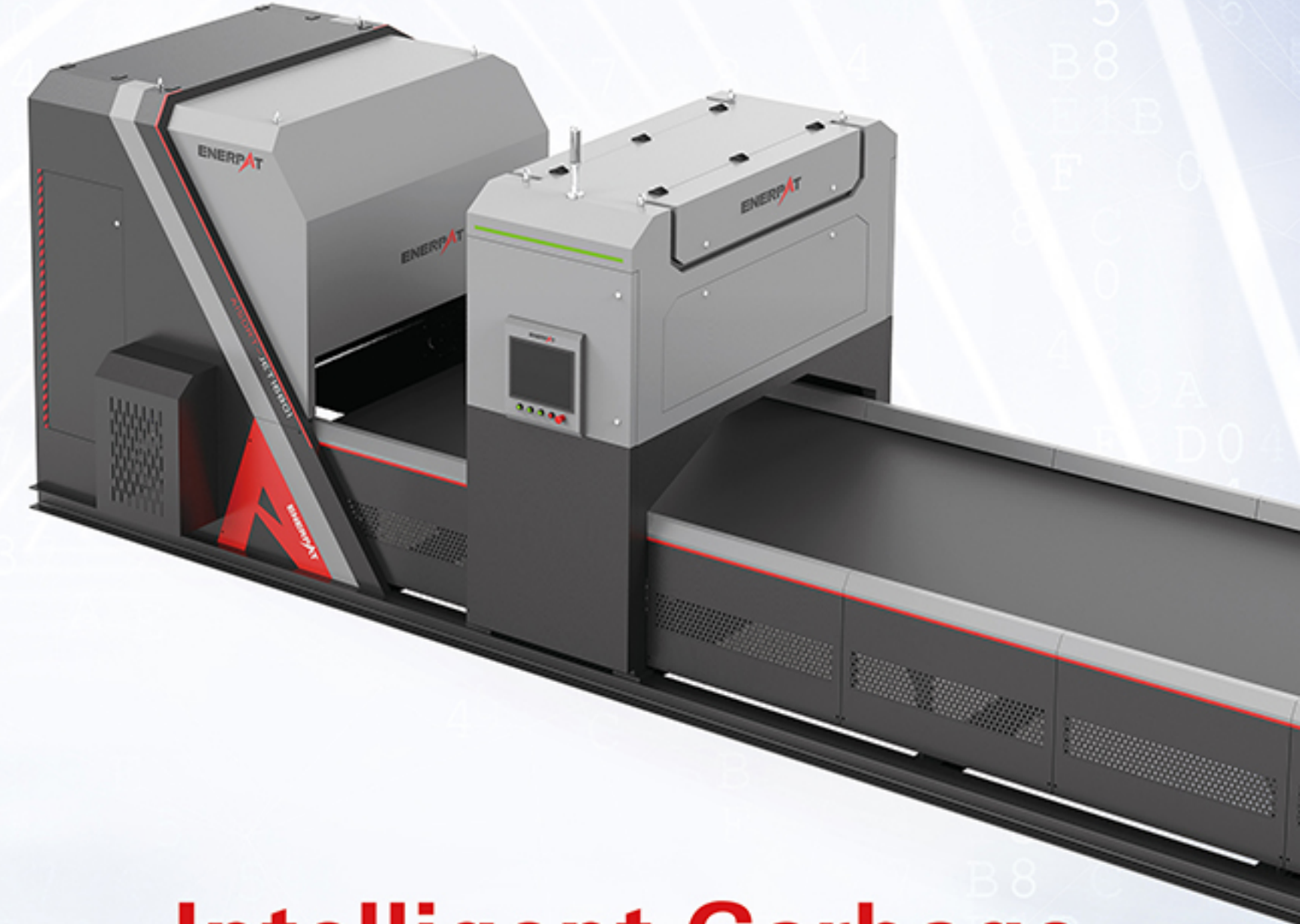


Model	JET10301	JET10601	JET14301
Sorting efficiency	1t/h	3t/h	2t/h
Conveyor belt width	1.0m	1.0m	1.4m
Length of conveyor belt	3m	6m	3m
Design conveyor line speed	0-3.5 m/s	0-3.5 m/s	0-3.5 m/s
Discharging bin with two-part position	●	●	●
High-speed AI visual recognition system	●	●	●
PAIK inside sorting software	●	●	●
Motor Power	●	●	●
Multi-hole high-frequency jet module	5KW	6KW	5KW
Screw compressor	15KW/○	15KW/○	15KW/○
Deep learning control host	●	●	●

Model	JET14601	JET20601	JET28601
Sorting efficiency	5t/h	7t/h	9t/h
Conveyor belt width	1.4m	2.0m	2.8m
Length of conveyor belt	6m	6m	6m
Design conveyor line speed	0-3.5 m/s	0-3.5 m/s	0-3.5 m/s
Discharging bin with two-part position	●	●	●
High-speed AI visual recognition system	●	●	●
PAIK inside sorting software	●	●	●
Motor Power	●	●	●
Multi-hole high-frequency jet module	8.5KW	10KW	12KW
Screw compressor	15KW/○	22KW/○	22KW/○
Deep learning control host	●	●	●

Note: ● indicates standard configuration; ○ indicates optional configuration

ENERPAT®
Global Waste Disposal System Supplier



Intelligent Garbage Sorting Machine



Email: info@enerpatgroup.com | Add: No 2, Xintai Road, Changqing Industry Zone, Rugao, Nantong, Jiangsu, China
Email: enerpatcompany@gmail.com



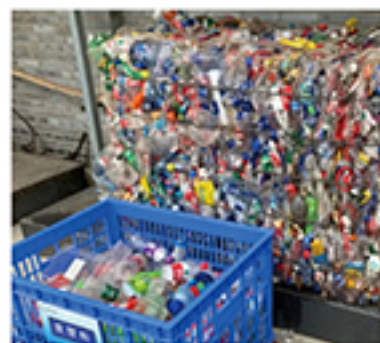
ENERPAT GROUP UK
ENERPAT UK. CHINA PRODUCTION BASE

Have you encountered these sorting **problems**?



It is difficult to recruit and retain workers

The requirement of labor profession is high. It is difficult to recruit skilled workers. It is difficult to train new workers.



High intensity and low productivity

The labor intensity is high, the 7*24h uninterrupted work can not be realized, and the productivity is low.



Severe environmental hazards

The working environment is heavily polluted and prone to occupational diseases such as pneumoconiosis, and the production safety cannot be guaranteed.



Difficulty in enterprise transformation

The industry is highly replaceable and has no market competitiveness. Under the current environmental protection policy, it is difficult for enterprises to survive and develop.

Which sorting problems can be solved by **enerpat robotics**?

The ENERPAT robotics uses intelligent high-precision sorting equipment instead of manual sorting to reduce costs and increase efficiency for enterprises, realize industrial transformation and upgrading, improve market competitiveness, and help enterprises "accelerate development".



It can be applied to a plurality of scenes and realizes the separation of mixed plastic, waste paper, urban domestic garbage, construction waste, nonferrous metal and electronic waste.



Recyclable sorting center



Plastic baling station



Renewable Resource Center



Green Sort Center

- As a fast-growing artificial intelligent technology enterprise, with the mission of industrial unmanned operation and maintenance, the company is committed to the development of robot system, the construction of operation and maintenance system and the implementation of terminal solutions. The company deeply arranges the fields of intelligent environment, intelligent photovoltaic, intelligent agriculture, intelligent industry, intelligent driving, etc. The company has set up R&D and operation and maintenance centers in Shanghai, Shenzhen, Hangzhou, Suzhou, Changzhou, Nantong and other cities.

- The Company now has three core technologies: powerful database support technology, independently developed human-like visual recognition technology and PaikeNet convolution neural network learning technology, which have been successfully applied to environmental sanitation, environmental protection, photovoltaic, agriculture, security and other industries; AITARGET autonomous navigation system independently developed by the company has completely realized indoor and outdoor autonomous navigation.

- Working principle: through pure visual sorting technology, it can quickly identify the material's characteristics such as material quality, color, appearance (new or old), brand, function, label (with or without), size, etc.**

- ✓ Photoelectric separation technology
- ✓ Machine vision inspection one by one
- ✓ Human-like vision recognition technology
- ✓ Remote control system
- ✓ Mass data processing
- ✓ Multi-sensor fusion technology



High speed conveyor belt



Jetting technology



Artificial intelligence



Large database

FAST SORTING SPEED

- Standard belt speed is 3m/s, up to 5m/s.
- Suitable for large-scale sorting, for example, the treatment capacity of regenerated PET can reach up to 8 tons/hour.



GOOD SORTING EFFECT

- The sorting accuracy can reach over 95%, and the material removal rate is low, which is suitable for fine sorting.
- Algorithm adjustment can be made according to the customer's on-site materials to improve the sorting effect.



STRONG RECOGNITION ABILITY

- Self-developed framework is adopted to greatly enhance the sorting precision, and it can identify various fine materials and color characteristics.
- It can quickly identify the color, appearance, shape, size and even brand characteristics of the waste.



WIDE APPLICATION RANGE

- It can be applied to the sorting of various recyclable materials, such as waste paper, PET bottles, HDPE bottles, pop cans and plastic bags, etc.
- It can support the sorting of PET bottles, PP bottles, HDPE bottles, aluminum cans, iron cans, etc. with or without labels.

