

Paxum[®] X100

Paxum Fully Automatic
Pallet Wrapping Machine
With Power Pre-stretch
Head, Remote Control
and Scale

#62212-s



**Built-In
Scale**

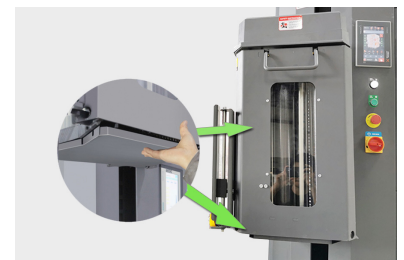
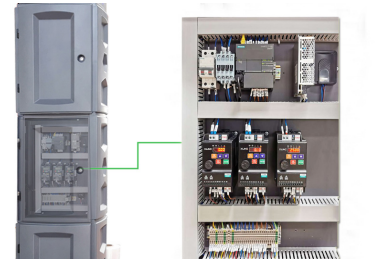
**Auto Height
Detection**

**Remote Control
Operation**

**Cutting Edge
Technology**

Features

- Built-In Scale
- High efficiency and low energy consumption
- Remote Controlled System
- Automatic Photoelectric sensor detects pallet height
- Automatic film cut and clamp function
- Multi-layer function: This function can set different wrapping cycles and wrapping tension at any height, up to 9 layers per pallet.
- 400% pre-stretch film rate
- Advanced Safety Technology
 - Safety device under film carriage to protect the foot or head of the operator
 - Transparent panel makes it easy to find problem without opening door.
 - Up and down belt deviation and damaged alarm system
- High quality electrical components
- LCD Touch Operating System
- Automatic Rope Grip System
- Soft start and soft stop
- Intelligent Alarm system with LED Indicator
- 1650mm turntable
- 2350mm wrapping height
- Max load weight: 2000KG
- 1 Year Warranty



Specifications

| | |
|-----------------------------|--|
| Production Rate | 20-25 loads/hour |
| Turntable Speed | 3-12RPM(Adjustable) |
| Turntable Diameter | 1650mm |
| Max. Load Weight | 2000kgs |
| Std. Wrapping Height | 2350mm |
| Pre-stretch Rate | 400% pre-stretch maximum |
| Up & Down Speed | 1.5 ~5.5 m/mins |
| Voltage | 240V |
| Machine weight | 680kg |
| Machine size | L2710mm*W1650mm*H2720mm |
| Film Spec. | 500mm wide, 250mm diameter, 76mm core diameter |
| PLC | Siemens |
| Compressed Air | No |
| Technical Data | Operation Manual |
| Warranty | 1 Year |

