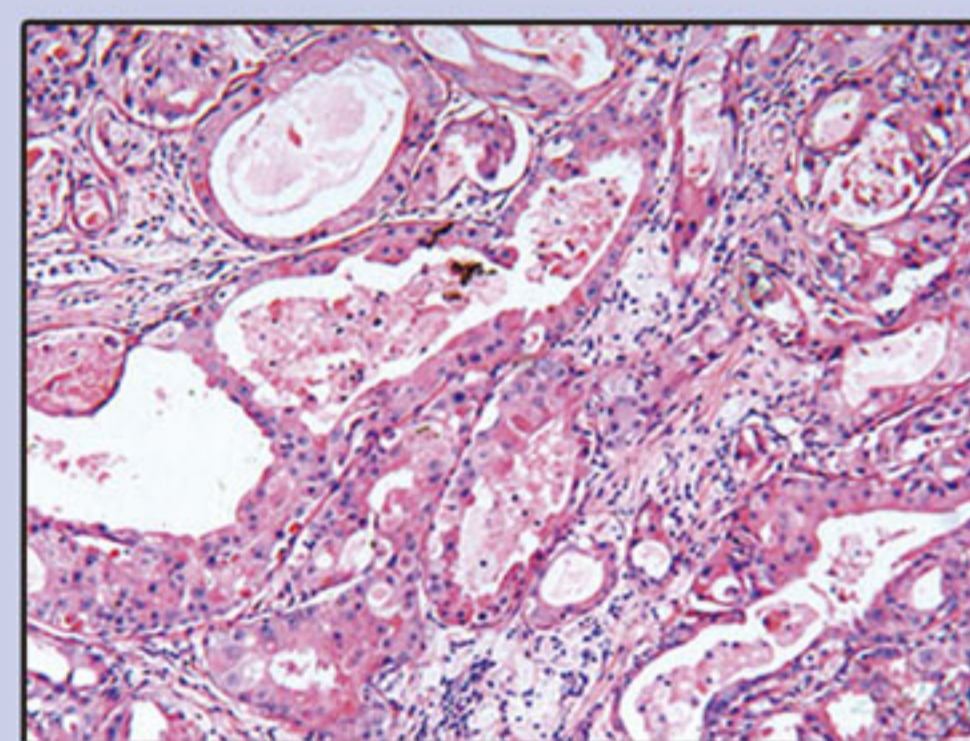
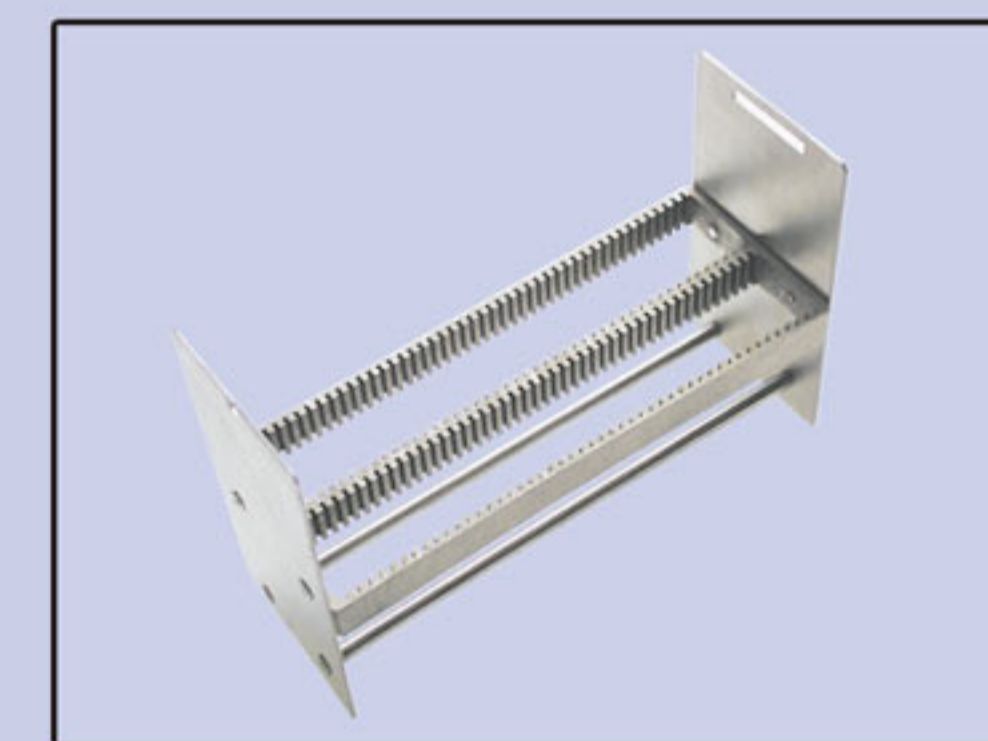
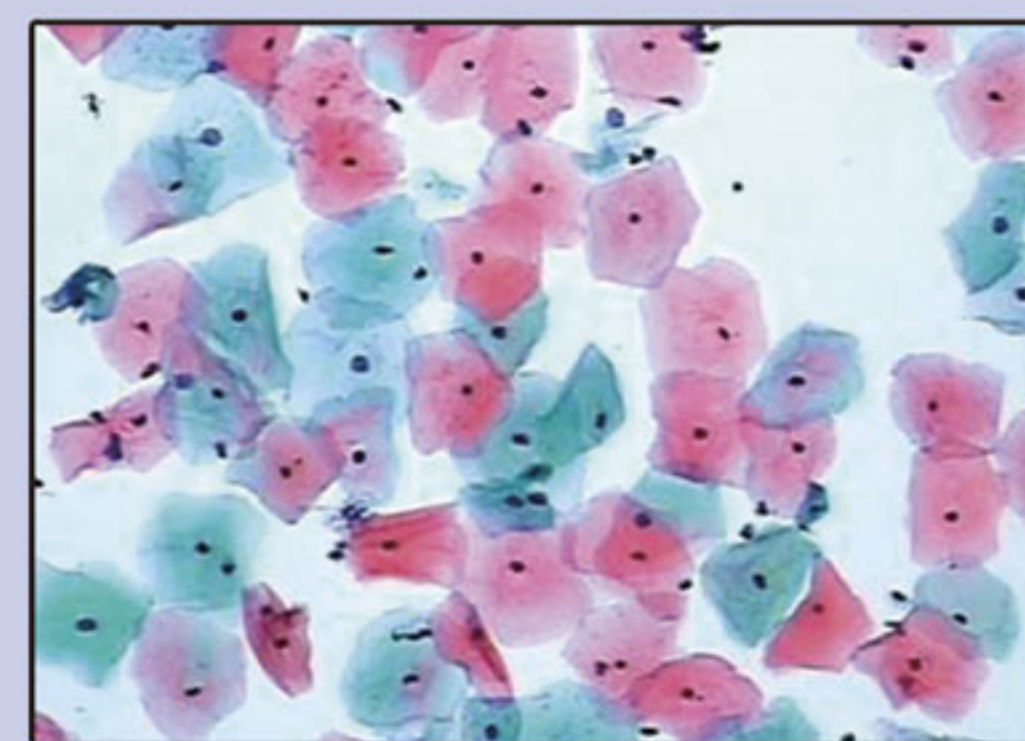


**H&E Staining**



**Pap Staining**



**Staining Rack**

# ASS 190 Slide Stainer

## Characteristics

- Advanced Microcomputer intelligent control system .
- Two protocols can run simultaneously in two slide racks respectively that can dramatically improve staining efficiency .
- In addition to staining function, users also can set up maximum 25 steps in one programs for special requirements tests.
- 4 groups (8 different) programs can be set up respectively for meeting various staining requirement, washing function is also included.
- Automated program checking function: this function can protect the device from damages in case of incorrect programming .
- Alarm function : the alarm“beeps” goes off once any incorrect operation is detected .
- Second running function : it can start to run from desired step when it happens to some problem or does not get good effect in first running .
- The high-performance stepping motor utilized to ensure the stability and accuracy with low noise level .
- The streamlined exterior shape makes it easier to clean .
- Concerning users’health: The active carbon utilized to absorb volatile gases and prevent toxic gases from entering the laboratory environment .
- LCD: with user-friendly keyboard to program and display all information concerning staining .
- Protection function: it can prevent damage to tissue samples caused by rack movement be physically blocked while in operation .
- The in/out water pipe allows to wash the tissue at any stages .

## Technical Specifications

NO	Specification	ASS 190
1	Quantity of slide racks	2
2	Capacity	96 slides at a time ( 48 slides on each slide rack)
3	Number of tanks	19
4	Volume of container	800ml for each tank , the first and second tank comprise the washing station
5	Staining time in each tank	1 seconds~99minutes 59 seconds , can be set as desired
6	Two racks can be agitated every 15 seconds and the agitation time can be set from 5 to 30 seconds	
7	Voltage/Frequency	220V ± 10% , 50HZ / 110V ± 10% , 60HZ
8	Power	120 W
9	Dimensions ( W×D×H)	1247x470x550mm
10	Weight	about 75kg

