

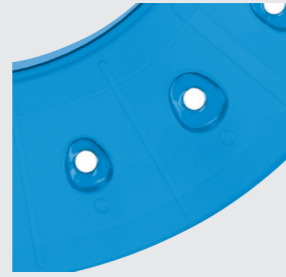
Silicone Inserts

The Cervico Premium Mold is available with the centered silicone insert.

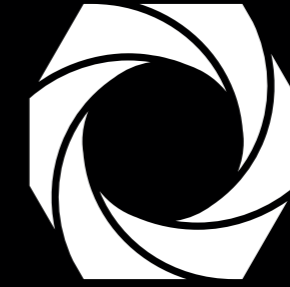
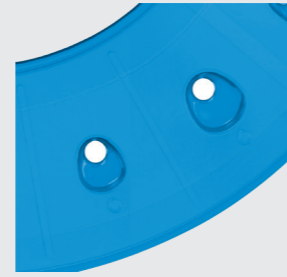
An off-centered silicone insert is also available for purchase as an accessory. This silicone insert allows the fabrication of custom healing abutments and impression posts that have a custom body off centered in relation to the axis of the temporary abutment or impression post. This is particularly useful for lingually placed implants in immediate extraction and implantation protocols.



Centered silicone insert



Off - Centered silicone insert



Cervico *by* VPI

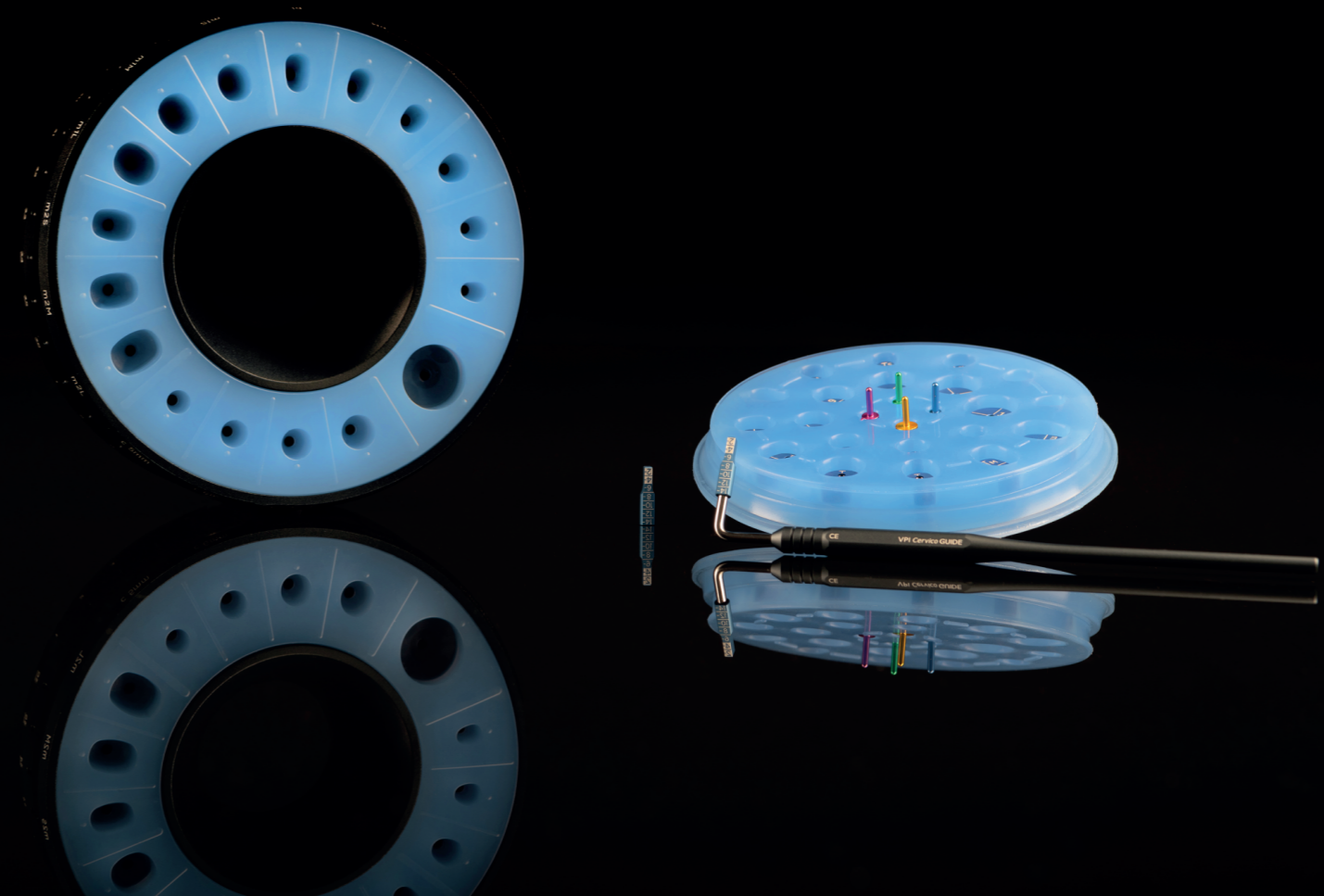
MASTERING THE EMERGENCE PROFILE

VPI Prosthetic Connection Inserts



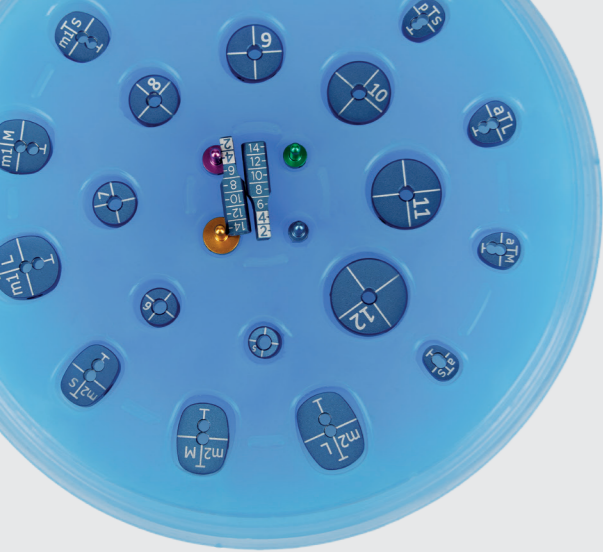
A VPI Prosthetic connection insert (implant replica) is a unit that features an innovative design that replicates the prosthetic connection and platform of a given implant. The external design allows the installation of the insert into the base of the mold in two functional orientations and 3D stable positions. The internal design of the VPI Prosthetic connection insert (implant replica) allows it in many occasions to be functional with multiple platform sizes of the same prosthetic connection.

Each insert is available with a retention screw that allows its safe coupling to the Cervico Premium Mold. The insert has its item number and orientation markings on its outer surface.



VP INNOVATO HOLDINGS

www.innovatoholdings.com
info@innovatoholdings.com



Cervico Guide

The Cervico Guide is a re-usable, autoclavable, multi-use tool that can be used for an accurate, easy and fast intra-oral identification of the proper size and shape custom healing abutment that is needed for the patient.

This tool can be used for the:

- |Cervical profile evaluation of the implant site.
- |Marking or initiation of the implant osteotomy.
- |Evaluation of available mesio-distal space and indirect correlation to proper implant platform size.

How it works

By simply evaluating the prosthetic space with the tab connected to the handle the clinician can identify, and therefore correlate, which size and shape Cervico healer (custom healing abutment) needs to be prepared; E.g.: The anatomical tab of the Cervico Guide with coding (pS) corresponds to the well of the Cervico Premium Mold with (pS) coding, etc. This tool can also be used as a surgical guide for the proper positioning of the implant osteotomy. The orientation T line of the anatomical tabs, serves as reference for correct orientation of the prosthetic connection of the implant in space. This will allow proper orientation of the anatomical healing abutment once coupled with the implant. Implant companies utilize orientation markers on their implant carriers to allow proper control of implant prosthetic connection orientation in space. Simply orient these markers towards the T-line.

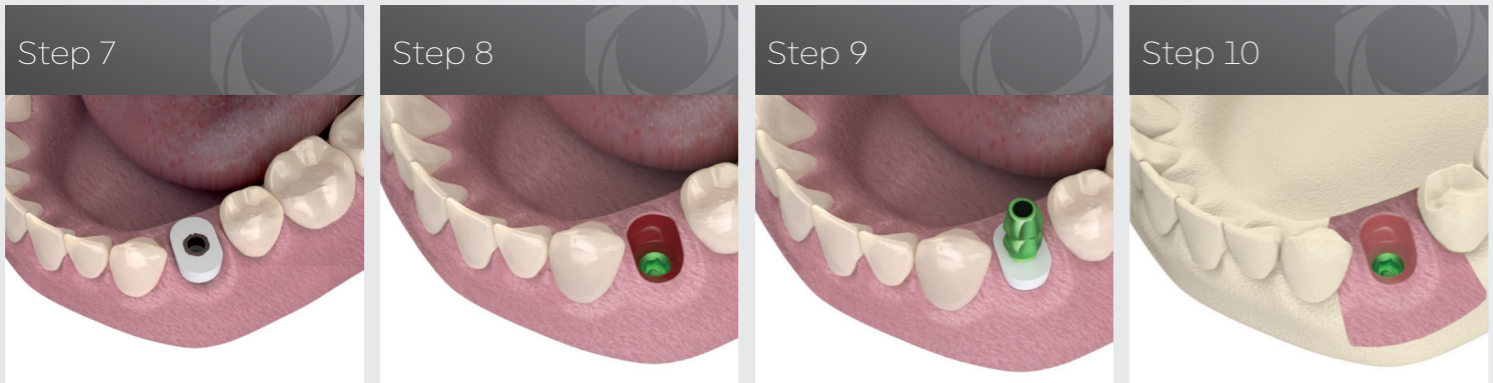


Step 1 Evaluate the edentulous mesio-distal dimensions with the cylindrical tab to ensure adequate space for safe implant placement.

Step 2 Use the anatomical tabs in order to identify the proper shape and size Cervico healer to be utilized.

Step 3 Utilize the cylindrical tab of the Guide to ensure centered osteotomy preparation.

Step 4 Utilize the Cervico Guide pins during the osteotomy preparations to confirm proper osteotomy position and angulation.



Step 5 Fill in the open space with suitable dental composite material and light cure for 40 sec.

Step 6 Couple thread an impression post and fill in the open space with a suitable dental composite material and light cure for 40 sec.

Step 7 Couple the Cervico healing abutment with the implant at time of implant placement or at uncover. Allow sufficient healing time.

Step 8 Uncouple the healing abutment and reveal the generated natural soft tissue profile.

Step 9 Couple thread the custom impression post with the same orientation and following, take an implant impression.

Step 10 Generated soft tissue profile accurately transferred to the working cast

Cervico Premium Mold

The Cervico Premium Mold is an in-office tool used for the fabrication of anatomically shaped customizable shaped healing abutments and impression posts made out of composite material.

It can also be used for the duplication of a modified healing abutment or temporary prosthesis to a duplicate impression post. It features 17 wells of different shapes and / or dimensions that can be used for all of the above purposes.

Included with the Cervico Premium Mold:

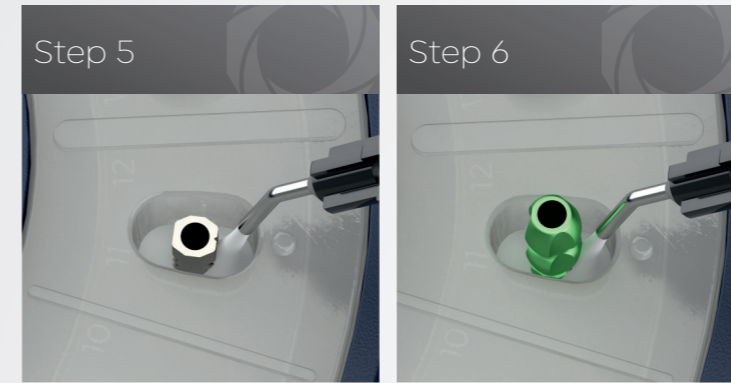
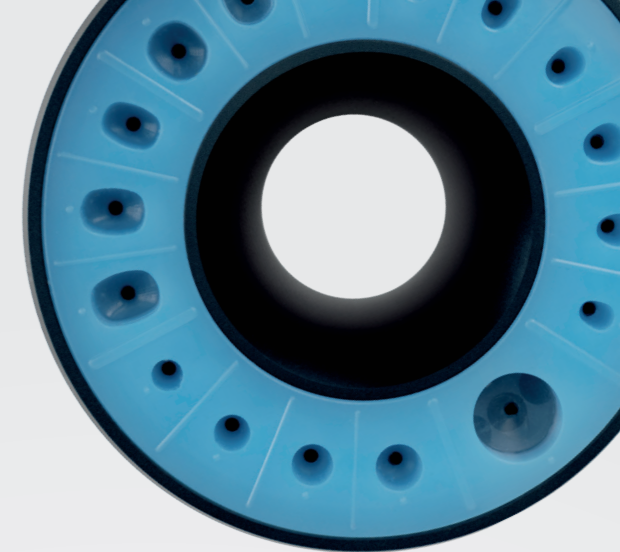
- |Mold Base
- |Centered Silicone Insert
- |Base screw driver

How it works

The top ring of the base carries a letter coding that corresponds to the shape and size of the well of the silicone insert.

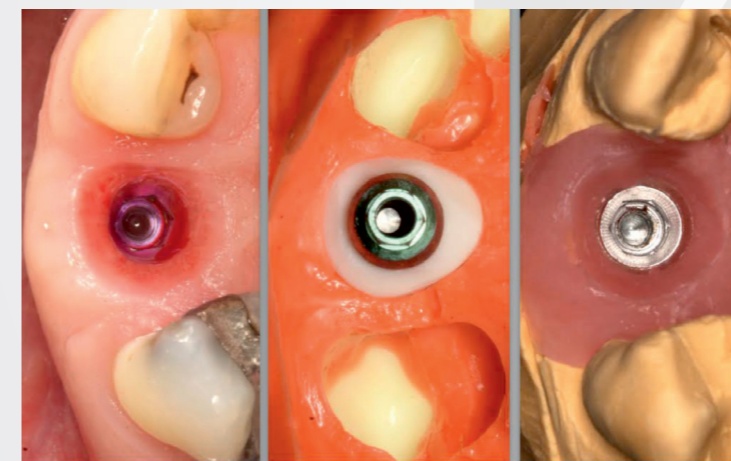
The bottom ring of the base carries a number coding that corresponds to the VPI Prosthetic connection Insert (implant replica) installed into the base.

The top ring of the base, along with the silicone insert installed in a stable position within it, can rotate in relation to the bottom ring of the base. This allows the alignment of different wells of the silicone insert with different VPI Prosthetic connection Inserts (implant replicas) installed into the base of the mold.



Step 5 Fill in the open space with suitable dental composite material and light cure for 40 sec.

Step 6 Couple thread an impression post and fill in the open space with a suitable dental composite material and light cure for 40 sec.



Anterior clinical case

