

# Paxum® T1000

Paxum Fully Automatic Pallet  
Wrapping Machine – Rotary  
Arm

#62215



Reliable  
Technology

Quality  
Parts

High  
Efficiency

Noiseless  
Operation

The Paxum T1000 model is a Fully Automatic Pallet Wrapping Machine. Designed for industrial applications, this cutting-edge machine offers exceptional efficiency and performance for your packaging needs. With advanced features and reliable technology, it is the ultimate solution to optimize your pallet wrapping process.

## Highlights

- **High Efficiency:**
  - Slewing bearing transmission
  - Noiseless, maintenance-free
  - Handles 35-40 loads/hour
  - No additional counterweights needed
- **More Powerful:**
  - Ultimate film-clamping effect
  - Precise cylinder film-cutting
  - Mechanical filming system
- **Save Cost:**
  - Up to 400% pre-stretch rate
  - Standard constant releasing film
  - Precise fixed-pointed wrapping
- **Quality Spare Parts:**
  - Reliable SICK proximity switch
  - Photoelectric sensor for accuracy
  - Weidmuller Terminal Board connectivity
  - Advanced SIEMENS PLC and Inverters

## Features

- Auto film cutting and clamping
- Automatic top sheet dispenser (optional)
- Automatic cardboard corner fixer (optional)
- SEW & SIEMENS motor drive system
- Advanced photoelectric sensor
- Noiseless operation
- Maximum pre-stretch rate of up to 400%
- 3 Year Warranty

## Options

- Top Pressure Function
- Lifting Up Conveyor
- Top Sheet Dispenser
- Cardboard Corner Fixer



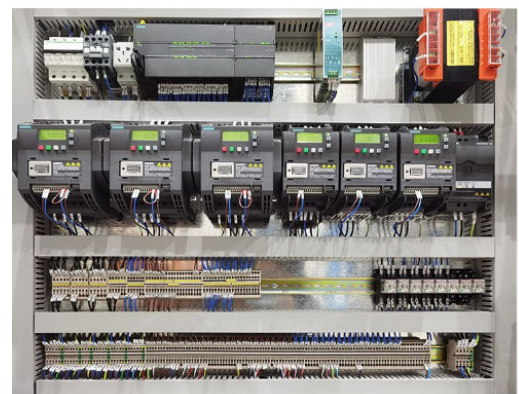
High Efficiency



Powerful Film Clamp & Cut



400% Pre-Stretch



Quality Parts

## Specifications

<b>Maximum Wrapping Speed</b>	35-40 loads/hour	<b>Machine Weight</b>	2000KG
<b>Max Pallet Size</b>	1.2x1.2m	<b>Voltage</b>	380V/60HZ
<b>Maximum Wrapping Height</b>	2000mm	<b>Frame</b>	Steel
<b>Ring Speed</b>	0-30RPM(Adjustable)	<b>Printing</b>	Metallic Paint
<b>Ring Size</b>	2000mm	<b>Cutting</b>	Laser
<b>Ring Drive Power</b>	1.5PH	<b>Inverter</b>	SIEMENS
<b>Cut And Clamp Film</b>	Automatic (Heat type)	<b>Position Sensor</b>	SICK
<b>Standard Film Width</b>	500mm	<b>PLC</b>	SIEMENS
<b>Pre-Stretch Rate</b>	Up to 400%	<b>Travel Switch</b>	OMRON
<b>Constant Film Delivery Force</b>	Standard	<b>Ring Drive Motor</b>	JSK
<b>Film Capacity</b>	Diameter: 250mm	<b>Relay</b>	OMRON
<b>Top Pressure Function</b>	Optional	<b>Touch screen</b>	SIEMENS
<b>Lifting Up Conveyor</b>	Optional	<b>Switch</b>	Schneider
<b>Top Sheet Dispenser</b>	Optional	<b>Cylinder</b>	AIRTAC
<b>Cardboard Corner Fixer</b>	Optional	<b>Up and Down Motor</b>	JSK
<b>Machine Size</b>	3825*2900*3940mm	<b>Warranty</b>	3 Years



See me in action!

**Paxum® T1000**