

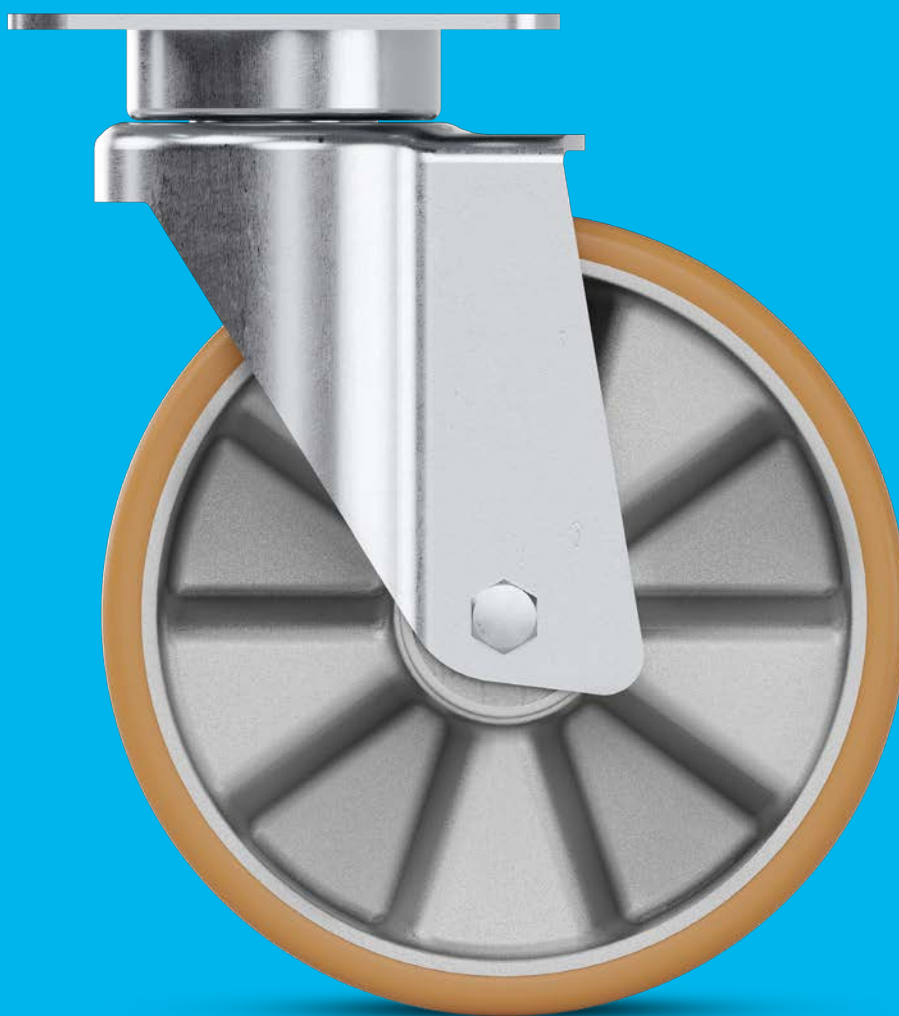
# PRODUCT INFORMATION

## DELTA

 300 - 750 kg

 178 - 265 mm

 125 - 200 mm



**TENTE**

BETTER MOBILITY. BETTER LIFE.

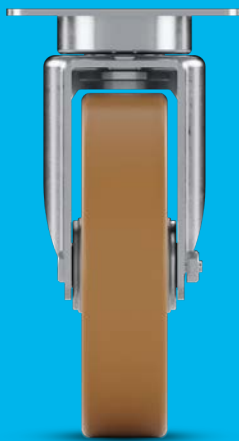
## HOUSINGS

PAGES: 4-9



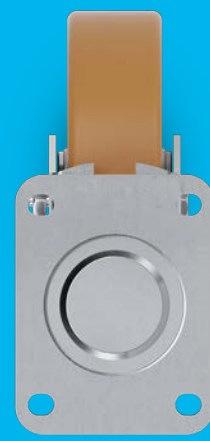
## WHEELS

PAGES: 10-15



## FITTINGS

PAGES: 16-19



# BETTER MOBILITY IN PREMIUM QUALITY

TENTE believes in smart mobility solutions which noticeably improve people's lives and their work environment. TENTE solutions increase productivity, ensure safety and open up new horizons in matters of design and durability as well as environmental friendliness. Leading manufacturers and companies of different industries rely on these competencies as well as our high production quality.

On the following pages you will find technical information about our Delta product family. We will also demonstrate the added value this mobility solution offers to your organisation. Features include:

## **Easy steering**

Swivel head with precision ball bearing.

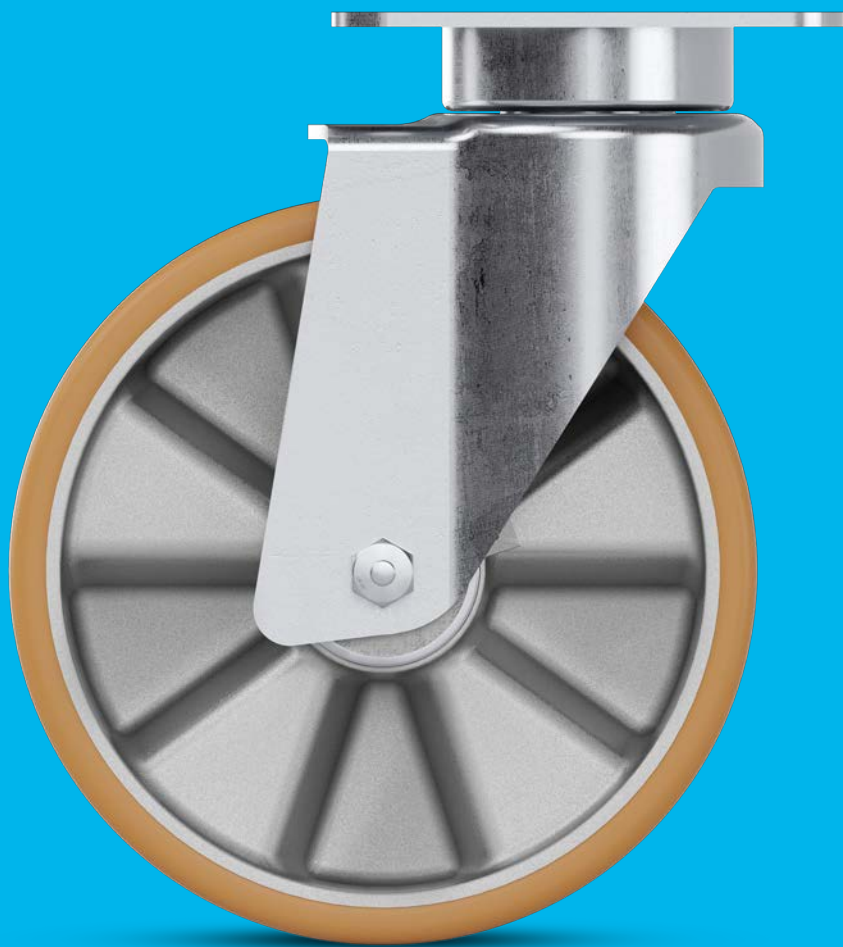
## **Flexible lock function**

Use of two independent actuation systems in one castor.

## **Strong construction**

Housing made of heavy steel for high load capacity.

# HOUSINGS

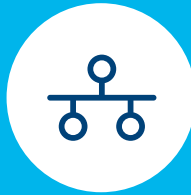


# FEATURES



## Optimised steering mechanism

Directional lock for improved steering around bends, as well as moving in a straight line over long distances.



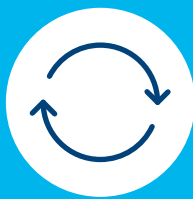
## Practical system solution

Practical system solution with all technical components for central locking.



## User-friendly central lock

Simultaneous locking of more than one castor using a central actuation lever.



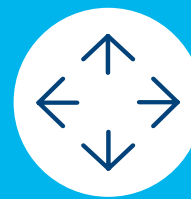
## Easy steering

Precision ball bearing in swivel head for excellent rotation properties under high loads.



## Flexible lock function

Use of two independent actuation systems in one castor.



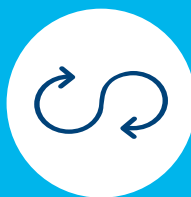
## Optimised directional lock

Directional lock can be adjusted to 2 x 180° or 4 x 90°, depending on your requirements.



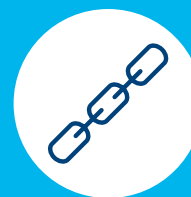
## Secured stand

Total lock for simultaneously locking the wheel and swivel housing.



## Uninterrupted use

Sealed swivel bearing for continuous, uninterrupted movement.



## Strong construction

Housing made of heavy steel for high load capacity.

# HOUSINGS

The housing is made of heavy pressed steel for high load capacity and is bright zinc plated and blue passivated. The covered swivel head has a sealed precision ball bearing and is maintenance-free. The materials are tested in our own laboratory to ensure they comply with European standards. Non-hazardous materials are used in order to comply with RoHS and REACH regulations. We have two types of housing, single wheel castors and twin wheel castors.

## Single wheel castors for loads up to 600 kg

### Swivel castor

Wheel and housing are free to move for easy manoeuvrability.



### Directional lock

Directional lock for improved steering around bends, as well as movement in a straight line for long distances.



### Total lock

Total lock for simultaneously locking the wheel and swivel housing for a secure stand.

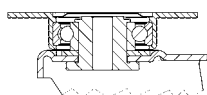


### Central wheel brake

Simultaneous locking of more than one castor using a central actuation lever. The wheel brake prevents unintended movement.



### Swivel bearings



Precision ball bearing for best manoeuvrability.

### Fixed castor

The wheel is free and the housing fixed so it cannot swivel but only move forwards and backwards and allows a stable movement.





#### Combination total and directional lock

Construction of the brake allows to use 1 x 360° directional lock on the same housing. Can be retrofitted.



#### Optimised directional lock

Can be adjusted to 2 x 180° or 4 x 90°, depending on your requirements. Long brake pedal on request.



#### Practical system solution

Technical components such as the profile bar and brake pedal are available for central locking. See page 19.



#### Increased occupational safety

Partially elastic foot protection to reduce accidents. Can also be used on uneven floors. It is available for all wheel diameters. Can be retrofitted. See page 19.

## Technical data and availability



<div> <div>i</div> <div>Description</div> </div>	Housing type	Swivel castor	Swivel castor with directional lock	Swivel castor with total lock	Swivel castor with central wheel brake	Fixed castor
	Article description	3640	3641	3642	3645	3648
	Material	Heavy pressed steel	Heavy pressed steel	Heavy pressed steel	Heavy pressed steel	Heavy pressed steel
	Swivel bearing	Precision ball bearing, sealed and covered swivel head	Precision ball bearing, sealed and covered swivel head	Precision ball bearing, sealed and covered swivel head	Precision ball bearing, sealed and covered swivel head	-
<div> <div>↺↻↺</div> <div>Swivel interference</div> </div>	Wheel Ø 125 mm	235 mm	235 mm	235 mm	-	●
	Wheel Ø 160 mm	270 mm	270 mm	270 mm	270 mm	●
	Wheel Ø 200 mm	310 mm	310 mm	310 mm	310 mm	●

Items with this sign "●" are available. Items with this sign "-" are not available in our standard range. Please contact us.

## Twin wheel castors for loads up to 750 kg



### Swivel castor

Wheels and housing are free to move for easy manoeuvrability.



### Total lock

Total lock to simultaneously lock the wheels and swivel housing, leading to a secure stand.



### Fixed castor

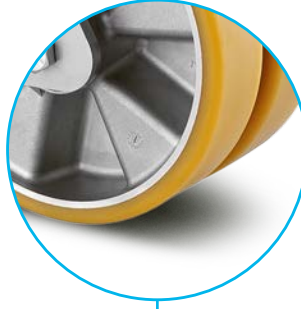
The wheels are free and the housing fixed so it cannot swivel but only move forwards and backwards. This allows a stable movement.





#### Robust housing with optimised manoeuvrability

Twin wheel castor with high manoeuvrability due to differential effect. Perfect for high load capacity and low height.



#### Protect floors with load distribution

Two wheels distribute the load and minimise floor pressure.



#### Ergonomic total lock system

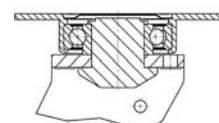
This brake system contains two pedals: one to lock the castor and a second one for easy release.

## Technical data and availability



Description	Housing type	Swivel castor	Swivel castor with total lock	Fixed castor
	Article description	9940	9942	9948
	Material	Heavy pressed steel	Heavy pressed steel	Heavy pressed steel
	Swivel bearing	Precision ball bearing, sealed and covered swivel head	Precision ball bearing, sealed and covered swivel head	-
Swivel interference	Wheel Ø 125 mm	235 mm	320 mm	●
	Wheel Ø 160 mm	270 mm	320 mm	●
	Wheel Ø 200 mm	310 mm	325 mm	●

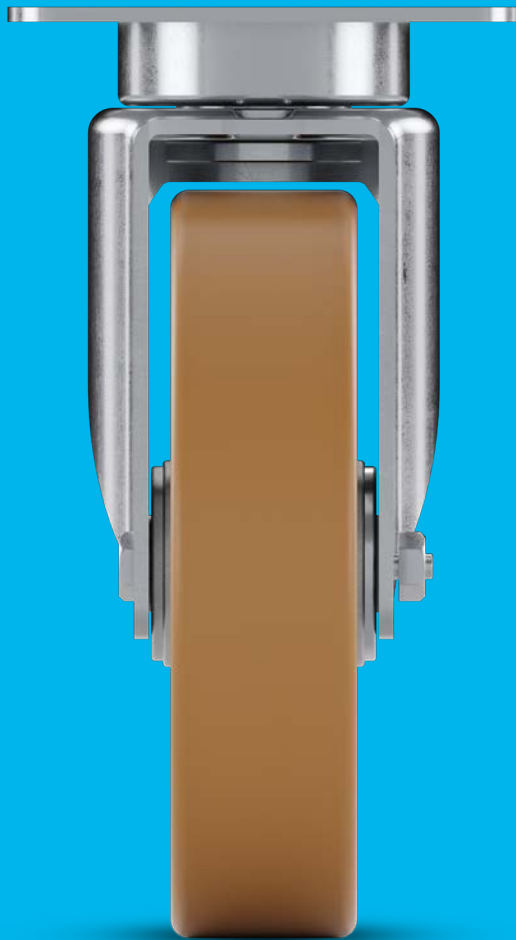
#### Swivel bearings



Precision ball bearing for best manoeuvrability.

Items with this sign "●" are available. Items with this sign "-" are not available in our standard range. Please contact us.

# WHEELS



# FEATURES



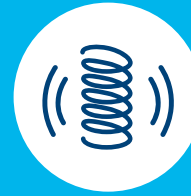
## Quiet rolling

Soft wheel versions for a quiet working environment. The hardness of the tread is variable to suit different materials and purposes.



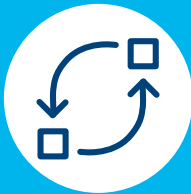
## Ergonomically friendly use

Wheels with optimised roll resistance to lighten the load for the user.



## Low-vibration transport

Extra soft wheels with good shock-absorbing properties.



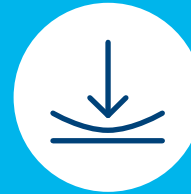
## Resource-conserving part replacement

Threaded axles allow effortless wheel change.



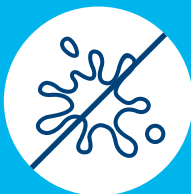
## Increased occupational safety

Partially elastic foot protection to reduce accidents. Can also be used on uneven floors.



## High pressure stability

Rigid for enhanced running comfort.



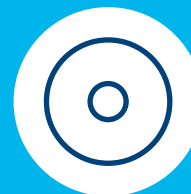
## Non-staining operation

Non-staining on contact with floors when left standing for long periods. Can also be used for floors made of untreated wood and natural stone.



## Non-marking movement

Wheels have reduced abrasion and little cleaning requirement.



## Low wear and tear wheels

Durable wheels with extremely low wear and tear.

# WHEELS

The characteristics of a wheel depend on the material and the bearing. The wheels are available in different levels of hardness. We can guarantee maximum manoeuvrability and quiet running, with a variety of treads.



## Elastech plus

Quiet-running elastic and silicone rubber for smoothest handling properties.



## Elastech plus

Vulcanised elastic rubber for high performance.



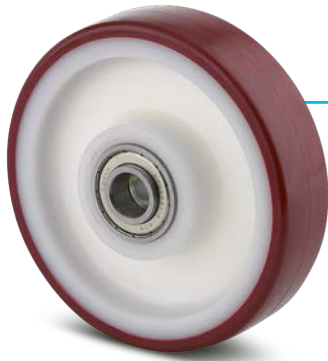
## Duratech

Stable and indestructible, made of polyamide and thermosetting plastic.



## Duratech load

Extra stable and indestructible, made of extra strong polyamide and thermosetting plastic.



#### • **Maxtech**

Perfect for functional design, injection-moulded polyurethane.

**ELECTRIC  
CONDUCTIVE**



#### • **Maxtech conductive**

Solid injection-moulded polyurethane wheel for long-lasting use in different shore hardnesses. Sealed stainless steel bearing.



#### • **Novatech**

Highly resilient classics with cast polyurethane coating. Also available with convex tread.

**PREMIUM  
QUALITY**



#### • **Ultratech**

Outstanding performance through premium polyurethane. Also available with convex tread.








#### • **Highly customisable wheels**

Our casted polyurethane wheels are highly flexible to adapt them to your needs. The shore hardness of the tread and the shape can be customised. Use convex treads for added manoeuvrability or flat ones for better traction.

## Technical data and availability





EXTRA  
STABLE

						
Description	Product name	Elastech plus	Elastech plus	Duratech	Duratech	Duratech load
	Article description	IEP, IFP, ILP, IYP	SEP, SFP	UOO	UOP	TOO, TOP
	Tread material	Vulcanised elastic rubber in grey (non-marking) or black	Vulcanised elastic rubber in grey (non-marking) or black	Polyamide	Polyamide	Polyamide, heavy duty
	Tread hardness	Shore A 67	Shore A 67 ±3	Shore D 75	Shore D 75	Shore D 75
	Wheel body material	Aluminium	Welded steel	Polyamide	Polyamide	Polyamide
	Temperature range	-20 °C / +85 °C	-20 °C / + 80 °C	-40 °C / +80 °C	-40 °C / +80 °C	-40 °C / +80 °C
	Width of tread / Wheel diameter in mm	50 mm / Ø 125 - 200	50 mm / Ø 160 - 200	43 mm / Ø 125 40 mm / Ø 160 50 mm / Ø 200	46 mm / Ø 125 50 mm / Ø 200	50 mm / Ø 125 - 160
	Antistatic	Optional	-	-	-	-
	Electric conductive (10 <sup>4</sup> OHM)	Optional	-	-	-	-
	Washable	-	-	-	-	-
Bearing type	Plain bearing	-	-	●	-	●
	Roller bearing	-	-	-	-	-
	Cone ball bearing	-	-	-	-	-
	Precision ball bearing	●	●	-	●	●
Load capacity	Wheel Ø 125 mm Single wheel	300 kg	-	-	-	600 kg
	Wheel Ø 125 mm Twin wheel	600 kg	-	750 kg	750 kg	-
	Wheel Ø 160 mm Single wheel	350 kg	540 kg	500 kg	-	600 kg
	Wheel Ø 160 mm Twin wheel	700 kg	-	750 kg	-	-
	Wheel Ø 200 mm Single wheel	450 kg	600 kg	600 kg	600 kg	-
	Wheel Ø 200 mm Twin wheel	750 kg	-	750 kg	750 kg	-

Items with this sign "●" are available. Items with this sign "-" are not available in our standard range. Please contact us.

The mentioned load capacity is only valid for the Delta product family. The load capacity of a single wheel without housing could be different.

\* 300 kg with Shore A 85 and 350 kg with Shore A 95.

							
		ELECTRIC CONDUCTIVE				PREMIUM QUALITY	
Maxtech	Maxtech conductive	Novatech	Ultratech				
UAP	USC	ITP	ICP				
Polyurethane, injected	Polyurethane injected	Polyurethane, casted	Premium polyurethane, casted				
Shore A 92	Shore A 85 or A 95	Shore A 92 or A 80	Shore A 75 or A92				
Polyamide	Polyamide, injected	Aluminium	Aluminium				
-40 °C / +80 °C	-40 °C / +80 °C	-20 °C / +60 °C	-20 °C / +60 °C				
40 mm / Ø 160 50 mm / Ø 200	40 mm / Ø 200	50 mm / Ø 125 - 200	50 mm / Ø 125 - 200				
-	-	Optional	-				
-	●	-	-				
-	●	-	-				
-	-	-	-				
-	-	-	-				
-	-	-	-				
●	● Sealed, stainless steel	●	●				
300 kg	-	500 kg	500 kg				
-	-	750 kg	750 kg				
350 kg	-	600 kg	600 kg				
-	-	750 kg	750 kg				
500 kg	300 kg - 350 kg*	600 kg	600 kg				
-	-	750 kg	750 kg				

## Bearing types



Plain bearing for short distances.



Precision ball bearing for highest performance.

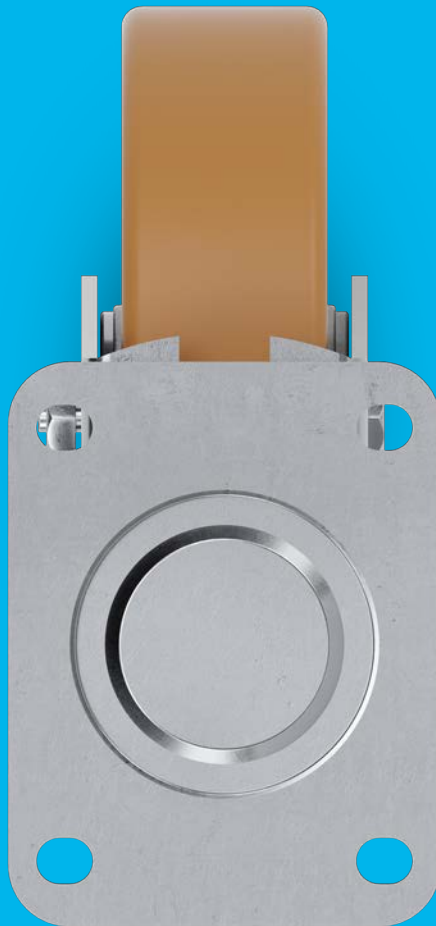


## Load capacity

The load capacity depends on the housing and wheel. It has been tested and fulfills the requirements according to EN 12532 at a speed of 4 km/h and EN 12533 at a speed of 6 km/h. When using four castors, you can calculate the necessary load capacity as follows: The sum of the weight of your application plus the additional load divided by three castors.

$$\frac{\text{Weight of application + load}}{3} = \text{Load capacity of one castor}$$

# FITTINGS





# FEATURES



## Standard fittings

Plate fittings are made according to industrial standards.



## Customised fitting sizes

Plate fitting size on request.

# ADDITIONAL FEATURES



## Tested quality

Tested in our own laboratory for compliance with European standards.



## Customised castors

High possibility to develop customised solutions.



## Colour matching

Colours can be adapted to match the product design.



## Non-hazardous materials

Complies with the RoHS directive and REACH regulation of the European Union. Does not contain polycyclic aromatic hydrocarbons or chromium (VI).



## Comfortable handling

These wheels allow you to easily pass obstacles.

# PLATE FITTINGS

Secure connection with four screws. For a long-lasting and maintenance-free use, the plate fittings of the Delta product family are equipped with a lifetime greased and sealed precision ball bearing.



## Highest load capacity and low height

Combination of three swivel castors for an easy manoeuvrability of heavy loads, even in tight spaces. Various wheel models and sizes are available upon request.

## Technical data and availability

Description	i	Fitting type				
			Swivel plate	Swivel plate with central wheel brake	Fixed plate	Fixed plate
			Single wheel and twin wheel	Single wheel	Single wheel	Twin wheel
			P63	P67	P63	P63
			137 x 105 mm	142 x 110 mm	137 x 115 mm	137 x 137 mm
			105 x 80/75 mm	105 x 77,5 mm	105 x 80/75 mm	105 x 80/75 mm
Overall height		Plate hole $\varnothing$	11 mm	13 mm	11 mm	11 mm
			Wheel $\varnothing$ 125 mm	178 mm	-	178 mm
			Wheel $\varnothing$ 160 mm	210 mm	225 mm	210 mm
			Wheel $\varnothing$ 200 mm	250 mm	265 mm	250 mm

Items with this sign "-" are not available in our standard range. Please contact us.

# ACCESSORIES

For all single wheel castors we offer suitable accessories like the elastic foot protection and the technical components for central locking.

## Foot protection



Description	<b>i</b> Article description	Foot protection
	Compatible with	Single castors
	Temperature	-20 °C / +60 °C
	Width	151 mm
	Ground clearance	19 mm
	Hardness of rubber flap	Shore A 75
Weight	Wheel Ø 125 mm	0,54 kg
	Wheel Ø 160 mm	0,67 kg
	Wheel Ø 200 mm	0,75 kg
Length	Wheel Ø 125 mm	185 mm
	Wheel Ø 160 mm	220 mm
	Wheel Ø 200 mm	260 mm

## Profile bar for central locking



Description	<b>i</b> Article description	Profile bar
	Compatible with	Single wheel castors with central wheel brake
	Material	Steel
	Lengths	Up to 3 m
	Profile bar	11 mm hex
	Adjustment range of the brake pad	10 mm

## Foot pedal for central locking



Description	<b>i</b> Article description	Foot pedal
	Compatible with	Profile bar
	Material	Steel
	Measurements	70 x 94 mm



• Example of a mounted foot protection



• Example of mounted central locking components

# DIVERSITY WITH A SYSTEM

## OUR CASTORS

All of our products have their own specific qualities and strengths. Whether it's high design standards, specialist applications or exceptional load capacities – our range can meet your needs and can be adapted to fit different models.

From the correct dimensions and technical specifications to the required configuration, our product families are able to offer the ideal solution – whatever you need. Contact us for more information or visit our website: [www.tente.com](http://www.tente.com)

E-Drive



⌀ 125 mm

Alpha



⌘ 70 - 500 kg  
⌀ 80 - 200 mm

Delta



⌘ 300 - 600 kg  
⌀ 125 - 200 mm

Delta twin



⌘ 600 - 750 kg  
⌀ 125 - 200 mm

Zeta



⌘ 300 - 800 kg  
⌀ 125 - 250 mm

Kappa



⌘ 300 - 2.000 kg  
⌀ 80 - 300 mm

Kappa flex



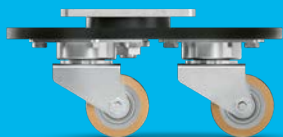
⌘ 360 - 750 kg  
⌀ 160 - 200 mm

Omikron



⌘ 900 - 11.000 kg  
⌀ 100 - 500 mm

Radiata



1.200 - 1.500 kg  
80 mm

Scout



150 - 350 kg  
160 - 200 mm

Integral



100 - 150 kg  
100 - 200 mm

Integral twin



125 - 250 kg  
100 - 150 mm

Linea clinic



150 - 200 kg  
125 - 150 mm

Aviana care



100 kg  
75 mm

Aviana



75 mm

Agila



40 - 100 kg  
50 - 150 mm

Agila twin



50 - 100 kg  
50 - 75 mm

Stora



60 - 160 kg  
75 - 160 mm

Mono



30 - 70 kg  
50 - 100 mm

Galea



60 - 100 kg  
100 - 125 mm

Levina



60 - 100 kg  
75 - 150 mm

Linea



40 - 150 kg  
50 - 150 mm

Anika



40 - 50 kg  
55 - 75 mm

Lumina



30 - 100 kg  
35 - 75 mm

Stylea



40 - 100 kg  
35 - 100 mm

Smiles



40 kg  
50 mm

Compacta



10 - 55 kg  
14 - 50 mm

# EXPERTISE THAT INSPIRES

## CONTACT US

We are a globally operating company supporting you on five continents. This means on-site support with service on a level playing field – along with in-depth knowledge. Additionally, our solution experts will advise you on the best mobility concept for your needs. Go here to find your nearest TENTE location: [www.tente.com/locations](http://www.tente.com/locations)

## INCREASE YOUR EFFICIENCY

Our intelligent mobility solutions help you save time, effort, energy, and operating expenses. This allows you to improve your operating methods and working conditions, thereby optimising your processes and ensuring higher productivity, profitability and safety. Ask for our solutions catalogue or read about how our customers benefit from our tailor-made solutions on our website: [www.tente.com/solutions](http://www.tente.com/solutions)

## SAVE DEVELOPMENT TIME

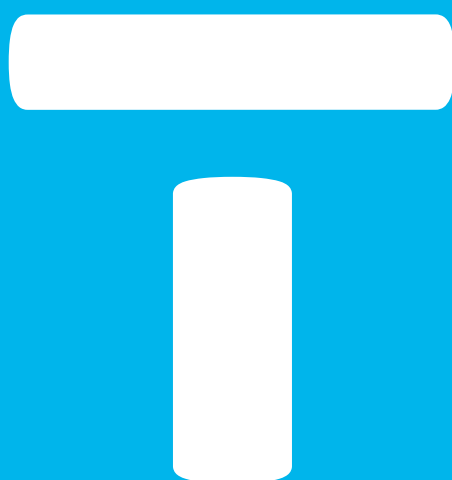
On our website you will find technical drawings, product data sheets and 2D and 3D CAD files in various formats: [www.tente.com/delta](http://www.tente.com/delta)

## GET MORE INFORMATION

In addition to our informative website, you can easily download various catalogues and brochures on mobility solutions, customer references, and much more: [www.tente.com/download](http://www.tente.com/download)







[www.tente.com](http://www.tente.com)



PRODUCTIVITY



SAFETY



DESIGN



DURABILITY



ENVIRONMENT