



SANY

SY870H

Mining Excavator

MOVING TOMORROW, TODAY!



SELLING POINTS

● Excellent performance

With constant oil consumption and 10% - 25% efficiency improvement, the efficiency and oil consumption have surpassed the competitive brands; with 5.0/5.4m³ large capacity bucket, the excavation efficiency has been greatly improved; with the optimization of working devices and the addition of pressurization mode, the excavation capacity of the whole machine has been greatly improved to fully meet the requirements of mine operation.

● Excellent reliability

The working device is greatly strengthened to improve the service life under the condition of large bucket capacity; the new design of the structure of the lower carriage adopts the enhanced tensioning device and heavy driving wheel to enhance the operation stability and service life under the adverse conditions;

● Excellent adaptability

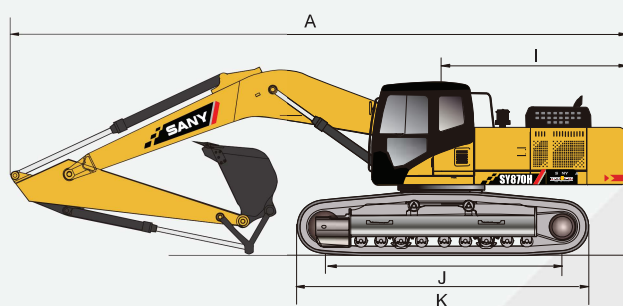
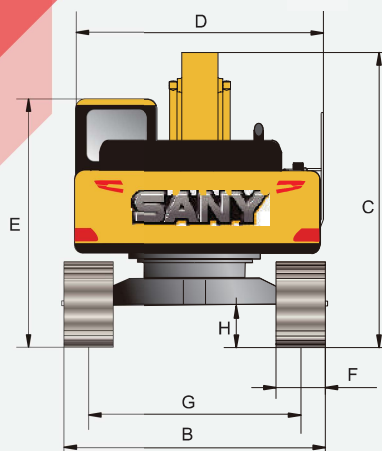
The standard oil bath air filter and large capacity multi-stage filter system provide more effective protection for the engine to meet the operation requirements of the mine under adverse conditions; the independent oil radiator is used to improve the heat dissipation efficiency by 20%, and the adaptability to high temperature environment is greatly improved.

● Humanized configuration

According to the working condition of the mine, the structural strength of the cab is increased by 5 times, the noise is reduced by 5 dB, the safety and comfort of operation are greatly improved; the replacement of maintenance parts is convenient, the maintenance period is extended by 1 time, and the maintenance cost of products is reduced by 50%.

Overall dimensions (mm)

Standard



	SY870H
A. Overall length (in transportation state)	13002
B. Overall width	4320
C. Overall height (in transportation state)	4742
D. Upper width	3460
E. Overall height (cab top)	3795
F. Width of standard track shoe	650
G. Track gauge (operation/transportation)	3380/2780
H. Minimum ground clearance	880
I. Slewing radius of tail	4220
J. Ground contact length of track	4770
K. Track shoe length	5946

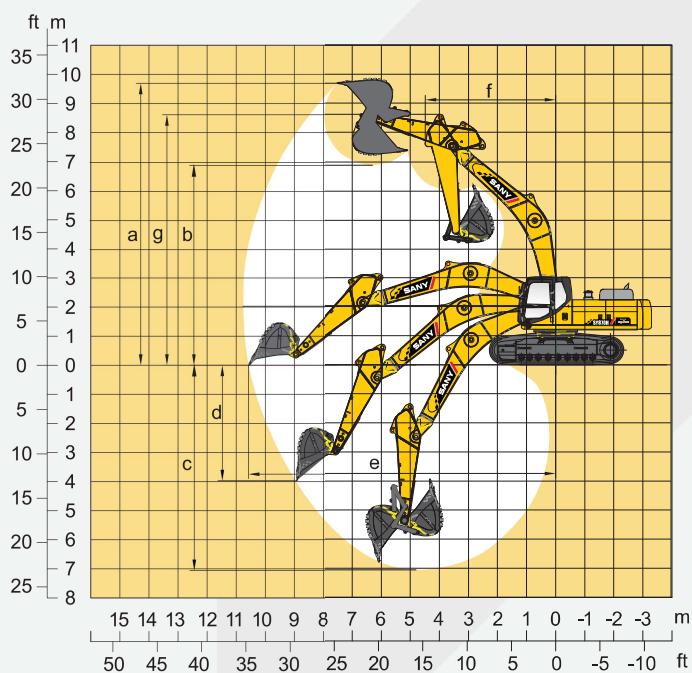
Performance parameters

Standard

	SY870H
Total weight, kg	78600
Bucket capacity m ³	5.0/5.4
Rated power, kW/rpm	377/1800
Traveling speed (high/low), km/h	4.5/2.9
Slewing speed, rpm	7.7
Gradeability	70%/35°
Ground pressure, kPa	114
Digging force of bucket, kN	432/469
Digging force of bucket rod, kN	370/402

Operating range (mm)

Standard



	SY870H
a. Maximum digging height	10910
b. Maximum unloading height	7047
c. Maximum digging depth	7247
d. Maximum digging depth with vertical boom	6792
e. Maximum digging distance	11703
f. Minimum slewing radius	5586
g. Maximum height at minimum slewing radius	9802

Note

The documents and technical specification will be changed without further notice due to continuous technical improvement.
The machine in the picture might include additional equipment.