



## 35 Years of Excellence in Waterproofing

For over 35 years, Projex Group has been Australia's trusted partner in waterproofing solutions. Since 1989, our Wolfin Waterproofing Membrane has set the benchmark for quality and durability, establishing us as a pioneer in the industry. Today, we're more committed than ever to pushing the boundaries of excellence in waterproofing.



### **WOLFIN:** The Industry Leader in PVC Waterproofing

Wolfin is renowned as the most advanced and effective polyester PVC waterproofing membrane in Australia, delivering unmatched performance in challenging conditions. Projex Group is the only provider in the market offering a **15-year warranty** that covers both **workmanship and materials**. This warranty reflects our commitment to the quality and longevity of Wolfin, providing our clients with unparalleled peace of mind.



#### Australia's Only Waterproofing Warranty Covering both Workmanship and Material

Our unique warranty on Wolfin membranes is exclusive in the Australian market, covering both materials and workmanship for 15 years. This means our customers receive complete protection and assurance that their waterproofing system will stand the test of time.

### **Cosmofin:** Proven Performance and Versatility

Our cost-effective Cosmofin system offers a versatile and robust solution designed to handle a wide range of waterproofing needs. Like Wolfin, Cosmofin demonstrates outstanding durability, flexibility, and adaptability to complex installation environments, making it a top choice for professionals across the industry.

### Let's Build a Watertight Future Together

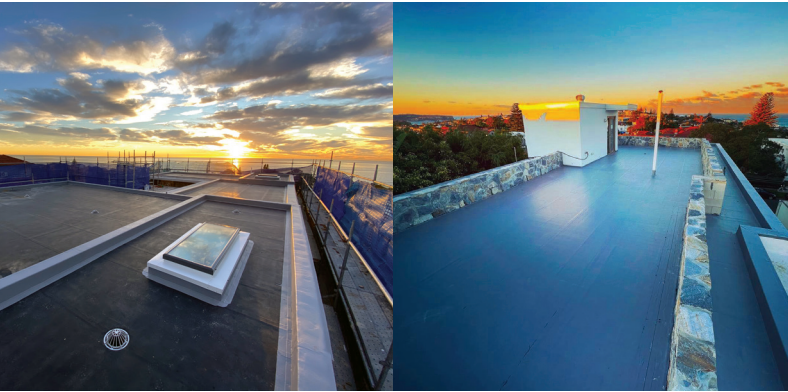
Benefit from 35 years of Projex Group's unparalleled expertise in waterproofing and discover how Wolfin and Cosmofin systems can protect your projects and stand the test of time.



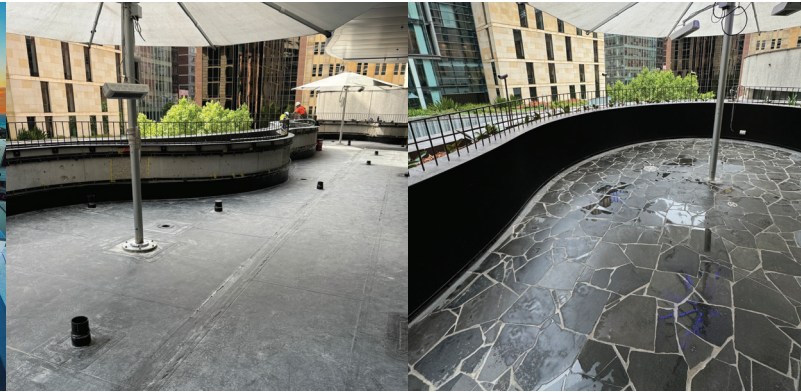
# Reliable Waterproofing Solutions for New and Remedial Projects

Wolfin and Cosmofin PVC sheet membranes are engineered to handle a variety of applications, making them the ideal choice for both simple and complex waterproofing designs. Here are some common areas where Wolfin and Cosmofin excel and can protect your projects:

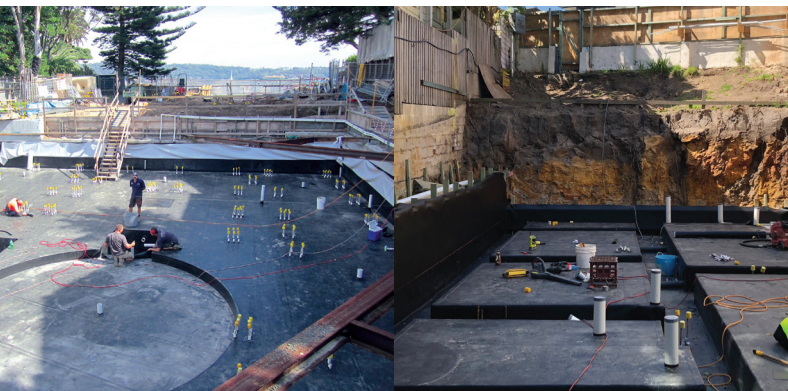
## Rooftop Waterproofing



## Balconies & Terraces



## Basements & Foundations



## Podiums & Landscaped Areas



## Why Choose Projex Group?

- **Australia's Leading Warranty:** Our exclusive 15-year warranty on Wolfin covers both materials and workmanship, offering complete peace of mind.
- **Unmatched Expertise:** 35 years of industry experience delivering high standard waterproofing solutions.
- **Proven Systems:** With Wolfin and Cosmofin, we deliver custom waterproofing solutions that are versatile and adaptable for complex applications.
- **Dedicated Support:** From design stage through to installation and beyond, our team is committed to offering expert advice... Completely Free!

Ready to start your next project with confidence?

Scan the QR code to learn more or reach out to our team today!



## Contact Details

Phone: 02 8336 1666 | 1800 001 114 | Email: [mail@projex.com.au](mailto:mail@projex.com.au) | Website: [www.projex.com.au](http://www.projex.com.au)

 [projex group](https://www.linkedin.com/company/projex-group)  [projex\\_group\\_solutions](https://www.instagram.com/projex_group_solutions)  [projexgroupsolutions](https://www.facebook.com/projexgroupsolutions)