

eIVP1570DE-CB

NVIDIA Jetson Nano AI Network Video Recorder
Supporting 8-Channel PoE IP Cameras



Features

- AI Network video recorder platform
- Quad-core ARM® Cortex®-A57 MPCore processor
- NVIDIA Maxwell™ architecture with 128 NVIDIA CUDA® cores
- Onboard 4 GB 64-bit LPDDR4 memory
- Supports 8 PoE ports
- Supports one HDMI display output
- Supports Ethernet x 9 ports (PoE x 8, GbE x 1)
- Supports ONVIF 2.0, 2MP IP camera up to 8 channels
- Supports AI functions
- CE, FCC certified

Note: SOM needs to be purchased separately



AI NVR (AI Network Video Recorder)

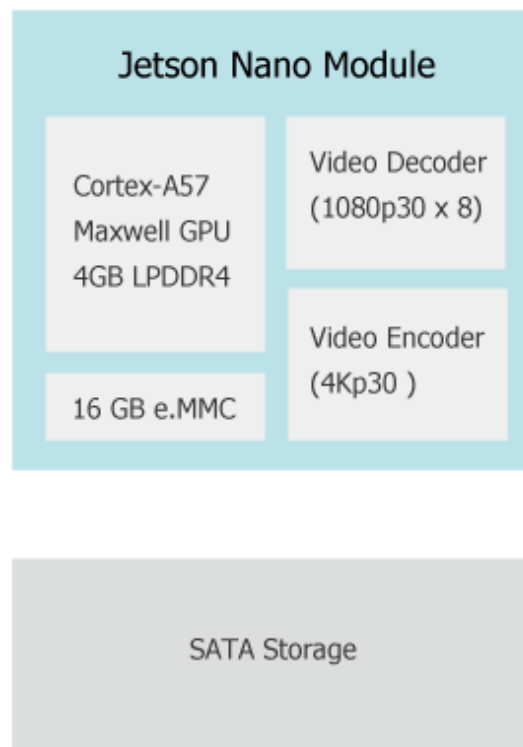
EverFocus Video Analysis AiO Platform

Nvidia SDKs

- JetPack
- DeepStream
- TensorRT
- CUDA
- Video CODEC
- Image Processing
- cuDNN

EverFocus Board Support Package

- HDMI x 1
- USB 3.0 x 1
- USB 2.0 x 2
- GbE (RJ45) x 1
- RS-485 x 1
- RS-232 x 1
- Micro USB 2.0 x 1
- 40 Pins Expansion Header
- Mic & Speaker



10 /100 MbE with PoE x 8

Power



Specifications

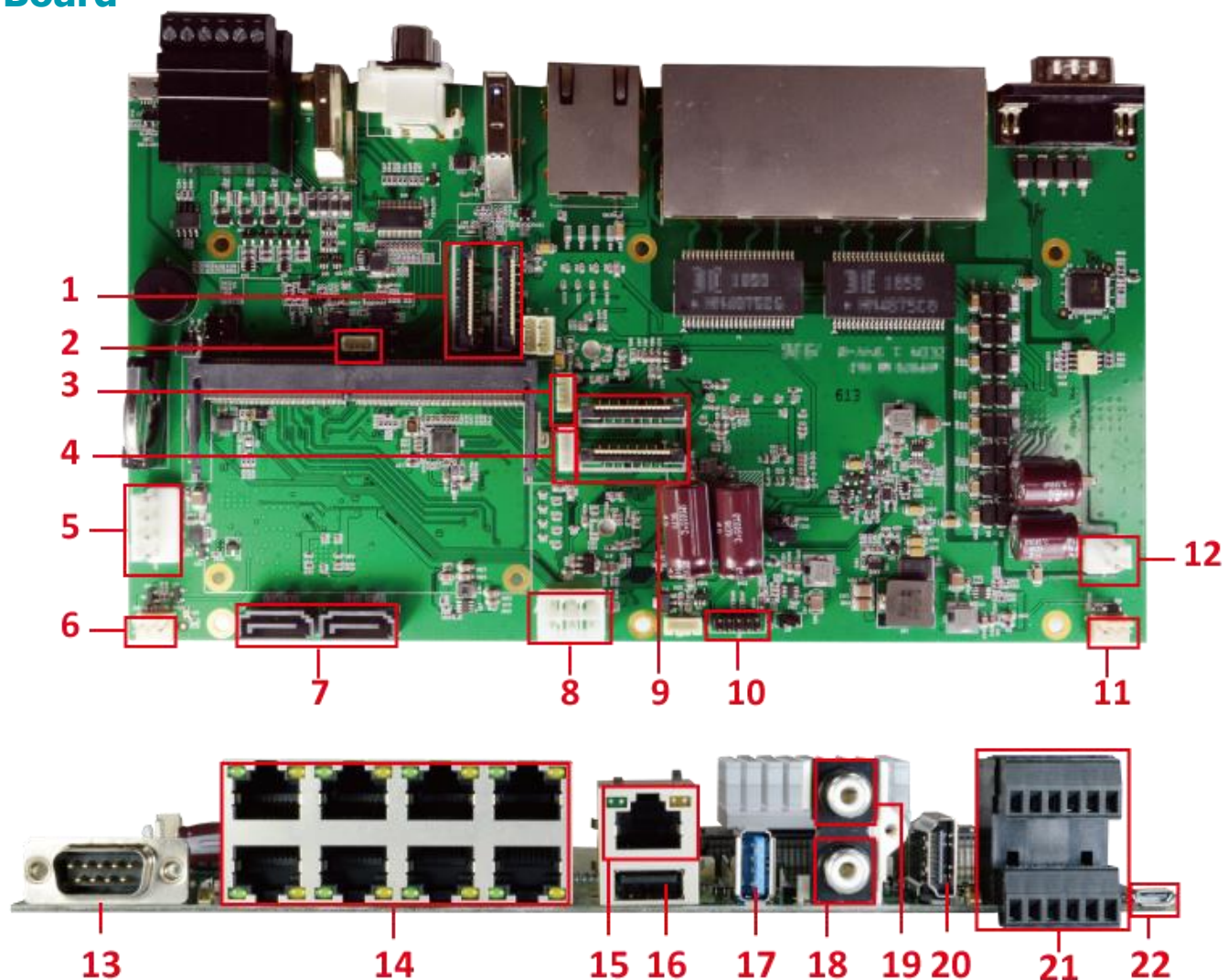
Model No.		eIVP1570DE
System	CPU	Quad-core ARM® Cortex®-A57 MPCore processor
	GPU	NVIDIA Maxwell™ architecture with 128 NVIDIA CUDA® cores
	Main Memory	Onboard 4 GB 64-bit LPDDR4
	OS	16 GB eMMC
Video	Format	H.265 / H.264
	Video Input	IP camera x 8
	Video Output	HDMI x 1 (2.0 a/b maximum 3840 x 2160); VGA x 1 (optional)
	Resolution	1 x 4K @ 60fps 2 x 4K @ 30fps 8 x 1080p @ 30fps
Audio	Audio Input	RCA x1
	Audio Output	RCA x1
Recording	Format	H.265 / H.264
	Resolution	1 x 4K @ 60fps 2 x 4K @ 30fps 8 x 1080p @ 30fps
Storage	2.5" SATA HDD	SKU1/SKU3: x 1; SKU2/SKU4: x 2
	Removable SSD Tray	NA
	RAID	NA
Network	Ethernet	GbE port x1, PoE port (10/100 MbE, 52V/2.5A, total 130W based) x 8
	Wi-Fi	NA
	3G / 4G	NA
	GPS / G-Sensor	NA
Alarm	Alarm Input	Alarm Input x 4
	Alarm Output	Alarm Output x 4
Interface	Front I/O Panel	LED indicator x 2 (HDD, power) Power button x 1 USB 2.0 x 1
Interface	Rear I/O Panel	USB 3.0 x 1, USB 2.0 x 1, Micro USB 2.0 (Internal OTG) x 1 RS-485 x 1, RS-232 x 1 GbE port x 1, PoE port x 8 Audio in x 1, Audio out x 1 HDMI x 1; VGA x 1 (optional) Power switch x 1, Power input port x 1 Alarm IO (4-input, 4-output) x 1
	Expansion Slot	NA
General	Power Supply	SKU1/SKU2: AC100-240V, 180W ATX SKU3/SKU4: DC48V, 2.5A, 120W
	Dimensions (W x D X H)	314 x 282.2 x 49.6mm (12.4" x 11.1" x 2")
	Gross Weight	SKU1: 3kg / 6.6lb; SKU2: 3.1kg / 6.8lb SKU3: 2.5kg / 5.5lb; SKU4: 2.6kg / 5.7lb
	Operating Temperature	32°F ~104°F (0°C ~+40°C)
	Storage Temperature	-4°F ~185°F (-20°C ~+85°C)
	Storage Humidity	95% @ 40 °C (non-condensing)
	Vibration/Shock	0.25 Grms @ 5 ~ 500 Hz, random, 1 hr/axis
	Certification	CE, FCC

Note: All specifications are subject to change without notice.

eIVP1570DE-CB

NVIDIA Jetson Nano Carrier Board

Carrier Board



eIVP1570DE-CB			
1	MIPI	12	PoE Power
2	Console	13	RS232
3	USB2.0	14	10/100 Ethernet PoE ports x 8
4	VGA	15	GbE LAN
5	HDD Power	16	USB2.0
6	Fan	17	USB3.0
7	SATA Port x 2	18	Audio In
8	12VDC in put	19	Audio Out
9	MIPI	20	HDMI
10	Front Panel Button	21	Alarm IO (4-input, 4-output); RS485
11	Fan	22	OTG