

EC450AJ Gen.2

ELECTRIC ARTICULATING



KEY SPECS

Working Height
15.72 m

Platform Capacity
250 kg

Horizontal Outreach
7.62 m

Drive Speed
4.8 km/h

KEY FEATURES

- ▀ Electric motor and battery technology for zero emissions and low noise
- ▀ Conquer rough terrain with standard oscillating axle delivering optimized grip and stability
- ▀ Save time thanks to very fast charging (~3.5 hrs- depends on battery stack size)
- ▀ Reduce maintenance with Dura Tough gull-wing turntable hood and chassis embedded lithium batteries for optimal component protection
- ▀ Zero emissions allowing you to work in low emission zones- indoor and outdoor

ACCESSORIES & OPTIONS

- ▀ Lithium Battery extension up to 20KW/400Ah total
- ▀ Arctic Hydraulic Oil
- ▀ Hot weather package for 2WD machines (STD with 4WD option)
- ▀ 0.76 m x 1.52 m Self closing inward swing gate
- ▀ Platform Worklights
- ▀ Hydraulic Oil Heater
- ▀ 13 mm air line to platform
- ▀ Head & Tail Lights
- ▀ Hostile Environment Kit **
- ▀ 4 Wheel Drive System (4 independent AC-Motors) including Hot Weather Package
- ▀ Skyguard beacon (ILOS)
- ▀ Ambient Light for Platform and Ground Controls (coming soon)
- ▀ Euro Plug & Socket
- ▀ All motion alarm (white noise)
- ▀ Arctic Hydraulic Oil
- ▀ Platform Worklights
- ▀ Head & Tail Lights
- ▀ Skyguard beacon (ILOS)
- ▀ All motion alarm (white noise)
- ▀ Euro Plug & Socket
- ▀ Special paint colour
- ▀ Foam filled 315/55 D20 Tires
- ▀ FF 315/55 D20 Tires - Black rubber

STANDARD SPECIFICATIONS

Performance

Working Height	15.72 m
Platform Height	13.72 m
Horizontal Outreach	7.62 m
Working Outreach **	8.27 m
Up and Over Height	7.30 m
Swing Non-Continuous	355°
Platform Capacity - Unrestricted	250 kg
Platform Rotator (Hydraulic)	180°
Jib - Overall Length	1.24 m
Jib - Range of articulation	145° (+76°/ -69°)
Machine weight *	6,270 kg
Maximum Ground Bearing Pressure ***	4.0 kg/cm ²
Occupied floor area	7.5 m ²
Drive Speed	4.8 km/h
Gradeability	30%
Turning Radius - Inside	2.06 m

* Certain options or country standards may increase weight and/or dimensions.

** Incl. 0.65 m outreach beyond platform

*** With Standard tires

Power Source

Control System	12 V DC
Power System	51.2 V DC
Batteries	10 KW/200 Ah Lithium-Ion Batteries including BMS and integrated heaters
Drive Motors	2 x AC Motors (4 AC motors with 4WD Option)

Tires

Non Marking	FF 315/55 D20
Brakes	Automatic Spring Applied

Hydraulic System

Hydraulic Motor	DC Electric motor
Hydraulic Pump	Gear Pump
Hydraulic System	30 L

STANDARD FEATURES

- ▀ Multiple function operation
- ▀ Full proportional drive joystick control with integral thumb steer switch
- ▀ Full proportional main boom and swing joystick control
- ▀ Selectable creep speed on drive / lift and swing functions
- ▀ 1.24 m articulating jib
- ▀ Platform console machine status light panel *
- ▀ Platform Load sensing system
- ▀ AC power cable to platform
- ▀ 5 Degree Tilt Alarm/Indicator Light
- ▀ Dura Tough gull-wing turntable hood
- ▀ 12V-DC Auxiliary Power
- ▀ Hourmeter
- ▀ Interactive 4" LCD Display at Ground Controls
- ▀ Control ADE® (Advanced Design Electronics) System
- ▀ 2 wheel independent direct electric AC drive
- ▀ Horn
- ▀ Lifting/Tie Down Lugs
- ▀ Oscillating Front Axle
- ▀ Cast Aluminum Control Box
- ▀ Motion Alarm
- ▀ 355 Degree Non-Continuous Swing
- ▀ 3kW Zivan battery charger
- ▀ Ground control selector switch with key lock
- ▀ Synthetic Biodegradable Hydraulic Oil
- ▀ 48V DC pump motor
- ▀ Flashing Amber Beacon
- ▀ Clearsky SMART FLEET connectivity module - Subscription through On Line Express
- ▀ SkyLine Enhanced protection system

* Provides indicator lights at platform control console for system distress, battery state of charge, 5 degree tilt light, and foot switch status.

** Includes boom wipers, cylinder bellows and console cover.

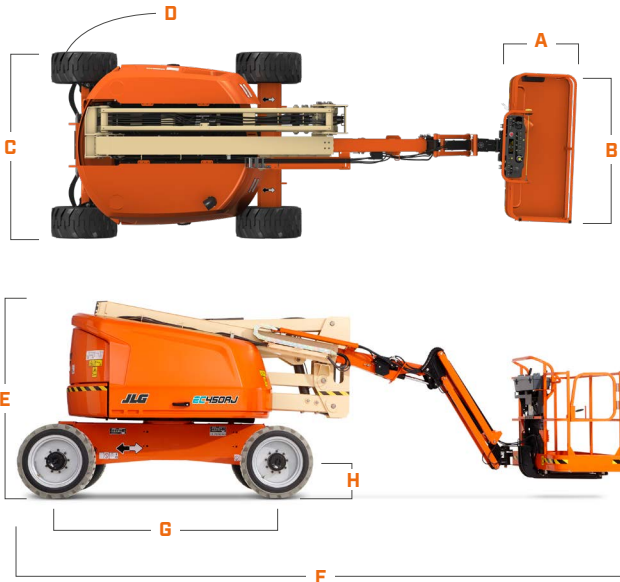
EC450AJ Gen.2

ELECTRIC ARTICULATING



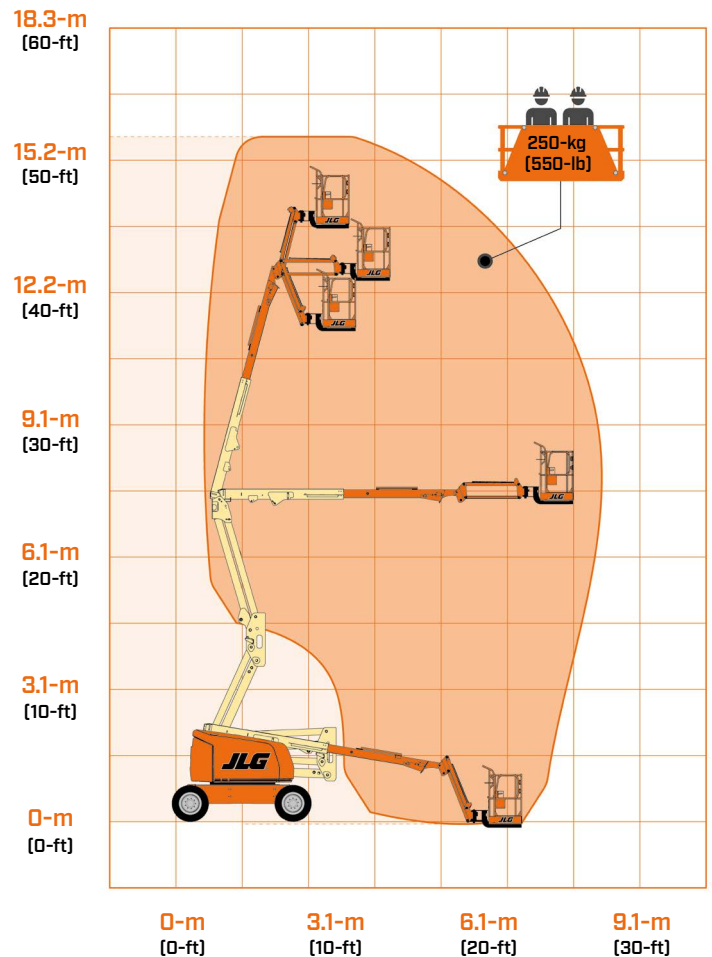
DIMENSIONS

All dimensions are approximate



A. Platform Width	0.76 m
B. Platform Length	1.83 m
C. Overall Width	2.26 m
D. Tailswing (working condition)	Zero
E. Stowed Height	2.27 m
F. Stowed Length	6.58 m
G. Wheelbase	2.36 m
H. Ground Clearance	0.42 m

REACH DIAGRAM



IMPORTANT

JLG is continually researching and developing products and reserves the right to make modifications without prior notice. All data in this document is indicative. Certain options or country standards will increase weight. Specifications may change to meet country standards or with the addition of optional equipment.

Due to continuous product improvements, JLG Industries reserves the right to make specification and/or equipment changes without prior notification.



JLG EMEA BV
 Polaris Avenue 63
 2132 JH Hoofddorp
 The Netherlands
 Tel.: +31 (0)23 565 5665
www.jlg.com

An Oshkosh Corporation Company