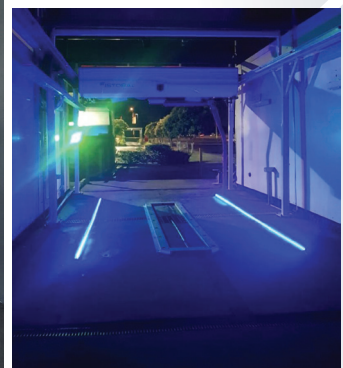


# TRACER OH1 Touchless Car Wash



**The first 100% European brushless wash is based on the American *touchless* high-pressure wash philosophy.**

**The Istobal** Tracer OH1 is an overhead *touchless* wash gantry with a 360 deg rotating arm to apply the specialised chemical products along with the high-pressure water spray.

This unique configuration means that the wash bay area is completely free of obstacles, and thus any type of vehicle can access it with ease and be washed by the user in complete safety.

The Tracer OH1 combines the action of three variable frequency drives to control the speed of linear motion, lateral movement, and rotation of the arm and all these controls, are managed by Istobal's advanced software, resulting in a highly effective and rapid *touchless* wash, which also achieves significant savings when compared to other *touchless* wash systems.

The Tracer OH1 offers a choice of options including:

additional chemical applications, waxes, foams, on-board drying, Infinite Mousse, LED lighting, Under body wash etc...

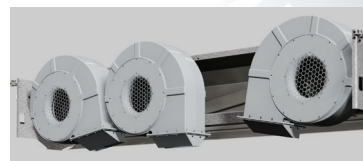
# TRACER OH1

## Touchless Car Wash



### ON-BOARD DRYING

The three 7.5 kW on-board dryer turbines guarantee the best quality wash in the fastest possible time.



### WATER SUPPLY

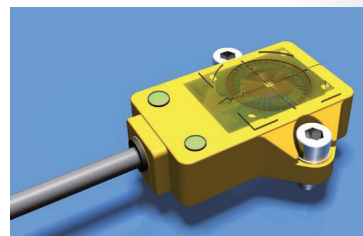
It has a set of 3 pumps giving a flow rate of 126 L at 70 Bar.

A stainless steel Venturi injection system with its own feed water pump.



### TECHNOLOGY

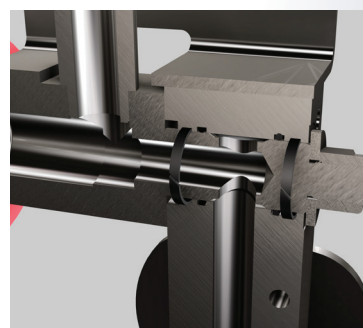
A 360° electronic encoder allows the arm movements to adjust to the movement of the vehicle and to adapt to all types of vehicle. These highly accurate movements throughout the wash process help to minimise the consumption of water and chemical products.



### SAFETY

The wash application system has been specially designed to include a safety system which enables it to avoid obstacles such as wing mirrors or tow bars for trailers which might affect the wash process.

When it finds an obstacle in its path, the safety system will unlock the spray arm and will memorise the exact position of the obstacle to avoid it in subsequent passes.

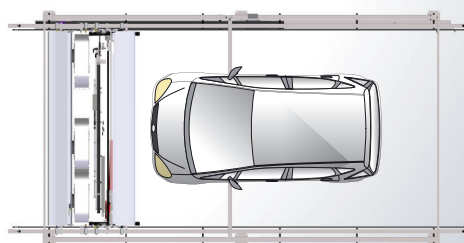


### Dimensions

|  |      |
|--|------|
| Maximum wash height (mm)                   | 2140 |
| Maximum wash width (mm)                    | 2330 |
| Vehicle length (mm)*                       | 6400 |
| Vehicle length with on-board drying (mm)** | 6500 |

\* With 8250 mm guides.

\*\* With 9250 mm guides.



**Contact us now to find out more!**

**Call - 02 9757 4700**

Website - [www.goodsight.com.au](http://www.goodsight.com.au)

Email - [sales@goodsight.com.au](mailto:sales@goodsight.com.au)