

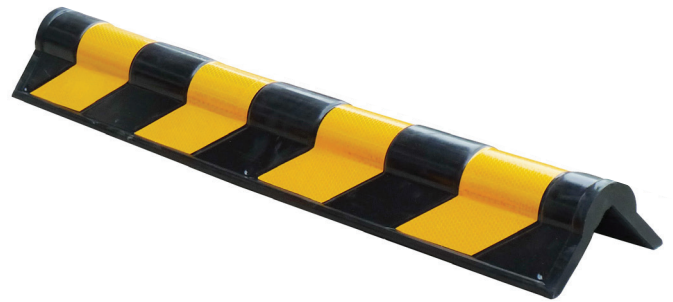
## ROUND NOSED CORNER PROTECTOR

Particularly suited to multi-level & underground car parks where column protection is required. Also suitable to protect warehouses and commercial properties from moving trolleys, dock bays and doors and anywhere there is high traffic and possible risk of damage to buildings.



### Features

- Corner Protectors are manufactured from high impact natural rubber
- Corner Protectors are highly reflectorized yellow tape to stand out in basement car parks
- Corner Protectors Install easily with the help of 5mm fixing anchors or adhesive



PRODUCT CODE	LENGTH	INSIDE	WEIGHT	FIXING
CP790	800mm	100mm x 100mm	2.2kg	6 x Nylon Nail-In Anchors M5 x 38mm or adhesive fix

