

A blue and silver Exsto hand truck is shown. It features a large black tire, a blue handle, and a blue frame. The brand name 'Exsto' is visible on the side of the frame. The truck is designed for manual material handling.

DESCRIPTION

With capacity of up to 170Kg, ZW7170G will allow you to transfer awkward cargo up and down stairs with just a single operator. It can carry printers, home appliances, furnitures and other goods without any effort. It can help you save huge labour costs.

Solid tyres with brake, Intensive Aluminum alloy frame, simple touch button control and rechargeable battery, make it to be our best-selling product in Europe.



TECHNICAL DATA

Model: ZW7170G	Main material: aluminum alloy
Net weight: 26.1 kg	Battery type: lithium battery
Weight of Battery : 3kg	Charging Voltage: 100V-240V
Capacity: 170kg	Charging time: 3hours
Battery capacity: 60-135floors	Noise: < 70dB
Climbing Speed: 24steps/min (Slow)	Brake: Yes
34 steps/min (Fast)	Protection level: IP54
Overall Size: 1590mm*545mm*540mm	Fold Size: 1195mm*545mm*308mm

PRODUCT DETAILS



Handle
Rotating operation, adjusting angle, folding, seeking the suitable angle



Run button
Point touch operation button, easy to operate and ensure the safety



Battery
Fast plug design, independent switch to safe, display capacity and voltage

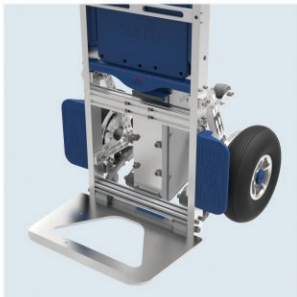


Upstairs/Downstairs Button
Choose the up/down mode
Fast/Slow Button
Choose the speed



Support Wheels
High-abrasive and anti-slip support wheels with polyurethane material

Brake System
Automatic detect staircase edge when downstairs



Loading Board
Foldable loading board, space-saving

APPLICATIONS

