



# LS2

## Low Speed Shredder





LS2 – Processing Stumps



# Compact Low Speed, Twin Shaft Shredder

# Low Speed Twin Shaft Shredding



**Self Protecting drive**

**Unrivalled protection compared to a high-speed grinder or Chipper**

**Compact layout**

**16,500Kg (36,400 lbs)**

**Hook lift Option**

**User friendly control system**

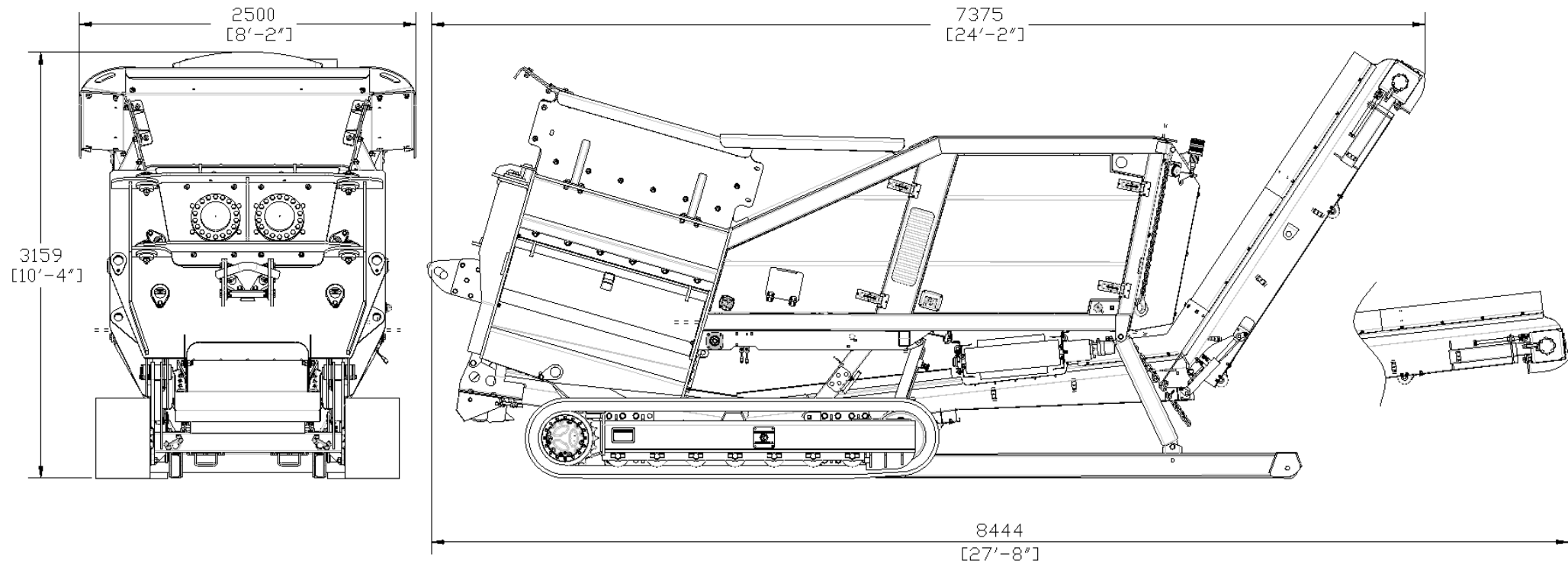
**Volume reduction on**

**Stumps**

**Green Waste**

**Wood Waste**

**Concrete and brick**



### TRANSPORT DIMENSIONS

Width: 2.5m (8' 2")

Height: 3.05m (10')

Length: 8.4m (27' 8")

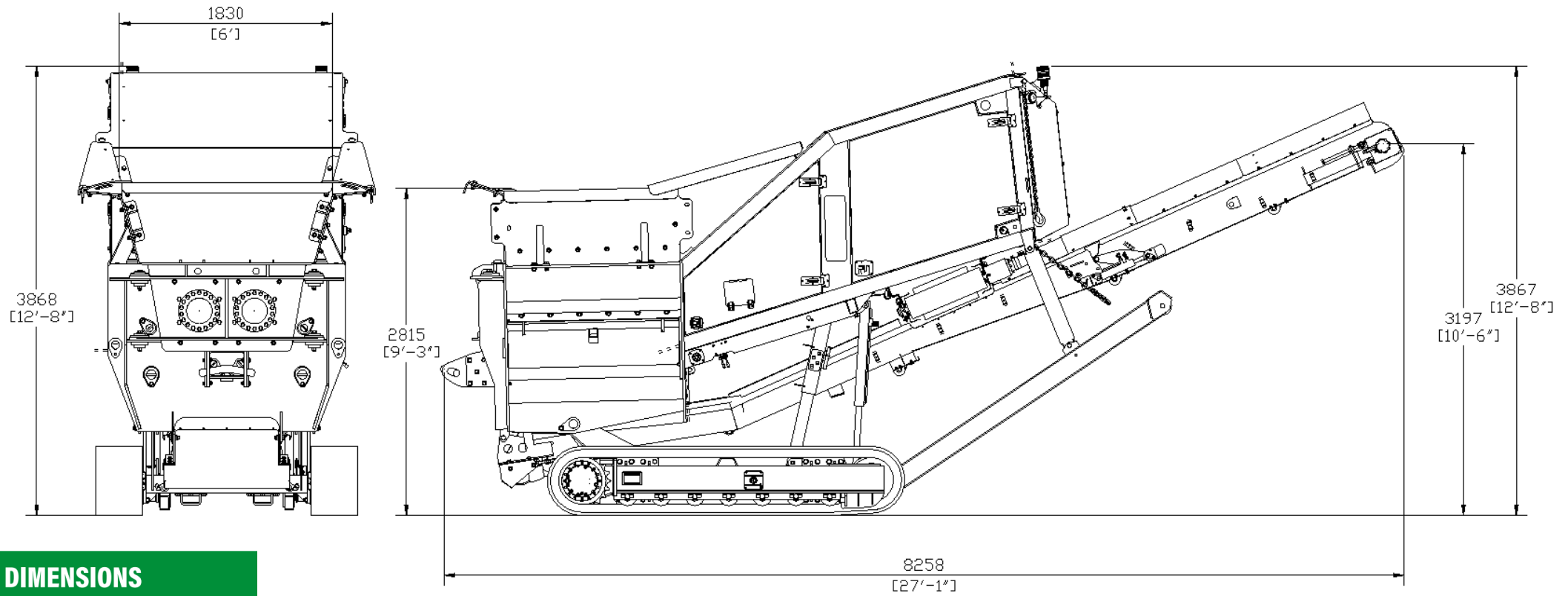
Weight: 16,500kg (36,376 lbs)

### TRANSPORT DIMENSIONS - CONVEYOR FOLDED

Width: 2.54m (8' 4")

Height: 3.16m (10' 4")

Length: 7.4m (24' 2")



## WORKING DIMENSIONS

Width: 2.54m (8' 4")

Height: 3.9m (12' 8")

Length: 8.3m (27' 1")

Chamber feed in height: 2.8m (9' 2")

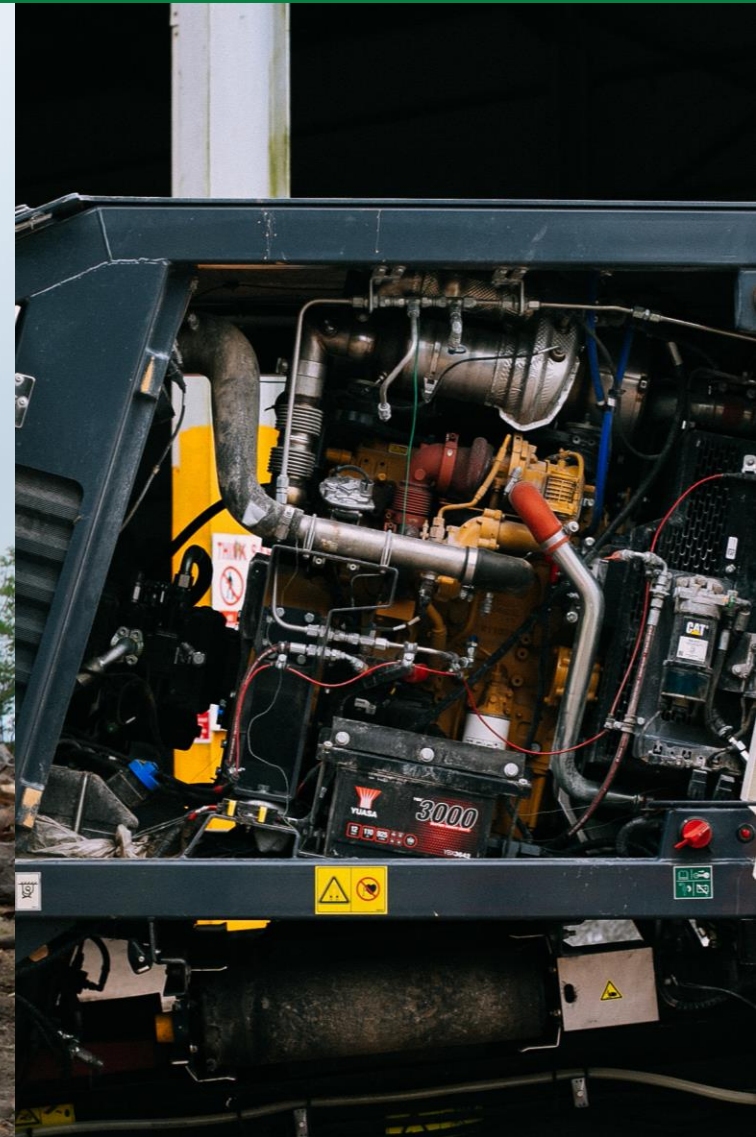
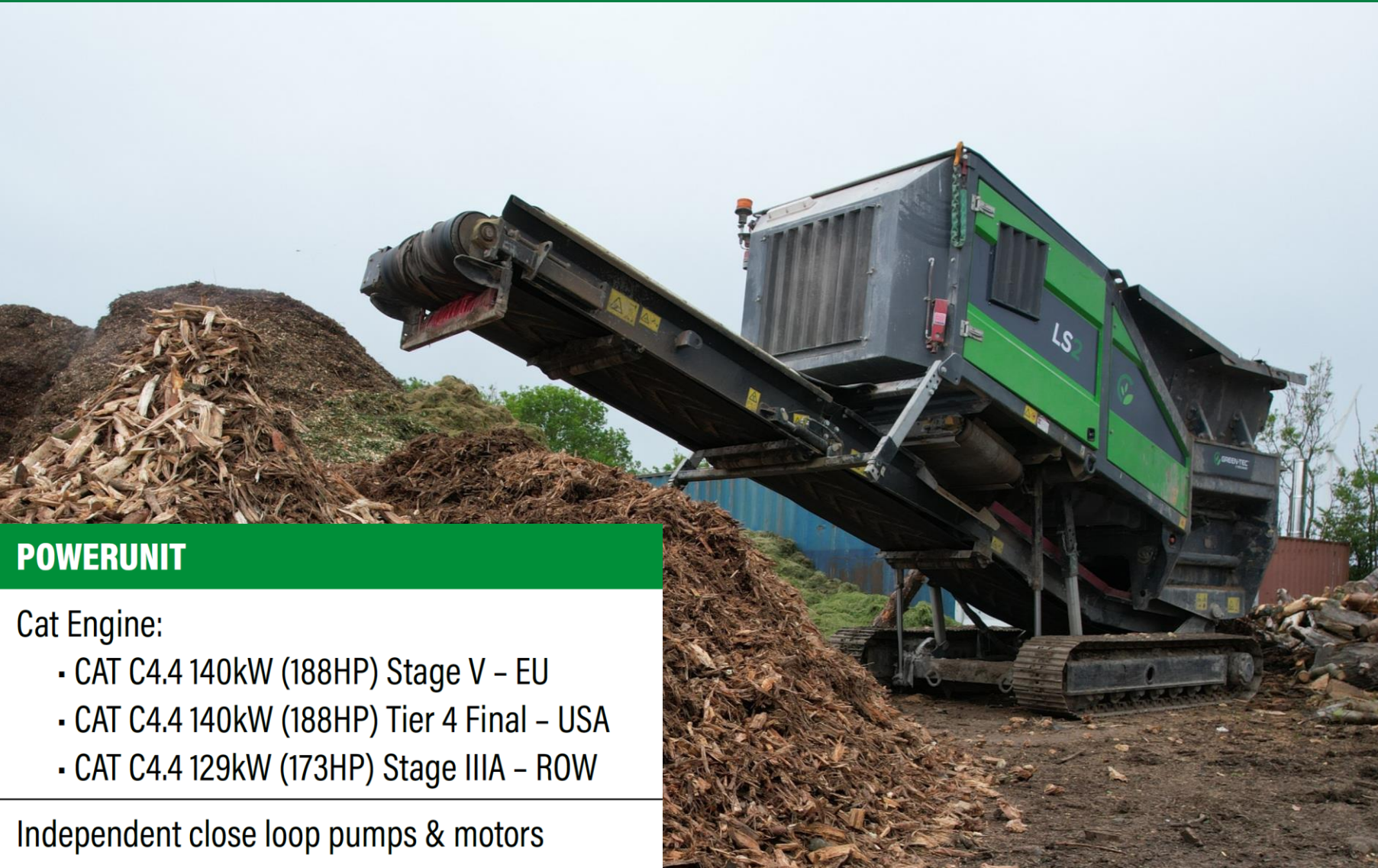


## TRACKED UNDERCARRIAGE

Bolt on tracks

400mm (16") shoe

2500mm (8' 2") sprocket centres



## POWERUNIT

- Cat Engine:
- CAT C4.4 140kW (188HP) Stage V – EU
  - CAT C4.4 140kW (188HP) Tier 4 Final – USA
  - CAT C4.4 129kW (173HP) Stage IIIA – ROW

Independent close loop pumps & motors



## SHREDDING UNIT

Chamber - Twin shaft slow speed shredder & high torque

Shafts synced or independent, dependent upon application

Shaft Length: 1500mm

Shaft Diameter: 250mm

Effective Tool Diameter: 660mm

Various shaft styles

Torque per shaft: 80,000Nm

Quick removal of shafts

Replaceable tooth shafts

Quick removal or comb assembly

Various comb / breaker bar arrangements



## HOPPER

Chamber target area: 1.8mx 2.6m

2.5m<sup>3</sup> capacity



## PRODUCT CONVEYOR - SINGLE PIECE CONVEYOR

Width: 800mm (32")

Max. Belt Speed: 150m/min (490' /min)

Discharge Height: 3.3m (10' 10")

## Shaft options

Welded tools - rubble applications

Welded paddle shafts - General waste & wood

## Comb Aperture Options

200mm x 90mm

200mm x 60mm

## Engine Options

Cat C4.4 Stage V – 140Kw (188Hp) – EU & USA

Cat C4.4 Stage 3A – 129Kw (173hp) – ROW

Volvo D5 under development

## Hook lift Frame for different areas

CHEM standard – UK

DIN Standard – European

ANSI – USA

## Over band Magnet

For removing Steel and other ferrous materials the product as after sheading

## Hydraulic folding Conveyor

Reduces setup time after transport

## Reversing fan

Cleans the engine radiator, reducing the chance of overheating

## Hot climate oils

Different Grade of hydraulic oil that's more suitable to warmer climates

## Different colors

### 1 x Additional shaft cassette c/w bearings

Sits within Chamber to reduce Transport Cost

## Chamber camera

Displayed on the HMI, Aids with shredding program setup

## Dust Suppression system

Chamber spray Bar

Conveyor Spray Bar

When pumped with water it reduces the dust created by the sheading process.

## Track Pads

Flat steel pads

Rubber clip on track pads

Less grip but more suited for concrete yards

## Fully Function Remote

Radio remote that gives Track & Chamber Control

