

# 8680i Smart Wearable – Configuration Guide

8680i Standard or Advanced Ring Scanner



## 8680i Standard – Scanner Only

8680i100-2

Scanner, 1D, 2D (8680i) - Bluetooth Only  
Battery, charger, and wearable attachments sold separately and required for use.

## 8680i Advanced – Scanner Only

8680i103-2

Scanner, 1D, 2D, Bluetooth, WiFi (AU) and Interface Customization (8680i)  
Battery, charger, and wearable attachments sold separately and required for use.

## 8680i Standard

8680i200-2

Scanner, 1D, 2D (8680i) - Bluetooth Only  
Includes EXTENDED battery, triggered ring and strap attachments.  
Charger sold separately and required for use.

## 8680i Advanced

8680i203-2

Scanner, 1D, 2D, Bluetooth, WiFi (AU) and Interface Customization (8680i)  
Includes EXTENDED battery, triggered ring and strap attachments.  
Charger sold separately and required for use.

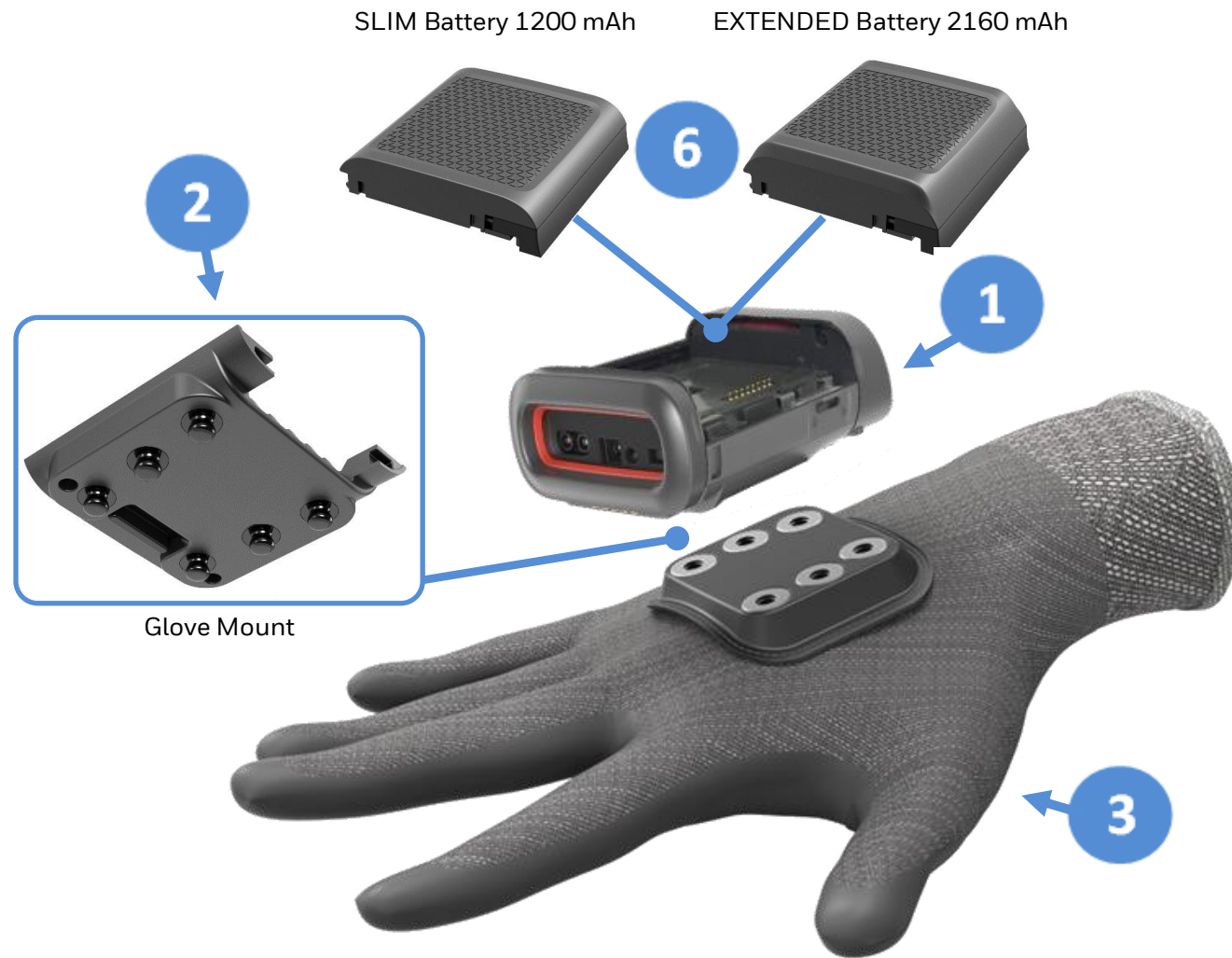
## Honeywell Repair Services

SVC8680i-5LC3

8680i, PLUS, 5 Day Turnaround, 3 Year Day One

# 8680i Smart Wearable – Configuration Guide


8680i Standard or Advanced Wearable Glove



Part#	Description
1 8680i100-2	Scanner Only, 1D, 2D (8680i) – <u>Standard</u>
OR 8680i103-2	Scanner Only, 1D, 2D, WiFi (AU) and interface customization (8680i) – <u>Advanced</u> Battery, charger, and wearable attachments <u>sold separately</u> and required for use.
2 8680i505GMT	Glove mount (package of 10). 8680i gloves purchased separately
3 8680i505RHGS	Glove, <u>SMALL</u> , package of 20 pairs (mount and trigger only on <u>RIGHT</u> hand).
OR 8680i505RHGM	Glove, <u>MEDIUM</u> , package of 20 pairs (mount and trigger only on <u>RIGHT</u> hand).
OR 8680i505RHGL	Glove, <u>LARGE</u> , package of 20 pairs (mount and trigger only on <u>RIGHT</u> hand).
OR 8680i505RHGXL	Glove, <u>EXTRA LARGE</u> , package of 20 pairs (mount and trigger only on <u>RIGHT</u> hand).

Part#	Description
4 MB4-BAT-SCN02	4 BAY 8680I BATTERY CHARGER (Includes Power Supply)
5 **	AC Power Cord – See Page 14 for Country Specific Power Cords
6 BAT-SCN03	SLIM Battery 1200 mAh
OR BAT-SCN02	EXTENDED Battery 2160 mAh

# 8680i Configuration Map

8680i					Description	Notes
Hardware	Scan Engine	Version				
1					Scanner Only	Battery, charger, and wearable attachments sold separately and required for use.
2					Includes extended battery, triggered ring and strap attachments	Charger sold separately and required for use
	0				N6603ER 1D/2D Imager	
		0			Standard	<ul style="list-style-type: none"> <li>- Bluetooth (Classic and LE)</li> <li>- Simple display (connection and battery status, good read)</li> <li>- Focused on straightforward data collection, paired with mobility device or workstation computer</li> </ul> <p>Upgrade License SW-ADV-868013      Standard-to-Advanced software upgrade (AU Only)</p>
		3			Advanced (AU)	<p>Use for Australia/ New Zealand</p> <ul style="list-style-type: none"> <li>- Full customization for display/UI interaction</li> <li>- Wi-Fi capability for standalone operation</li> <li>- Enhanced workflows, either standalone with network application or paired with integrated mobility application</li> </ul>
				—		
				2		

## Honeywell Repair Services

### 8680i – Repair Services

For Best-In-Class Service

With Honeywell Repair Services, it's easy to get the level of repair coverage and protection that makes the most sense for your business. And our repair services are now available in over 70 countries with global pricing and global standards of quality.

Choose from one of our new cost-effective Repair Service contract programs – Complete, Plus or Basic – to get the right amount of coverage and protection you need for your durable, rugged and ultra-rugged products. And for equipment not covered by a contract service plan, you can choose from our Non-Contract Repair Service offerings, which include flat-rate repairs, time-and-materials repairs and more.

#### Plus Repair Services

Protect your technology investment! With Honeywell's 3 and 5 year Plus comprehensive repair services plan, you won't incur any additional costs beyond the plan enrollment for service on covered devices and eligible accessories included with equipment sent to the depot for service. Eligible accessories include damaged styluses, battery-door covers, screen protectors, hand straps and clips.

##### Service Overview

- Features and benefits include:
  - Comprehensive coverage – including device replacement for rugged or stationary products
  - Day One multi-year pricing for lower annualized costs
  - Three years of locked-in service-price protection, with optional renewals
  - Options for 2-day and 5-day service levels
  - Cleaning and preventive maintenance
  - Telephone-based technical support
  - Convenient online Return Authorization requests and access to online service-history reports
  - Plus coverage must be purchased within 30 days of equipment purchase
  - Optional Sentinel Extended Service that protects customers for future security

Part#	Description
SVC8680i-5LC3	8680i, PLUS, 5 Day Turnaround, 3 Year Day One
SVC8680i-5LC5	8680i, PLUS, 5 Day Turnaround, 5 Year, Day One
SVC8680i-2LC3	8680i, PLUS, 2 Day Turnaround, 3 Year, Day One
SVC8680i-2LC5	8680i, PLUS, 2 Day Turnaround, 5 Year, Day One

#### Complete Repair Services

The only contract you will ever need! With Honeywell's 3 and 5 year Complete comprehensive repair services plan, one contract covers it all – device, power management and accessories. Eligible accessories and power management for mobile computers include: batteries, docks, chargers, cradles, cables, damaged styluses, battery-door covers, screen protectors, hand straps and clips.

##### Service Overview

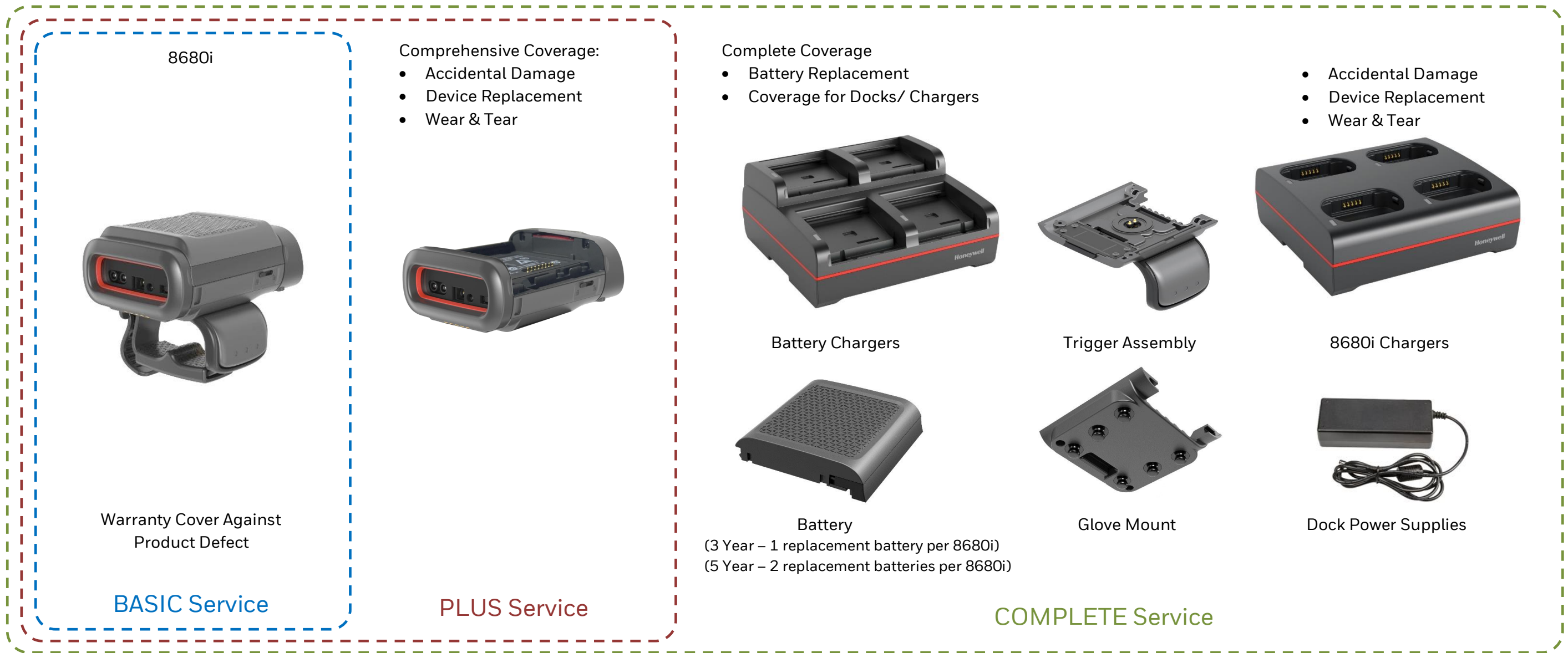
- Features and benefits include:
  - Comprehensive coverage – including device replacement for rugged or stationary products
  - Coverage for power management and select accessories
  - Day One multi-year pricing for lower annualized costs
  - Five years of locked-in service-price protection
  - Options for overnight and 2-day or 5-day service levels
  - Cleaning and preventive maintenance
  - Telephone-based technical support
  - Convenient online Return Authorization requests and access to online service-history reports
  - Complete coverage must be purchased within 30 days of equipment purchase
  - Includes Sentinel Extended Service that protects customers for future security

Part#	Description
SVC8680i-5PS3	8680i, COMPLETE, 5 Day Turnaround, 3 Year, Day One includes coverage for batteries and chargers. APAC only
SVC8680i-2PS5	8680i, COMPLETE, 2 Day Turnaround, 5 Year, Day One includes coverage for batteries and chargers

# Honeywell Repair Services

## 8680i – Repair Services

For Best-In-Class Service



Part#	Description
SVC8680i-EXW3	Bluetooth Imager Ring Scanner, BASIC, 10-15 day turnaround, 3 years (2-year factory warranty + 1-year extended)
SVC8680i-5LC3	Bluetooth Imager Ring Scanner, PLUS, 5-day turnaround, 3-Year Day One
SVC8680i-5PS3	Bluetooth Imager Ring Scanner, COMPLETE, 5-day turn, 3-Year Day One – includes coverage for batteries and chargers. APAC only

## Honeywell Repair Services

### 8680i – Repair Services

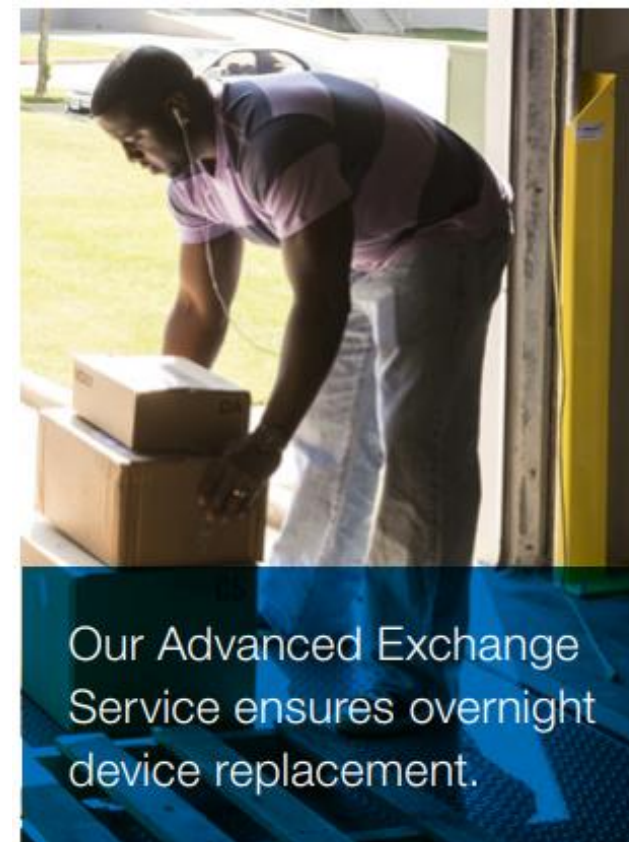
For Best-In-Class Service

#### Advanced Exchange Service: Your Equipment "On Demand"

For overnight replacement of your Honeywell device, upgrade to our Advanced Exchange Service.

- Customer-owned, Honeywell-managed inventory ready for overnight shipment when you need it.
- Ship the damaged device to us; we'll repair it and add it to your Honeywell managed inventory to replace the device we shipped.

Part#	Description
SVC8680i-AELC3	Bluetooth Imager Ring Scanner, PLUS, advanced exchange, customer spares, 3-Year Day One (100-unit minimum). NA and Europe only
SVC8680i-AELC5	Bluetooth Imager Ring Scanner, PLUS, advanced exchange, customer spares, 5-Year Day One (100-unit minimum). NA and Europe only
SVC8680i-AEPS5	Bluetooth Imager Ring Scanner, COMPLETE, advanced exchange, customer spares, 5-Year Day One (100-unit minimum) – includes coverage for batteries and chargers. NA and Europe only.



Our Advanced Exchange Service ensures overnight device replacement.

## 8680i Accessories

### Wearable Accessories

#### Replacement Parts



Part Number	Description
1 BAT-SCN03	SLIM Battery 1200 mAh (Provides 3,000 scans in 8 hours under normal conditions)
2 BAT-SCN02	EXTENDED Battery 2160 mAh (Provides 8,000 scans in 10 hours under normal conditions)
3 8680i505FNGRSTRAP	Two-finger ring strap for triggered configuration (package of 10).
4 8680i505RINGMT	Triggered ring strap mount (package of 10, includes trigger component).

## 8680i Accessories

### Wearable Accessories

#### Replacement Parts



Remove Triggered Ring-Strap Mount

Install Glove Mount

	Part Number	Description
1	8680i505GMT	Glove mount (package of 10). 8680i gloves purchased separately
2	8680i505RHGS	Glove, <u>SMALL</u> , package of 20 pairs (mount and trigger only on RIGHT hand).
OR	8680i505RHGM	Glove, <u>MEDIUM</u> , package of 20 pairs (mount and trigger only on RIGHT hand).
OR	8680i505RHGL	Glove, <u>LARGE</u> , package of 20 pairs (mount and trigger only on RIGHT hand).
OR	8680i505RHGXL	Glove, <u>EXTRA LARGE</u> , package of 20 pairs (mount and trigger only on RIGHT hand).



## 8680i Accessories

### Wearable Accessories

#### Replacement Parts



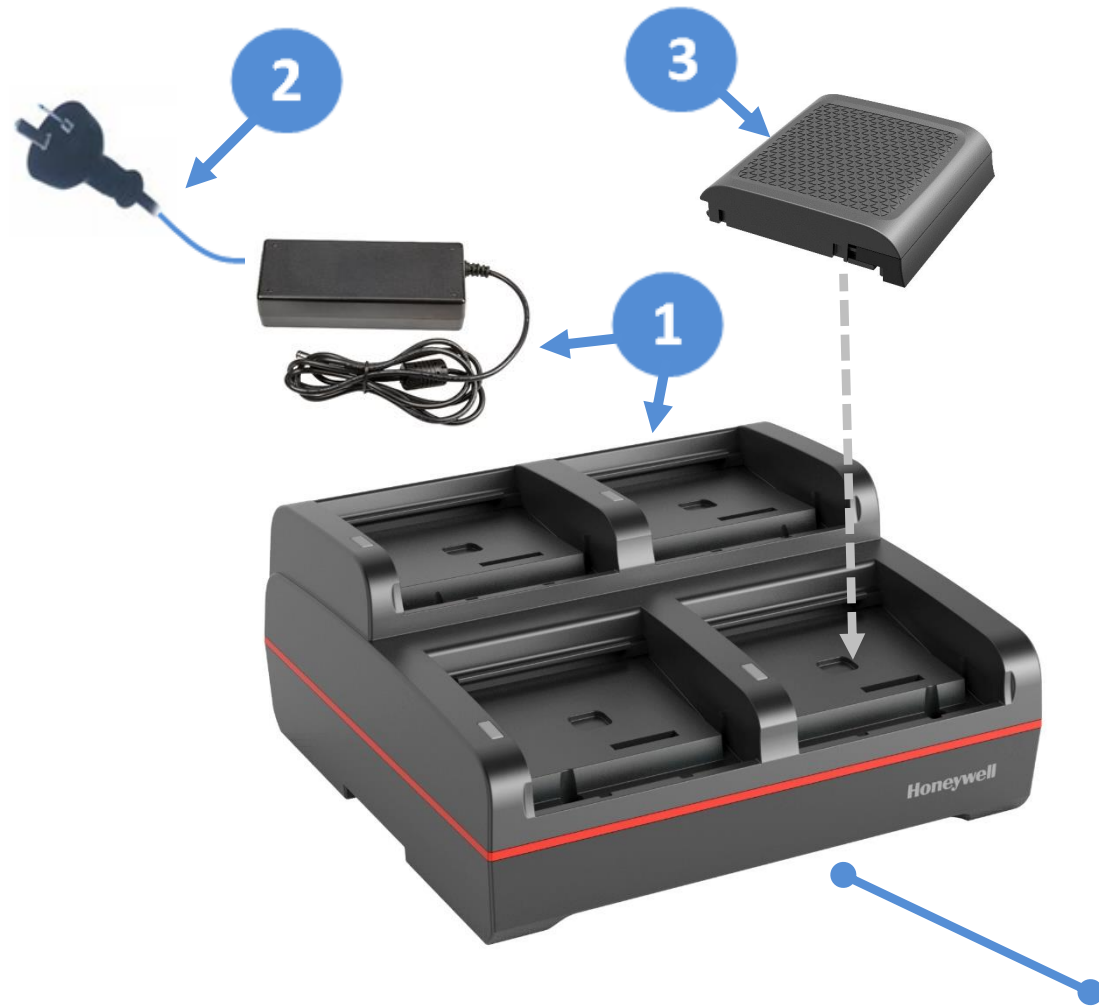
Part Number	Description
8680i505LHGS	Glove, <u>SMALL</u> , package of 20 pairs (mount and trigger only on <u>LEFT</u> hand).
8680i505LHGM	Glove, <u>MEDIUM</u> , package of 20 pairs (mount and trigger only on <u>LEFT</u> hand).
8680i505LHGL	Glove, <u>LARGE</u> , package of 20 pairs (mount and trigger only on <u>LEFT</u> hand).
8680i505LHGXL	Glove, <u>EXTRA LARGE</u> , package of 20 pairs (mount and trigger only on <u>LEFT</u> hand).

Part Number	Description
8680i505RHGS	Glove, <u>SMALL</u> , package of 20 pairs (mount and trigger only on <u>RIGHT</u> hand).
8680i505RHGM	Glove, <u>MEDIUM</u> , package of 20 pairs (mount and trigger only on <u>RIGHT</u> hand).
8680i505RHGL	Glove, <u>LARGE</u> , package of 20 pairs (mount and trigger only on <u>RIGHT</u> hand).
8680i505RHGXL	Glove, <u>EXTRA LARGE</u> , package of 20 pairs (mount and trigger only on <u>RIGHT</u> hand).

## 8680i Charging

### Option 1 – 4 Bay Battery Charger

Charge Replacement Batteries.



### Option 2 – 4 Bay Scanner Charger

Charge the 8680i scanner whilst the battery is installed.



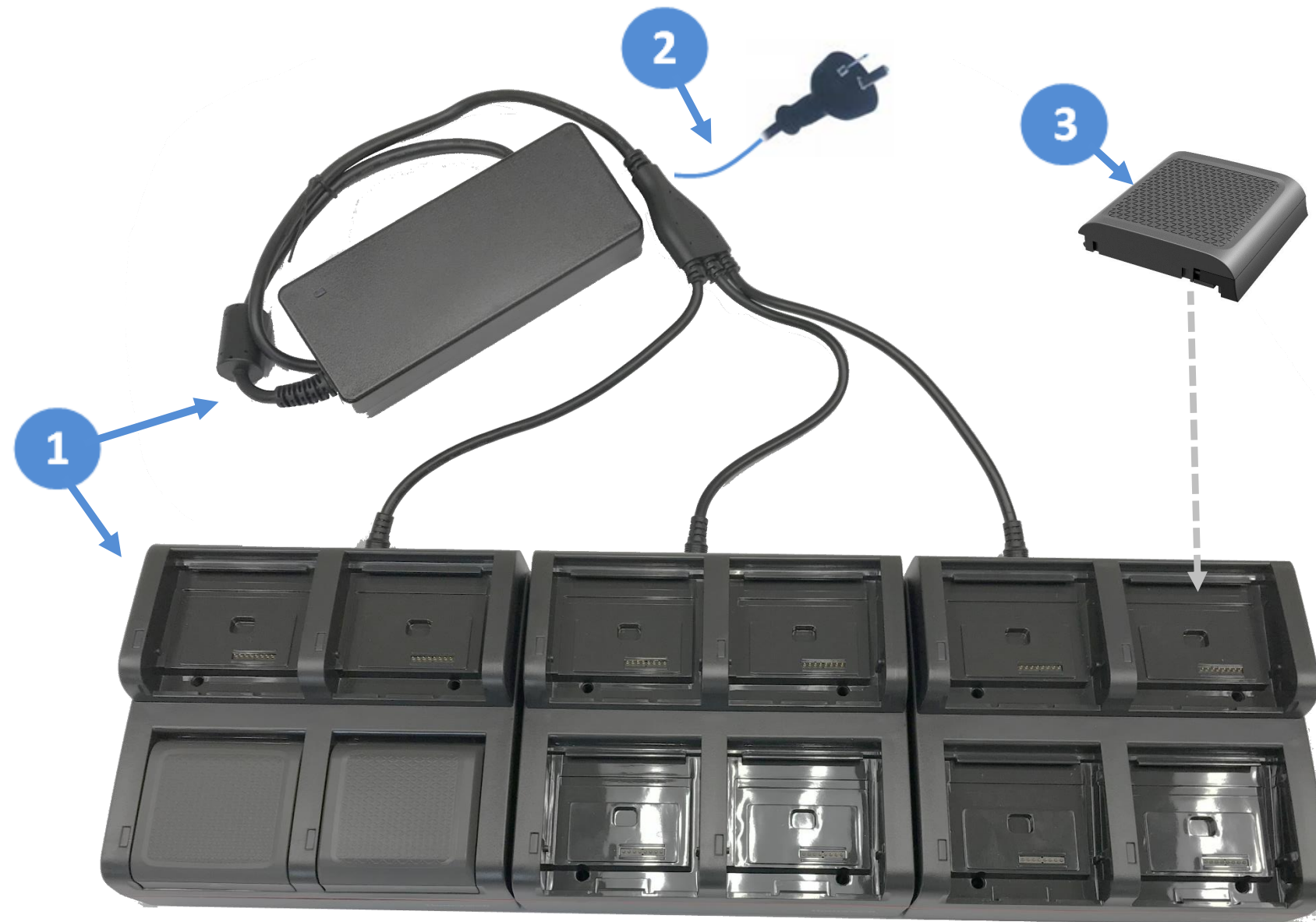
Part Number	Description
1	MB4-BAT-SCN02 4 BAY 8680I BATTERY CHARGER (Includes Power Supply)
2	** AC Power Cord – See Page 14 for Country Specific Power Cords
3	BAT-SCN03 SLIM Battery 1200 mAh
OR	BAT-SCN02 EXTENDED Battery 2160 mAh

Part Number	Description
1	MB4-SCN02 4 BAY 8680i WEARABLE SCANNER CHARGER
2	** AC Power Cord – See Page 14 for Country Specific Power Cords

## 8680i Charging

### Option 3 – 12 Bay Battery Charger

Charge Replacement Batteries.

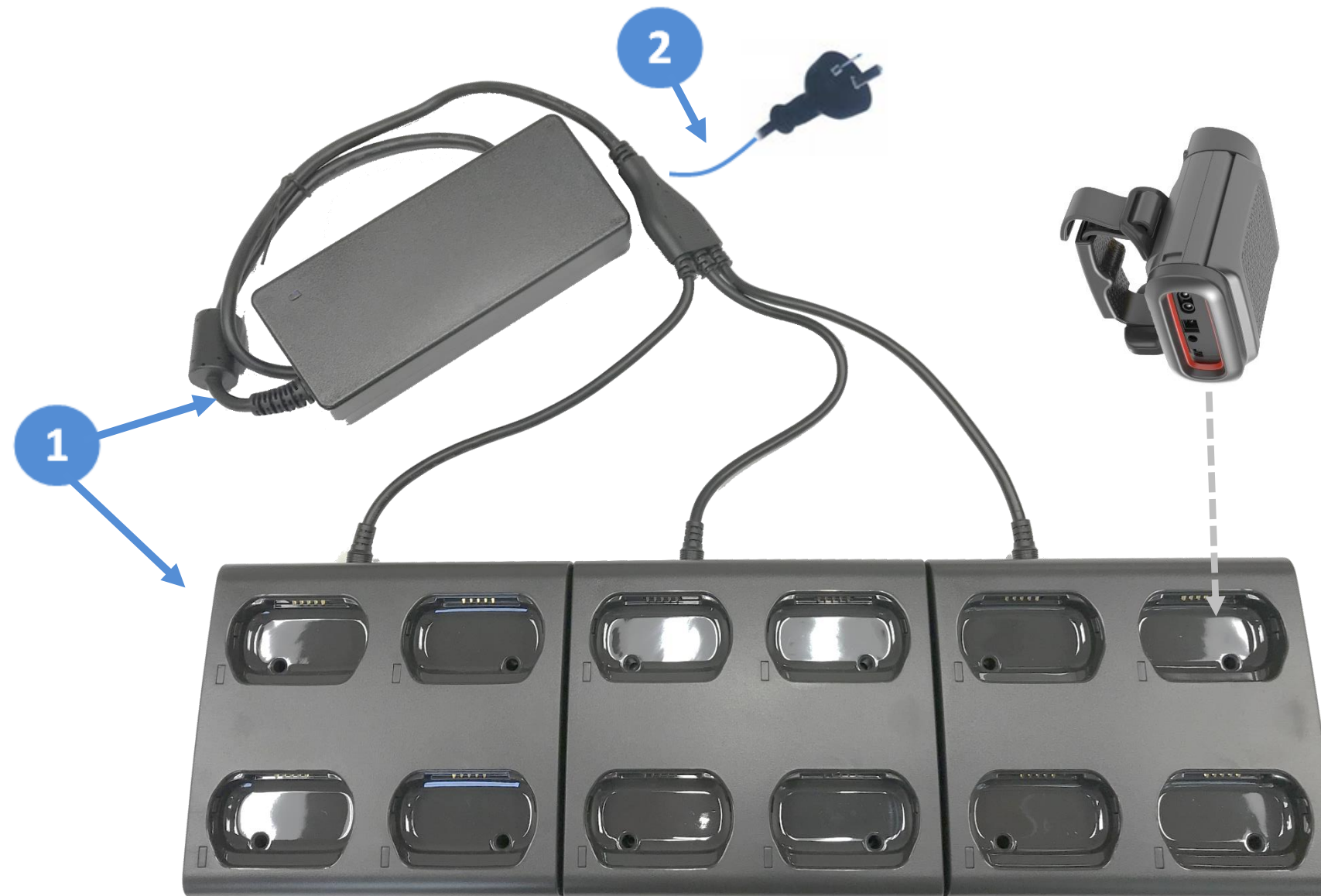


	Part Number	Description
1	MB12-BAT-SCN02	12 Bay 8680i Battery Charger. Charges battery only when removed from 8680i. Compatible with Extended or Slim batteries. Region-specific cord must be ordered separately.
2	**	AC Power Cord – See Page 14 for Country Specific Power Cords
3	BAT-SCN03	SLIM Battery 1200 mAh
OR	BAT-SCN02	EXTENDED Battery 2160 mAh

## 8680i Charging

### Option 4 – 12 Bay 8680i Charger

Charge Replacement Batteries.



Part Number	Description
1 MB12-SCN02	12 Bay 8680i Wearable Mini Mobile Charger. Charges complete 8680i unit with Extended or Slim battery installed. Region-specific cord must be ordered separately.
2 **	AC Power Cord – See Page 14 for Country Specific Power Cords

## 8680i Charger Mounting

### Option 1 – Desktop Mount

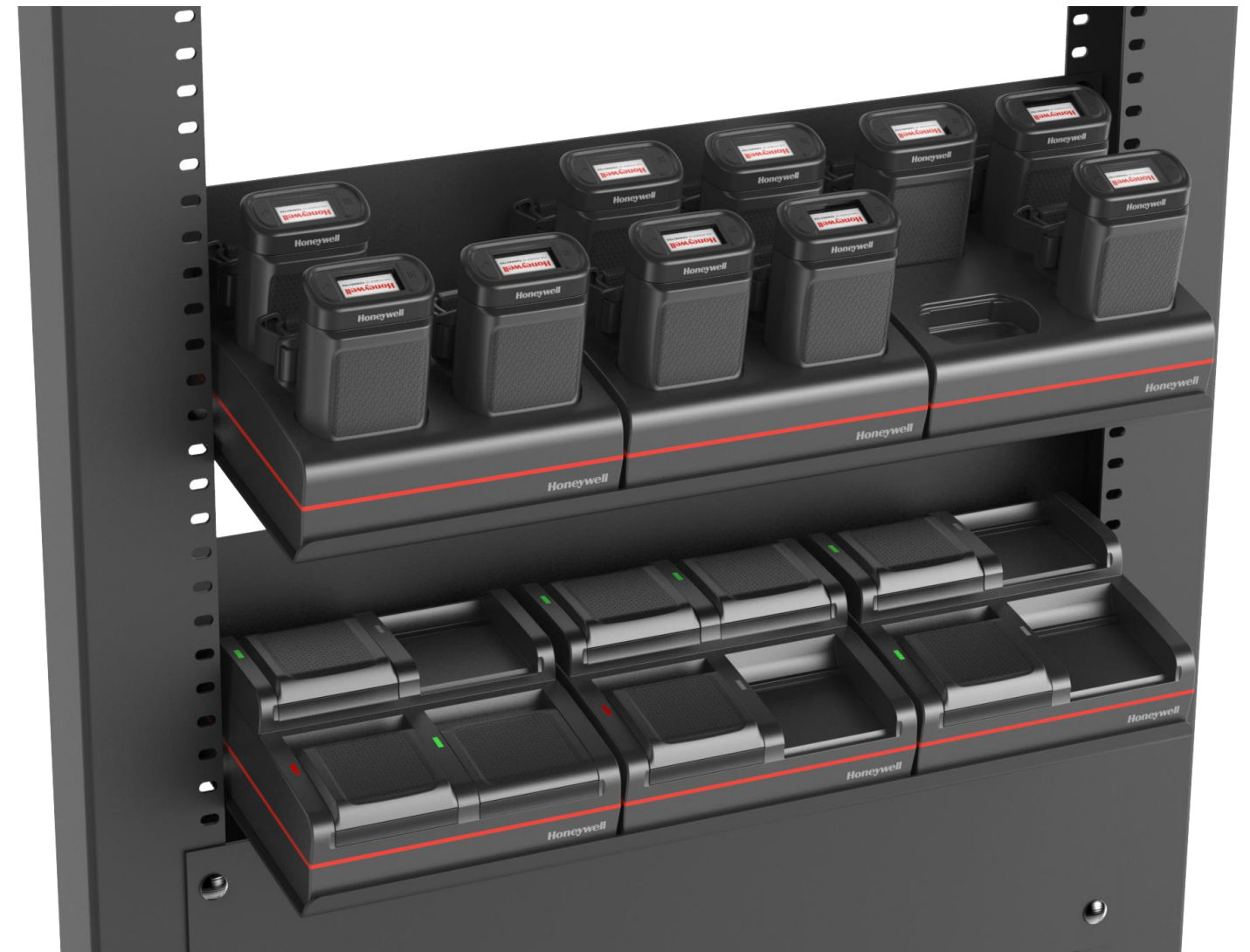
---



### Option 2 – 19-inch Rack Mount Example

---

Chargers fit three-wide in standard 19-inch IT DIN rails or rack shelving for simple deployment



## Miscellaneous

---

### AC Cords

Part Number	Description
50117503-001	Power cord, Argentina, Isled CB
50117501-001	Power cord, Australia, 2.5 m (8.2 ft), Isled CB
50117502-001	Power cord, Brazil, 2.5 m (8.2 ft), D60S-HB
19-19807	Cable, China cord set (CCC), 2.5 m (8.2 ft)
9000091CABLE	AC Power Cord, Denmark
19-19729	Power cord, Europe, IEC320-C13, 2.5 m (8.2 ft)
50127245-001	Power cord, 1.5 m (4.9 ft), India
9000092CABLE	AC Power Cord, Italy
321-500-002	AC Power Cord, Japan
9000093CABLE	AC Power Cord, Switzerland
19-00327	CABLE,POWER CORD/IEC (UK)
19-19726	CABLE,POWER CORD/IEC (US)

## Disclaimer

Honeywell International Inc. (“HII”) reserves the right to make changes in specification and other information contained in this document without prior notice, and the reader should in all cases consult HII to determine whether any such changes have been made. The information in this publication does not represent a commitment on the part of HII.

HII shall not be liable for technical or editorial errors or omissions contained herein; nor for incidental or consequential damages resulting the furnishing, performance, or use of this material.

This document contains proprietary information that is protected by copyright. All rights are reserved. No part of this document may be photocopied, reproduced, or translated into another language with-out prior written consent of HII.

Web Address: [www.honeywellaidc.com](http://www.honeywellaidc.com)

The Bluetooth trademarks are owned by Bluetooth SIG, Inc., U.S.A and licensed to Honeywell.

Dolphin and Mobility Edge are trademarks or registered trademarks of Honeywell International Inc. in the United States and/or other countries.

Android is a trademark or registered trademark of Google Inc. in the United States and/or other countries.

Qualcomm and Snapdragon are trademarks or registered trademarks of Qualcomm Incorporated in the United States and/or other countries.

Other product names mentioned in the manual may be trademarks of registered trademarks of their respective companies and are the property of their respective owners.

All rights reserved.