

Limited Size, Unlimited Features



Dynamic Multi-Beam Imaging
Provides excellent images without sacrificing temporal resolution



Spatial Compound Imaging
Optimizes images of different angles



Widescan for both linear and convex probes
Presents a wider view of the image with one click



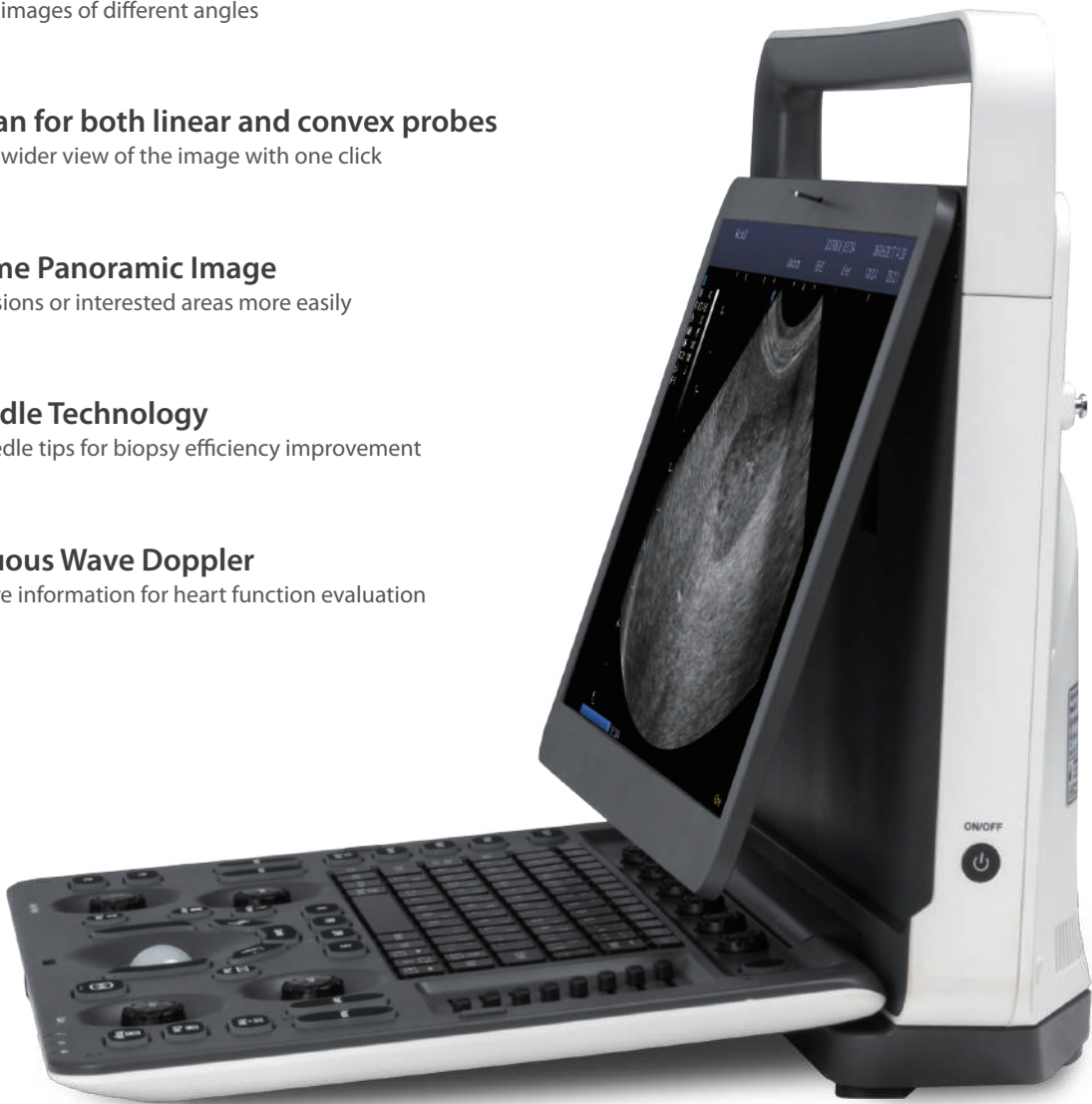
Real-Time Panoramic Image
Locates lesions or interested areas more easily



Vis-Needle Technology
Shows needle tips for biopsy efficiency improvement



Continuous Wave Doppler
Offers more information for heart function evaluation



SonoScape

AMS
AUSTRALIAN MEDICAL SYSTEMS
0400 771 923 or 1800 200 677
AustralianMedicalSystems.com
Sales@AustralianMedicalSystems.com

SonoScape

E2V

Color Doppler Veterinary
Diagnostic Ultrasound System



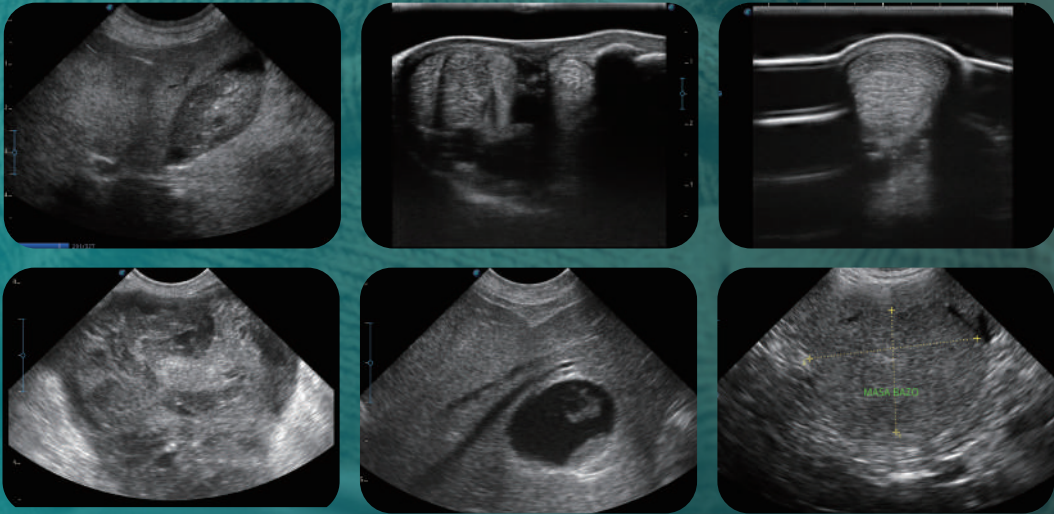
U-E2V20200312



A combination of exceptional image quality and convenient workflow, E2V makes scanning easy for every veterinarian. Thanks to its comprehensive features and technologies, this compact model caters to every type of exam. Specialty presets and exam modes help to provide care for all types of animals, to let you work with confidence under any condition.

More than just extraordinary imaging, E2V with automated functions and comprehensive presets bring satisfying working experience to your daily routine.

- Automated parameter adjustment with one click
- Automatic calculation improves working efficiency significantly
- Considerate patient database management for both owners and pets
- General imaging presets and versatile exam modes cover a full range of veterinary applications
- Post-process and post-management of patient images and information bring confidence for examinations
- Prospective and retrospective storage optimize scanning results for active animals



Comfort Lies in Design



15.6-inch HD monitor



Inclinable monitor and intuitive panel



Water-proof protective film



Quick boot-up time



Quiet system