

## MesoPro ETM Mesotherapy device



Meso - chip aqua channel penetration technology

Electroporation ion channel transdermal technology

# MesoPro ETM Mesotherapy Device

EPM (Electroporation Transdermal Meso-chip) is a technology that combines Meso-chip aqua channel penetration technology and Electroporation ion channel transdermal technology. It mainly uses the microcrystals on the meso-chip to open the water channels on the skin, then delivery the nutrients to superficial dermis layer, Increase the absorption rate.



## Technical Working Principle

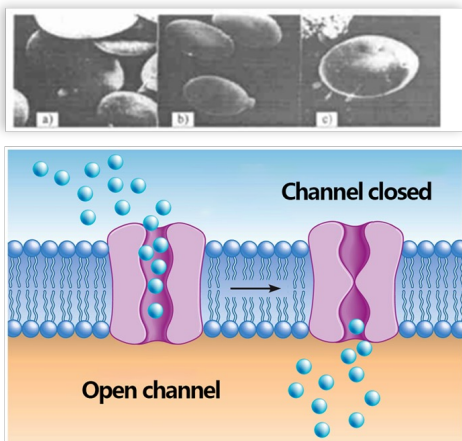


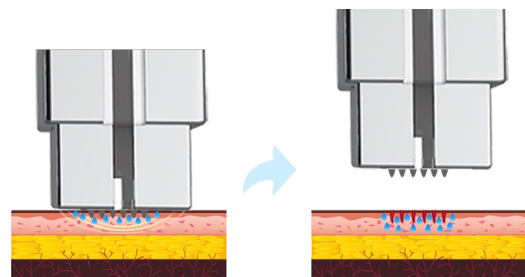
illustration of cell membrane electroporation

### Electroporation ion channel transdermal technology

Electroporation is using Transient electrical pulses to make skin keratinocytes temporarily generate lipid through the skin. When the pulsed electric field ends, the lipid bilayer resumes its original disbilayer aqueous channels, so that nutrients can be absorbed ordered orientation, thus closing the aqueous channel. For the skin, as long as the voltage of electroporation exceeds the threshold voltage (the voltage at which the lipid bilayer collapses), reversible transient water pores can be formed in the lipid bilayer between the stratum corneum cells of the skin, thereby greatly Shorten the transdermal time of nutrients and promote the transdermal rate.

### Mesochip aqua channel penetration technology

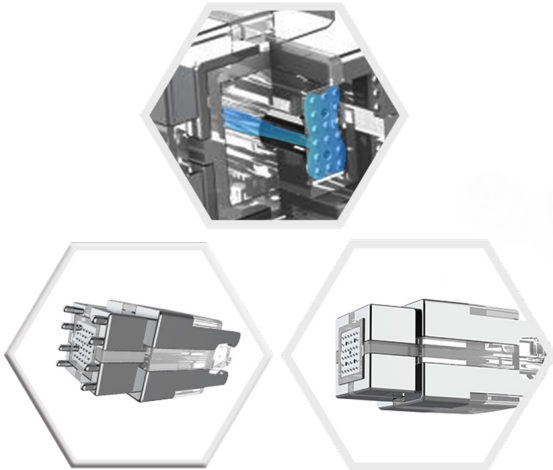
Through the "volcano-shaped" microcrystals arranged in an array on the nanochip, open the skin barrier of the epidermis to form micro aqua channels, and the nutrients in the applicator are introduced into the epidermis through the micro water channels to promote the skin Deep absorption. The micro aqua channels can be completely closed naturally within 1-2 hours after the introduction, and the normal barrier structure of the skin surface can be restored.



# Advantages

## Mesochip

Adoption of Medical Grade PC and stainless with 5 liquid outlets. It combines Meso-chip with Electroporation technologies, can greatly improve the permeability and absorption ratio.



## Painless, comfortable, no downtime

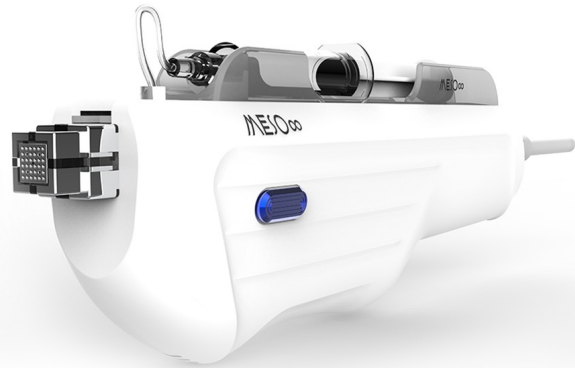
MESO∞ ETM mesotherapy device can delivery the nutrients into skin by ultra-fine and straight line statue,which can be up to 0.3~0.8mm depth, no pain, no blood, avoid any damages to epidermal cells.

## Personalized customization

OEM and ODM for your own unique requirements. We can not only provide basic customization requirements, but also provide the establishment of the Internet of Things (IOT).

## Applicator

Ergonomically designed applicator, easy to operate.



## User Interface design

UI adopts flat design, equipped with LINUX platform, make the operation to be simple and smooth.



# Before & After



Before

After



Before

After


# Technical Parameters

System	
Syringe	1ml,2ml,5ml,10ml
Energy	Level 0 - 5
Depth	Level 1 – 5
Dosage	Level 0 - 5
Frequency	1 – 10(A)Hz
Presetting	YES
Meso chip	
Microneedles	32
Treatment area	12.5mm x 12.5mm
Meso chip area	7mm x 7mm
Platform	
Machine size	26cmx25cmx9cm
Package size	43cmx32cmx15cm
Net Weight	2.5KG
Gross Weight	3KG
Electrial	100-240VAC,1.4A,50/60HZ



 5 Masthead Way Sanctuary<sup>st</sup> Cove QLD 4212

[mike@beautyequipment.com.au](mailto:mike@beautyequipment.com.au)

 0414 970019 07 / 5566 9881

 [www.mmmedicaaesthetics.com.au](http://www.mmmedicaaesthetics.com.au)