

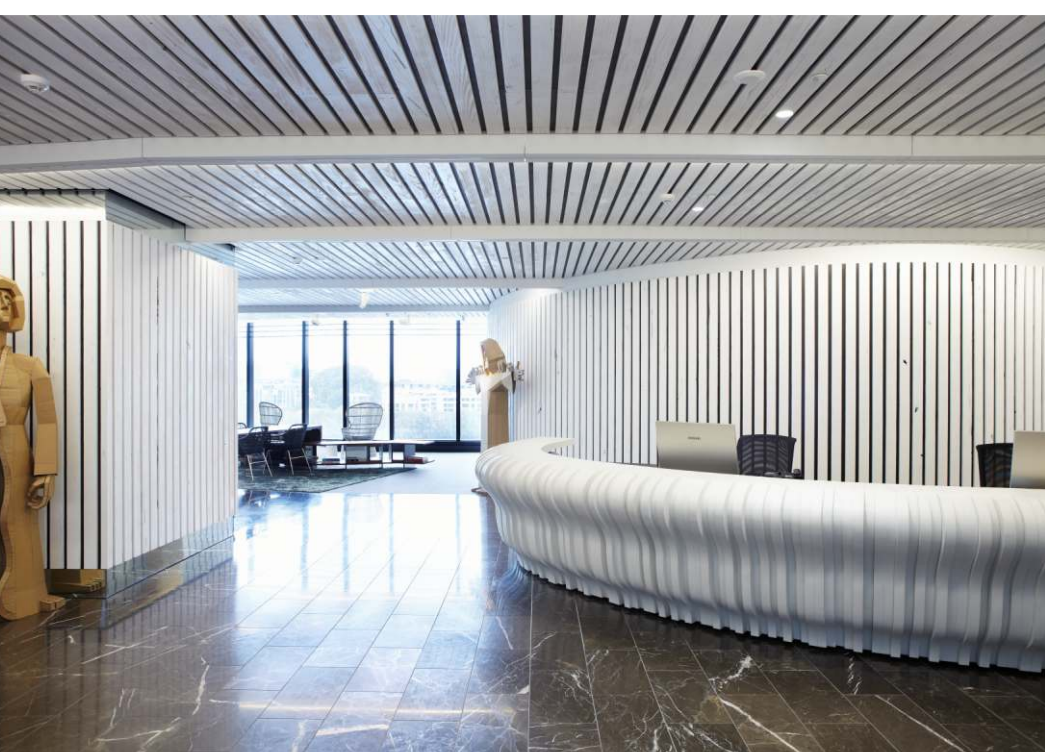
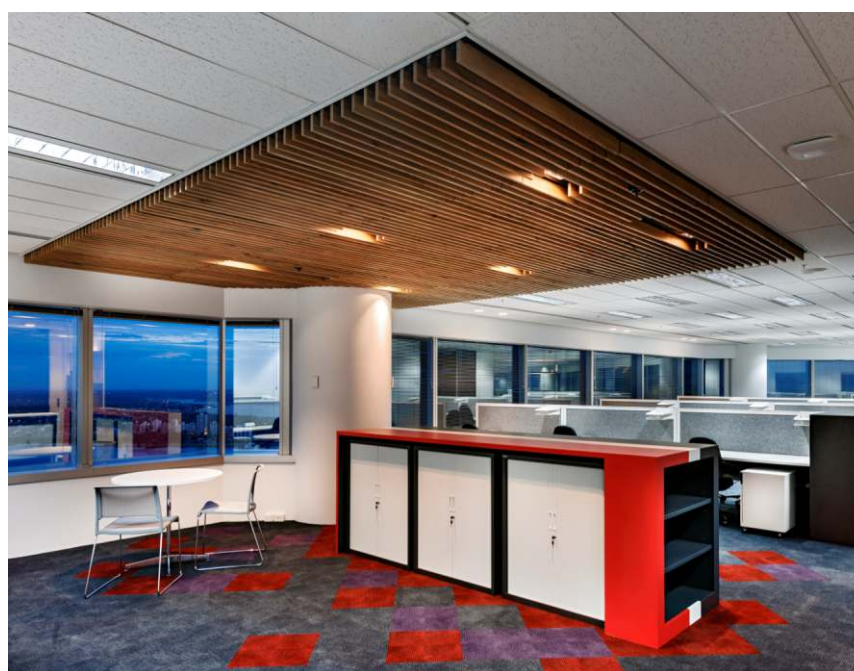
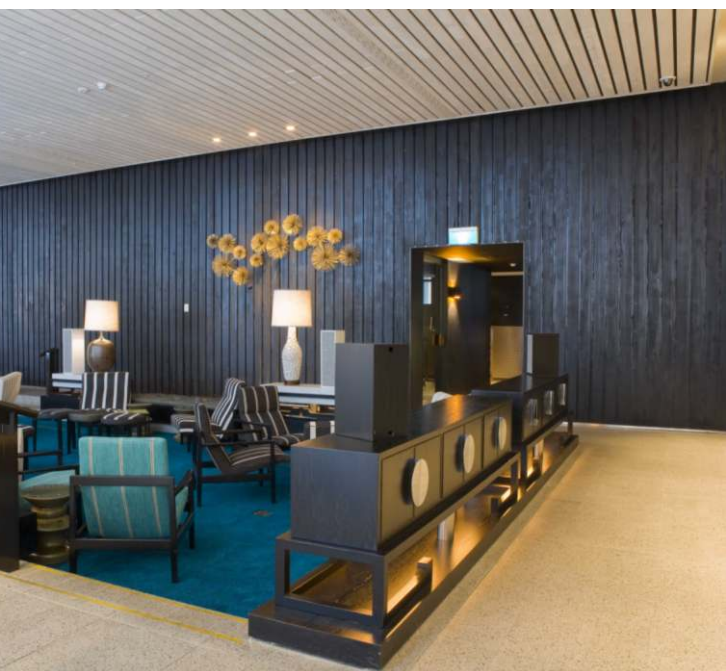
DRIFTWOOD

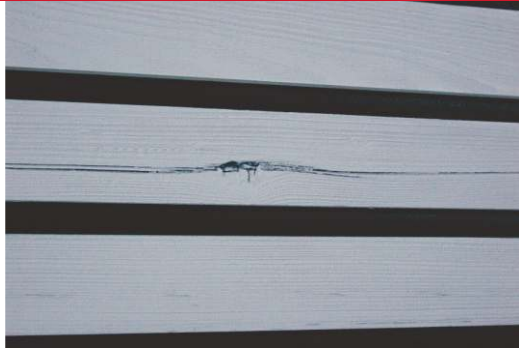
The Rustic Timber Lining



- Create real atmosphere
- Realistic driftwood appearance
- Acoustic absorption
- Australian made







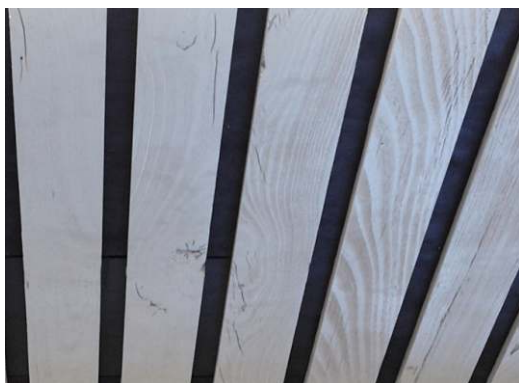
Knots



Pinholes



Deep grooves and cracks



The weathered grain of wood

Weathered effect timber slatted panels for ceiling and walls

What is DRIFTWOOD Rustic Timber ?

Driftwood Rustic Timber is a weathered effect timber slat created by hand etching and coating of a specific grade and species of hardwood timber. This makes every slat used unique.

It is the interaction between the natural characteristics and features, particularly the varying grain densities of the specific hardwood selected. The etching process synthesizes the effect of wood that has been subjected to the washing of ocean waves and sand. The end result is varying exceptional effects which cannot be conveyed in any single sample.

Characteristics that form the natural beauty of Driftwood Rustic Timber include knots, pinholes, deep grooves and cracks, and the weathered grain of the wood. All these features vary in intensity and frequency from slat to slat as illustrated on the left. These are not defects but the inherent quality found in the wood used to create the slats.

Key features:

- ✓ Each slat is unique
- ✓ Achieve unique aesthetic atmospheres
- ✓ Simulates the characteristics of aged wood
- ✓ Acoustic options available
- ✓ Easy to specify, shop drawings, on-site quality control
- ✓ Available in natural, stained and solid colours
- ✓ Modular fully accessible and also Customised options
- ✓ Range of slat configurations and sizes
- ✓ Excellent durability and low maintenance
- ✓ All timber is certified from sustainable sources
- ✓ Meets all Green Star requirements

Page 2 from top, left to right:

SUPATILE SLAT Lift & Shift in profile option 5 in DRIFTWOOD Black creates great depth in this corporate office corridor.

DRIFTWOOD Whitewash creates a directional effect to enhance the Victorian theme garden pavilion of a hotel eatery.

DRIFTWOOD black Shadowline on wall and Openline White on ceiling add depth and character to the lounge of an inner city restaurant.

SUPATILE SLAT Lift & Shift in DRIFTWOOD Clear Vic Ash forms an interesting centre feature in the ceiling of a corporate HQ office area.

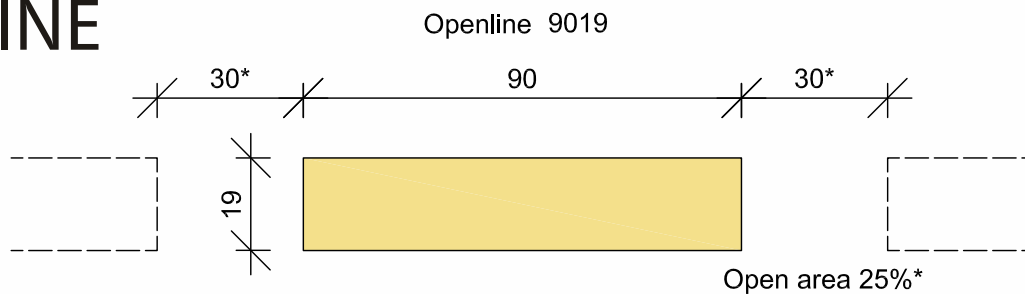
DRIFTWOOD White ceilings & walls form a contemporary but yet rustic feel in the reception area of Lawyers' Chambers. (Also shown on cover.)

SUPATILE SLAT Lift & Shift in DRIFTWOOD Clear Vic Ash finish gives a dramatic directional feel to the staff lounge of this corporate fitout.

Fixing Options

DRIFTWOOD is available in several fixing options:

OPENLINE



Note: Use Timber Framing at max. 450mm centres.

When Installed with HP50 bulk insulation and an open area >20% a NRC of 0.5 or more will be achieved. Higher performance can be achieved with a higher open area, XHP insulation and/or additional IAT.

Slats are supplied in random lengths. Set lengths of 2400 and 3000 are also available.

* TYPICAL ONLY. THIS CAN BE VARIED AS REQUIRED

SUPATILE SLAT

Fully accessible ceiling tiles.

For full information see our [Supatile Slat brochure... click here](#)

Slat 2

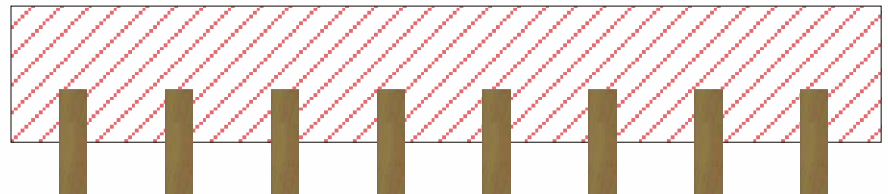


SUPASLAT

Modular preassembled design flexible slat panels for walls and ceilings.

For full information see our [Supaslat brochure... click here](#)

Slat 5



SUPASLAT DRIFTWOOD in White combined with circular lighting wells defines the central area of a retail furniture outlet.



SUPASLAT DRIFTWOOD in White improves acoustics and succeeds in completing the maritime theme in a motel reception area.



DRIFTWOOD Colours

NOTE: DRIFTWOOD is a special rustic finish.



Driftwood White



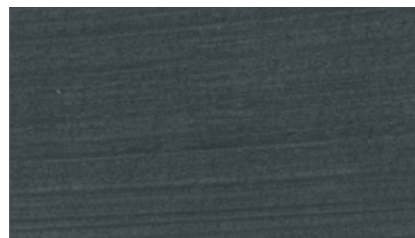
Driftwood Black



Driftwood Clear Vic Ash

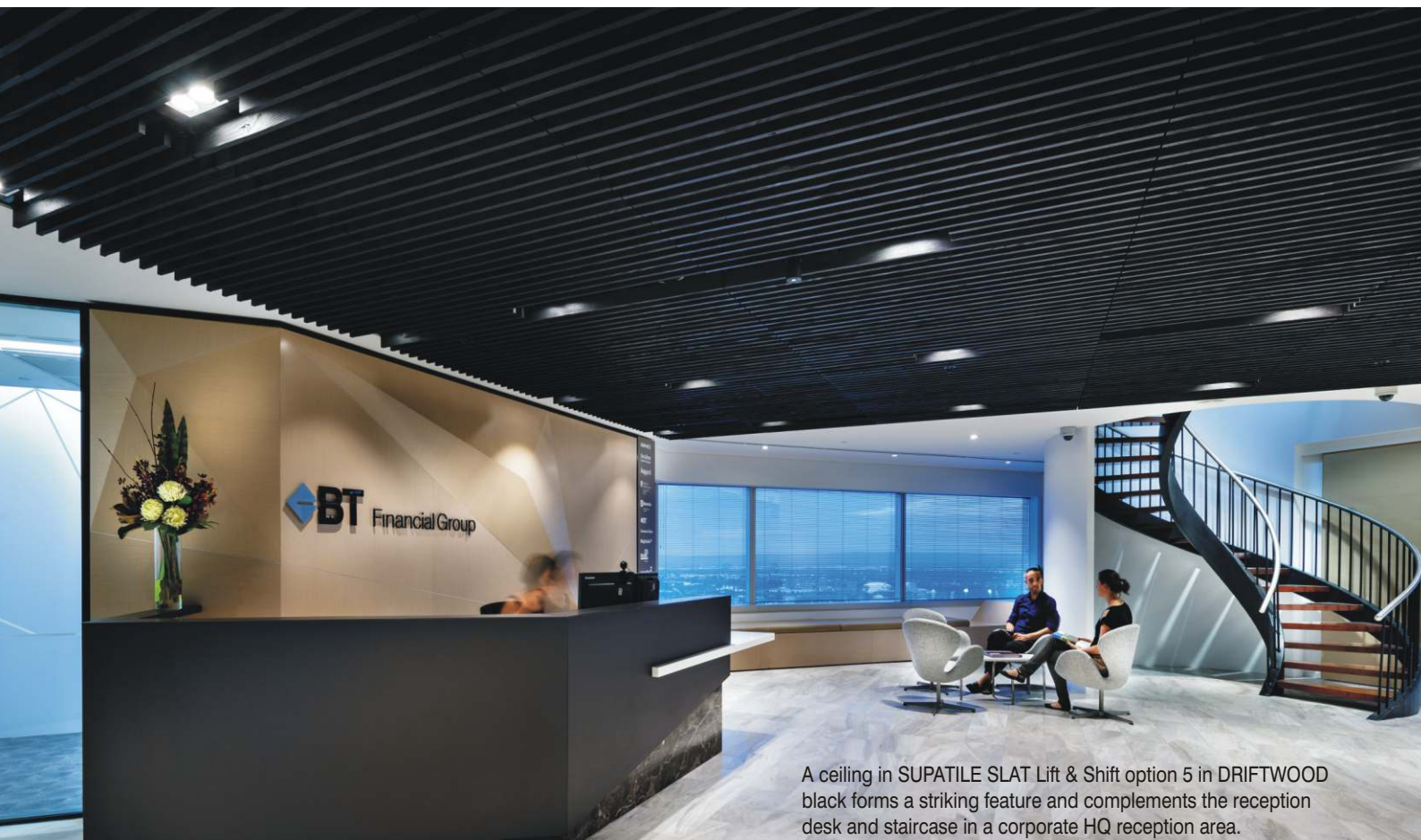


Driftwood Whitewashed



Driftwood Blackwashed

*Colours shown in these swatches are a guide only and actual will vary from panel to panel.
DRIFTWOOD finishes natural products and there will be variations between slats.*



A ceiling in SUPATILE SLAT Lift & Shift option 5 in DRIFTWOOD black forms a striking feature and complements the reception desk and staircase in a corporate HQ reception area.

DRIFTWOOD

The Rustic Timber Lining

Suggested Specification Wording

DRIFTWOOD OPENLINE: Acoustic Ceilings

- ▶ The Ceiling/Wall is to be DRIFTWOOD Openline 9019 by SUPAWOOD Architectural Lining Systems (Phone 1800 002 123).
- ▶ Slats to be [select one that applies: 90mm wide x 19mm deep, installed with 30mm gaps for a 25% open area extent as shown on drawings. Typical slat length to be random/_____].
- ▶ Finish type is to be Driftwood [Specify colour] to all visible surfaces.
- ▶ HP50 Bulk insulation to be installed behind the slats
- ▶ Black unglued IAT is to be installed behind slats to conceal framing and bulk insulation.
- ▶ Installation as per manufacturer's instructions by a sub-contractor accredited by Supawood
- ▶ Ceiling is to be Fire Group 3 as per BCA Specification C1.10 clause 4.
- ▶ Product warranty to be 7 years

To download spec wording in Word format... [click here](#)

SUPATILE SLAT DRIFTWOOD: Accessible Ceilings

Refer to SUPATILE SLAT spec wording (Word)... [click here](#)

Full SUPATILE SLAT brochure PDF format... [click here](#)

SUPASLAT Custom DRIFTWOOD: Walls or Ceilings

For fully Custom DRIFTWOOD options refer to
SUPSLAT Custom spec wording (Word)... [click here](#)
Full SUPASLAT brochure PDF format... [click here](#)

For further information about custom options please contact Supawood.

For more product information:

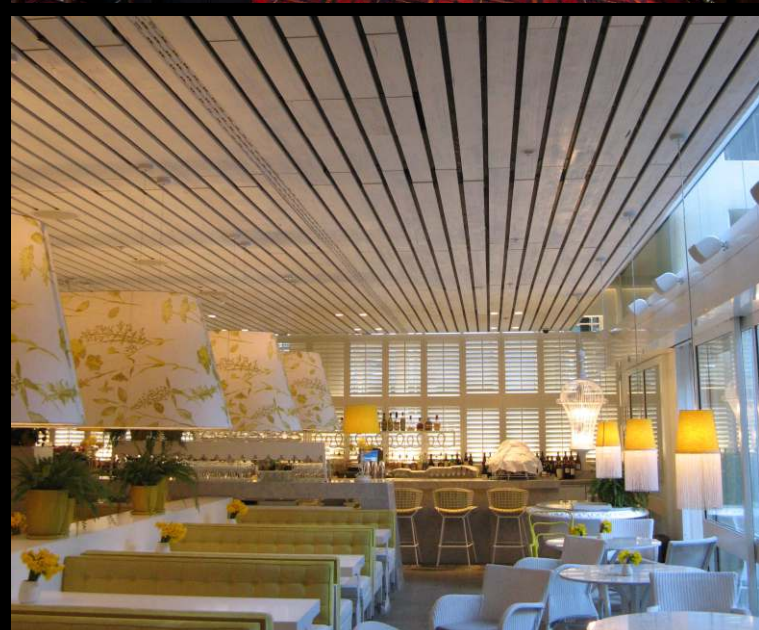
"Global technology and know-how. Local manufacture and support."

SUPAWOOD produce an extensive range of market-leading lining systems and look forward to helping you on your next project.

Website: www.supawood.com

SUPAWOOD Head Office
Australasian Support & Manufacturing
Aust. Phone: +61 1800 002 123
NZ Phone: +64 (9) 887 3234
Email: sales@supawood.com.au

SUPAWOOD UK
UK & EU Support & Manufacturing
Phone: +44 (0) 845 347 0026
Email: sales@supawood.co.uk



Back cover from top:

DRIFTWOOD Blackwashed custom slats in are illuminated by lighting to define the seating areas of a hotel bar and grill.

DRIFTWOOD in White creates a contemporary country theme in a city restaurant.

DRIFTWOOD SUPATILE SLAT Lift & Shift ceiling tiles in Clear Vic Ash are used to define the window sitting area of a staff lounge in a corporate fit-out.