

vLoc Series 2

- Smaller and lighter
- Over four times battery life
- Define, set and lock available features
- Customizable startup screen
- and much more...



Locate with Accuracy and Confidence



vLocPro2

vLocPro2

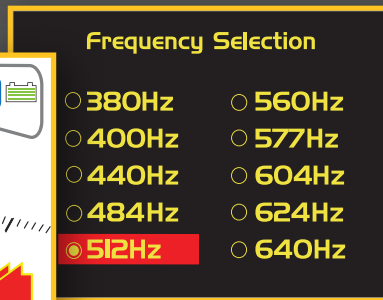
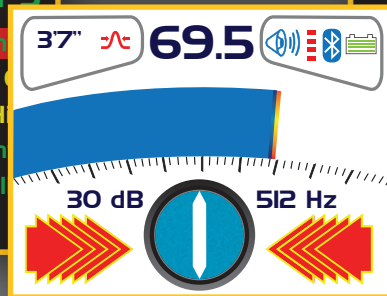
vLocPro2 features enhance productive location

- Rugged ABS & carbon fiber construction
- IP54 rating for all weather use
- Color display
- High speed dual core processor
- Multiple location modes with compass orientation
- Multiple frequencies (over 70 are pre-programmed)
- Push button and continuous depth/current (feet or meters)
- Normal & modulated audio modes (separately selectable for Power, Radio & Active modes)
- Selectable languages (over 20)
- Selectable "time off" function
- Rechargeable and alkaline battery packs
- Optional signal direction to aid line identification
- Optional Bluetooth and GPS
- Optional A-frame and remote antenna

vLocPro2 adds the following features

- Plug & play **Bluetooth**
- Software assisted **triangulation depth**
- Lithium ion batteries
- **MyLocator2** configuration management tool for vLoc Series 2

(*Comparison between vLocPro with NiMH and vLocPro2 with Lithium ion rechargeable battery pack at 72°F)

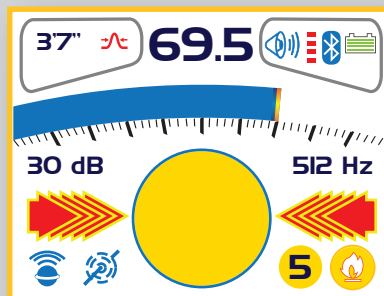


vLocML2

vLocML2

vLocML2 includes all the features available in vLocPro2 plus:

- Location of passive EMS® style markers used by utilities
- to mark underground assets
- Color coded signal strength indication
- Dedicated line locate mode
- Dedicated marker locate mode
- **Simultaneous** line and marker locate mode



ity location, utility mapping, pipeline defect mapping a

GPS is now part of the locating industry. The vLoc's compatibility with a wide range of GPS units enables the user to select the GPS most suited to the degree of accuracy required and the budget available.

GPS & the vLoc Series 2 provide:

- Combined GPS location with locate data (such as depth, current etc)
- Date & time stamping – proving when the locate was done
- Collection of location data for incorporating in map databases or reporting
- Useful management data for planning & productivity assessment

Bluetooth & GPS:

- New Plug & Play Bluetooth module
- Improved internal data-logging capability
- Compatible with a wide range of GPS receivers
- New fast upload software suits most of the popular file formats (.xls, .txt, .kml, .shp)
- Real time on screen GPS data appears with Depth & Current display on Locator



vLocPro2 Measure# 1

Date=01/23/2014
Time=04:17:36
Distance=0.00ft
Depth=3.06ft
Current=0.080A
Frequency=512Hz
Mode=peak
SD=+

MyLocator2 – Configuration Management Tool

New with the vLoc Series 2 – the MyLocator2 Configuration Management Tool is a desktop/laptop utility that enables:

- Uploading data from the locator to a computer
- Downloading of software to the locator
- Updating of both desktop/laptop and locator software (get new features as we develop them)
- Start up screen customization – add a message, telephone #, Plant #, or any picture to your locator
- Unit configuration – select/deselect features. Manage the features and modes available to the user, “deselect” unwanted features/modes and lock using a “lock-out dongle” (available from Vivax-Metrotech). Only you (with the dongle) can re-select that feature. These selections can be saved on your computer as a configuration file (.vmcfg). That configuration can then be installed on multiple units. Without the dongle - simplify the locator menus by removing what features you don't use, you can always reinstate them at any time.



MyLocator2



and long line cable location

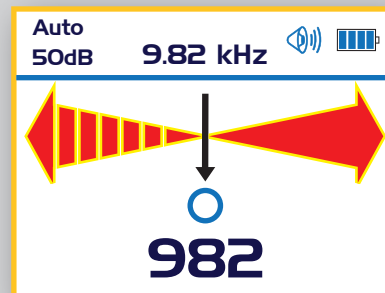


vLoc-9800

vLoc-9800

The vLoc-9800 is a new addition to the vLoc range, it builds on the Metrotech tradition of performance and simplicity – the vLoc-9800 includes:

- Color display
- Automatic and manual gain options
- **Distance Sensitive Left/Right Guidance™**
- Pushbutton depth & current
- Simple user interface
- vLoc Series 2 enhanced battery life
- Sheath fault location (option)



Distance Sensitive Left/Right Guidance™ – Pioneered by Metrotech thirty years ago - this is the standard method of locating in many industries. Most manufacturers provide left/right indication using a peak/null antenna set. Metrotech product and now the vLoc-9800 uses two horizontal guidance antennas some distance apart. This provides very accurate left/right separation – that, together with an exceptionally high level of sensitivity, produces a crisp, fast, accurate response... and an easier locate.

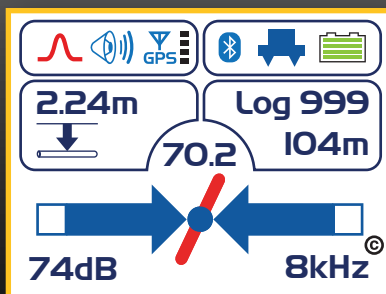
vLocDM2

The vLocDM2 is used to precisely locate and assist in evaluating pipe coating defects. The system can be used on either transmission or distribution pipes. A complete ACVG survey can be undertaken using the vLocDM2 and A-frame.

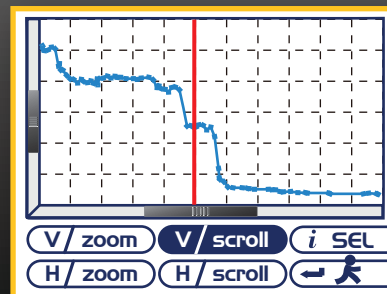
- The vLocDM2's **foot can be removed** to make general pipe location easier.
- Use the light weight and strong carbon fiber A-frame to pinpoint specific defects.
- Bluetooth and GPS Holux (standard) provide GPS and locate information, the Bluetooth can pair with other external GPS units.
- New improved data logging capability will capture both GPS and locate information
- New, fast desktop/laptop upload utility enables export of most popular file formats (.xls, .txt, .kml, .shp)
- The vLocDM2's display has been configured specifically for pipeline evaluation. Data can be graphed in real time on the receiver, while still on site. The walk back feature highlights the operators position on the graph allowing them to return to a point of interest where further evaluation or a ACVG, A-frame survey can be undertaken.
- The vLocDM2 is supplied with a 150W transmitter that operates with 100-240V AC, 12V DC or rectifier voltage (nominally 30-60V DC).
- vLocDM2 is compatible with MyLocator™ Configuration Management Tool. See the vLocDM2 brochure for more details regarding this system.



vLocDM2



Main Display



Walk Back Feature

Transmitters

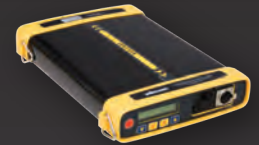
A wide range of transmitters are available for use with the vLoc receivers.

- **Loc-1Tx** (1 watt) transmitter is a three frequency transmitter for short range applications
- **Loc-5Tx** (5 watt) transmitter has multiple frequencies, signal direction and sheath fault locating modes
- **Loc-10Tx** (10 watt) transmitter has our maximum number of frequencies and a **true 10W of output**, together with signal direction and sheath fault locating modes
- **Loc-150Tx** (150 watt) transmitter is used primarily with the vLocDM2 – however it is also useful for those needing a low frequency – high output transmitter.
- **FLS-2 Tx** – generally supplied for rack mounting (also available as a ruggedized portable unit) this transmitter is used mainly for communication cables (such as fiber optic lines with metallic sheath). It can be integrated into line management systems and can be accessed via a telephone line, internet protocol.
- The Loc-5Tx and Loc-10Tx can transmit 2 frequencies simultaneously.

The Loc-1Tx, Loc-5Tx, Loc-10Tx have internal batteries. The Loc-150Tx is externally powered by 100-240AC, 12V DC, 30-60V DC. The FLS-2 again is externally powered with 50V DC (standard) or 100-240V AC (option). See the relevant transmitter data sheets for a full details of features and performance.



Loc-1Tx



Loc-5Tx



Loc-10Tx



Loc-150Tx



FLS-2

vLocCam2

The vLocCam2 is a locator configured for use with CCTV inspection cameras (transmitting 512Hz/640Hz location signals) and a range of battery powered Sondes. (Sondes are small self contained transmitters which are pushed through pipes to find blockages or locate the position and depth of the pipe from the surface. Low frequency Sondes - 512Hz or 640Hz will radiate through both plastic and cast iron pipes. Higher frequency Sondes - 8 kHz or 33 kHz - are used mainly for plastic pipes or ducts).

Vivax-Metrotech manufactures a range of CCTV inspection cameras such as the vCamModular.



vLocCam2



vCam-5

Call for vCam CCTV Inspection brochure.

Sondes

Battery powered self contained transmitters.



Dia. 0.7" (18mm)
Range 12ft (4m)



Dia. 1.5" (38mm)
Range 15ft (5m)



Dia. 2.5" (64mm)
Range 24ft (8m)

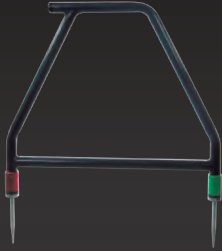


Dia. 1" (23mm) flexible
Range 20ft (7m)

Receiver Accessories (specify model of receiver when ordering accessories)

A-frame

For determining the position of ground/sheath faults.



Charging Lead (12V DC)

12ft (4m) lead to charge the receiver battery in a vehicle.



Remote Antenna

Used for cable identification.



Bluetooth

Enables Bluetooth connectivity to other Bluetooth devices such as GPS. The Bluetooth module can be retrofitted to vLoc series 2 receivers by the user.

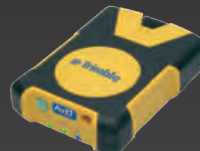


GPS

Vivax-Metrotech Bluetooth is compatible with many other GPS units including high accuracy GPS.



10ft (3m) accuracy



3ft (1m) accuracy

Rechargeable Battery and Charger

Lithium ion rechargeable battery pack and charger



Transmitter Accessories (specify model of transmitter when ordering accessories)

VM-Clamps

To apply the transmitter signal to a target cable when no access to the conductor is possible. Dia. 2" (50mm), dia. 4" (100mm), dia. 5" (125mm), 18" flexible (450mm).



LPC Separation Filter

To apply the transmitter signal to cables carrying up to 240V AC.



Loc-10Tx - Power Lead (12V DC)

30ft (10m) lead to power the transmitter from a vehicle.



Rechargeable Battery Packs and Chargers

Loc-5Tx (5 watt transmitter)
Loc-10Tx (10 watt transmitter)
NiMH rechargeable battery packs and chargers



Vivax-Metrotech Corp. (Headquarters)

3251 Olcott Street, Santa Clara, CA 95054, USA
T/Free: 800-446-3392
Tel: +1-408-734-1400
Fax: +1-408-734-1415
Email: sales@vxmt.com

Ventas para América Latina

3251 Olcott Street, Santa Clara, CA 95054, USA
T/Free: 800-624-6210
Tel: +1-408-734-1400
Fax: +1-408-743-5597
Email: VentasparaAmericaLatina@vxmt.com

Vivax-Metrotech AUS

Unit 1, 176 South Creek Rd Cromer
NSW 2099
Tel: +61 (0)2 9972 9244
Fax: +61 (0)2 9972 9433
Email: sales@vxmtaus.com

Vivax-Metrotech Ltd.

Unit 18-19, Woodside Road,
South Marston Ind. Est., Swindon, SN3 4WA, UK
Free Phone: 0800 0281811
Tel: +44(0)1793 822679
Email: salesUK@vxmt.com

Vivax Canada Inc.

41 Courtland Ave Unit 6, Vaughan,
ON L4K 3T3, Canada
Tel: +1-289-846-3010
Fax: +1-905-752-0214
Email: CanadianSales@vxmt.com



Disclaimer: Product and accessory specification and availability information is subject to change without prior notice. V1.5 (Mar 2015)