



Diamante 70

Lava Rock Grills

- Outer casing and feet in stainless steel.
- Adjustable worktop height, ranging from 840 to 900mm.
- Removable fat drawer under the heating elements.
- Each cooking area is heated by a stainless steel burner.
- Temperature is adjusted using a safety tap with thermocouple, piezo electric ignition.
- The 80 module has two cooking areas.



Olis Ali S.r.l.

Via Del Boscon, 424 - 32100 Belluno - Italy
T: +39 0437 8558 **F:** +39 0437 838 274
W: olis.it **M:** info@olis.it



Cast-iron grill plate for meat and fish (optional).



Stainless-steel grill plate in both meat and fish versions.



Distance from heat to grill plate is adjustable using side levers providing different cooking temperatures.

GAS LAVA ROCK GRILL ON OPEN CUPBOARD

CODE
CR0994819

MODEL
D74/10PLGP

SERIE
DIAMANTE70

Project:

Rev.:

Zone:

Location:



we innovate cooking



GENERAL FEATURES

- Diamante 70 is available on the worktop, on a compartment base and on ovens in a range of solutions, ideally suited to a vast range of uses and settings, from the smallest to medium and large kitchens. All tops are laser cut to ensure that all components fit together perfectly.
- • AISI 304 stainless steel, Scotch Brite finish, 1.5 mm worktops
- • Swing door with accessories for holding knives, ladles and bottles
- • Digital control panel with waterproof control knobs
- • Double doors: bottom or side hung
- • Functional side panels with up to 7 containers and holders
- • The modular range: 200-400-600-800-1200
- • Simple, functional coupling system
- • Also available in a plinth-mounted version
- • Wide range of accessories

TECHNICAL DATA

- GAS LAVA ROCK GRILL ON OPEN CUPBOARD
- Outer casing and feet in stainless steel.
- Adjustable worktop height, ranging from 840 to 900mm.
- Removable grease drawer under the heating elements.
- Each cooking area is heated by a stainless steel burner.
- I is adjusted using a safety tap with thermocouple, piezo electric ignition.
- The 80 module has two cooking areas.

GAS LAVA ROCK GRILL ON OPEN CUPBOARD



we innovate cooking

CODE
CR0994819

MODEL
D74/10PLGP

SERIE
DIAMANTE70

TECHNICAL INFORMATION

SPECIFICATIONS	DATA
CODE	CR0994819
DEFINITION	D74/10 PLGP PIETRALAVICA GAS M80 VANO G.
MODEL	D74/10 PLGP
SUPPLY	GAS
WIDTH	800 MM
DEPTH	730 MM
HEIGHT	870 MM
NET WEIGHT	109,800
VOLUME	0,508 M3
PACKAGING LENGTH	850,000
PACKAGING WIDTH	850,000
PACKAGING HEIGHT	1150,000
PACKAGING VOLUME	0,831
PACKAGING GROSS WEIGHT	120,000
GAS TYPE	GPL 28-30/37 mbar
GAS POWER (G30/30 MBAR)	20,00 KW
GAS POWER (G25/25 MBAR)	19,00 KW
CERTIFIED MODEL	D74/10 PLGP
CERTIFICATION NUMBER	CE-0085BU0309
POT GAS TOT / POT FRIGO2	20,00
CERTIFICATION	0085BU0309
CERTIFICATION BODY	0085
TYPE	SU ARMADIO
PRODUCT VARIANTS	P.LAVICA CON GRIGLIA CARNE
NUMBER OF MODULES	1/2 MODULO

GAS LAVA ROCK GRILL ON OPEN CUPBOARD



weinnovate cooking

CODE
CR0994819

MODEL
D74/10PLGP

SERIE
DIAMANTE70

ACCESSOIRES

CODE	MODEL	DESCRIPTION
CR0980139	7GPC40	GRID FOR MEAT MADE OF S/S AISI 304 M40 70
CR0980149	7GPC80	GRID FOR MEAT MADE OF S/S AISI 304 M80 70
CR0980159	7GPI40	FISH GRATE M40 70
CR0980169	7GPI80	FISH GRATE M80 70
CR0980179	7GPCI80	MEAT-FISH GRATE M80 70
CR0980189	7GPCG40	GRID FOR MEAT MADE OF CAST IRON M40 70
CR0980199	7GPCG80	GRID FOR MEAT MADE OF CAST IRON M80 70
CR0996979	DBVP4	DOOR M40
CR0997009	DBVPA4	ACCESSORIABLE DOOR M40
CR0997029	DAPC	KNIFE HOLDER
CR0997019	DAPD	DOSATOR HOLDER
CR0997039	DAPS	SPICE RACK
CR0997049	DAPM	LADLE HOLDER
CR0997059	DAPDB	DISPENCER HOLDER
CR1353589	DBVC4	DRAWERS KIT
CR0599729	74/10BH	NEUTRAL BASES WITH HYGIENIC FINISHING, TYPE H2
CR1353569	DRG21	GRILL HOLDERS GN 2/1
CR0592799	NXZF8	FRONTAL PLINTH
CR0592830	NX9ZG	PLINTH JUNCTION
CR0599649	7ZL	SIDE PLINTH NX7ZL
MA97432000	NXR	CASTORS KIT
MA97433000	NXRI	CASTORS KIT
CR0592940	NX9CAT	WATER TAP
CR0599859	7CAM	WATER TAP
CR0592869	CR0592869	KIT 4 FEET FOR CONCRETE PLINTH INSTALLATION
CR0593580	NX9PT	KIT 4 FEET FOR TOP VERSION
CR0592879	CR0592879	KIT ANTI-TIPPING FEET
CR0592399	NXTVT1	CLOSING PANEL FOR TECHNICAL SPACE
CR0592409	NXTVT2	CLOSING PANEL FOR TECHNICAL SPACE
PTD7DX	PTD7DX	END SIDE RIGHT ELEMENT
PTD7SX	PTD7SX	END SIDE LEFT ELEMENT
CMF0708	CMF0708	FRONTAL HANDRAIL
CMA1808	CMA1808	PERIMETRAL HANDRAIL

GAS LAVA ROCK GRILL ON OPEN CUPBOARD

CODE
CR0994819

MODEL
D74/10PLGP

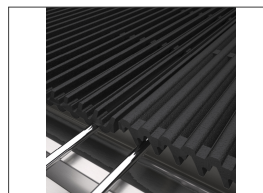
SERIE
DIAMANTE70



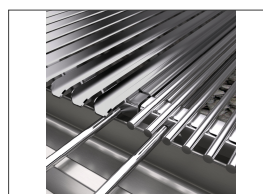
*we*innovate cooking

we cook with
Diamante

Product's PLUS



Cast-iron grill plate for meat and fish (optional).



Steel grill plate in both meat and fish versions.



Distance from heat to grill plate is adjustable using side levers in order to provide different cooking temperatures.



Thanks to the water jet ingress protection rating, awarded after passing specific tests, knobs and knob bezels can be washed at the end of the working day without affecting performance or safety.

Olis Ali Group S.r.l.

Via Del Boscon, 424 - 32100 Belluno - Italy

W: olis.it M: info@olis.it

T: +39 0437 8558

F: +39 0437 838 274



GAS LAVA ROCK GRILL ON OPEN CUPBOARD

CODE
CR0994819

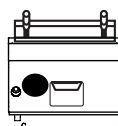
MODEL
D74/10PLGP

SERIE
DIAMANTE70

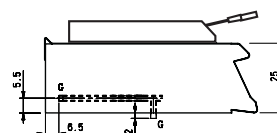
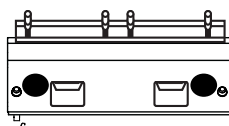
SCHEMA DI INSTALLAZIONE - INSTALLATION DIAGRAM - INSTALLATIONSPLAN - SCHÉMA D'INSTALLATION - ESQUEMA DE INSTALACION -INSTALLATIESHEMA - IINSTALLATIONSRIITNINGAR

MISURE IN cm - DIMENSIONS IN cm - ABMESSUNGEN IN cm
MESURES EN cm - MEDIDAS EN cm - MATEN IN cm

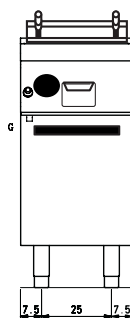
(D) 72/10 TPLG



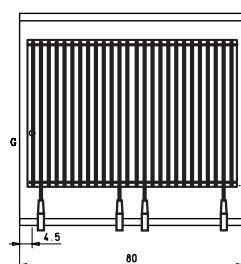
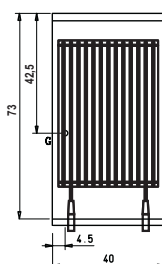
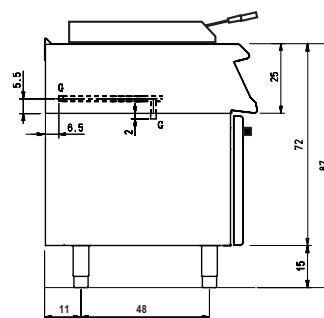
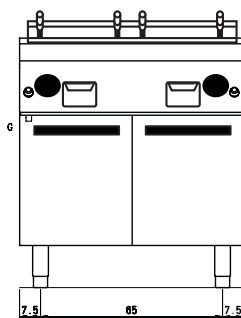
(D) 74/10 TPLG



(D) 72/10 PLG



(D) 74/10 PLG



Legenda - Legende - Key - Légende - Leyenda - Legenda

G Attacco arrivo gas - Gasanschluss - Gas connection
Arrivée gaz - Union de gas - Gasaansluiting
EN 10226-1 R 1/2; EN ISO 228-1 G 1/2 (DK)