

# ETHY-100 Series

Decentralized I/O Expansion with Dual Ethernet Ports



CE FC

## Key Features

- Rich I/O combination and decentralization
- Daisy chain for both data and power
- Direct wiring and removable terminal block
- I/O status indicators and user definable button
- Built-in configurable I/O functions

## Introduction

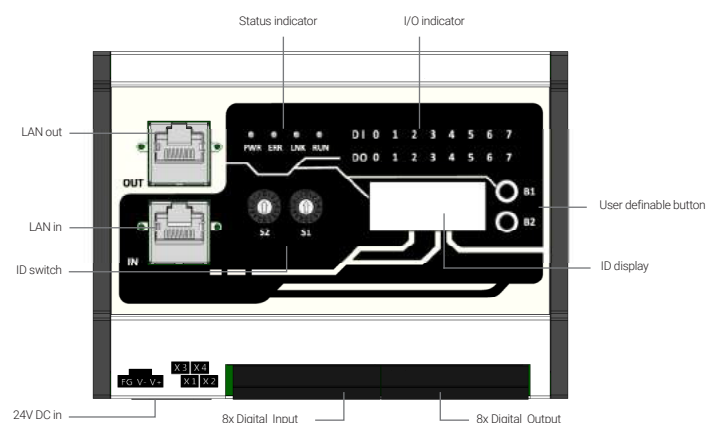
ETHY-100-2008S is a system expansion I/O module featuring 8 digital input/ output and status monitor/ indicator. It conforms to the IEEE 802.3at Power Device (PD) specifications and can be driven by a standard Power Sourcing Equipment (PSE). It can be daisy-chained to transfer data and provide power to expand your system while the removable terminal blocks are useful when adding/ removing the device into/ out of awkward or remote locations. In addition to being a powerful external I/O module, ETHY-100-2008S also provides a friendly application programming interface (API) and designated mechanisms which allow users to configure a responsive automate system with low latency and high in performance. ETHY-100-2008S is the best automation solution.

## Specifications

ETHY-100-2008S		ETHY-100-2604S	
<b>General</b>			
Module Status Indicator	4 LEDs		
I/O Status Indicator	1 LED for each channel		
I/O Connectors	4 removable 3.81 mm connectors		
Communication Interface	2 Ethernet ports		
<b>Digital Input</b>			
Channels	8 channels		
Input Type	Sinking/sourcing, channel-to-channel isolated		
Input Voltage	Logic Level 0: 0 to 5V Logic Level 1: 11 to 30V		
Isolation Voltage	2500 VDC		
<b>Digital Output</b>			
Channels	8 channels	4 channels	
Output Type	Sink	Relay	
Rated Output Voltage	24VDC	24VDC	
Rated Output Current	100mA per channel	1 A per channel	
Max. Output Current	500mA	2.5A	
Isolation Voltage	2500 VDC	2500 VDC	

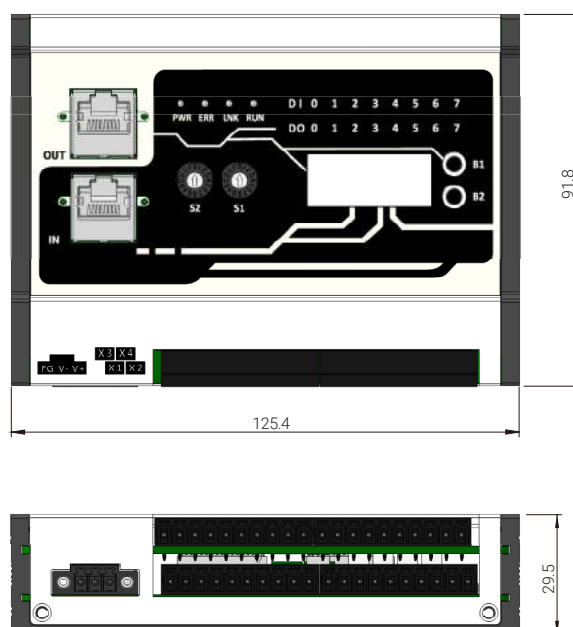
ETHY-100-2008S		ETHY-100-2604S	
<b>OS Support</b>			
Windows	Windows 7/10 32/64-bit		
<b>Power</b>			
PoE PD	IEEE 802.3at PoE+ PD		
DC Input	24VDC ±10%		
Power Consumption	3W		
<b>Mechanical</b>			
Dimensions	125.4mm (W) x 101.8mm (H) x 25.9mm (D) (including connectors)		
Weight	450g		
<b>Environmental</b>			
Operating Temperature	-25°C ~ 70 °C		
Storage Temperature	-40°C ~ 85 °C		
Humidity	10~90%, non-condensing		
EMC	CE/FCC Class A according to EN50024 & EN50032		

## Appearance



## Dimensions

Unit : mm



## Ordering Information

Model No.	Product Description
ETHY-100-2008S	Ethernet I/O expansion module with 8 isolated digital inputs and outputs
ETHY-100-2604S (Coming soon!)	Ethernet I/O expansion module with 8 isolated digital inputs and 4 relays outputs