



# TELEHANDLERS



- Nearly 500 million EUR turnover (over 80% export)
- 1,450 employees
- 8% of turnover invested in Research & Development
- Over 50 thousand tons of steel

- Over 90% of production is done in-house
- 60 manufacturing robots
- 7 automatic cutting stations
- 5 hi-tech painting lines



# THE MERLO GROUP

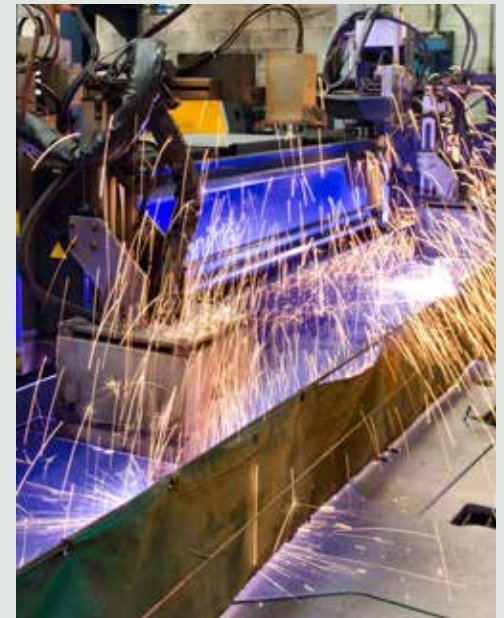
The Merlo brand has always been synonymous with cutting-edge technology in the field of telehandlers, operating machines and telescopic boom tractors. Since its inception in 1964, the Group's focus has been on gathering expertise built around ideas, perseverance and passion.

This is how the Group has created new, successful products and won a number of international awards.

Developing complex projects, from inception to outcome, from design to sales, requires the ability to put forward innovative solutions that anticipate the needs and possible developments of the most competitive markets. In order to achieve increasingly ambitious goals, Merlo technology has become the driving force behind a development that has made it possible to look beyond daily business.

Safety, comfort, performance are the key words. As a result, every machine rises the bar and sets a new standard in terms of design, power, care for man and the environment. This winning attitude translates into high integration into production processes, modern construction systems, process automation, revolutionary integrated electronic systems, in robotised processes and much more. Our commitment to maintaining an ever-closer relationship with our customers is reflected in our ongoing training and updating programmes, our assistance services, our relationship with our trusted dealers.

The results of all this are compact, manageable machines that ensure unrivalled operating features, comfort, efficiency and above all, unparalleled safety. This is the strength of the Merlo Group.



# OUR HISTORY



Over 55 years  
of looking  
towards  
the future

The Merlo Company was established in 1964 and took its first steps in the construction sector with such products as **dumpers** and **self-loading concrete mixers** (1966). 1981 saw the birth of the first Merlo telehandler, the **SM30**, but the turning point was in 1987. That was the landmark year for *the telehandler* as we know it, with the engine parallel to the boom, opposite the cab. This solution was conceived and patented by Merlo and has become the state of the art and the benchmark in the industry. This design concept offers a low centre of gravity and excellent visibility in all directions, so much so that Merlo named the product family **Panoramic**. Over time, the range has been expanded with the addition of new, important product families dedicated to the construction industry, such as the **Roto** machines (first telehandlers in the world featuring a rotating turret) in 1991 and to agriculture (**Turbofarmer** in 1996 and **Multifarmer** in 2000), a sector which now accounts for more than 60% of the company's turnover. Merlo is one of the few manufacturers, with an industrial vocation, to produce 90% of the machine components in-house at the company based in Cuneo (Piedmont, Italy). In 2014, the **agricultural rangewas** revolutionised by introducing new product families based on the modular design concept: **Turbofarmer Compact** and **Medium Capacity**, the **Turbofarmer High Capacity** and the **Multifarmer**, a new and fundamental step forward in the world of agricultural machinery. In 2019, the new, fully redesigned **construction range** was introduced, featuring the revamped telehandler families **Panoramic with stabilizers** and **Roto**. The story continues, and important novelties in the construction and industry ranges have been announced for the year 2021, introducing models, like the e-worker 100% electrics, that once again will bring a breath of fresh air to the market.



DM  
1966



DBM  
1966



SM  
1981



PANORAMIC  
1987



ROTO  
1991



TURBOFARMER  
1996



MULTIFARMER  
2000



MODULAR  
MACHINES  
2012



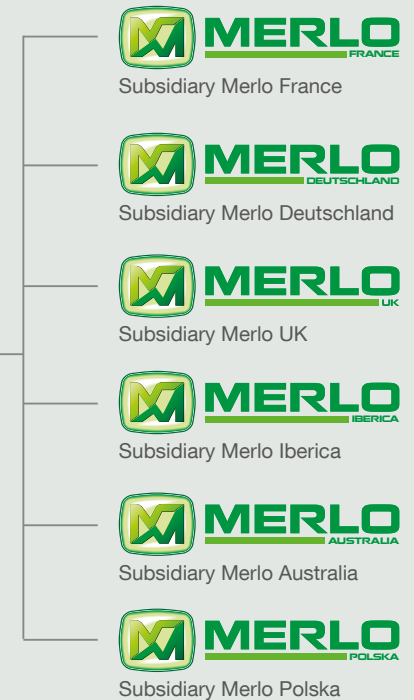
AGRICULTURE  
RANGE  
2014



CONSTRUCTION  
RANGE  
2019



ELECTRIC  
RANGE  
2021





**MERLO**

ADVANCED  
TECHNOLOGY  
SINCE 1964



# MERLO WORLD



New Automated Parts Warehouse	2016	2020
Capacity	13,000 cu. m	16,000 cu. m
SKUs handled (%)	86%	94%
Picking Time	30"	15"
Number of SKUs	20000	40000



## Marker leader



Merlo is **market leader** in Austria, Canada, Germany, Iceland, Israel and Italy. The Group also operates in over 50 markets around the world with 6 subsidiaries and more than 800 distributors

# COMFORT

## CAB - STANDARD AND SUSPENDED VERSION (CS) – MERLO PATENT

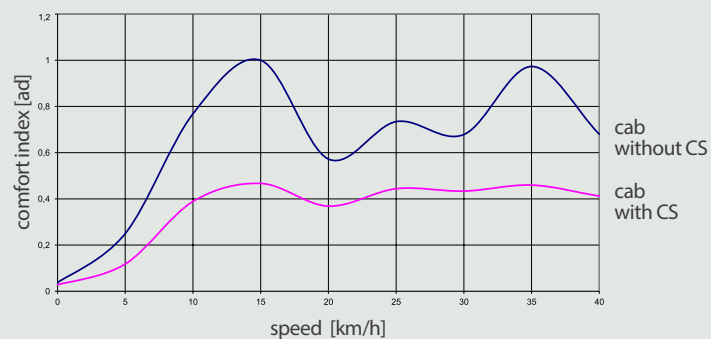
The cab is the largest on the market with an overall width of 1010 mm

A quick glance is all it takes to see that we are dealing with an outstanding cab with reference to concept, design and ergonomics. Just take a seat to feel at ease. Excellent accessibility thanks to the 770 mm door, ergonomic seat, tilting steering wheel and superb visibility in every direction including top side. The comfort is optimised with the suspended cabin.

A unique solution that only Merlo can offer in the market.

## THE FIRST AND ONLY SUSPENDED CAB IN THE TELESCOPIC SECTOR

### EXCELLENT COMFORT



## BOOM SUSPENSION SYSTEM - BSS

The boom can be suspended in order to have smooth movements during displacement with positive impact on the comfort level and eliminating the losses of load.

A hydraulic circuit with pneumatic pressure damper absorbs and reduces the shocks due to uneven ground. BSS system will be automatically switched off under 3 kph.

## FRAME LEVELLING SYSTEM

Along with the boom-side-shift the system allows the frame to be tilted, thanks to two hydraulic cylinders connected between the chassis and the front axle. In sloping conditions (max. 10%) the frame can be adjusted by the operator in order to raise the boom vertically, ensuring in this way the maximum safety working conditions.

### BSS system



5

## Largest cab in the category

1. ASCS: the patented Merlo safety system that provides new standards of safety.
2. New joystick with reverse shuttle (duplicated on steering wheel): ergonomic and easy to use.
3. New display makes it possible to display a great deal of useful information for the operator.
4. New air conditioning system in line with automotive standards for fast and effective heating/cooling.
5. Curved windscreen: maximum visibility and safety in work at height.

1

1

3

4

4

2

Overseas model shown

# SAFETY

• **ASCS:** with attachment recognition

• **Tac-Lock:** implement quick attaching system, controlled from the cab

• **Hydrostatic transmission:** dynamic breaking effect

• **Merlo telehandlers are fully compliant with the AS1418.19**

## ASCS- ADAPTIVE STABILITY CONTROL SYSTEM

The ASCS system manages the dynamic safety of our telehandlers thanks to an integrated computer that manages the load charts according to the attachment in use and to various operational parameters such as the carried load, the boom angle/extension/speed. Only the Merlo attachments can be recognized by the system thanks to sensor. All the safety information is clearly show in the colour display. An indicator on the load chart informs the operator about the dynamic equilibrium of the telehandler and the ASCS avoids risks for the longitudinal equilibrium of the machine by blocking movement if needed.



## BOOM AND TAC-LOCK SYSTEM

Merlo offers standard on all its telehandlers the quick and hydraulically controlled system to couple and locking of Merlo attachments. Another patented solution to increase your productivity and reduce the loss of time. The hydraulically powered extension mechanism is fully integrated in the boom sections in order to protect it from site damage.



## MERLO HYDROSTATIC TRANSMISSION

Merlo experience in the hydrostatic transmission guarantees quick shuttling, smooth and progressive acceleration and maximum safety with a dynamic braking effect when driving downhill and excellent traction in all conditions thanks to the permanent 4WD. To further enhance the precision in confined space the operator can use the "inching" system (standard on all Merlo models).

The hydrostatic transmission is connected to a two-speed gearbox.

## CVTRONIC GEARBOX

The CVTronic transmission interruption ensures smooth acceleration without torque interruption from 0 to 40 km/h. The transmission comprises two axial piston hydrostatic motors powered by the electronically-controlled hydraulic pump.

At low work speeds, they work together to provide maximum torque, with an increase of + 12% in comparison with conventional hydrostatic transmissions.

During transport, the second hydrostatic engine is automatically disengaged by the control system and the oil from the pump powers the main hydrostatic engine that pushes the machine to the maximum speed.



# EFFICIENCY AND VERSATILITY

• **Fuel consumption**  
with the **Merlo EPD**  
system

• **Stabilizers**  
designed for versatility

• **Side shift** system  
for optimum productivity

• **Three steering**  
**modes:** agility  
and productivity

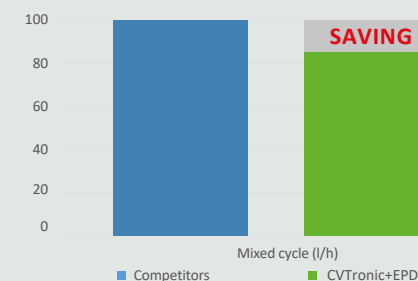
## EPD (ECO POWER DRIVE)

### Consumption reduction

EPD is a patented system to reduce consumption without limiting the telehandler. The EPD manages the diesel engine rpm separately by the accelerator pedal. The operator asks for a certain speed through the accelerator and the body computer manages the diesel engine accordingly. It's a unique and patented solution that increases the telehandler and reduces diesel consumption in such a way that > 3 litres per hour can be saved vs conventional engines systems.

## Reduction in consumption

Merlo CVTTronic technology + EPD



## STABILIZERS

In order to offer the maximum stability Merlo offers the Panoramic version equipped with stabilizers

The operator can control both stabilizers independently. On sloping grounds the boom can be raised vertically by the frame levelling system up to 24%. The stabilizers remain within the width of the machine ensuring the maximum compactness and at the same time optimum stability.

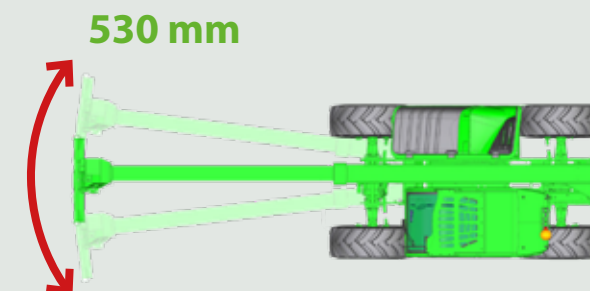


## BOOM SIDE SHIFT - MERLO PATENT

Best in class for flexibility & precision

A unique Merlo solution to enhance the operational precision of our telehandlers. The system allows the operator to move the boom laterally without having to displace or reposition the all telehandler.

A great time saving and increased precision.



# Merlo products are Australian Standards AS10896-1 and AS1418.10 compliant

## Safety comes first!

The whole Merlo product range sold in the Australian market and used in Australia is certified as meeting the required Australian Standards issued. The most popular Merlo telehandlers have been Tested and Certified following the latest Australian certifications.

The certification includes the design analysis, the stability and limiting device validation, according to specific load charts for Australia. In addition, the structural integrity design is checked. Therefore Merlo machines are delivered with a Certificate of Conformity issued by the Manufacturer "Merlo S.p.A" directly.

In addition and upon request, any Merlo Telehandler and its original attachments offered to our final customers can be provided with its proper specific "Design Verification" documents

The pictures shown below highlight the main specifications adopted by Merlo to meet the Australian market requests: È



Load Chart compliant with Australian standards



External longitudinal stability indicator



Lateral and longitudinal level indicators



Boom ram safety blocking device



Rear camera starts automatically when engaging the reverse shuttle.



Merlo ASCS (Adaptive Stability Control System) rated capacity limiter



Internal longitudinal stability indicator



Machine identification plate

Overseas model shown



# ATTACHMENTS

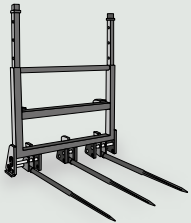
## Merlo attachments designed for top performance and safety standards

The largest range of Merlo attachments available in Australia

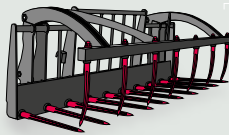


Merlo manufactures its own attachments according to Merlo quality standards thanks to the long experience made in 50 years of activity. Every attachment is designed in order to obtain the maximum working performance and efficiency. Since the cut in of ASCS – Adaptive Stability Control System – all Merlo attachments are equipped with a sensor. As soon as it is attached to the telehandler it sends the load chart to the ASCS system via a second sensor fitted on the front carriage. The ASCS is a user friendly system and provides the necessary information to the operator in order to prevent the boom movements to be blocked by the ASCS safety parameters. Merlo attachments are AS1418.19 compliant and listed on a plate shown on the cab LHS. Merlo implements are interchangeable by a quick attaching system. The attachment is locked to the fork carriage by means of a hydraulic system denominated Tac-Lock standard which is controlled from the cab, making the locking operations easier, safer and more comfortable.

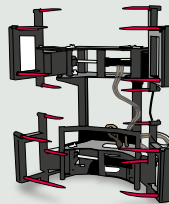
BALE FORKS



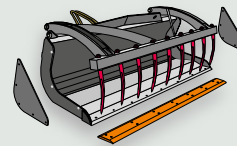
MANURE FORK WITH CRAB



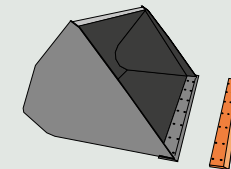
GRIPPERS FOR BALES



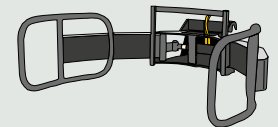
MULTI-PURPOSE LOADER WITH CLAW



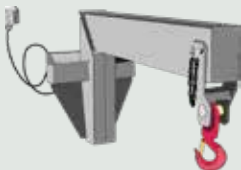
LOADERS



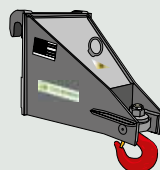
GRIPPERS FOR WRAPPED BALES



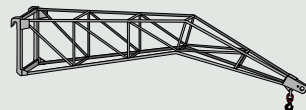
HOOKS/LIFTING BOOMS



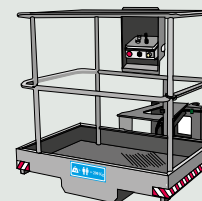
CARRIAGE-MOUNTED HOOK



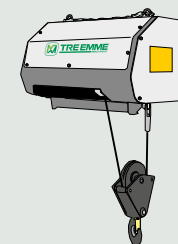
FLY JIB



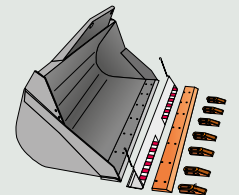
PLATFORMS



WINCH



DIGGING BUCKET



# MERLO PRODUCT

Overseas model shown

## Merlo products available for Australian market

Merlo is known for its wide range of products, high technology levels, innovative systems, outstanding quality and good value for price, and are **manufactured and customised to suit the Australian market.**

With Merlo's wide range of products and services you're sure to find exactly what you're looking for and above all you know with Merlo the customer always comes first!

MERLO RANGE	MODEL	Max. lifting height (m)	Max. capacity [kg]	Engine [kW/HP]	Speed [km/h]	Hydraulic system	Width (mm)	Height (mm)	Length (mm)	Stabilizers	Frame leveling	Boom side shift	ASCS	Engine Anti-pollution technology
Compact	P27.6AUPLUS	5,9	2,5	55,4/75,1	40	Gear	1860	2020	3910	-	-	-	YES	Stage IV
	TF33.7-115LEE <sup>(1)</sup>	6,5	3	85/115	40	LS+FS	2100	2020	4330	-	-	-	YES	Stage III
	TF30.9-115LEE <sup>(1)</sup>	8,5	3	85/115	40	LS+FS	2100	2020	4330	-	-	-	YES	Stage III
Medium	TF35.7-115EE	6,5	3,5	85/115	40	LS+FS	2250	2240	4310	-	-	-	YES	Stage III
	TF35.7CS-140 <sup>(1)</sup>	6,5	3,5	100/136	40	LS+FS	2250	2300	4310	-	-	-	YES	Stage V
	TF33.9-115EE	8,5	3,3	85/115	40	LS+FS	2250	2240	4330	-	-	-	YES	Stage III
	TF33.9CS-140 <sup>(1) (5)</sup>	8,5	3,3	100/136	40	LS+FS	2250	2300	4330	-	-	-	YES	Stage V
	TF42.7-115EE	7	4,05	85/115	40	LS+FS	2310	2530	4730	-	-	-	YES	Stage III
	TF42.7TTC-145 <sup>(2)</sup>	7,2	4,05	105/143	40	LS+FS	2310	2530	4730	-	YES	YES	YES	Stage V
	TF38.10-115EE	9,5	3,8	85/115	40	LS+FS	2310	2530	4760	-	-	-	YES	Stage III
	TF38.10TTC-145 <sup>(2)</sup>	9,5	3,8	105/143	40	LS+FS	2310	2530	4760	-	YES	YES	YES	Stage V
Tractor	MF34.7CS <sup>(3)</sup>	6,8	3	100/136	40	LS+FS	2240	2485	5440	-	YES	-	YES	Stage IV
	MF40.7CSEE	6,7	4	125/170	40	LS+FS	2350	2510	5310	-	YES	-	YES	Stage II
	MF40.9CSEE	8,8	4	125/170	40	LS+FS	2350	2510	5490	-	YES	-	YES	Stage II
High Capacity	TF50.8TCS-170-HF <sup>(4)</sup>	7,8	4,5	125/170	40	LS+FS+HF	2400	2590	4870	-	YES	-	YES	Stage V
	TF65.9TCS-170-HF <sup>(3)</sup>	8,8	6,5	125/170	40	LS+FS+HF	2400	2510	5260	-	YES	-	YES	Stage V
	P72.10EE	9,2	7,2	74/100	40	LS	2240	2500	5480	-	YES	YES	YES	Stage III
	P50.18HM <sup>(5)</sup>	17,5	5	125/170	40	LS+FS	2520	2850	6180	-	YES	YES	YES	Stage V
	P65.14HM <sup>(5)</sup>	13,5	6,5	125/170	40	LS+FS	2520	2850	5910	-	YES	YES	YES	Stage V
	P120.10HMEE	9,8	10	125/170	40	LS+FS	2520	2850	5720	-	YES	YES	YES	Stage II
Stabilized	P35.11 <sup>(5)</sup>	11	3,5	55,4/75	40	LS	2290	2530	5055	NARROW	YES	YES	YES	Stage V
	P40.13EE	12,5	4	74/100	40	LS	2240	2425	5410	NARROW	YES	YES	YES	Stage III
	P40.17EE	16,6	4	74/100	40	LS	2420	2500	5970	NARROW	YES	YES	YES	Stage III
	P50.18EE	17,5	5	74/100	40	LS	2480	2535	6190	NARROW	YES	YES	YES	Stage III
MERLO RANGE	MODEL	Total unloaden weight (kg)	Concrete yield capacity	Engine [kW/HP]	Drum volume (l)	Loading bucket volume (l)	Water tank capacity (l)	Drum rotation speed (rpm)	Maximum speed (km/h)	Maximum unloading height without chute	Engine Anti-pollution technology			
Dbm	DBM2500 <sup>(5)</sup>	6950	2500	74,4/100	3500	700	930	0-26	40	1760	Stage V			
	DBM3500 <sup>(5)</sup>	7300	3500	74,4/100	5000	700	930	0-18	40	2060	Stage V			

(1) Also available with standard cab. (2) Also available with standard cab, standard frame and CVTronic. (3) Also available with standard cab and CVTronic. (4) Also available with CVTronic and 11 m version. (5) Factory order only.



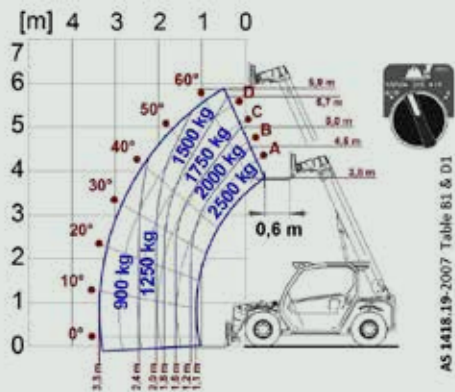
Overseas model shown

# COMPACT

## Concentrated power, small dimensions, big performances

Best comfort with the biggest cab of the category

P 27.6AUPLUS WITH FORKS



The reduced dimensions make these telehandlers ideal for work in restricted environments. The chassis architecture is innovative and the telescopic boom is extremely compact and built using the tried and tested Merlo system of having all the mechanical workings within the boom structure.

The extension components, hydraulic, and electrical systems are well protected within the boom structure.

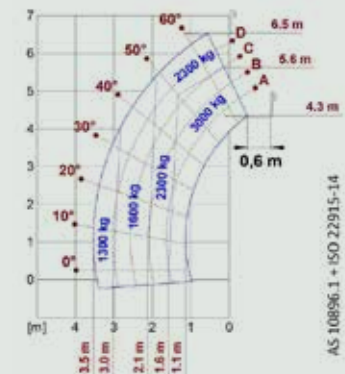
By not leaving parts on the exterior, damage caused by the inevitable knocks received on the work-site is avoided.

- ✓ Cab heights: 2020 mm (TF33.7 and TF30.9 also available with high profile cab: height 2120 mm)
- ✓ Attachments: dedicated attachments to make your work easier and increase your productivity
- ✓ Operator position: cab width 1010 mm for supreme comfort
- ✓ Wide-opening doors for easy access and improved operator comfort
- ✓ 5.9 m (P27.6), 6.5 m (TF33.7), 8.3 m (TF30.9) maximum lift height.

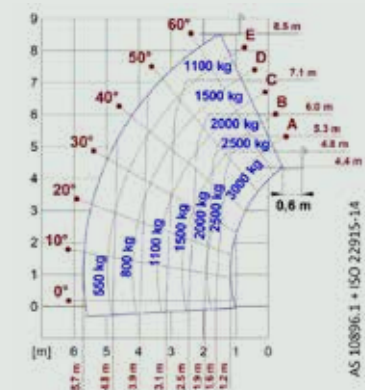
The compact series outperforms front loaders in terms of height, operating boom speed, and productivity

- ✓ Electronically controlled hydrostatic transmission: easy, practical, and intuitive
- ✓ P27.6 engine is equipped with Kohler Stage IV engine 54,4kW/75HP
- ✓ TF33.7 and TF30.9 version are equipped with Deutz Stage III 85kW/115HP
- ✓ Hydrostatic transmission: manoeuvre with inching precision
- ✓ Max. speed of 40 km/h and braking on all 4 wheels

TF33.7-115LEE WITH FORKS

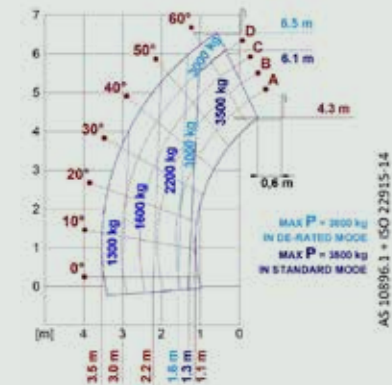


TF30.9-115LEE WITH FORKS

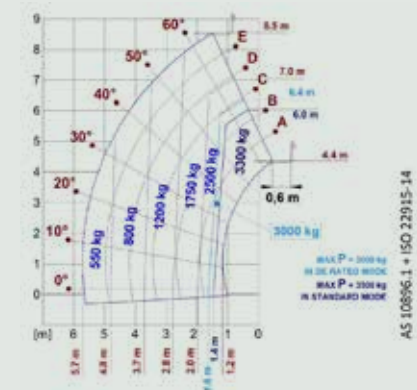




TF35.7-115EE/TF35.7CS-140 WITH FORKS



TF33.9-115EE/TF33.9CS-140 WITH FORKS



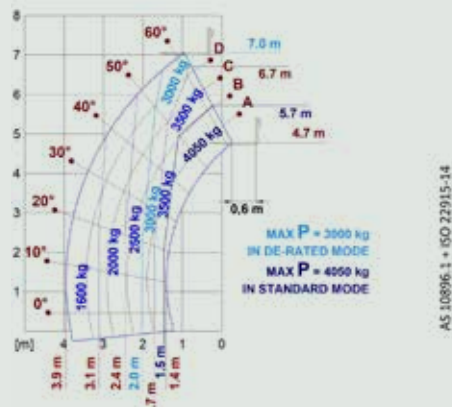
Overseas model shown

# MEDIUM DUTY

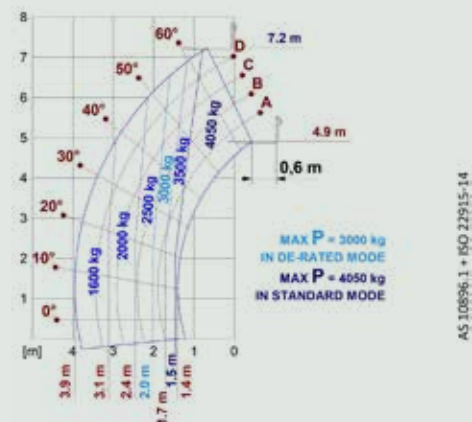
## Models designed for the Australian market

The best in class for compactness and productivity

**TF42.7-115EE WITH FORKS**



**TF42.7TTCS-145 WITH FORKS**

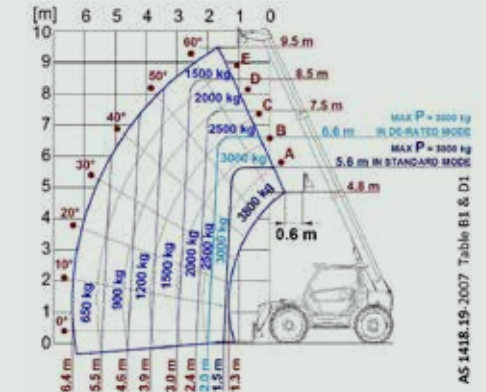


New Medium Duty range: 8 models with 3 boom dimensions (7, 9 and 10 metres) and load capacity from 3300 to 4050 kg.

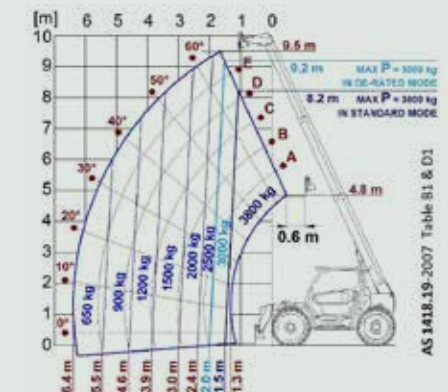
The engine and hydrostatic transmission are electronically controlled for better performance.

The transmission is also equipped with a two-speed mechanical gearbox designed to suit speed from zero to 40 km/h, it's also available the M CVTronic gearbox. Its low centre of gravity and correct weight distribution allow excellent stability and the permanent 4WD system allows for the best traction. Comfort is assured by a cab designed and manufactured by Merlo. 1010 mm cab width is the best in its class. The driving position and controls have been designed according to the latest ergonomic standards to ensure the maximum comfort.

**TF38.10-115EE WITH FORKS**



**TF38.10TTCS-145 WITH FORKS**



- ✓ Maximum lift height: 7, 9 and 10 metres are the most popular lift height
- ✓ Maximum load capacity: from 3300 kg to 4050 kg
- ✓ Three different engine powers are available: Deutz 85kW/115HP, 100kW/136HP and 105kW/143HP
- ✓ Engines and hydrostatic transmissions are electronically controlled
- ✓ Two-speed mechanical gearbox is designed to suit speed from zero to 40 km/h
- ✓ M CVTronic designed to accelerate 0 to 40 km/h without torque interruption
- ✓ BSS: boom suspension system for active dampening during material handling (opt)
- ✓ 3-Steering modes: operator can improve manoeuvrability and save time
- ✓ Cab: Merlo maintains its leadership in operator comfort, ergonomics and visibility
- ✓ Engine maintenance: access to main engines components for easy maintenance
- ✓ Medium duty: also available with fixed cab



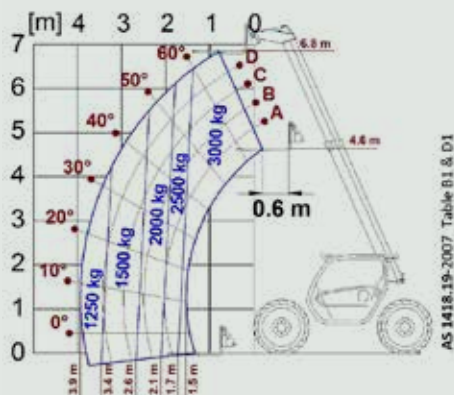
Overseas model shown

# TRACTOR

## Merlo's telescopic tractor

The world first crossover between a tractor and a telehandler

MF34.7CS WITH FORKS

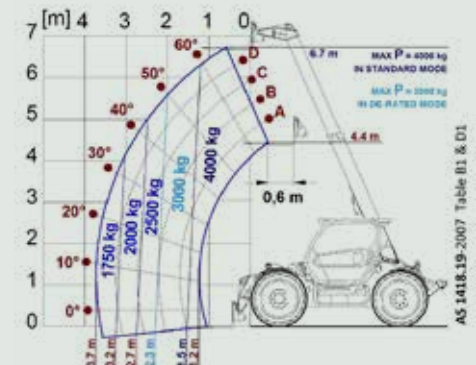


The Tractor family and its MF34.7CS, MF40.7CSEE and MF40.9CSEE models are telehandlers with booms capable of handling from 3.4 to 4 tonnes loads at 7 or 9 metres height. They are equipped with the CDC anti-tip over system and 136 or 170 HP EPD-controlled engines that reduce fuel consumption by 18%.

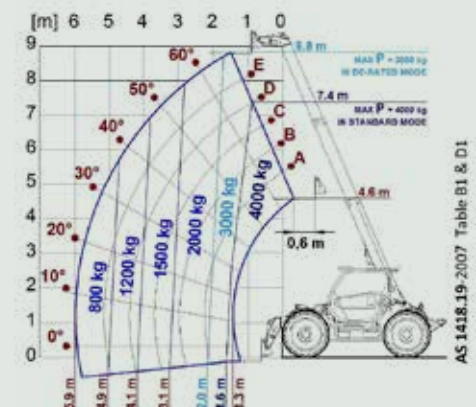
The Multifarmers can be used for handling materials as well as for conventional tractor applications. In fact, MF 3-point linkage, and PTO are designed to suit any implement used by conventional tractors, having the same power, for soil preparation and for haulage operations.

To ensure a perfect handling it can be also possible to lock the front or the rear axle with an electronic switch in cab.

MF40.7CSEE WITH FORKS



MF40.9CSEE WITH FORKS



- ✓ Suspended cab, the largest in the category, complete with multi-function armrests
- ✓ M CVTronic designed to accelerate 0 to 40 km/h without torque interruption
- ✓ Mechanical rear PTO: 540/1000, to suit any implements of this HP class
- ✓ Two or four external spool valves for rear mounted implements
- ✓ Three point linkage lifting: capacity up to 7000 kg
- ✓ Load capacities up to 4000 kg
- ✓ Hydraulic braking system or air braking system.
- ✓ Diesel engine with 136 or 170 HP
- ✓ Maximul lift height: 6.7 m and 8.8 m
- ✓ BSS: The boom suspension system provides greater payload stability, higher average speed and productivity



Overseas model shown

# HIGH CAPACITY

## The Turbofarmer High Capacity range

### High performance for emerging agricultural sectors



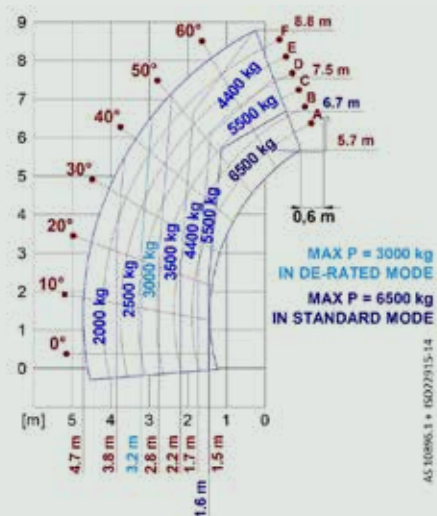
The Turbofarmer range expands with High Capacity models, new telehandlers for the agriculture sector - specially designed for emerging applications such as biomass handling, ceereal dry plant, agricultural industries.

These telehandlers offer exceptional comfort, with handling capacity from 4,5 to 6,5 tonnes and lifting height up to 11 m (version TF45.11TCS-170HF on request).

They feature new systems that improve, productivity, comfort and energy efficiency, with reduced fuel consumption thanks to the EPD system.

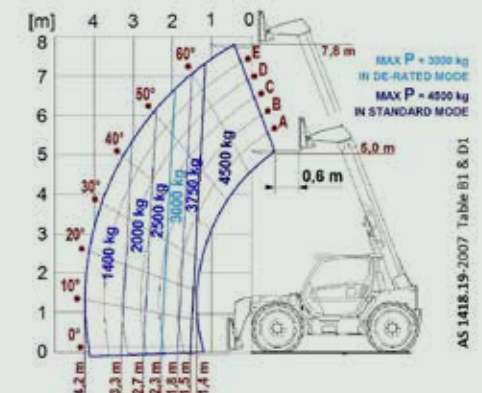
Front levelling, FOPS and ROPS cab and ASCS provide the highest safety standards for operators.

TF65.9TCS-170-HF WITH FORKS

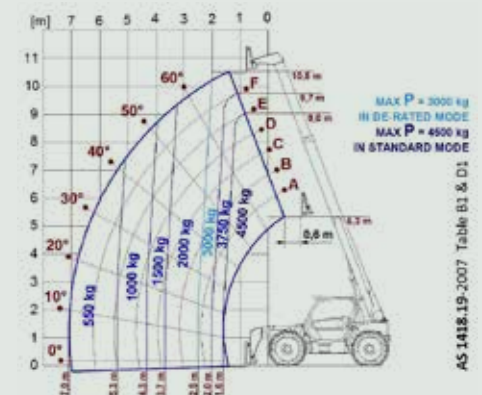


- ✓ M CVTronic designed to accelerate 0 to 40 km/h without torque interruption
- ✓ Level II ROPS and FOPS cab compliant
- ✓ ASCS load control as standard
- ✓ The widest cab in its category at 1010 mm
- ✓ CS suspended cab: a unique and patented solution
- ✓ -18% consumption with EPD as standard
- ✓ Diesel engines 170 HP
- ✓ Frame levelling on standard
- ✓ Towing hook up to 20 ton, hydraulic or pneumatic trailer braking systems (optional)
- ✓ Booms from 7,8 to 11 metres. Capacities from 4.5 to 6.5 tons
- ✓ Hi-Flow hydraulic system to ensure a faster boom movement

TF50.8TCS-170-HF WITH FORKS



TF45.11TCS-170-HF WITH FORKS





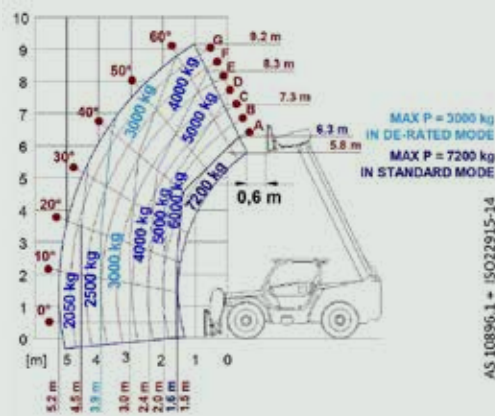
Overseas model shown

# HIGH CAPACITY

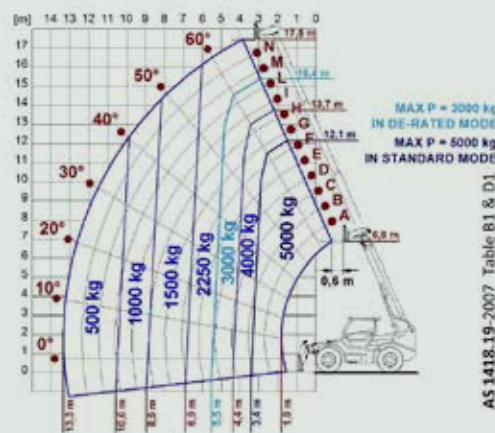
## Panoramic High Capacity range, high specifications for high performances

A complete range of products able to match all different customer needs

**P72.10EE WITH FORKS**



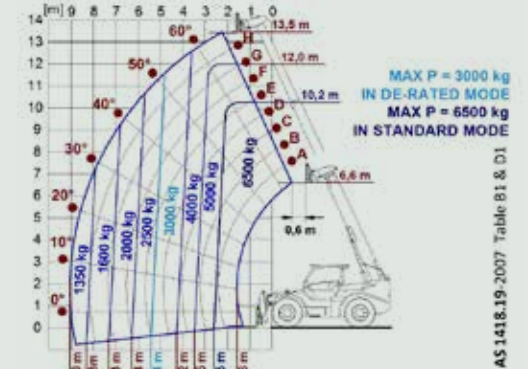
**P50.18HM WITH FORKS**



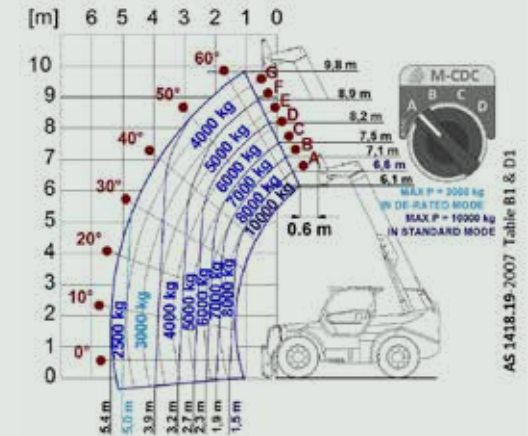
Merlo has other 4 distinct models in the high-capacity class: the first belongs to the high-end Panoramic range with lifting capacities of 7.2 tonnes in the 10 metre class (P72.10); the second, named HM, completes the offering with load capacities up to an impressive 10 tonnes with booms from 9.8 up to 17.5 metres (P50.18HM P65.14HM P120.10HM EE).

Since the latter is a specific family, the characteristics are also different.

**P65.14HM WITH FORKS**



**P120.10HMEE WITH FORKS**



- ✓ The largest cab in its category, the best comfort level
- ✓ Level II ROPS and FOPS cam compliant
- ✓ ASCS load control as standard
- ✓ Frame levelling and boom side shift as standard
- ✓ Hydraulic load sensing as standard
- ✓ Hydrostatic transmission with 2 speed gearbox
- ✓ -18% consumption with EPD
- ✓ HM power 170 HP
- ✓ CVTronic transmission (standard on HM)
- ✓ Regenerative system (standard on HM)
- ✓ Electronic Joystick with auto-revving and reversing system, duplicated on the steering wheel



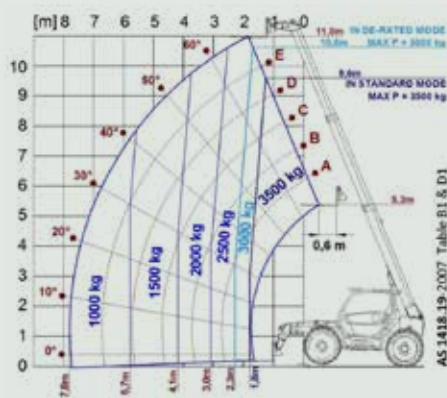
Overseas model shown

# STABILIZED

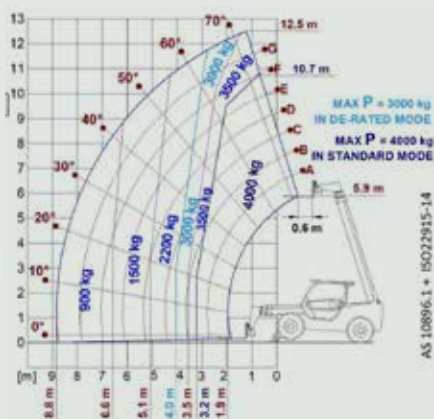
## Stabilized telehandlers

First in performance and reliability.  
Maximum stability within the minimum space!

**P35.11 WITH FORKS**



**P40.13EE WITH FORKS**

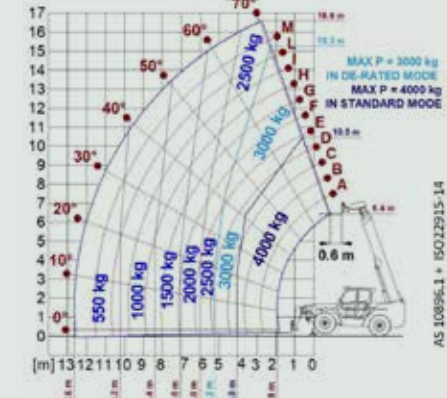


The unique Merlo design ensures good weight balance which, together with versatile drive/steer axles, extraordinary ground clearance, permanent 4WD and road travel at up to 40 km/h, ensure unrivalled driving ability in the most challenging of ground conditions. The Stabilized telehandlers feature a brilliant boom side-shift system uniquely developed by Merlo.

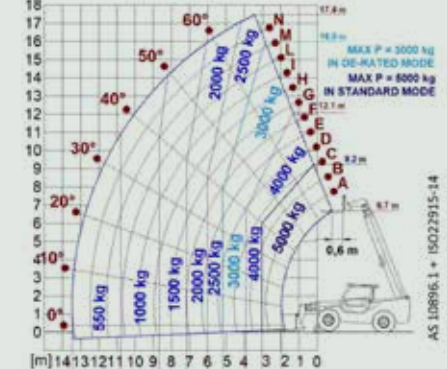
The operator controls the resulting sideways movement of the load with great accuracy. Two hydraulically operated stabilizers on the front axle ensure the necessary stability and allow the machine to be fully operational on uneven or sloping grounds. The operator can place the stabilizers independently upon the ground and use them to level the chassis.

- ✓ Maximum Load capacity: from 3500 kg to 5000 kg
- ✓ Maximum Lift Height from 11 to 17.5 m
- ✓ EE models are powered by 4 cyl. Engine 100 HP suitable power Stage III
- ✓ P35.11 model are powered by 4 cyl. Engine 75 HP suitable power Stage V
- ✓ Frame levelling system: allows the chassis to be horizontally levelled ensuring a truly vertical lift for better stability
- ✓ Front hydraulic stabilizers: independently controlled, improve the machines stability
- ✓ Boom side shift system: load can be placed with max. accuracy. It saves time and boosts productivity
- ✓ The boom suspension systems ensure maximum comfort
- ✓ Cab: it is the largest of this vehicle class with 360° visibility
- ✓ Fork carriage: allows attachments to be quickly interchanged by the quick attach system and locked using Tac-Lock controls in the cab

**P40.17EE WITH FORKS**



**P50.18EE WITH FORKS**





# DBM

With forty years of experience in the design and manufacture of self-loading concrete mixers, Merlo offers a **compact and efficient range which is ideal for places that are hard to reach** for the conventional concrete mixers or for those needing to **produce high quality concrete right at the building site**.

The DBM models make it possible to produce quickly at the work site mixtures of various types, from the most fluid mortars to low slump concrete, in the quantities requested and at the precise moment it is poured, with innumerable advantages compared to the traditional system of pre-packaged concrete.



## A proven technology for economic and efficient production, transport and pouring of concrete

2 models of self-loading concrete mixers with 2,5 m<sup>3</sup> and 3,5 m<sup>3</sup> capacity, with 700 litres loader

MODEL	DBM2500	DBM3500
Total unladen weight (kg)	6950	7200
Concrete yield capacity (Slump 8 cm max)	2500	3500
Drum geometrical volume (l)	3500	5000
Loader capacity (l)	700	700
Water tank capacity (l)	930	930
Water pump capacity (l/min)	250	250
Maximum unloading height without under conveyor chute (mm)	1760	2060
Drum rotation speed (rpm)	0÷26	0÷18
Turbo engine with low emissions Stage V	Deutz	Deutz
Power (kW/HP)	74,4/100	74,4/100
Steering mode	Four wheel drive with three steering modes	
Disc brakes on all four wheels	Automatically locking parking brake	
Maximum operating slope		
• unladen (%)	55	50
• fully laden (%)	45	40
Maximum slope (%)	15	15
1 <sup>st</sup> gear	11	11
2 <sup>nd</sup> gear	40	40
Width (mm)	2335	2335
Height (mm)	2880	3160
Length (mm)	6040	6480



**MERLO S.P.A.**

Via Nazionale, 9 - 12010 S. Defendente di Cervasca - Cuneo - Italia / Tel. +39 0171 614111 - Fax +39 0171 684101

***www.merlo.com - info@merlo.com***

**MERLO GROUP AUSTRALIA PTY LTD**

27 Colin Jamieson Dve, Welshpool (Perth), WA 6106 / Tel. (08) 9358 3110 - Fax (08) 9358 4110

120 Toongabbie Road, Girraween, NSW 2145 / Tel. (02) 9688 0600

***www.merlo.com - info@merloaustralia.com.au***

# TELEHANDLERS



*The telehandlers illustrated in this document may be equipped with optional or special accessories that do not form part of the standard supply but which are available on request.  
In some countries certain models or attachments may not be available as a result of market restrictions or regulations. The technical data and other information in this document were correct at the time of printing; however, we reserve the right to modify our products, without prior notice, as part of our policy of continuous technical improvement.  
Your Merlo dealer will be pleased to provide you with the latest information on all our products and services.*

**MKT MERLO • AU RANGE 0721**