

# CHAMPION IN ITS CLASS

RELIABLE  
COST EFFECTIVE  
PRODUCTIVE



## COMPACT EXCAVATORS

# SY135C

Product Specifications

OPERATING WEIGHT

**13,800 kg**

GROSS POWER

**73 kW / 2000 rpm**

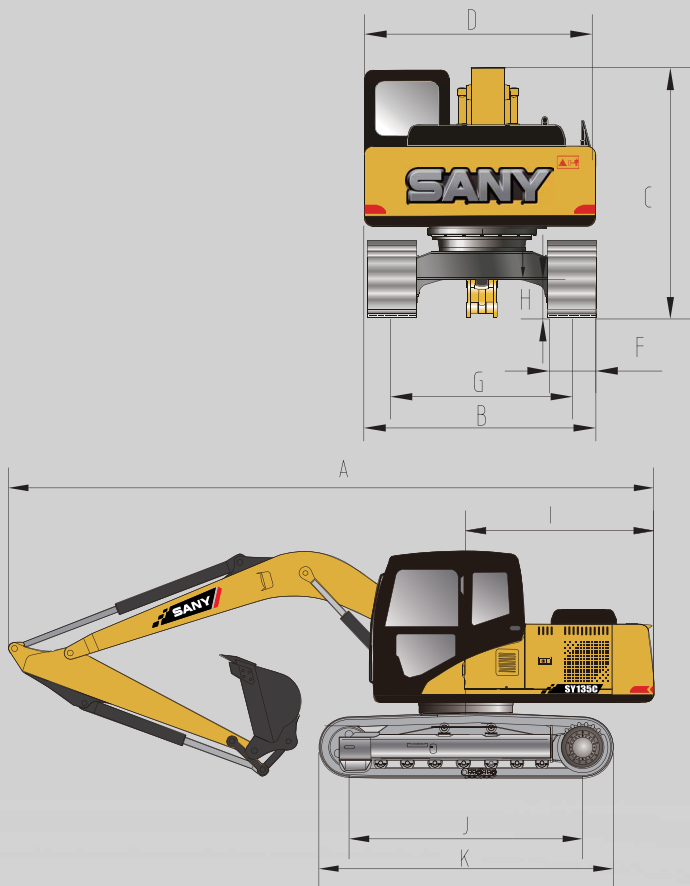
BUCKET CAPACITY

**0.6m<sup>3</sup>**

ENGINE

**Isuzu AJ-4JJ1XT3**

## OVERALL DIMENSIONS



ITEM	mm
A Transport Length	7700
B Transport Width	2490
C Transport Height	2815
D Upper Structure Width	2490
E Blade Height	458
F Standard Track Shoe Width	600
G Track Gauge	1990
H Min Ground Clearance	425
I Tail Swing Radius	2205
J Center distance of tumbler	2930
K Track Length	3665
Boom Length	4600
Arm Length	2500

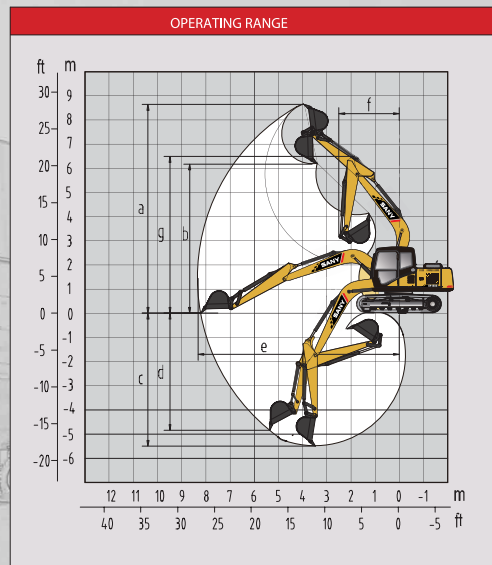
UNDERCARRIAGE	
Track shoe width (mm)	500
Track roller (per side)	7
Carrier roller (per side)	2

## WORKING RANGE

ITEM	mm
A Max. Digging Height	8645
B Max. Dumping Height	6173
C Max. Digging Depth	5500
D Max. Vertical Digging depth	4850
E Max. Digging Reach	8290
F Min. Swing Radius	2500
G Height at Min. Swing Radius	6500

### MACHINE PARAMETERS

Operating Weight	13800 kg
Engine Type	Isuzu AJ-4J1 XT3
Engine Max Power (Gross)	73 kW @2000rpm
Engine Max Torque	378 Nm @1600rpm
Engine Displacement	3 Litre
Swing Speed	12 rpm
Travel Speed	5.5 /3.5 km/h
Tractive Effort	110 kN
Bucket Digging Force	92 kN
Fuel Tank Capacity	240 Litre
Hydraulic Tank Capacity	150 Litre
Cooling System Capacity	22 Litre
Engine Oil Capacity	13.2 Litre
Ground Pressure	41.7 kPa



Material and specifications are subject to change without notice.  
Feature machines in photos may include additional equipment.



1300 BROOKS (276 657)

@ service@brooksequipment.com.au

www.brooksequipment.com.au

**BROOKS**  
EQUIPMENT