



Size 0	Size 1	Size 2	Size 3	Size 4
22 x 31 mm	24 x 40 mm	31 x 41 mm	27 x 54 mm	57 x 76 mm
762 x 1024 Pixels	792 x 1321 Pixels	1024 x 1354 Pixels	891 x 1783 Pixels	2730 x 2049 Pixels
Memory size 1Mb	Memory size 2Mb	Memory size 3Mb	Memory size 4Mb	Memory size 9Mb

TECHNICAL SPECIFICATIONS

Resolution (theoretical)	17 lp/mm
Image pixel size	30µm
Image grey levels	16 bit (65,536 grey levels)
Supported plate sizes	Size 0, 1, 2, 3, 4
Plate size selection	Automatic
Read time	4 – 12 s
Plate deletion	Automatic
Dimensions (H x L x D)	224 x 163 x 290 mm
Weight	5.7 kg
Power supply	110 - 240 V 50/60 Hz (24 Watts)
Connectivity	ETHERNET direct to PC or in LAN
Acquisition software (for PC)	iCapture with aMUT interface for third party software
Image management software (for PC)	NNT (compliant with ISDP® 10003:2018 in accordance with EN ISO/IEC 17065:2012 - certificate number 2019003109-1) and iPad NNT viewer App (free)
Supported protocols	DICOM 3.0, TWAIN, VDDS
DICOM nodes	IHE compliant (Print; Storage Commitment; SR document; WorkList MPPS; Query/Retrieve)

MINIMUM SYSTEM REQUIREMENTS

Supported operating systems:	Microsoft® Windows® 10 Professional 64 bit
Display settings	1280 x 1024; 1344 x 768 or greater, 16 million colours
Port	PC Server: RJ 45 PC Client connected in LAN

Specifications subject to change without prior notice.



newtom.it



BU Medical Equipment

Sede legale ed amministrativa
Headquarters

CEFLA s.c.

Via Selice Provinciale 23/a • 40026 Imola • Italy
t. +39 045 8202727 • 045 583500
info@newtom.it

Stabilimento Plant

Via Bicocca, 14/c
40026 Imola - Bo (Italy)
tel. +39 0542 653441
fax +39 0542 653601

07/2021 NVSCAGBZ 11500
According to the standards in force, in extra-EU areas the availability and specifications of some products and/or characteristics may vary. Please contact your local distributor for further information. Pictures are for illustration purpose only.

NewTom X-PSP PET.VISION

CR SYSTEM FOR ODONTOSTOMATOLOGY DIAGNOSIS



Cone Beam 3D Imaging
NewTom VET
what's next

CUTTING-EDGE QUALITY.

High quality X-rays in every application thanks to Adaptive MultiVision mode which uses innovative filters to optimise image yield.

NewTom X-PSP is the CR (Computed Radiography) system that combines advanced digital diagnostic technology with the advantages of traditional film plates. Stylish and compact, the system is quick and simple to use and provides high definition images with a resolution of up to 34 pixel/mm.

Once the plate of the selected size is positioned, either in the mouth or on the limb to be diagnosed, the X-rays are taken. If the clinic is a multi-surgery establishment then the reader can be booked for acquisition. Inserting the plates in the reader one at a time, the high definition images are acquired and then transferred to the local PC and/or sent to the client who reserved the reader; images can immediately be consulted, shared and saved with NNT software or another viewer, printed and e-mailed.

INTRAORAL, EXTRAORAL AND ORTHOPAEDIC VETERINARY DIAGNOSTIC APPLICATIONS FOR SMALL ANATOMICAL AREAS

Compatible with 5 sizes for the acquisition of images with a pixel size of 30µm.



SIZE 0



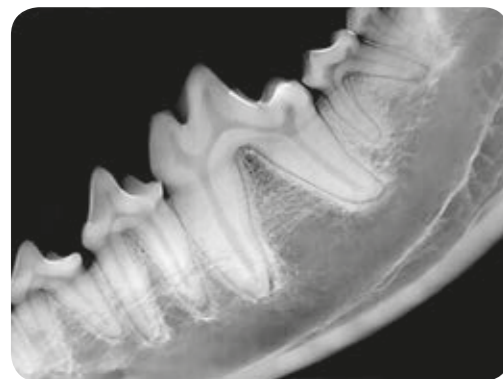
SIZE 1



SIZE 2



SIZE 3



SIZE 4



SIZE 4

MULTIPLE DIAGNOSTICS – APPLICATIONS

Five different plate sizes let users take intraoral X-rays or obtain X-rays of small anatomical areas such as limbs of reptiles or small rodents, all within a very short time span. The system applies the Hi.Res technology (17 lp/mm) that provides accurate high definition images with outstanding contrast, ensuring reliable diagnosis.

NEWTOM ADAPTIVE MULTIVISION

Innovative NewTom ApT (Adaptive Picture Treatment) filters have been developed to allow ever-more effective, accurately targeted diagnosis. Thanks to proprietary algorithms optimized for phosphor film plates, this function provides, with each acquisition, a set of images (up to 5) that has been specifically improved to highlight anatomical details with different levels of sharpness. With NNT software, X-PSP lets the vet adopt more advanced, versatile image processing filters in Adaptive MultiVision mode.



NNT CONNECTIVITY.

Maximum connectivity and integration thanks to the modern systems adopted by NewTom. Ever-simpler, better-performing clinical and diagnostic workflows.

A fully automated workflow for fast diagnosis. Import data from any network workstation thanks to the ETHERNET connection.

Save and display captured X-ray images on the PC using all-in-one NNT diagnostic software featuring the VET diagnostic interface with the convenient iPad viewer app or with any other control programme or image viewer with a TWAIN or DICOM interface.

INTERFACE WITH MANAGEMENT SYSTEMS

An open system designed for fast, efficient interfacing with the main veterinary clinic management software solutions via various standard (VDDS, TWAIN) and/or proprietary (NNTBridge) modes. IHE conformity allows communication with RIS/PACS systems and DICOM printers. Complete set of services available: Print, Worklist, Storage Commitment, MPPS and Query/Retrieve.

REMOTE ASSISTANCE

Configuring the X-PSP to use the veterinary clinic's internet connection makes it possible to monitor the device and perform any remote technical servicing.

IMAGE SHARING

Exams can be shared with colleagues and pet owners by providing the display programme directly on CD, DVD or USB storage device or by sending them in digital format.

MULTI-STATION DISPLAY AND PROCESSING

Image storage on a shared database in a local network that is accessible from any workstation or iPad. Management of multiple archives and access to password-protected data.



WORKFLOW OPTIMISATION



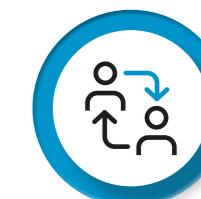
01
POSITIONING
AND CAPTURING



02
RESERVATION
AND SCANNING



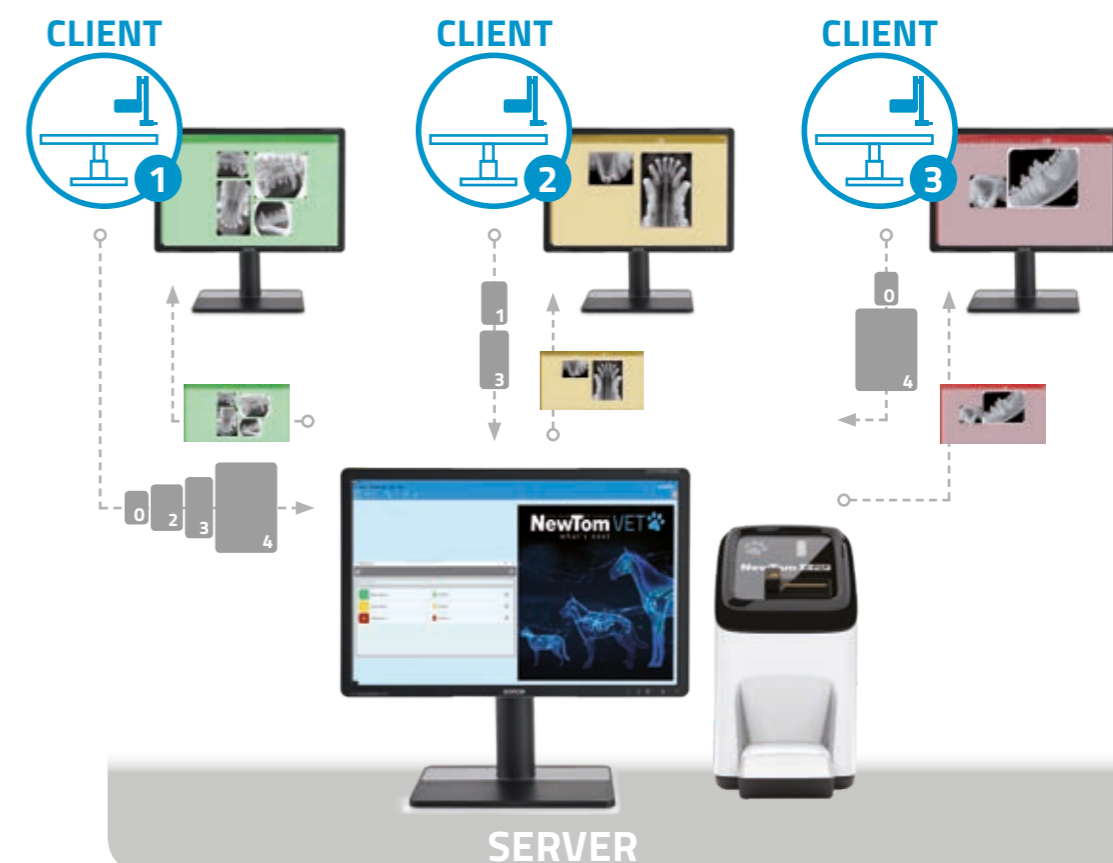
03
DISPLAY
AND PROCESSING



04
SHARING
AND STORING

ADAPTIVE MULTI-USER TECHNOLOGY (aMUT)

X-PSP optimises workflows in multi-room veterinary surgeries. Thanks to the adaptive Multi-User Technology function, the remote read system (connected to the server PC) can be managed with reservations made directly from the workstation (Client PC). The patient is defined by a name and the colour of the surgery. Available in iCapture, the app automatically saves a series of remotely scanned images in the medical records of the patient who was pre-selected in NNT from the surgery where the reservation is made. These images will immediately be displayed on the Client PC and it will therefore be possible to show them to the pet owner in real time.



ERGONOMIC AND VERSATILE.

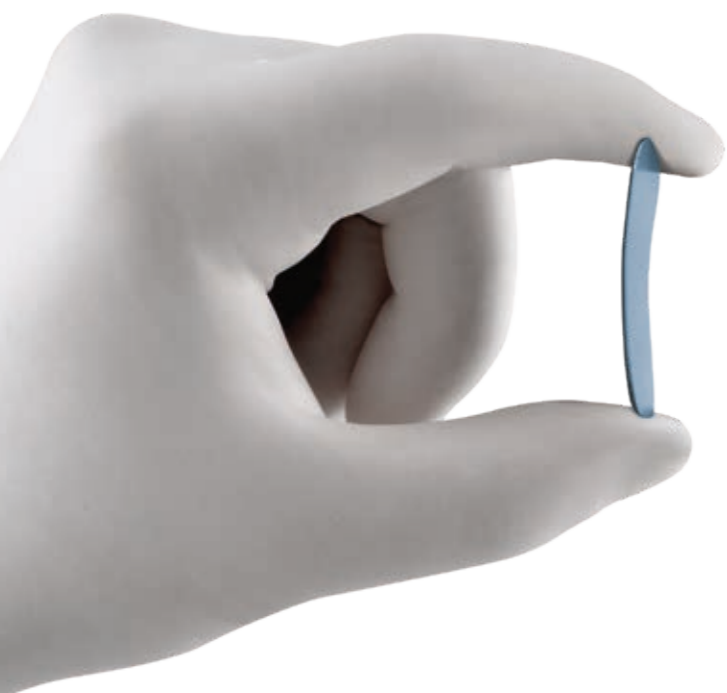
Compact and well designed, X-PSP applies automatic plate size recognition technology to speed up the acquisition process.

Designed to take up as little space as possible in the veterinary clinic, the X-PSP reader can be installed in the position that best suits personnel. The removable drawer has been designed to maximise reader compactness also when it is installed and the 45° angle of the upper part of the device makes plate insertion easier.

Phosphor plates ensure the same flexibility of use and comfort as dental film. They also have the clear advantage of being reusable and ensuring excellent, long-lasting diagnostic quality. Compared to traditional film, the X-PSP system offers the advantage of fast image display directly in digital format, zero processing costs and greater workflow efficiency.

SMART ACQUISITION (AUTO-READ TECHNOLOGY)

The plate consists of a phosphor layer and a magnetic layer that speeds up the reading process with an automatic acquisition sequence start. Plate size recognition is also automatic; the plate is extracted from its protective wrapping inside the reader, shielding it from any exposure to light or hand contact. The highly dynamic system and the correction of any over- or under-exposure minimise the risk of having to re-scan.



BETTER ERGONOMICS

Thin, flexible and without any positioning limits, the plates have 100%-equivalent active area.

ECO DOSE

Thanks to ultra-high plate sensitivity, images of optimum quality can be captured with minimum X-ray doses.



WALL-MOUNT OPTION

The X-PSP is suitable for any surgery. It can be placed on a horizontal worktop or wall-mounted with a bracket.

STATUS LED

A luminous indicator positioned above the plate slot provides instantaneous information on reader status.

ETHERNET CONNECTION

Fast, secure image transfer to the PC next to the workstation or directly from the server with adaptive Multi-User Technology.

REMOVABLE DRAWER

Lets users collect and carry the just-used plates with ease.

PLATE HOLDER ORGANIZER

Solution allowing tidy storage of plates until they are ready to be used.



AUTO-READ TECHNOLOGY FAST IMAGE DISPLAY

X-PSP auto-read technology ensures fully automatic acceptance and scanning of exposed plates. To maximise efficiency, the system recognises the size, imports the image into the PC and deletes plate data so it is ready for the next acquisition.

The X-PSP ensures ultra-fast display of images that are always sharp. This increases diagnostic efficiency and enhances communication with animal owners.

