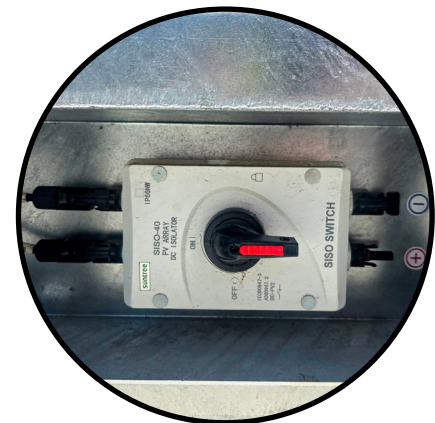
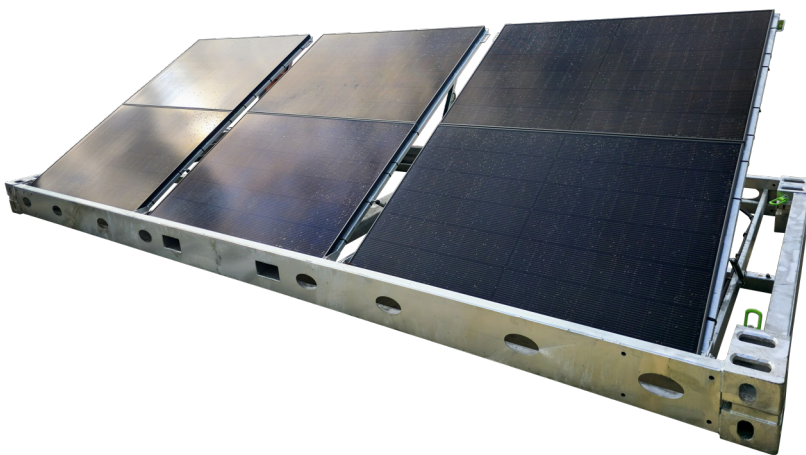
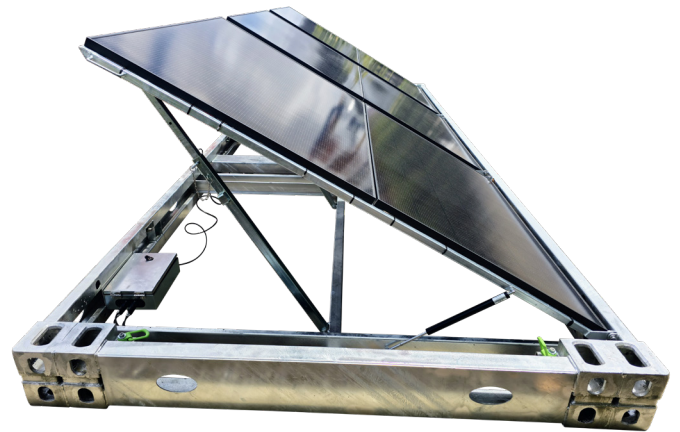


Our patented rapid deployment solar skid is a modular unit that can be scaled to suit any requirement. Deployed in minutes to suit temporary use such as after bushfires or floods or on construction projects to minimise install/removal time and site impact.

The container solar skid can be adjusted from zero to 45 degrees making it ideal to use in different regions to maximise solar yield. Constructed on a hot dip galvanised frame to ensure a long service life and structural rigidity.



PRODUCT SPECIFICATIONS

FEATURES

Model	STSS2k5 - Solar Skid
Mounting	Twist locks
Solar Tilt Angle	0°, 10°, 20°, 30°, 40°, 45° one man lift
Transport	Forklift ports, Interlocking stacking
Deployment	1 per 20' container, 2 per 40' container
Safety	PV Isolator with MC4 Connectors

GENERAL

Power	2.5kWp
Voltage (Voc)	138.8v
Current (Isc)	27.4A

UNIT

Dimensions (HxWxD)	320 x 6055mm x 2440mm
Weight	950kg
Per 40' flat bed	20
Rapid Deploy	

