

DIECI
AUSTRALIA

APOLLO SMART | 20.4





APOLLO SMART 20.4

COMPACT SIZE, BIG PERFORMANCE

Dieci's Apollo Smart 20.4 is engineered to master tight, demanding work sites without compromising on lifting power, reach, or operator comfort. Compact yet robust, this new-generation telehandler delivers productivity, versatility and reliability, all in one agile machine.

The Apollo Smart 20.4 offers impressive lifting capacity, reach, and operator comfort in a compact frame. The machine delivers high performance where space is limited, making it the ideal solution for urban construction, maintenance, and trades applications.

As the most compact model in Dieci's construction telehandler range, the Apollo Smart 20.4 offers superior manoeuvrability while maintaining powerful, precise operation. The spacious cab enhances operator comfort, while its three steering modes; front, concentric, and transverse, ensure smooth handling.

With a newly upgraded dashboard and intuitive controls, the Apollo Smart is built for efficiency and ease of use. Its advanced engine and transmission deliver the perfect balance of power and fuel economy. Combined with Dieci's patented design features, the Apollo Smart offers reduced maintenance demands and increased durability, making it a cost-effective investment.

ABSOLUTE COMFORT:

ITALIAN DESIGN AND STYLE

Dieci telehandlers have always been a combination of **comfort** and **functionality** which makes us stand out all over the world.

Built For Tight Spaces

When space is limited and precision is critical, the Apollo 20.4 Smart steps up. With an unladen weight of just 4,300kg and a compact footprint, it easily navigates constrained job sites while lifting up to 2,000kg. The machine offers a maximum lifting height of 4.35m and a horizontal reach of 2.67m, supported by a 133° fork swivel angle for flexible, precise handling.

Smart Control & Comfort

Equipped with three steering modes including 2WS, 4WS, crab steer, and a proportional joystick; the Apollo 20.4 Smart allows effortless control, even under full load. The redesigned ergonomic cab features large windows for all-round visibility and a streamlined dashboard for intuitive operation. Operators benefit from a quiet, comfortable working space, ideal for long hours on-site.

Performance That Delivers

A 37kW Kubota engine powers this small giant, enabling top speeds of 25km/h with smooth hydrostatic transmission. The Apollo Smart 20.4 features a patented tilting ballast system and 90° rotating radiator for improved maintenance access and cooling efficiency. With its exceptional climbing capacity of up to 56%, the machine handles rough terrain with confidence.

Versatility For Every Task

From construction to landscaping, warehousing to recycling, the Apollo 20.4 Smart handles a wide range of applications. Compatible with an extensive array of attachments including buckets, jibs, forks, and work platforms, it's a single-machine solution for multiple job types.

Dieci Quality & Support

Proudly designed in Italy's renowned Motor Valley, Dieci telehandlers combine innovation, durability and after-sales reliability. Backed by Dieci Australia's nationwide service and parts network, the Apollo Smart 20.4 is more than a machine, it's a smart investment.



Apollo Smart 20.4

4.35m

Max Reach

2,000kg

Max Capacity

50hp / 37kW

Nominal Power

Unparalleled Manoeuvrability

With three steering modes including 2WS, 4WS, and crab steer; the Apollo Smart 20.4 offers exceptional manoeuvrability. It handles tight turns and tricky terrain with ease, even under full load. The hydrostatic transmission and smart steering make it responsive and efficient.

Hydraulic Flow Share

Operate multiple hydraulic functions simultaneously for peak productivity. The Apollo Smart 20.4's proportional joystick allows for seamless control of boom lift, extension, and fork positioning; minimising downtime and boosting work-flow efficiency.

Total Visibility

Designed for safety and ease of use, the panoramic cab features a 360deg view of your surroundings. Whether lifting, loading, or manoeuvring, the operator remains fully aware of their environment.

Maximum Safety

Safety is built in. The cab is ROPS-FOPS certified and includes a dead-man sensor and operator presence detection in the seat to prevent unintentional operation. A load limiter actively monitors vehicle stability and restricts unsafe movement beyond safe parameters.

Sturdy Chassis

Dieci's renowned build quality ensures the Apollo Smart 20.4 is built tough. The reinforced frame and boom deliver long-term durability, even in the harshest conditions.

Top Level Performance

Equipped with a 37kW Kubota engine, the Apollo Smart 20.4 reaches speeds up to 25km/h. It lifts up to 2,000kg with a maximum height of 4.35m and a forward reach of 2.67m. Its 133° fork swivel and 56% grade-ability ensure capability across diverse site conditions.

Perfect Climate

Standard with heating and air conditioning, multiple vents ensure optimal cabin conditions in any weather. Operators stay comfortable and alert, no matter the job-site or season.

Absolute Comfort

The spacious, ergonomically designed cab features intuitive controls, a reconfigured dashboard, and all-round visibility through large windows. With quiet operation and a streamlined control layout, the Apollo Smart 20.4 makes long hours feel lighter.

Ease of Access

With an adjustable steering wheel, suspension seat, and accessible cabin layout, entry and operation are smooth. Its compact profile fits easily into tight areas while offering the comfort expected from a full-sized machine.

4-in-1 Joystick

The single-lever joystick integrates boom control, proportional speed, and FNR (forward-neutral-reverse), putting complete control in one hand for effortless operation.



TECHNICAL DATA

PERFORMANCE

Maximum capacity	2,000 kg
Maximum lifting height	4.35 m
Maximum horizontal extension	2.67 m
Fork swiveling angle	133 °
Pull-out force	3365 daN
Towing force	3177 daN
Maximum climb angle	56 %
Unladen weight	4,300 kg
Maximum speed	25 km/h

ENGINE

Brand	Kubota
Nominal power	50 hp / 37 kW (@ 2,700 rpm)
Operation	4-stroke / diesel
Injection	Electronic, common rail
Number and arrangement of cylinders	3, vertical inline
Displacement	1,826 cm ³
Emission standard	Stage V
Cooling	Liquid
Intake	Turbo compressor

TRANSMISSION

Type	Single speed hydrostatic transmission with variable displacement pump
Hydraulic motor	Hydrostatic with continuous automatic adjustment
Reversal	Electro-hydraulic
Inching control	With hydraulic pedal for controlled forward movement

HYDRAULIC SYSTEM

Hydraulic pump type	Gear pump for power steering and movements
Hydraulic pump capacity	93.6 l/min
Maximum operating pressure	25 MPa (3,626 psi)
Boom hydraulic sockets	With quick couplings with continuous oil function
Distributor control	4 in 1 proportional joystick with FNR
Distributor type	Single lever hydraulic proportional

TANK CAPACITIES

Hydraulic system	70L
Diesel tank	60L

DIFFERENTIAL AXLES

Steering axles	2 steering, with 4 epicyclodial reduction gears
Type of steering	4 wheels / transversal / 2 wheels
Service brake	Dry disc on rear axle
Park brake	Manually activated on brake caliper through cable

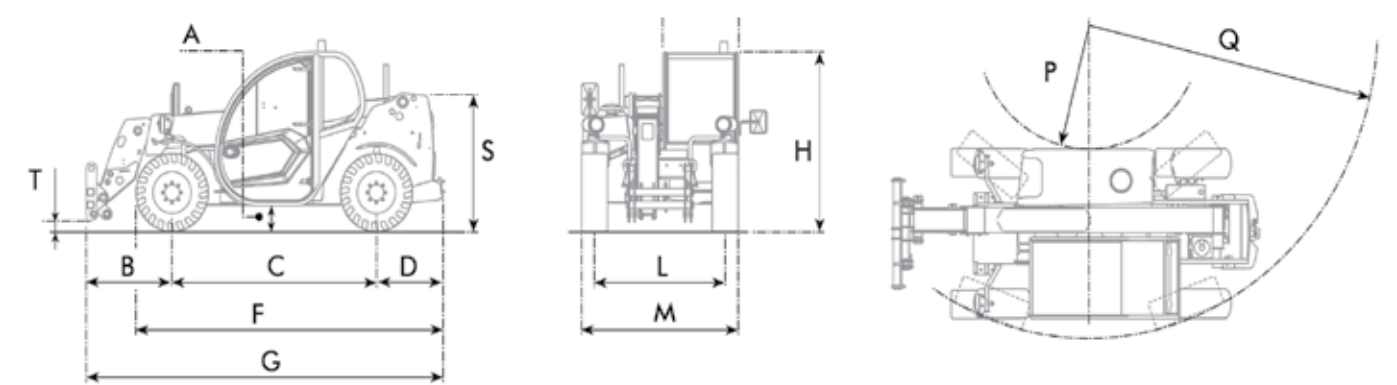
TYRES

Size	12 x 16.5"
------	------------

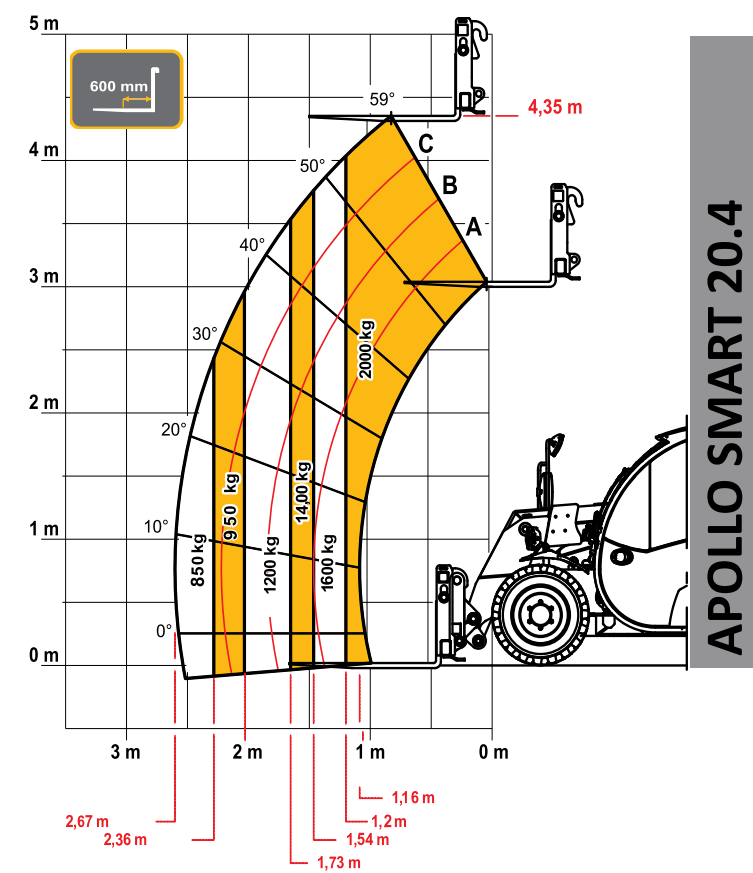
APOLLO SMART 20.4

DIMENSIONS

A	199 mm
B	827 mm
C	2,250 mm
D	458 mm
F	3,405 mm
G	3,534 mm
H	1,929 mm
I	860 mm
L	1,230 mm
M	1,550 mm
P	1,340 mm
Q	3,075 mm
S	1,469 mm
T	200 mm
U	1,550 mm



LOAD CHART





NEW SOUTH WALES

Sydney Branch

1/5 Melito Court,
Prestons, NSW 2170

WESTERN AUSTRALIA

Perth Branch

32 Allott Way,
Maddington, WA 6109

VICTORIA

Melbourne Branch

169 Studley Court,
Derrimut, VIC 3026

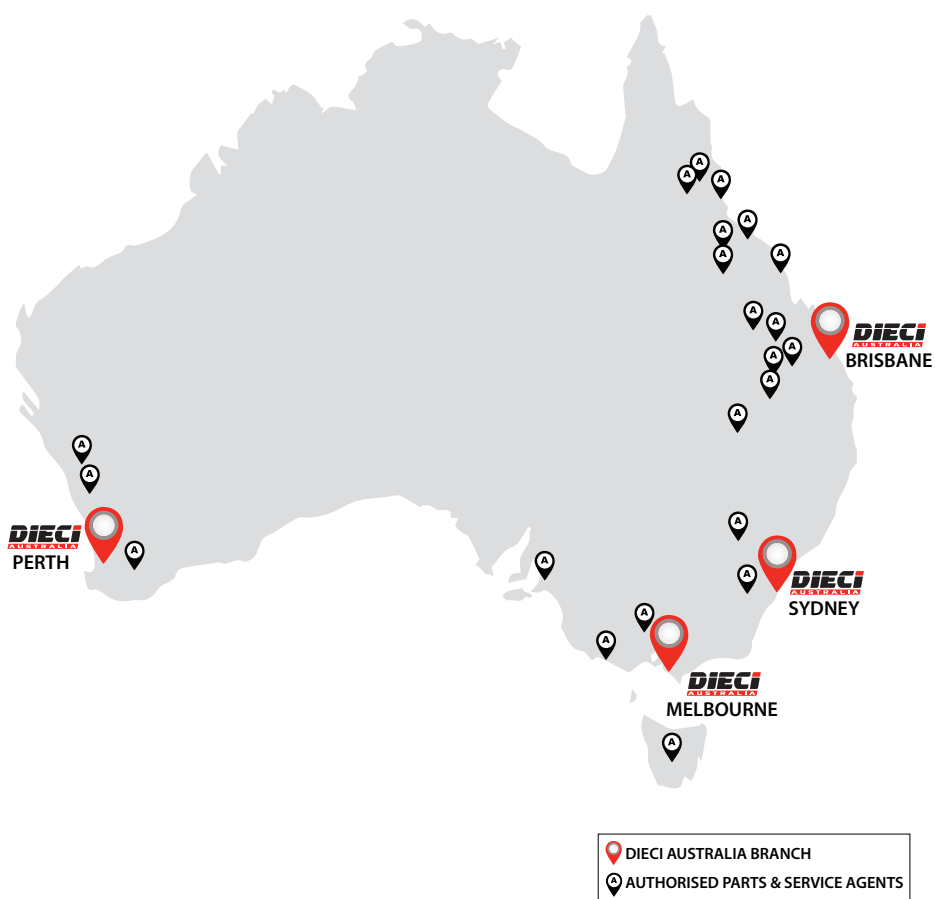
QUEENSLAND

Brisbane Branch

1/7 Australand Drive,
Berrinba, QLD 4117

Brisbane North Branch

69 Griffin Crescent,
Brendale, QLD 4500



www.dieciaustralia.com.au | ph: 1300 888 479 | sales@dieciaustralia.com.au

Distributed by Dieci Australia

Illustrations and photos show the standard international models and may or may not include optional equipment, accessories, customer installed or modified parts, optional parts and all standard equipment with some differences in colour and features. Machine specifications are subject to change without notice and additional load charts and machine or attachment specifications may be available on request. Please refer to the user and maintenance manuals located on Dieci Australia's website for correct machine and attachment operation.

Printed in Australia

V1125