

Dehumidification and ventilation for swimming pools, industries, light commercial and cellars



MADE IN ITALY



HiDew is proud to present a huge range of dehumidifiers for industrial processes, public and private pools, with a high efficiency heat recovery and air renewal system. Every HiDew dehumidifier and recovery system has been designed to respond to an increasingly demanding market in terms of technology, reliability, design, compactness, efficiency, sound level, simplicity and installation ease.



QUALITY FOR YOUR WELLBEING

HiDew

Dehumidifiers

Wall mounted dehumidifiers



DDS

P. 4

Wall mounted dehumidifiers for technical room



DCS

P. 6

Vertical floor-standing dehumidifiers



DVS

P. 8

Horizontal dehumidifiers for ducted installation



DOS

P. 10

Dehumidifiers for industrial processes and swimming pools



ID

SP

P. 12

Dehumidifiers for industries / swimming pools with temperature control



IT

ST

P. 14

Dehumidifiers with high air renewal



SPR

P. 16

Dehumidifiers with high air renewal and temperature control



STR

P. 18

Air conditioner with heat pump water condensed



HPW

P. 20

Air conditioner for cellars



CCV

P. 22



DDS

WALL MOUNTED DEHUMIDIFIERS



DDS series dehumidifiers with advanced control are completely autonomous and are conceived for wall-mounted installation in small private swimming pools.

DDS models are thought to be installed directly in the room to be dehumidified and the pleasant design is suitable also for other environments, such as museum, archives, libraries, churches, cellars and basements.

The sober but elegant look eases the installation in public and private venues, generally characterized by a sophisticated outline. DDS dehumidifiers with advanced control are completely autonomous in managing humidity: the control on board reads the ambient humidity and activates the dehumidification process when necessary: finally, the installation of these units is particularly simple.

| Technical sheet of the range | | DDS | | | | | | | | | | |
|------------------------------|---------|-----------------|-------|-------|------------------|-------|-------|------------------|-------|------------------|-------|-------|
| | | 040 | 050 | 060 | 070 | 090 | 100 | 160 | 190 | 210 | 230 | 300 |
| Dehumidifying capacity | L/Day | 46 | 52 | 62 | 68 | 89 | 98 | 165 | 186 | 211 | 226 | 290 |
| Refrigerant | Type | R410A | R410A | R410A | R410A | R410A | R410A | R410A | R410A | R410A | R410A | R410A |
| Air flow | m³/h | 350 | 450 | 500 | 600 | 700 | 800 | 1000 | 1200 | 1500 | 1500 | 2000 |
| Available static pressure | Pa | 40 | 40 | 40 | 40 | 40 | 40 | 40 | 40 | 40 | 40 | 40 |
| Hot water coil capacity | kW | 3,7 | 4,5 | 4,8 | 6,1 | 6,8 | 7,5 | 10,1 | 11,5 | 14,5 | 14,5 | 17 |
| Electrical heaters capacity | kW | 1 | 1 | 1,5 | 2 | 3,2 | 3,2 | 4 | 4 | 7,2 | 7,2 | 7,2 |
| Power supply | V/ph/Hz | 230 / 1+N / 50 | | | | | | | | 400 / 3+N / 50 | | |
| Sound level | dB(A) | 43 | 45 | 46 | 47 | 48 | 49 | 51 | 53 | 54 | 55 | 57 |
| Dimensions L x P x H | mm | 850 x 280 x 780 | | | 1050 x 280 x 780 | | | 1350 x 330 x 850 | | 1550 x 330 x 850 | | |
| Weight | kg | 46 | 46 | 46 | 55 | 55 | 55 | 88 | 88 | 100 | 100 | 102 |

All the values refer to the following conditions: inlet air: 30°C - 80% RH; inlet/outlet water: 80/70°C



Options:

- Hot water coil with 3-ways valve
- Coils with epoxy coating
- Electrical heaters
- Modulating EC fans
- Hot gas defrost
- Silent version
- Kit for display at distance
- RS485 Serial board
- Feet kit for floor installation



DCS

WALL MOUNTED DEHUMIDIFIERS FOR TECHNICAL ROOM



DCS series dehumidifiers with advanced control are completely autonomous and are conceived for wall-mounted installation in small private swimming pools.

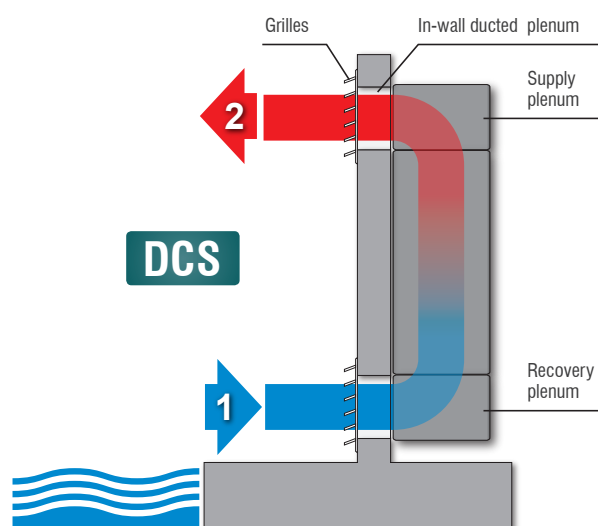
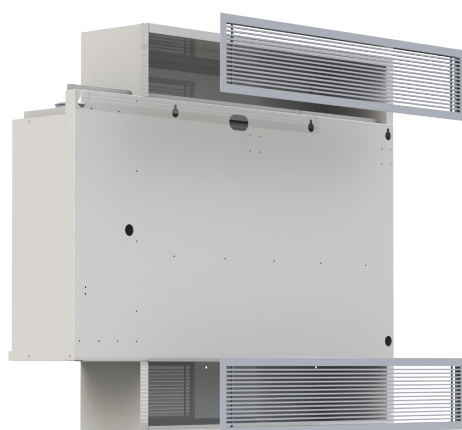
DCS models are thought for the installation in a technical room adjacent to the ambience to dehumidify: in this case, the installation requires supply and recover grilles.

DCS dehumidifiers with advanced control are completely autonomous in managing humidity: the control on board reads the ambient humidity and activates the dehumidification process when necessary: finally, the installation of these units is particularly simple.

Technical sheet of the range

| | | DCS | | | | | | | | | | |
|------------------------------------|---------|-----------------|-------|-------|------------------|-------|-------|------------------|-------|------------------|-------|-------|
| | | 040 | 050 | 060 | 070 | 090 | 100 | 160 | 190 | 210 | 230 | 300 |
| Dehumidifying capacity | L/Day | 46 | 52 | 62 | 68 | 89 | 98 | 165 | 186 | 211 | 226 | 290 |
| Refrigerant | Type | R410A | R410A | R410A | R410A | R410A | R410A | R410A | R410A | R410A | R410A | R410A |
| Air flow | m³/h | 350 | 450 | 500 | 600 | 700 | 800 | 1000 | 1200 | 1500 | 1500 | 2000 |
| Available static pressure | Pa | 40 | 40 | 40 | 40 | 40 | 40 | 40 | 40 | 40 | 40 | 40 |
| Hot water coil capacity | kW | 3,7 | 4,5 | 4,8 | 6,1 | 6,8 | 7,5 | 10,1 | 11,5 | 14,5 | 14,5 | 17 |
| Electrical heaters capacity | kW | 1 | 1 | 1,5 | 2 | 3,2 | 3,2 | 4 | 4 | 7,2 | 7,2 | 7,2 |
| Power supply | V/ph/Hz | 230 / 1+N / 50 | | | | | | | | 400 / 3+N / 50 | | |
| Sound level | dB(A) | 43 | 45 | 46 | 47 | 48 | 49 | 51 | 53 | 54 | 55 | 57 |
| Dimensions L x P x H | mm | 803 x 257 x 764 | | | 1003 x 256 x 745 | | | 1302 x 306 x 834 | | 1503 x 306 x 834 | | |
| Weight | kg | 46 | 46 | 46 | 55 | 55 | 55 | 88 | 88 | 100 | 100 | 102 |

All the values refer to the following conditions: inlet air: 30°C - 80% RH; inlet/outlet water: 80/70°C


Options:

- Hot water coil with 3-ways valve
- Coils with epoxy coating
- Electrical heaters
- Modulating EC fans
- Hot gas defrost
- Silent version
- Kit for display at distance
- RS485 Serial board
- In wall ducted plenum (2 pcs)
- Supply and recovery air plenum (2 pcs)
- Supply and recovery air grilles (2 pcs)



DVS

VERTICAL FLOOR-STANDING DEHUMIDIFIERS



The new dehumidifiers of the range **DVS** with advanced control are completely autonomous and are conceived for a vertical installation in private swimming pools.

The attractive design is perfectly suitable also to other locations, such as museums, archives and cellars.

DVS models are thought for an installation directly in the room that needs to be dehumidified and the sober, but elegant, look eases the installation in public and private venues, generally characterized by a sophisticated design.

This series consists of 7 models, from 68 up to 230 L/day.

The DVS dehumidifiers are completely autonomous in managing humidity: the control on board reads the ambient humidity and activates the dehumidification process when necessary: finally, the installation of these units is particularly simple.

| Technical sheet of the range | | DVS | | | | | | |
|------------------------------|---------|------------------|-------|-------|------------------|-------|----------------|-------|
| | | 070 | 090 | 100 | 160 | 190 | 210 | 230 |
| Dehumidifying capacity | L/Day | 67 | 92 | 99 | 161 | 182 | 213 | 225 |
| Refrigerant | Type | R410A | R410A | R410A | R410A | R410A | R410A | R410A |
| Air flow | m³/h | 600 | 700 | 800 | 1000 | 1200 | 1400 | 1400 |
| Available static pressure | Pa | 200 | 175 | 150 | 100 | 90 | 40 | 40 |
| Hot water coil capacity | kW | 6,1 | 6,8 | 7,5 | 10,4 | 11,9 | 13,3 | 13,3 |
| Electrical heaters capacity | kW | 2 | 3 | 3 | 4 | 4 | 4 | 4 |
| Power supply | V/ph/Hz | 230 / 1+N / 50 | | | | | 400 / 3+N / 50 | |
| Sound level | dB(A) | 46 | 47 | 48 | 50 | 52 | 53 | 54 |
| Dimensions L x P x H | mm | 550 x 330 x 1700 | | | 750 x 330 x 1700 | | | |
| Weight | kg | 80 | 80 | 80 | 140 | 140 | 160 | 160 |

All the values refer to the following conditions: inlet air: 30°C - 80% RH; inlet/outlet water: 80/70°C

Options:

- Hot water coil with 3-ways valve
- Coils with epoxy coating
- Electrical heaters
- Hot gas defrost
- Silent version
- Cable for display connection
- RS485 Serial board
- Display mounted on board
- Kit rectangular flange, top supply
- Kit rectangular flange, back supply

Display mounted on board



DOS

HORIZONTAL DEHUMIDIFIERS FOR DUCTED INSTALLATION



The new **DOS** series dehumidifiers with advanced control are completely autonomous, and are designed for use in private swimming pools where a ducted machine for under ceiling installation is required.

DOS dehumidifiers are perfect for all wet environments such as museums, libraries, archives, cellars.

Designed for suspended ceiling installation, they can also be supplied with all the air distribution accessories such as plenums, grilles, ducts. The series consists of 7 models, from 67 up to 225 L/day.

The dehumidifiers of the DOS series are completely autonomous in the management of humidity and ambient temperature: the probes are supplied on board as standard and the control manages the compressor and the heating coil, if supplied.

The installation of these units is therefore particularly simple.

| Technical sheet of the range | | DOS | | | | | | |
|------------------------------|---------|------------------|-------|-------|-------------------|-------|----------------|-------|
| | | 070 | 090 | 100 | 160 | 190 | 210 | 230 |
| Dehumidifying capacity | L/Day | 67 | 92 | 99 | 161 | 182 | 213 | 225 |
| Refrigerant | Type | R410A | R410A | R410A | R410A | R410A | R410A | R410A |
| Air flow | m³/h | 600 | 700 | 800 | 1000 | 1200 | 1500 | 1500 |
| Available static pressure | Pa | 200 | 175 | 150 | 230 | 200 | 150 | 150 |
| Hot water coil capacity | kW | 6,1 | 6,8 | 7,5 | 10,4 | 11,9 | 13,3 | 13,3 |
| Electrical heaters capacity | kW | 2 | 3 | 3 | 4 | 4 | 4 | 4 |
| Power supply | V/ph/Hz | 230 / 1+N / 50 | | | | | 400 / 3+N / 50 | |
| Sound level | dB(A) | 46 | 47 | 48 | 50 | 52 | 53 | 54 |
| Dimensions L x P x H | mm | 1105 x 800 x 410 | | | 1105 x 1050 x 510 | | | |
| Weight | kg | 84 | 84 | 84 | 147 | 147 | 168 | 168 |

All the values refer to the following conditions: inlet air: 30°C - 80% RH; inlet/outlet water: 80/70°C

Options:

- High efficiency air filter, Class G4
- Hot water coil with 3-ways valve
- Coils with epoxy coating
- Electrical heaters
- Hot gas defrost
- Silent version
- Cable for display connection
- RS485 Serial board
- Kit supply flange for circular ducts
- Kit extraction flange for circular ducts

Display mounted on board



ID

SP

DEHUMIDIFIERS FOR SWIMMING POOLS AND INDUSTRY



The **ID** and **SP** range dehumidifiers are designed for use in high latent load environments requiring 24hrs/day operation. They are typically installed in environments such as public and private swimming pools, dairies, basements, ironing shops, curing cellars, warehouses and wherever a lack of humidity control can damage the structure or the product.

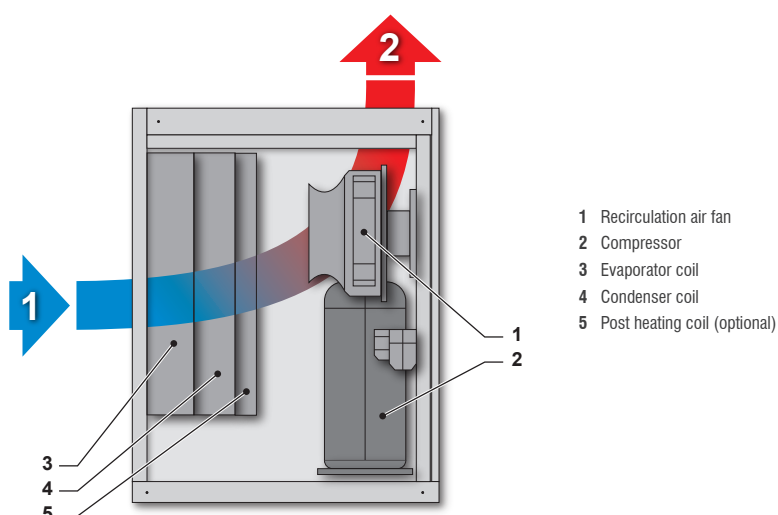
Technical sheet of the range

| | | ID SP | | | | | | | | | |
|-------------------------|---------|-----------------|------|------|------|------|-----------------|------|------|------------------|------|
| | | 0100 | 0130 | 0160 | 0190 | 0210 | 0260 | 0300 | 0350 | 0450 | 0580 |
| Dehumidifying capacity | L/Day | 100 | 128 | 157 | 190 | 210 | 268 | 302 | 358 | 452 | 581 |
| Air flow rate | m³/h | 900 | 1200 | 1600 | 1600 | 2000 | 2800 | 2800 | 3800 | 4000 | 4800 |
| Hot water coil capacity | kW | 5,5 | 9,8 | 9,8 | 9,8 | 16,5 | 17 | 17 | 26,5 | 26,5 | 27 |
| Electric power supply | V/ph/Hz | 230 / 1+N / 50 | | | | | 400 / 3+N / 50 | | | | |
| Dimensions L x P x H | mm | 550 x 700 x 900 | | | | | 850 x 700 x 900 | | | 850 x 830 x 1350 | |
| Weight | kg | 100 | 100 | 105 | 110 | 120 | 130 | 140 | 220 | 230 | 240 |

Technical sheet of the range

| | | ID SP | | | | | | | | | |
|-------------------------|---------|--------------------|------|--------------------|-------|--------------------|-------|-------|-------|--------------------|--------------------|
| | | 0750 | 0950 | 1100 | 1400 | 1500 | 1700 | 1900 | 2200 | 3000 | 4500 |
| Dehumidifying capacity | L/Day | 760 | 955 | 1120 | 1380 | 1480 | 1710 | 1870 | 2180 | 2960 | 4650 |
| Air flow rate | m³/h | 7000 | 8200 | 11000 | 12500 | 13000 | 15000 | 15000 | 17000 | 25000 | 35000 |
| Hot water coil capacity | kW | 48 | 55 | 76 | 83 | 98 | 107 | 107 | 118 | 168 | 235 |
| Electric power supply | V/ph/Hz | 400 / 3+N / 50 | | | | | | | | | |
| Dimensions L x P x H | mm | 1400 x 1000 x 1350 | | 1950 x 1000 x 1640 | | 2500 x 1000 x 1640 | | | | 3390 x 1000 x 1640 | 4430 x 1000 x 1640 |
| Weight | kg | 410 | 430 | 650 | 720 | 780 | 840 | 900 | 950 | 1250 | 1550 |

All the values refer to the following conditions: inlet air: 30°C - 80% RH; inlet/outlet water: 80/70°C


Options:

| | STANDARD CONTROL (*) | ADVANCED CONTROL |
|---|----------------------|------------------|
| Filter holder frame for suction ducting | X | X |
| Mechanical hygrostat | X | -- |
| Electronic chrono – hygrostat | X | -- |
| Hot water coil with 3ways valve | X | X |
| Chilled water coil with 3ways valve | X | X |
| Silent version -2 dB(A) | X | X |
| Soft-start | X | X |
| Manometers | X | X |
| Hot gas defrost | X | X |
| De-superheater for swimming pool water | X | X |
| Centrifugal fan with high prevalence | X | X |
| Electronic radial fans | (**) | X |
| Contact for 0-10 V humidifier control | -- | X |
| ACF - Automatic Control Flow | -- | X |
| Clock card – time scheduling | -- | INCLUDED |
| Dirty filters sensor | -- | X |
| Remote user terminal including 20 m cable | -- | X |
| TH probe for duct installation | -- | X |
| Serial board Modbus, Lonworks, Bacnet, Konnex | -- | X |
| Ethernet™ interface card™ (***) | -- | X |
| Version for outdoor installation | X | X |
| Panels thermal insulation, thickness 20 mm | X | X |
| Panels thermal insulation, thickness 40 mm | X | X |
| Pivoting wheels | X | X |
| Mirror version (access on the left) | -- | -- |

X Available.

-- Not available.

(*) Available for models up to 0950.

(**) Adjustment with potentiometer.

(***) Protocols available: SNMP v1 & v2c, BACnet / IP, BACnet Ethernet e Modbus TCP / IP.



IT

ST

DEHUMIDIFIERS FOR INDUSTRIES / SWIMMING POOLS WITH TEMPERATURE CONTROL



The dehumidifiers of the series **IT** and **ST** are conceived for the use in high latent load environments requiring 24hrs/day operation. Thanks to the temperature control function, with an external condenser, these units grant a full control, not only of the humidity, but also of the ambient temperature.

Therefore, these units are suitable for those applications in which the contemporary control of both parameters is required, such as swimming pools, food storage, salami and cheese seasoning processes and wherever the non-control of temperature and humidity can damage the goods.

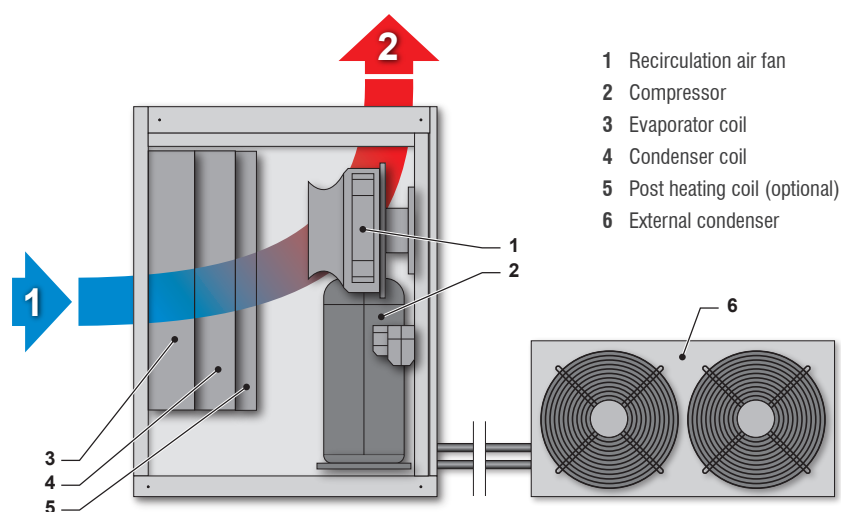
Technical sheet of the range

| | | IT ST | | | | | | | | | |
|-------------------------|---------|-----------------|------|------|------|------|-----------------|------|------------------|------|------|
| | | 0100 | 0130 | 0160 | 0190 | 0210 | 0260 | 0300 | 0350 | 0450 | 0580 |
| Dehumidifying capacity | L/Day | 100 | 128 | 157 | 190 | 210 | 268 | 302 | 358 | 452 | 581 |
| Air flow rate | m³/h | 900 | 1200 | 1600 | 1600 | 2000 | 2800 | 2800 | 3800 | 4000 | 4800 |
| Cooling power | kW | 4,9 | 6,5 | 8 | 10 | 11 | 15 | 16 | 19 | 23 | 30 |
| Hot water coil capacity | kW | 5,5 | 9,8 | 9,8 | 9,8 | 16,5 | 17 | 17 | 26,5 | 26,5 | 27 |
| Electric power supply | V/ph/Hz | 230 / 1+N / 50 | | | | | 400 / 3+N / 50 | | | | |
| Dimensions L x P x H | mm | 550 x 700 x 900 | | | | | 850 x 700 x 900 | | 850 x 830 x 1350 | | |
| Weight | kg | 100 | 100 | 105 | 110 | 120 | 130 | 140 | 220 | 230 | 240 |

Technical sheet of the range

| | | IT ST | | | | | | | | | |
|-------------------------|---------|--------------------|------|--------------------|-------|--------------------|-------|-------|--------------------|-------|--------------------|
| | | 0750 | 0950 | 1100 | 1400 | 1500 | 1700 | 1900 | 2200 | 3000 | 4500 |
| Dehumidifying capacity | L/Day | 760 | 955 | 1120 | 1380 | 1480 | 1710 | 1870 | 2180 | 2960 | 4650 |
| Air flow rate | m³/h | 7000 | 8200 | 11000 | 12500 | 13000 | 15000 | 15000 | 17000 | 25000 | 35000 |
| Cooling power | kW | 38 | 50 | 56 | 66 | 75 | 86 | 96 | 110 | 148 | 277 |
| Hot water coil capacity | kW | 48 | 55 | 76 | 83 | 98 | 107 | 107 | 118 | 168 | 235 |
| Electric power supply | V/ph/Hz | 400 / 3+N / 50 | | | | | | | | | |
| Dimensions L x P x H | mm | 1400 x 1000 x 1350 | | 1950 x 1000 x 1640 | | 2500 x 1000 x 1640 | | | 3390 x 1000 x 1640 | | 4430 x 1000 x 1640 |
| Weight | kg | 410 | 430 | 650 | 720 | 780 | 840 | 900 | 950 | 1250 | 1550 |

All the values refer to the following conditions: inlet air: 30°C - 80% RH; inlet/outlet water: 80/70°C; outdoor air: 30°C - 50% RH.


Options:

| | STANDARD CONTROL (*) | ADVANCED CONTROL |
|---|----------------------|------------------|
| Filter holder frame for suction ducting | X | X |
| Mechanical hygrostat | X | -- |
| Electronic chrono – hygrostat | X | -- |
| Hot water coil with 3ways valve | X | X |
| Chilled water coil with 3ways valve | X | X |
| Silent version -2 dB(A) | X | X |
| Soft-start | X | X |
| Manometers | X | X |
| Hot gas defrost | X | X |
| De-superheater for swimming pool water | X | X |
| Centrifugal fan with high prevalence | X | X |
| Electronic radial fans | (**) | X |
| Contact for 0-10 V humidifier control | -- | X |
| ACF - Automatic Control Flow | -- | X |
| Clock card – time scheduling | -- | INCLUDED |
| Dirty filters sensor | -- | X |
| Remote user terminal including 20 m cable | -- | X |
| TH probe for duct installation | -- | X |
| Serial board Modbus, Lonworks, Bacnet, Konnex | -- | X |
| Ethernet™ interface card™ (***) | -- | X |
| Version for outdoor installation | X | X |
| Panels thermal insulation, thickness 20 mm | X | X |
| Panels thermal insulation, thickness 40 mm | X | X |
| Pivoting wheels | X | X |
| Mirror version (access on the left) | -- | -- |

X Available.

-- Not available.

(*) Available for models up to 0950.

(**) Adjustment with potentiometer.

(***) Protocols available: SNMP v1 & v2c, BACnet / IP, BACnet Ethernet e Modbus TCP / IP.



SPR

SWIMMING POOL DEHUMIDIFIERS WITH ENHANCED AIR RENEWAL AND HIGH-EFFICIENCY HEAT RECOVERY SYSTEM



The **SPR** units are ideal for swimming pools that not only require dehumidification but must also renew the indoor air without dispersing heat outdoors. Up to 80% yield is guaranteed by the high-efficiency recovery system. The SPR units represent the state-of-the-art in terms of efficiency, reliability and emitted sound power. The SPR range only uses electronic radial fans with high-energy efficiency incorporated inverter. HiDew developed a sophisticated adjustment software to adjust the SPR dehumidifiers air flow rate. This software sets, measures and controls the air flow rate, eliminating any chance of incorrectly calculating the ducts' pressure drops, thereby making dehumidifier installation and system commissioning extremely easy and quick as well as by reducing installation times and costs.

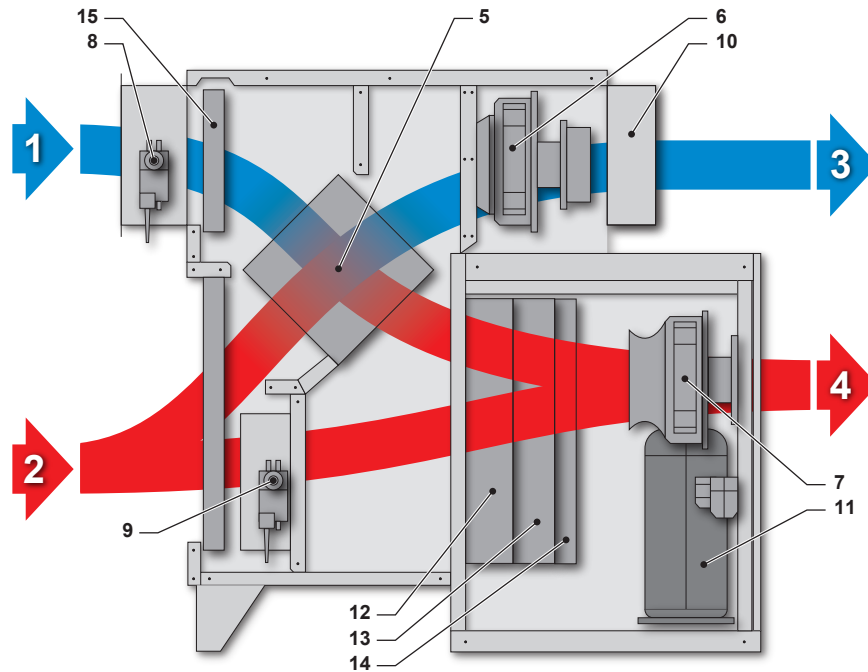
Technical sheet of the range

| | | SPR | | | | | | | | | |
|-------------------------------------|---------|-------------------|----------|----------|----------|----------|-------------------|----------|----------|-------------------|----------|
| | | 0100 | 0130 | 0160 | 0190 | 0210 | 0260 | 0300 | 0350 | 0450 | 0580 |
| Dehumidifying capacity (1) | L/Day | 100 | 128 | 157 | 190 | 210 | 268 | 302 | 358 | 452 | 581 |
| Recirculation air flow rate | m³/h | 900 | 1200 | 1600 | 1600 | 2000 | 2800 | 2800 | 3800 | 4000 | 4800 |
| Fresh air flow rate | kW | 0 - 900 | 0 - 1200 | 0 - 1200 | 0 - 1200 | 0 - 2000 | 0 - 2000 | 0 - 2000 | 0 - 2000 | 0 - 2000 | 0 - 2000 |
| Hot water coil capacity (1) | kW | 5,5 | 9,8 | 9,8 | 9,8 | 16,5 | 17 | 17 | 26,5 | 26,5 | 27 |
| Heat recovery system efficiency (2) | kW | 70 | 70 | 70 | 70 | 70 | 70 | 70 | 70 | 70 | 70 |
| Electric power supply | V/ph/Hz | 230 / 1+N / 50 | | | | | 400 / 3+N / 50 | | | | |
| Dimensions L x P x H | mm | 550 x 1452 x 1320 | | | | | 850 x 1452 x 1320 | | | 850 x 1682 x 1769 | |
| Weight | kg | 155 | 155 | 160 | 165 | 200 | 210 | 220 | 250 | 270 | 300 |

Technical sheet of the range

| | | SPR | | | | | | | | | |
|-------------------------------------|---------|--------------------|----------|--------------------|-----------|--------------------|-----------|-----------|-----------|--------------------|--------------------|
| | | 0750 | 0950 | 1100 | 1400 | 1500 | 1700 | 1900 | 2200 | 3000 | 4500 |
| Dehumidifying capacity (1) | L/Day | 760 | 955 | 1120 | 1380 | 1480 | 1710 | 1870 | 2180 | 2960 | 4650 |
| Recirculation air flow rate | m³/h | 7000 | 8200 | 11000 | 12500 | 13000 | 15000 | 15000 | 17000 | 20000 | 35000 |
| Fresh air flow rate | kW | 0 - 6000 | 0 - 6000 | 0 - 11000 | 0 - 12500 | 0 - 13000 | 0 - 15000 | 0 - 15000 | 0 - 17000 | 0 - 20000 | 277 |
| Hot water coil capacity (1) | kW | 48 | 55 | 76 | 83 | 98 | 107 | 107 | 118 | 168 | |
| Heat recovery system efficiency (2) | kW | 70 | 70 | 70 | 70 | 70 | 70 | 70 | 70 | 70 | 235 |
| Electric power supply | V/ph/Hz | 400 / 3+N / 50 | | | | | | | | | |
| Dimensions L x P x H | mm | 1400 x 2331 x 1950 | | 2700 x 1950 x 2340 | | 2500 x 2505 x 2380 | | | | 2500 x 3390 x 2380 | 2500 x 4430 x 2380 |
| Weight | kg | 710 | 730 | 870 | 1060 | 1280 | 1280 | 1290 | 1290 | 1680 | 2100 |

(1) Inlet air: 30°C - 80% RH; inlet/outlet water: 80/70°C; 100% recirculation. (2) Indoor air: 26°C - 60% RH; outdoor air: -5°C - 80% RH.



- | | |
|--|------------------------------------|
| 1 Inlet fresh outdoor air flow | 9 Calibration damper |
| 2 Indoor recirculation air flow | 10 Discharged air gravity damper |
| 3 Expelled outdoors air flow | 11 Compressor |
| 4 Supply air flow indoors | 12 Evaporator coil |
| 5 High-efficiency crossed flows heat recovery system | 13 Condenser coil |
| 6 Exhaust air exhaust fan | 14 Reheat coil (optional) |
| 7 Recirculation air fan | 15 Outdoor fresh air filter |
| 8 Outdoor air damper | 16 Indoor recirculation air filter |

Options:

- | | |
|---|--|
| - High efficiency air filters | - De-superheater for swimming pool water |
| - Hot water coil with 3-ways valve | - ACF - Automatic Control Flow |
| - Chilled water coil with 3-ways valve | - Clock card – time scheduling |
| - Free cooling | - Dirty filters sensor |
| - Silent version -2 dB(A) | - Remote user terminal including 20 m cable |
| - Soft-start | - TH probe for duct installation |
| - Manometers | - Serial board Modbus, Lonworks, Bacnet, Konnex, Ethernet™ |
| - Hot gas defrost | - External version (outside temperature down to -10°C) |
| - Contact for 0-10 V humidifier control | - Panels thermal insulation, thickness 20 mm or 40 mm |



STR

DEHUMIDIFIERS WITH HIGH AIR RENEWAL AND TEMPERATURE CONTROL



The **STR** models are the ideal units for industries and swimming pools that require not only dehumidification, but also a high air renewal, without dispersing the internal heat outdoors, and the temperature control. With an efficiency of the recovery up to 80%, these units represent the state-of-art in terms of efficiency, reliability and emitted sound power.

The STR range only uses electronic radial fans with high-energy efficiency inverter integrated.

Thanks to the temperature control function, with an external condenser, these units grant a full control, not only of the humidity, but also of the ambient temperature.

Therefore, these units are suitable for those applications in which the contemporary control of both the parameters is required.

Moreover, thanks to a sophisticated software, developed in HIDEW, the air flow can be set, measured and controlled: it eliminates any chance of incorrect calculation of load losses.

Finally, the installation and the first start of these units result simple, quick and cheap.

Technical sheet of the range

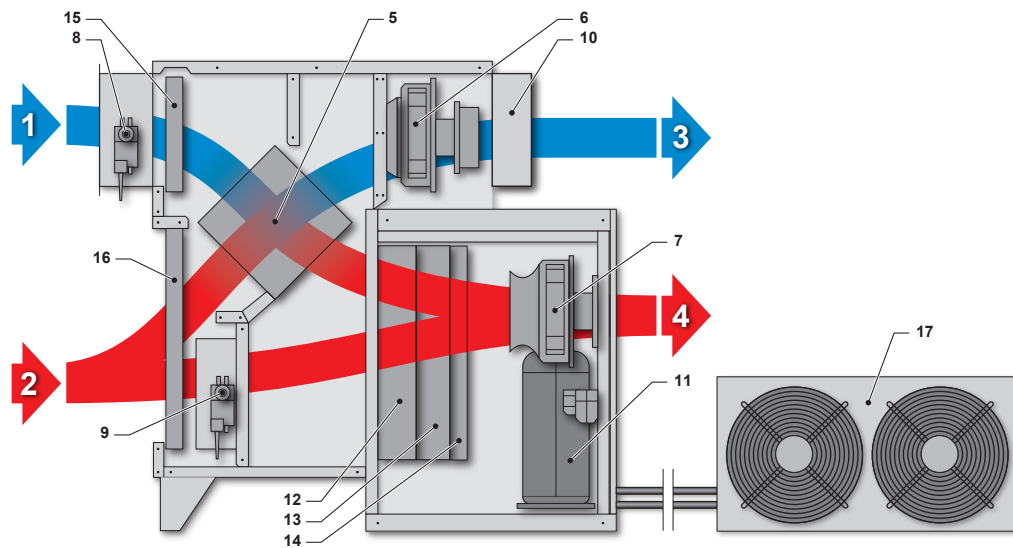
| | | STR | | | | | | | | | |
|-------------------------------------|---------|-------------------|----------|----------|----------|----------|-------------------|----------|----------|-------------------|----------|
| | | 0100 | 0130 | 0160 | 0190 | 0210 | 0260 | 0300 | 0350 | 0450 | 0580 |
| Dehumidifying capacity (1) | L/Day | 100 | 128 | 157 | 190 | 210 | 268 | 302 | 358 | 452 | 581 |
| Recirculation air flow rate | m³/h | 900 | 1200 | 1600 | 1600 | 2000 | 2800 | 2800 | 3800 | 4000 | 4800 |
| Fresh air flow rate | kW | 0 - 900 | 0 - 1200 | 0 - 1200 | 0 - 1200 | 0 - 2000 | 0 - 2000 | 0 - 2000 | 0 - 2000 | 0 - 2000 | 0 - 2000 |
| Hot water coil capacity (1) | kW | 5,5 | 9,8 | 9,8 | 9,8 | 16,5 | 17 | 17 | 26,5 | 26,5 | 27 |
| Heat recovery system efficiency (2) | kW | 70 | 70 | 70 | 70 | 70 | 70 | 70 | 70 | 70 | 70 |
| Electric power supply | V/ph/Hz | 230 / 1+N / 50 | | | | | 400 / 3+N / 50 | | | | |
| Dimensions L x P x H | mm | 550 x 1452 x 1320 | | | | | 850 x 1452 x 1320 | | | 850 x 1682 x 1769 | |
| Weight | kg | 155 | 155 | 160 | 165 | 200 | 210 | 220 | 250 | 270 | 300 |

Technical sheet of the range

| | | STR | | | | | | | | | |
|-------------------------------------|---------|--------------------|----------|--------------------|-----------|--------------------|-----------|-----------|-----------|--------------------|--------------------|
| | | 0750 | 0950 | 1100 | 1400 | 1500 | 1700 | 1900 | 2200 | 3000 | 4500 |
| Dehumidifying capacity (1) | L/Day | 760 | 955 | 1120 | 1380 | 1480 | 1710 | 1870 | 2180 | 2960 | 4650 |
| Recirculation air flow rate | m³/h | 7000 | 8200 | 11000 | 12500 | 13000 | 15000 | 15000 | 17000 | 20000 | 35000 |
| Fresh air flow rate | kW | 0 - 6000 | 0 - 6000 | 0 - 11000 | 0 - 12500 | 0 - 13000 | 0 - 15000 | 0 - 15000 | 0 - 17000 | 0 - 20000 | 277 |
| Hot water coil capacity (1) | kW | 48 | 55 | 76 | 83 | 98 | 107 | 107 | 118 | 168 | |
| Heat recovery system efficiency (2) | kW | 70 | 70 | 70 | 70 | 70 | 70 | 70 | 70 | 70 | 235 |
| Electric power supply | V/ph/Hz | 400 / 3+N / 50 | | | | | | | | | |
| Dimensions L x P x H | mm | 1400 x 2331 x 1950 | | 2700 x 1950 x 2340 | | 2500 x 2505 x 2380 | | | | 2500 x 3390 x 2380 | 2500 x 4430 x 2380 |
| Weight | kg | 710 | 730 | 870 | 1060 | 1280 | 1280 | 1290 | 1290 | 1680 | 2100 |

(1) Inlet air: 30°C - 80% RH; inlet/outlet water: 80/70°C; outdoor air: 30°C - 50% RH; 100% recirculation.

(2) Indoor air: 26°C - 60% RH; outdoor air: -5°C - 80% RH.



- | | | |
|--|----------------------------------|------------------------------------|
| 1 Inlet fresh outdoor air flow | 7 Recirculation air fan | 13 Condenser coil |
| 2 Indoor recirculation air flow | 8 Outdoor air damper | 14 Reheat coil (optional) |
| 3 Expelled outdoors air flow | 9 Calibration damper | 15 Outdoor fresh air filter |
| 4 Supply air flow indoors | 10 Discharged air gravity damper | 16 Indoor recirculation air filter |
| 5 High-efficiency crossed flows heat recovery system | 11 Compressor | 17 External condenser |
| 6 Exhaust air exhaust fan | 12 Evaporator coil | |

Options:

- High efficiency air filters
- Hot water coil with 3-ways valve
- Chilled water coil with 3-ways valve
- Free cooling
- Silent version -2 dB(A)
- Soft-start
- Manometers
- Hot gas defrost
- Contact for 0-10 V humidifier control
- De-superheater for swimming pool water
- ACF - Automatic Control Flow
- Clock card – time scheduling
- Dirty filters sensor
- Remote user terminal including 20 m cable
- TH probe for duct installation
- Serial board Modbus, Lonworks, Bacnet, Konnex, Ethernet™
- External version (outside temperature down to -10°C)
- Panels thermal insulation, thickness 20 mm or 40 mm



HPW

AIR CONDITIONER WITH HEAT PUMP WATER CONDENSED



The range of **HPW** air conditioner with heat pump water condensed, are conceived for ambiances that need a conditioning by heating and/or cooling 24hrs/day. They are typically installed in offices, but the technical characteristics make them perfect also for other ambiances, such as museum, libraries, archives, places of religious worship, warehouses, cellars and other places that require a controlled air conditioning, in order to grant the comfort.

The air conditioners with heat pump water condensed, are completely autonomous and, by standard, they are supplied with temperature probes.

Their simple installation requires a condensate drain, water (also from geothermal source) and power supply.

The top-quality refrigeration, hydraulic, aeraulic and electric components, make HPW units the state of the art air conditioners in terms of efficiency and reliability.

HiDew HPW air conditioners have been designed to make the ordinary and extraordinary maintenance easy and quick.

The HPW range consists of 3 models, with air flows from 400 to 650 m³/h.

Technical sheet of the range

| | | HPW 030 | HPW 040 | HPW 050 | HPW 065 |
|---|---------|-----------------------|------------------|------------------|------------------|
| Summer total cooling power (1) | kW | 2,0 | 2,3 | 2,9 | 3,9 |
| Absorbed power compressor in summer (1) | kW | 0,5 | 0,6 | 0,75 | 1,0 |
| COP summer | | 4 | 3,8 | 3,8 | 3,9 |
| EER summer | | 3,5 | 3,3 | 3,4 | 3,2 |
| Winter heating power (2) | kW | 2,4 | 2,6 | 3,3 | 4,4 |
| Absorbed power compressor in winter (2) | kW | 0,6 | 0,7 | 0,9 | 1,1 |
| COP winter | | 4 | 3,7 | 3,6 | 4,0 |
| EER winter | | 3,6 | 3,3 | 3,3 | 3,4 |
| Sound pressure level | dB | 48 | 48 | 49 | 51 |
| Nominal air flow | m³/h | 350 | 450 | 550 | 650 |
| Electric power supply | V/ph/Hz | 230 / 1+N / 50 | | | |
| Rotary compressor | N° | 1 | 1 | 1 | 1 |
| Steps / Circuits | N° | 1 / 1 | 1 / 1 | 1 / 1 | 1 / 1 |
| Minimum water flow to the plate exchanger | min | 4,8 | 5,1 | 6,6 | 9,0 |
| Water load losses | kPa | 22 | 22 | 30 | 28 |
| Functioning limitations air in summer | °C | Min 20 °C / Max 35 °C | | | |
| Functioning limitations air in winter | °C | Min 15 °C / Max 28 °C | | | |
| Functioning limitations water in summer | °C | Min 15 °C / Max 40 °C | | | |
| Functioning limitations water in winter | °C | Min 10 °C / Max 25 °C | | | |
| Dimensions L x P x H | | 1050 x 280 x 720 | 1050 x 280 x 720 | 1050 x 280 x 720 | 1250 x 280 x 720 |
| Weight | kg | 44 | 45 | 3,0 | 60 |

(1) Inlet air: 27°C - 50% RH; inlet water: 30°C.

(2) Inlet air: 20°C; inlet water: 15°C.

Options:

- RS 485 serial board
- Water filter



CCV

AIR CONDITIONER FOR CELLARS

The air conditioners **CCV** - **CCA** - **CCW** have been especially developed to keep the indoor temperature and humidity in a really close range; the typical applications are wine rooms, laboratories, IT.

The nice and compact design can match all the requirements in terms of space saving, easy installation and aesthetic result.

The unit is monobloc (CCV, CCW); CCA has an additional remote condenser for outdoor installation.

Working models:

- Heating
- Cooling
- Humidification
- Dehumidification



Focus on technology:

- Electrical heating
- Refrigerant cooling circuit
- Sunked electrodes humidifier
- Recirculation fan: electronic radial with brushless motor and inverter, that can be modulated from 0 up to 100%
- Condensation fan: electronic radial with brushless motor and inverter, that can be modulated from 0 up to 100% (CCV and CCA models)
- Modulating water valve (CCW model) + modulation condensing control
- Temperature and humidity probe on board with close tolerance +/- 0,5%
- Advanced and programmable control with available remote display
- Water sanitization system
- Time-bands program
- Access and unit maintenance from the front

Advantages:

- Monobloc extremely compact unit
- Nice design
- Connection with the aeraulic system compatible with the new HiDew air distribution devices
- Short installation time
- No needs for refrigerant technician neither for refrigerant gas empty or fill in operations (CCV and CCW models)
- The risk of installation faults is extremely reduced, that is the long term reliability and low energy cost will be assured
- Circular connections nr° 6 x 160 mm (CCV model)
- Circular connections nr° 2 x 160 mm (CCA and CCW models)

The range of air conditioners for cellars has been extended adding to the existing monobloc air-cooled unit “CCV”, the “CCA” split air-to-air version with remote air condenser for outdoor installation and the “CCW” water-to-air monobloc version.

Summarizing the 3 versions are:

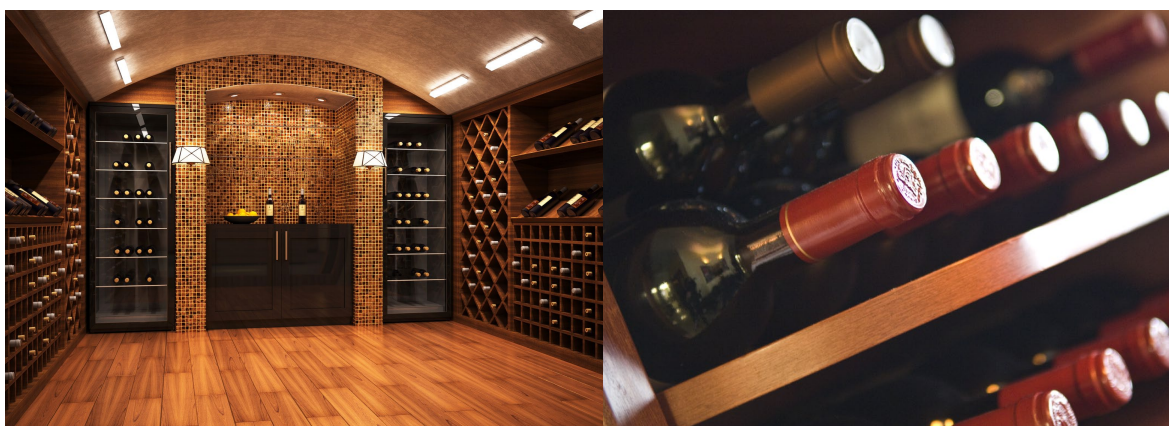
- **CCV 0450** = Air-to-air, monobloc, 4 connections for fresh air duct, d. 160 mm.
- **CCA 0450** = Air-to-air, split, outdoor condenser with refrigerant connections.
- **CCW 0450** = Water-to-air, monobloc.

| Technical sheet of the range | | CCV 0450 | CCA 0450 | CCW 0450 |
|--|---------|--------------------------|----------|----------|
| Cooling power | Watt | 2150 | 2200 | 2250 |
| Air flow | m³/h | Variable from 350 to 450 | | |
| Available static pressure | Pa | 180 | 180 | 180 |
| Available static pressure (condenser side) | Pa | 150 | 220 | - |
| Electric heater | Watt | 1500 | 1500 | 1500 |
| Maximum power consumption (without options) | Watt | 1400 | 1400 | 1230 |
| Power consumption, including electric heater | Watt | 3000 | 3000 | 2830 |
| Dimensions L x P x H | mm | 650 x 450 x 1645 | | |
| Refrigerant | Type | R 410 A | R 410 A | R 410 A |
| Electric power supply | V/ph/Hz | 230 / 1+N / 50 | | |
| Inside operating limits | °C | from +15 to +30 | | |
| Suggested inside temperature conditions | °C | from +18 to +20 | | |
| Outside operating limits - Temperature | °C | from -5 to +35 | | |
| Outside operating limits - Humidity | %RH | < 95 to 40 °C | | |

All the values refer to the following conditions: indoor air: 18°C - 80% RH; outdoor air: 30°C - 50% RH (CCV, CCA); inlet water: 25°C (CCW)

Options:

- Steam humidifier
- Electrical heater
- RS485 Serial board
- Silent version
- F6 high efficiency filter, inside air
- Air suction from the rear
- Kit air connection for fresh air duct (only CCV)
(composed by air duct 10 m, Ø 160 mm and n° 4 wall flanges)





HiDew S.r.l.

Headquarter : Via dell'Artigianato, 5 35026 Conselve (PD) - Italia

Telefono : +39 049 9502511

Registered Office : Viale Spagna, 31/33 35020 Tribano (PD) - Italy

Phone: +39 049 9588511 Fax: +39 049 9588522

www.hidew.it info@hidew.it