

# Compact Telehandlers

Turbofarmer 33.7



**PERFORMANCE AND FEATURES****TF33.7-115****TF33.7-G****TF33.7-115L****Performance**

Unladen weight (kg)	6700	6400	6700
Maximum load capacity (kg)	3300	3300	3300
Lift height (m)	6,6	6,6	6,6
Maximum reach (m)	3,5	3,5	3,5
Lift height at max. load capacity (m)	5,5	5,5	5,5
Reach at max. load capacity (m)	1,4	1,4	1,4
Load capacity at max. lift height (m)	2600	2600	2600
Load capacity at max. reach (kg)	1350	1350	1350
Boom side-shift (mm)	-	-	-
Frame levelling (%)	-	-	-
Boom section	2	2	2

**Powertrain**

Engine	Deutz TCD 3.6	Kohler KDI 2504 TCR	Deutz TCD 3.6
Range/Cylinders	3600/4	2500/4	3600/4
Engine power (kW/HP)	85/115	55,4/75,1	85/115
Anti-pollution technology	Stage V - SCR + DPF + DOC	Stage V - DOC + DPF	Stage V - SCR + DPF + DOC
Reversible Fan	●	●	●
Maximum speed (km/h)	40	40	40
Fuel tank capacity (l)	85	80	85
AdBlue tank capacity (l)	12		12
Hydrostatic transmission	YES - 2V	YES - 2V	YES - 2V
EPD	PLUS	STD	PLUS
Joystick autoaccelerante	STD	NO	STD
Axles	Axial	Axial	Axial
Reducers	Epicyclic	Epicyclic	Epicyclic
Brakes	Dry discs	Dry discs	Dry discs

**Hydraulic**

Hydraulic pump	LS+FS	Gear	LS+FS
Delivery / pressure (L / MIN - BAR)	125 - 210	98 - 210	125 - 210
Hydraulic oil tank capacity (l)	85	85	85
Auxiliary hydraulic service on boom	●	●	●
Rear service line	○	○	○

**Cab**

Cab finishing	ECO	ECO	ECO
ASCS	Light	NO	Light
FOPS II Cab	●	●	●
ROPS Cab	●	●	●
Controls	Electronic joystick control	Electrohydraulic joystick control	Electronic joystick control
Tilting cab	—	—	—
Reverse shuttle	Dual reverse	Dual reverse	Dual reverse

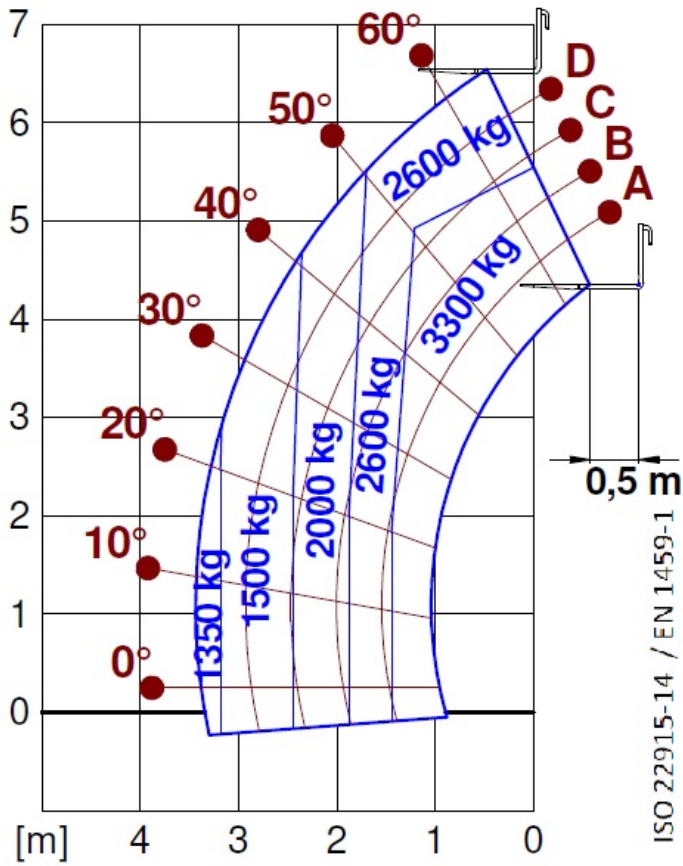
**Configuration**

Hydropneumatic Suspension CS Merlo	—	—	—
Hydropneumatic Suspension BSS Merlo	○	○	○
Hydropneumatic Suspension EAS Merlo	—	—	—
Work lights on cab	●	○	●
Sun-shade in the cab	○	○	○
Tac-lock	●	●	●
Pre-arrangement for aerial work platform	○	—	○
Two floating forks	●	●	●
Pedal Inching-Control	●	●	●
Permanent four-wheel drive	●	●	●
All wheel steering	●	●	●
Three steering way	●	●	●
Standard tyres			
OPT tyres			
Hydraulically controlled stabilizers	—	—	—
Turret rotation	—	—	—
Tractor type approval	○	○	○
Pneumatic brakes (ton)	—	—	—
Hydraulic brakes (ton)	○	○	○

PTO  
3-point rear linkage



— not available  
● standard  
○ optional



Dimensions



	TF33.7-115	TF33.7-G	TF33.7-115L
A - Length	4310	970	970
C - Wheelbase	2740	3910	3910
F - Ground clearance	290	290	290
H - Width	2100	2100	2100
M - Cabin width	1010	1010	1010
P - Height	2120 (2020 L)	2120	2020
R - Turning radius at wheels	3930	3930	3930
S - Turning radius at forks	4660	4660	4660

**Your Merlo dealer**

**MERLO S.P.A.**

Via Nazionale, 9

12010 S. Defendente di Cervasca, (Cuneo) Italia

Tel. +39 0171 614111

Fax +39 0171 684101

[info@merlo.com](mailto:info@merlo.com)

[www.merlo.com](http://www.merlo.com)



