



the uSmart[®]
3300 Gen3

the new wave in portable ultrasound

A fusion of *SuperHarmonic™* Imaging Power and Smart Design



uSmart® 3300 Gen3

The uSmart® 3300 Gen3 introduces the new look of ultrasound, a fusion of Smart Technology, Smart Resolution Imaging, and an advanced *SuperHarmonic™* imaging engine that delivers an innovative and intuitive system with elite performance.

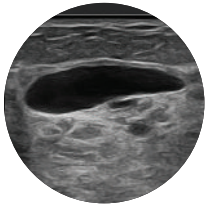
A member of our comprehensive ultrasound family, the uSmart® 3300 Gen3 affords quick and easy start-up, ideal for Anesthesia, Breast, Cardiology, Critical Care, Emergency Medicine, Lung Scanning, Musculoskeletal, OB/GYN, Vascular, and more. With advanced computer technology and our proprietary design, the uSmart® 3300 Gen3 is a powerful diagnostic ultrasound system.



the new wave in
ultrasound technology:

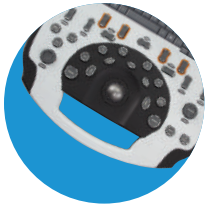
- affordable
- dependable
- portable





SuperHarmonic™ imaging

The new SuperHarmonic™ imaging capability with enriched detail, clarity, contrast resolution, and border definition is a more powerful imaging experience.



smart console design

A familiar layout just got better! Reliable and responsive high-quality buttons and a durable, impact-resistant design for added protection are coupled with ergonomic soft key positioning and toggle buttons that reduce keystrokes, providing better productivity and efficiency.



uConnect® remote capabilities

Exclusively from Terason, this feature allows for the ability to connect wirelessly for upgrades, support, service, and collaboration.

the best tools for your practice

- 1 TB NVMe M.2 SSD
- SuperHarmonic™ Smart Resolution Imaging
- Ergonomic Soft Keys
- Durable and Impact-Resistant
- CW Doppler
- Smart Console
- Intuitive Interface
- Enhanced Needle Visualization (ENV)
- DICOM Structured Reporting
- Auto-EF
- uSmartScan™ Exam Protocol Software, Programmable Exam Protocol Software
- Multi-Probe Connector Kit
- Security/Encryption
- TeraVision™ II
- Open Architecture
- Smart Guide™
- Large Optical Trackball
- Dynamic Depth Resolution (DDR™)
- Intima-Media Thickness (IMT)
- Strain
- Stress Echo

the Terason commitment

We share your commitment to delivering quality care to your patients. With a robust online support infrastructure for system maintenance, training, and upgrades, you can count on Terason to partner with you and keep your investment at the forefront of medical technology for years to come.

Terason's uSmart® transducers

Our family of lightweight and ergonomic transducers is ideal for easy scanning

15L4 Linear Array



15L4A Linear Array



15WL4 Linear Array



16L5 Linear Array



16SL5 Linear Array



16HL7 High Frequency Linear Array



8L2 Smart Mark™ Linear Array



4V2A Phased Array



8V3A Phased Array



5C2A Curved Array



8EC4 Endocavity



10EC4 Endocavity



8BP4 Bi-plane Endocavity



10 BP4 Bi-plane Endocavity



8TE TEE Transesophageal



XY Multi-Frequency Bi-plane



Pedoff



uSmart® 3300 Gen3 Ultrasound System Specifications

Imaging Modes

- 2D (B-Mode)
- M-Mode
- Anatomical M-Mode
- Color Doppler
- Pulsed Wave Doppler
- Power Doppler
- Directional Power Doppler
- Continuous Wave Doppler
- Tissue Doppler
- Tissue Harmonic Imaging with *SuperHarmonics*

System Features

- 1 TB NVMe M.2 SSD
- 802.11 b/g/n Wireless Network, BT 4.0
- Intel® Core™ i7-1185G7E processor, 12M Cache, up to 4.40 GHz
- 16G RAM DDR3 Onboard Memory
- 15" Backlit Polarized Anti-Glare LCD, Ultra-Wide Viewing Angle
- Removable Lithium Ion Battery
- Imaging Channels: 256
- Dynamic Range: 200 dB
- Video Output: 1024 x 768
- Built-In Camera
- Dual Speakers with Subwoofer
- 4 USB Ports (2 USB 3.1 IO Ports)
- Gb Ethernet Port
- 1 HDMI Port
- DC Input
- Headphone Jack
- Microphone Jack
- Kensington Security Slot
- ECG with Lead Off Detection and Auxiliary Ports
- uConnect® Remote Capabilities
- Windows® 11 Operating System

- Cold Boot-Up Time: < 55 Seconds

Imaging Features

- Smart Resolution Imaging
- Enhanced Needle Visualization (ENV)
- TeraVision™ II
- OmniBeam™
- Dynamic Depth Resolution (DDR™)
- TeraZoom™
- Trapezoid
- Color/2D
- Triplex/Duplex (Simultaneous/Non-Simultaneous)
- Split Screen
- Full Screen
- Auto Optimization
- 2D Beam Steering
- Application-Specific Presets
- TeraScape™
- Post Processing
- Intima-Media Thickness (IMT)

Ergonomics

- Smart Console Design
- Optical Trackball (Full-Size)
- Ergonomic Key Positioning
- Reliable and Responsive High-Quality Controls
- Backlit High-Resolution LCD
- Backlit Keyboard
- Comfort Handle



- Intuitive User Interface
- Tilt Feet

Workflow

- Color Change Controls for Active Mode
- Prospective and Retrospective Capture
- Cine Loop Trim Capability
- Advanced Measurement Tools
- Configurable Report Builder
- Store, Print, Media Export
- JPEG/AVI/BMP/PDF Media Export
- DICOM 3.0
- DICOM Modality Worklist
- DICOM Storage
- DICOM SR
- uSmartScan™ Exam Protocol Software, Programmable Exam Protocol Software

Measurement Packages

- Cardiology
- OB
- Vascular

Physical System Specifications

- System Height: 3.5" / 89 mm
- System Depth: 15.6" / 396 mm
- System Width: 15.3" / 389 mm
- Weight: 14.8 lb / 6.7 kg

Cart Design and Ergonomics

- Sleek Body Style
- Weight: 85 lb / 38.5 kg
- Mobile Design
- 4-Wheel Steering for Excellent Mobility
- 4 Locking Wheels
- 3 Transducer Holders
- Removable and Washable Gel Holder
- On-Cart Storage Basket
- Transducer Connector Holders
- Cable Management
- OEM Printer Bay
- Multi-Probe Connector Kit (Optional)



Terason Division • Teratech Corporation
77 Terrace Hall Avenue, Burlington, MA 01803 • 1-866-TERASON • 781-270-4143 • terason.com

CE 0413

©2023 Teratech Corporation. All rights reserved.

Terason, uSmart and uConnect are registered trademarks of Teratech Corporation. Smart Gestures, uSmartScan, and SuperHarmonic are trademarks of Teratech Corporation. All other trademarks or registered trademarks are the property of their respective owners. 16-3417 REV O MAY 2023